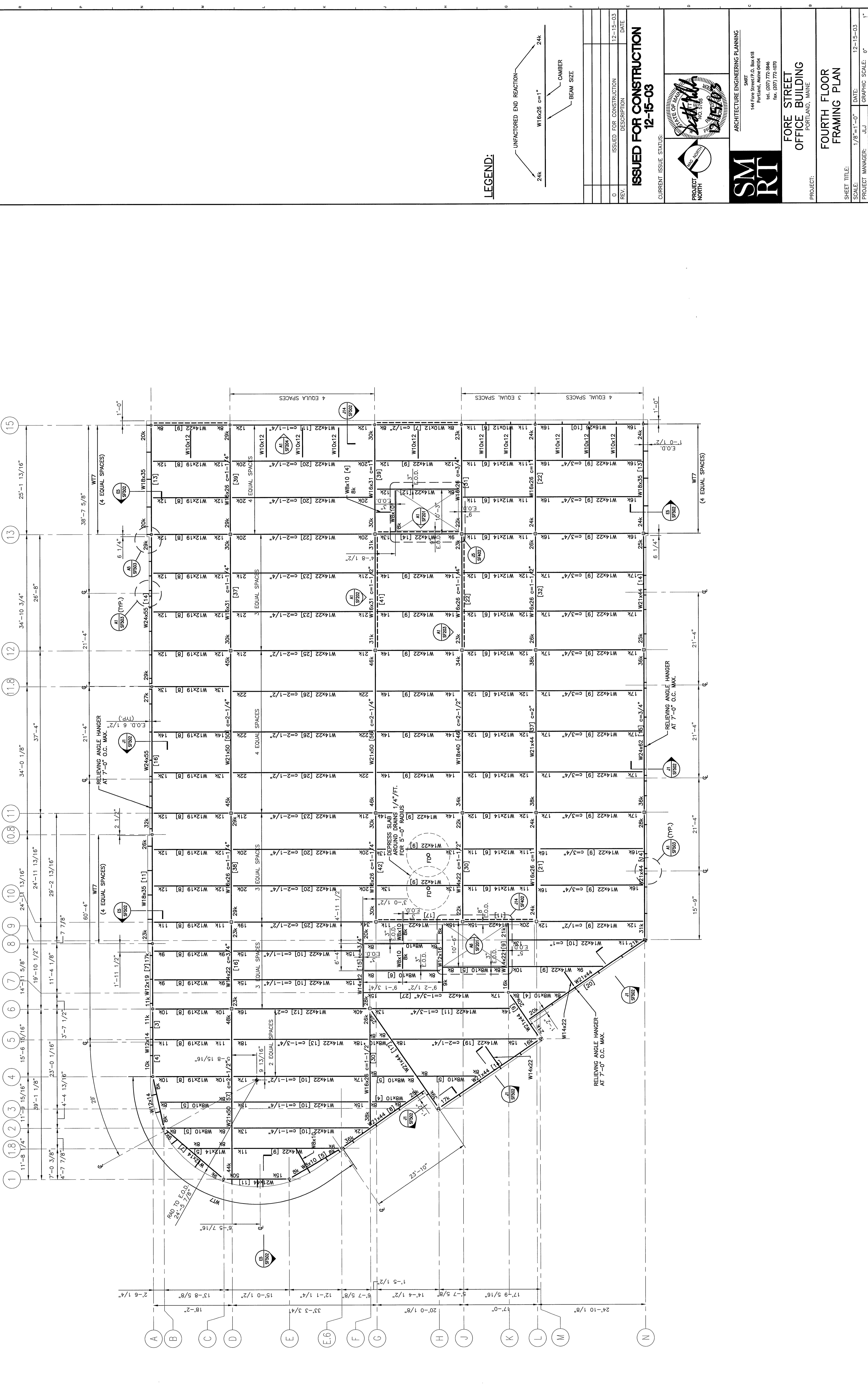
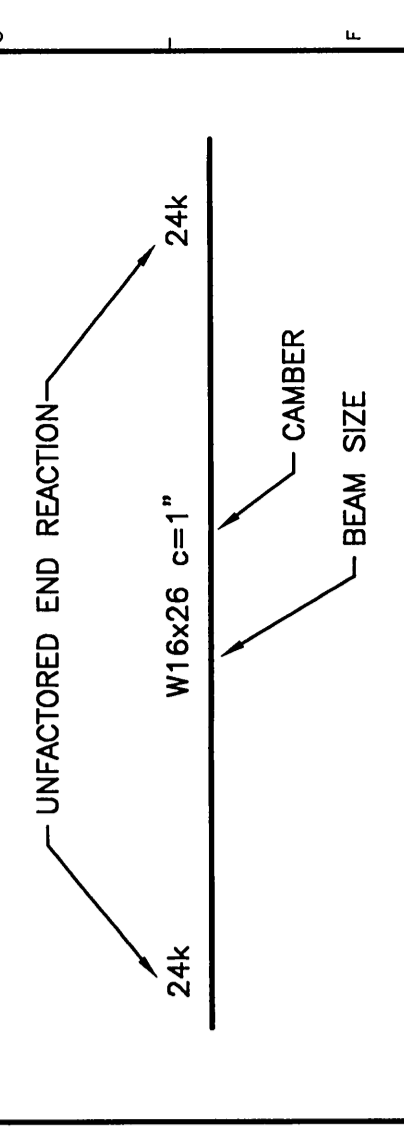


NOTE:

- SEE S6001 FOR STRUCTURAL GENERAL NOTES.
- TOP OF CONCRETE EL. 56'-8" UNLESS NOTED OTHERWISE.
- SEE S'501 FOR TYPICAL DETAILS.
- FLOOR DECK: 2VL18 WITH 3 1/2" OF CONCRETE COVER, 5 1/2" TOTAL THICKNESS, REINFORCED WITH 6x6-W2.1W2.1 W.W.F.

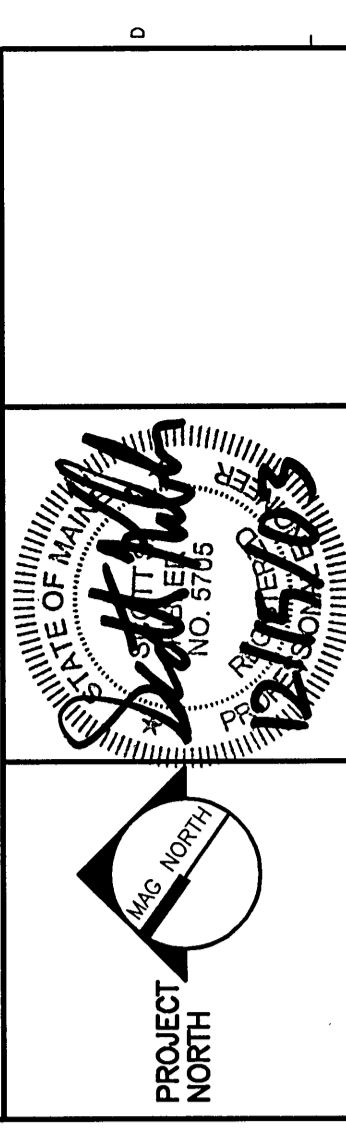


LEGEND:



REV.	DESCRIPTION	DATE
0	ISSUED FOR CONSTRUCTION	12-15-03

ISSUED FOR CONSTRUCTION
12-15-03



ARCHITECTURE ENGINEERING PLANNING
144 Fore Street P.O. Box 618
Portland, Maine 04109
Tel. (603) 772-3886
Fax. (603) 772-0990

**FORE STREET
OFFICE BUILDING**
PORTLAND, MAINE

**FOURTH FLOOR
FRAMING PLAN**

SHEET TITLE:	1/8"=1'-0"	DATE:	12-15-03
SCALE:	1/8"=1'-0"	GRAPHIC SCALE:	0'
PROJECT MANAGER:	JLJ	DATE:	12-15-03
JOB CAP/DRAWN:	RL/JSS	DATE:	12-15-03
A/E OF RECORD:	JLJ	DATE:	12-15-03
SMART CAD FILE:	SF104-03087	DATE:	12-15-03
PROJECT No.:	03087	DATE:	12-15-03

FOURTH FLOOR FRAMING PLAN
1/8"=1'-0"

A1