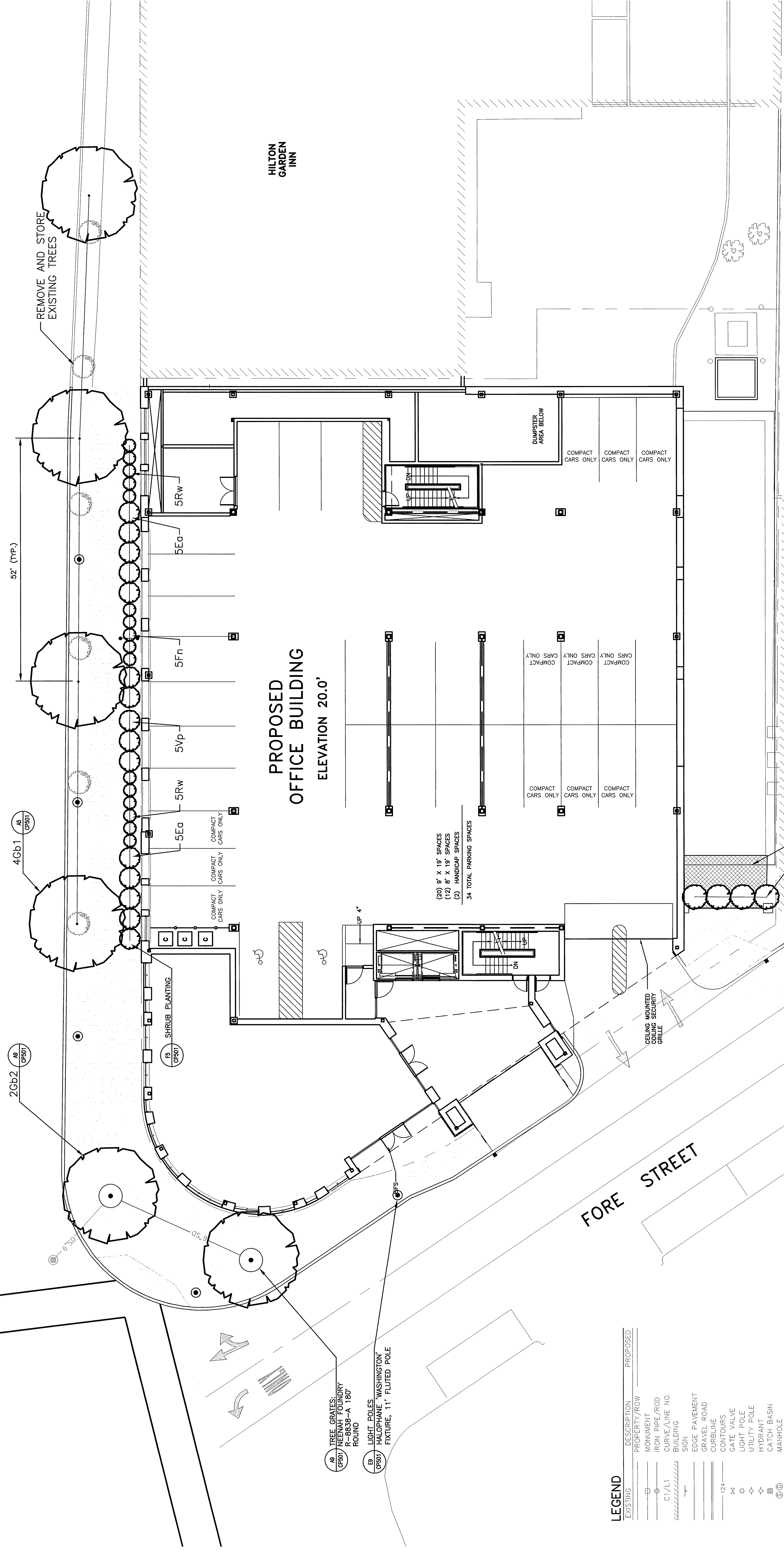


**LANDSCAPING NOTES:**

1. THE LANDSCAPE CONTRACTOR SHALL SUPPLY AND INSTALL ALL PLANTS IN SUFFICIENT QUANTITIES TO COMPLETE THE WORK AS SHOWN ON THE DRAWINGS. DISCREPANCIES BETWEEN QUANTITIES SHOWN ON THE DRAWINGS AND THE PLANT LIST SHALL BE REPORTED IMMEDIATELY TO THE ARCHITECT AND SHALL NOT ENTITLE THE CONTRACTOR TO ADDITIONAL REMEDIATION.
2. THE LANDSCAPE CONTRACTOR IS ADVISED THAT BELOW GRADE UTILITIES ARE SHOWN ON THE DRAWINGS. ANY PROPOSED PLANTING CONFLICT WITH ANY UTILITY. THE ARCHITECT SHALL BE NOTIFIED IMMEDIATELY FOR DECISION. DAMAGED AS A RESULT OF THE LANDSCAPE CONTRACTOR'S WORK SHALL BE REPAIRED AT THE CONTRACTOR'S EXPENSE AT NO ADDITIONAL COST TO THE OWNER.
3. ANY AND ALL PAVING, CURBING, UTILITIES, LAWN, ETC.
4. ALL PLANTING BEDS INCLUDING TREE AND SHRUB BEDS AS SHOWN ON THE DRAWINGS SHALL BE PREPARED WITH A 6" DEEP GROUND OR SHREDDED PINE OR HEMLOCK BARK MULCH. MULCH SHALL BE REVERSED BY THE ARCHITECT PRIOR TO INSTALLATION.
5. LOCATIONS OF PROPOSED PLANTINGS AND BED LINES SHALL BE REVERSED BY THE ARCHITECT PRIOR TO INSTALLATION.
6. THE LANDSCAPE CONTRACTOR SHALL RELOCATE ANY PLANT ACCORDING TO THE DIRECTION OF THE ARCHITECT.
7. ALL PLANT MATERIALS CALLED FOR AND INSTALLED SHALL MEET OR EXCEED SPECIFICATIONS OF THE "AMERICAN STANDARDS FOR NURSERY STOCK" (LATEST EDITION) AS SET FORTH BY THE AMERICAN ASSOCIATION OF NURSERMEN.
8. ALL PLANTING BEDS SHALL BE DEFINED BY A NEAT, SHOVEL-CUT BED LINE. BED LINES SHALL BE SMOOTH, CONSISTING OF SMOOTH CURVES AND SHARP LINES AND CORNERS.
9. IF, BECAUSE OF CULTURE REQUIREMENTS, AVAILABILITY, OR OTHER CIRCUMSTANCES, THE LANDSCAPE CONTRACTOR BELIEVES A PARTICULAR PLANT CALLED FOR IS INAPPROPRIATE, THE LANDSCAPE CONTRACTOR SHALL REPORT THE SITUATION IMMEDIATELY TO THE ARCHITECT FOR DECISION.
10. ALL DISTURBED AREAS NOT OTHERWISE COVERED SHALL RECEIVE 6" LOAM AND SEED.

FRANKLIN STREET ARTERIAL



**PLANT LIST**

MARK	SCIENTIFIC NAME / COMMON NAME	SIZE CAL	SIZE HT.	ROOT	REMARKS
Gb1*	Ginkgo Biloba/Maidenhair Tree	1 1/2"	-	B&B	Street Tree Form Matched Specimens
Gb2*	Ginkgo Biloba/Maidenhair Tree	2"	-	B&B	Street Tree Form and Quality Matched Specimens
En	Eucalyptus Albus Winged/Eucalyptus	-	2 1/2'	B&B	-
Vb	Viburnum Bodinieriense 'Down'	-	4'	B&B	Substrate from H&L List
Rw	Rhododendron 'Windbeam'	-	-	B&B	-
Rn	Rhododendron 'Northern Starburst'	-	24"	B&B	-
Tc	Taxus cuspidata/Japanese Yew	-	24"	B&B	-
Pt	Pachysandra Terminalis	-	-	Bare	-

\* NOTE: GINKGO SPECIES SHALL BE PROPAGATED FROM MALE SPECIMENS. PROVIDE CERTIFICATIONS FROM QUALIFIED NURSERY.

ISSUED FOR CONSTRUCTION  
12-15-03

CURRENT ISSUE STATUS:

ARCHITECTURE ENGINEERING PLANNING  
SMART  
144 Fore Street P.O. Box 618  
Portland, Maine 04104  
tel. (207) 772-3846  
fax. (207) 772-1000

**SM  
RT**

PROJECT:  
**FORE STREET  
OFFICE BUILDING**  
PORTLAND, MAINE

LANDSCAPE PLAN

SHEET TITLE:  
SHEET No. LP101  
PROJECT No. 03987

SCALE: 1"=10'  
DATE: GRAPHIC SCALE: 0'

PROJ. MANAGER: J/LJ  
JOB CAP/DRAWN: GDM/ROC  
A/E OF RECORD: LRB  
SMART CAD FILE: LP101-03987

LEGEND

EXISTING	DESCRIPTION	PROPERTY/ROW	PROPOSED
(Symbol)	MONUMENT		(Symbol)
(Symbol)	IRON PIPE/ROD		(Symbol)
(Symbol)	CURVE/LINE NO.		(Symbol)
(Symbol)	BUILDING		(Symbol)
(Symbol)	EDGE PAVEMENT		(Symbol)
(Symbol)	GRAVEL ROAD		(Symbol)
(Symbol)	CONTOURS		(Symbol)
(Symbol)	GATE VALVE		(Symbol)
(Symbol)	UTILITY POLE		(Symbol)
(Symbol)	HYDRANT		(Symbol)
(Symbol)	CATCH BASIN		(Symbol)
(Symbol)	MANHOLE		(Symbol)
(Symbol)	CHAIN LINK FENCE		(Symbol)
(Symbol)	DECIDUOUS TREE		(Symbol)
(Symbol)	GUARDRAIL		(Symbol)
(Symbol)	BENCHMARK		(Symbol)

GRAPHIC SCALE  
( IN FEET )  
1 inch = 10 ft.

PROGRESS PRINT