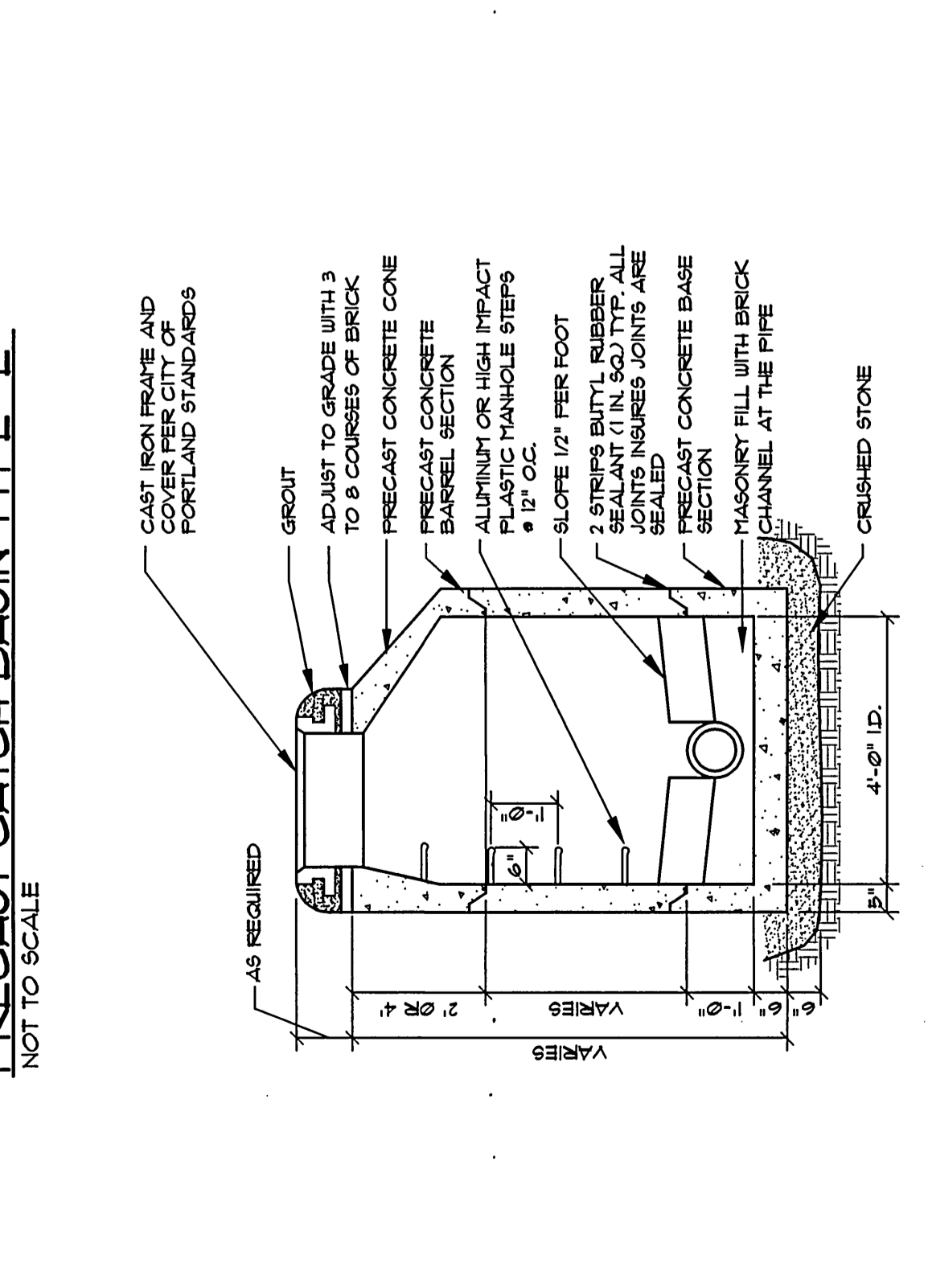


**SECTION A-A GRANITE CURB INLET**  
NOT TO SCALE

**NOTES:**

1. 4.0" I.D. TYPICAL. SORE STRUCTURES THAT REQUIRE LARGER I.D. PROVIDE SHOP DRAWINGS FOR APPROVAL.
2. DRAINAGE STRUCTURES TO BE DESIGNED FOR H-20 LOADINGS.
3. PIPE SIZES AND INVERTS AS NOTED ON PLANS.
4. CATCH BASIN FRAME AND GRATE TO ACCOMMODATE 2" MIN. GRATE EQUAL TO ENDSIDE FOUNDRY CR6A.

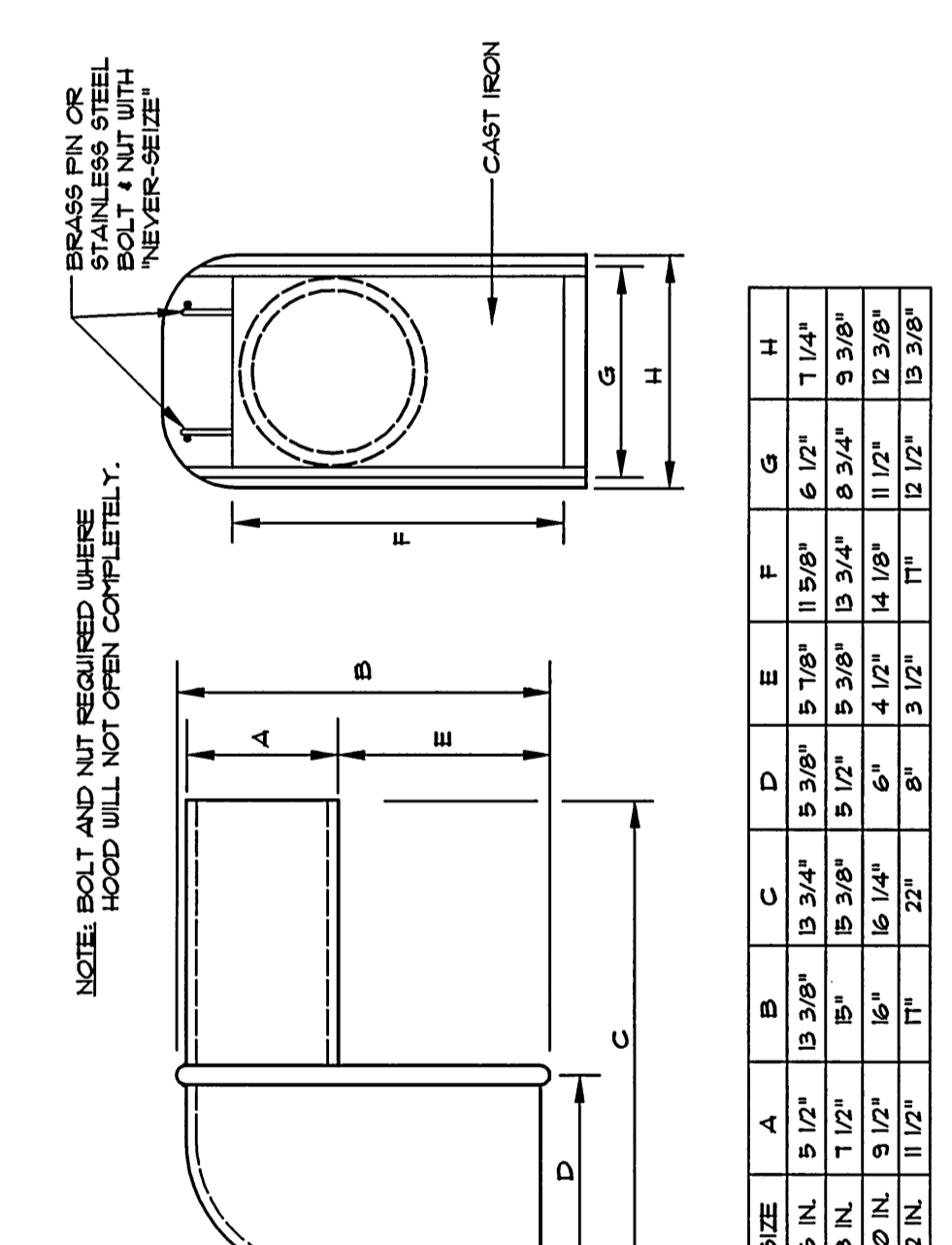
ENGINEER'S / OWNER REPRESENTATIVE'S APPROVAL



**PRECAST MANHOLE**  
NOT TO SCALE

**NOTES:**

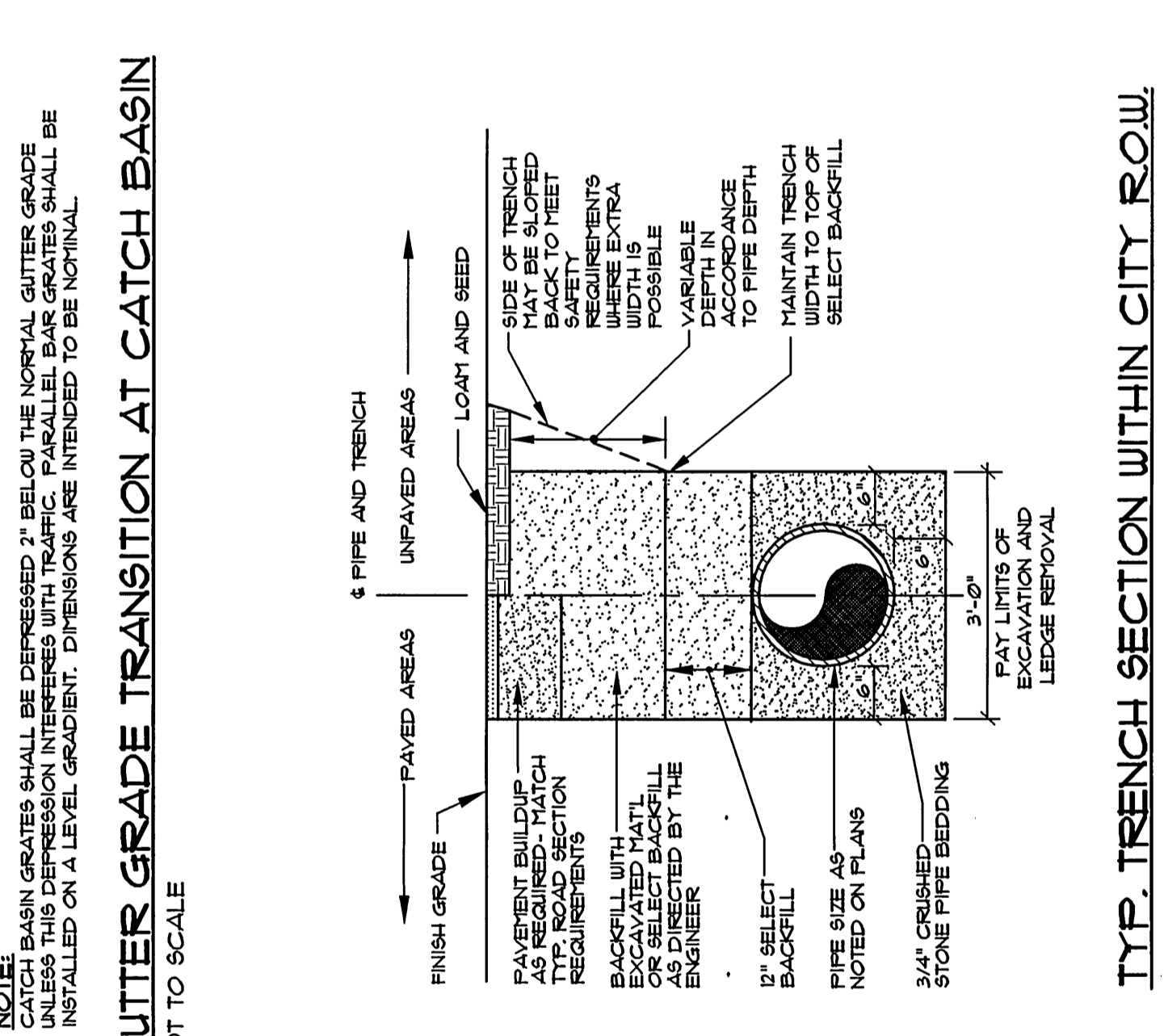
1. PIPE CONNECTIONS SHALL BE WATER-TIGHT FLEXIBLE BOOT CONNECTORS PROVIDES LEAK-PROOF CONNECTION.



**CATCH BASIN GRATE TRANSITION AT CATCH BASIN**  
NOT TO SCALE

**NOTE:**

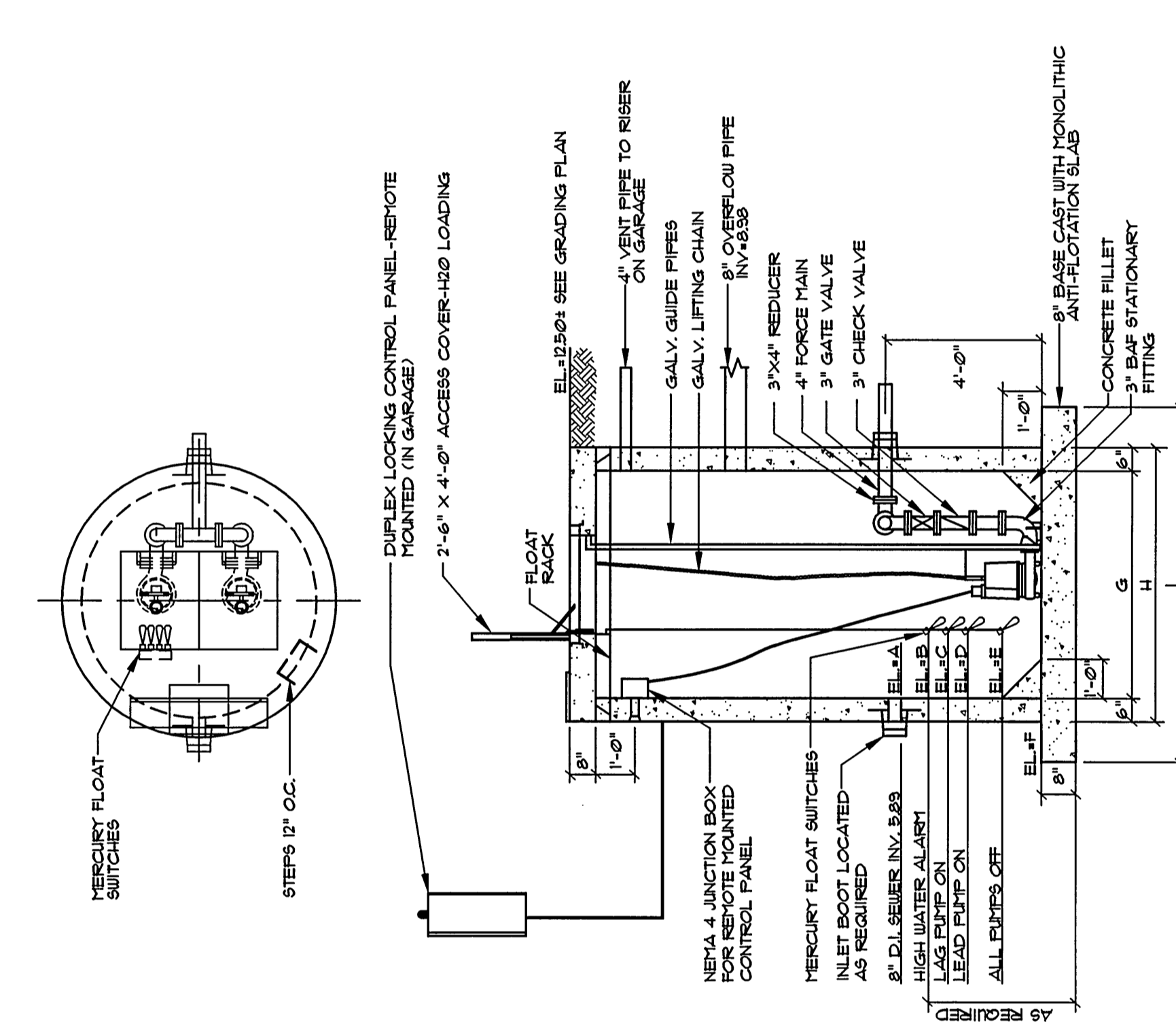
CATCH BASIN GRATES SHALL BE DEPRESSURED BELOW THE NORMAL GUTTER GRADE. THE GRATE SHALL BE INSTALLED ON A LEVEL GRADIENT. DIMENSIONS ARE INTENDED TO BE NORMAL.



**TYP. TRENCH SECTION WITHIN CITY ROW**  
NOT TO SCALE

**NOTES:**

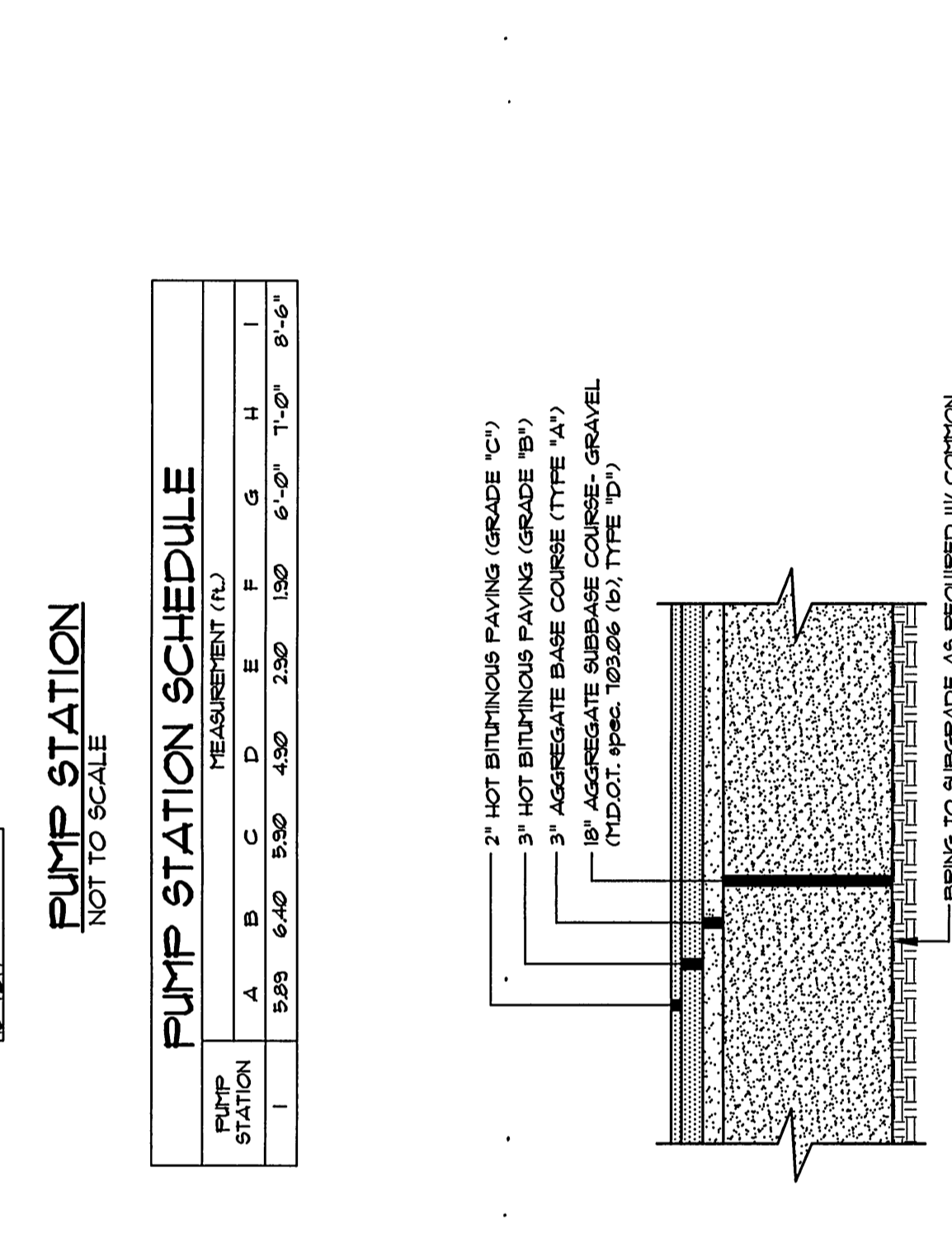
1. COMPACT GRAVEL SUBGRADE BASE COURSE TO 90% OF MAXIMUM DENSITY USING HEAVY ROLLER COMPACTION.
2. FINISH GRADE ELEVATIONS FOR CONSTRUCTION REFERENCE.



**PUMP STATION**  
NOT TO SCALE

**NOTES:**

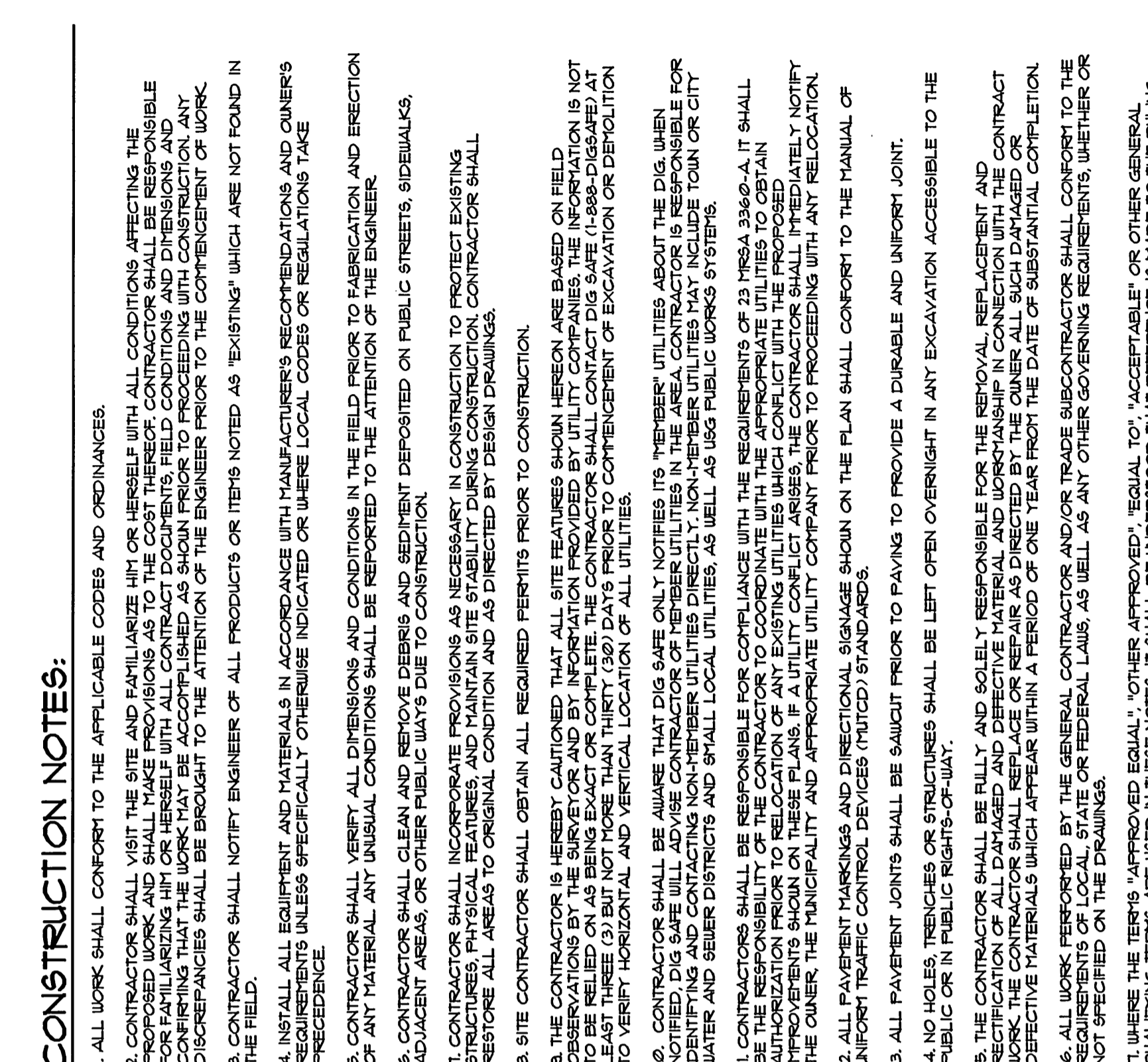
1. PRECAST CONCRETE CURB (TYP. 'A')
2. 2\"/>



**TYP. PAVED SECTION IN CITY ROW**  
NOT TO SCALE

**NOTES:**

1. COMPACT GRAVEL SUBGRADE BASE COURSE TO 90% OF MAXIMUM DENSITY USING HEAVY ROLLER COMPACTION.
2. FINISH GRADE ELEVATIONS FOR CONSTRUCTION REFERENCE.



**CONSTRUCTION NOTES:**

1. ALL WORK SHALL CONFORM TO THE APPLICABLE CODES AND ORDINANCES.
2. CONTRACTOR SHALL VISIT THE SITE AND FAMILIARIZE HIM OR HERSELF WITH ALL CONDITIONS AFFECTING THE PROJECT.
3. CONTRACTOR SHALL VERIFY ALL DIMENSIONS AND CONDITIONS IN THE FIELD PRIOR TO FABRICATION AND ERECTION OF ANY MATERIAL.
4. INSTALL ALL EQUIPMENT AND MATERIALS IN ACCORDANCE WITH MANUFACTURER'S RECOMMENDATIONS AND OWNERS REQUIREMENTS UNLESS SPECIFICALLY OTHERWISE INDICATED OR WHERE LOCAL CODES OR REGULATIONS TAKE PRECEDENCE.
5. CONTRACTOR SHALL VERIFY ALL DIMENSIONS AND CONDITIONS IN THE FIELD PRIOR TO FABRICATION AND ERECTION OF ANY MATERIAL.
6. CONTRACTOR SHALL CLEAN AND REMOVE DEBRIS AND SEDIMENT DEPOSITED ON PUBLIC STREETS, SIDEWALKS, ADJACENT AREAS OR OTHER PUBLIC WAYS DUE TO CONSTRUCTION.
7. CONTRACTOR SHALL INCORPORATE PROVISIONS AS NECESSARY IN CONSTRUCTION TO PROTECT EXISTING UTILITIES.
8. SITE CONTRACTOR SHALL OBTAIN ALL REQUIRED PERMITS PRIOR TO CONSTRUCTION.
9. THE CONTRACTOR SHALL BE RESPONSIBLE FOR ALL UTILITIES WHICH ARE NOT SHOWN ON THE PLANS.
10. CONTRACTOR SHALL VERIFY ALL DIMENSIONS AND CONDITIONS IN THE FIELD PRIOR TO FABRICATION AND ERECTION OF ANY MATERIAL.
11. CONTRACTOR SHALL CLEAN AND REMOVE DEBRIS AND SEDIMENT DEPOSITED ON PUBLIC STREETS, SIDEWALKS, ADJACENT AREAS OR OTHER PUBLIC WAYS DUE TO CONSTRUCTION.
12. CONTRACTOR SHALL INCORPORATE PROVISIONS AS NECESSARY IN CONSTRUCTION TO PROTECT EXISTING UTILITIES.
13. CONTRACTOR SHALL OBTAIN ALL REQUIRED PERMITS PRIOR TO CONSTRUCTION.
14. THE CONTRACTOR SHALL BE RESPONSIBLE FOR ALL UTILITIES WHICH ARE NOT SHOWN ON THE PLANS.
15. CONTRACTOR SHALL VERIFY ALL DIMENSIONS AND CONDITIONS IN THE FIELD PRIOR TO FABRICATION AND ERECTION OF ANY MATERIAL.
16. CONTRACTOR SHALL CLEAN AND REMOVE DEBRIS AND SEDIMENT DEPOSITED ON PUBLIC STREETS, SIDEWALKS, ADJACENT AREAS OR OTHER PUBLIC WAYS DUE TO CONSTRUCTION.
17. CONTRACTOR SHALL INCORPORATE PROVISIONS AS NECESSARY IN CONSTRUCTION TO PROTECT EXISTING UTILITIES.
18. CONTRACTOR SHALL OBTAIN ALL REQUIRED PERMITS PRIOR TO CONSTRUCTION.
19. THE CONTRACTOR SHALL BE RESPONSIBLE FOR ALL UTILITIES WHICH ARE NOT SHOWN ON THE PLANS.
20. CONTRACTOR SHALL VERIFY ALL DIMENSIONS AND CONDITIONS IN THE FIELD PRIOR TO FABRICATION AND ERECTION OF ANY MATERIAL.
21. CONTRACTOR SHALL CLEAN AND REMOVE DEBRIS AND SEDIMENT DEPOSITED ON PUBLIC STREETS, SIDEWALKS, ADJACENT AREAS OR OTHER PUBLIC WAYS DUE TO CONSTRUCTION.
22. CONTRACTOR SHALL INCORPORATE PROVISIONS AS NECESSARY IN CONSTRUCTION TO PROTECT EXISTING UTILITIES.
23. CONTRACTOR SHALL OBTAIN ALL REQUIRED PERMITS PRIOR TO CONSTRUCTION.
24. THE CONTRACTOR SHALL BE RESPONSIBLE FOR ALL UTILITIES WHICH ARE NOT SHOWN ON THE PLANS.
25. CONTRACTOR SHALL VERIFY ALL DIMENSIONS AND CONDITIONS IN THE FIELD PRIOR TO FABRICATION AND ERECTION OF ANY MATERIAL.
26. CONTRACTOR SHALL CLEAN AND REMOVE DEBRIS AND SEDIMENT DEPOSITED ON PUBLIC STREETS, SIDEWALKS, ADJACENT AREAS OR OTHER PUBLIC WAYS DUE TO CONSTRUCTION.
27. CONTRACTOR SHALL INCORPORATE PROVISIONS AS NECESSARY IN CONSTRUCTION TO PROTECT EXISTING UTILITIES.
28. CONTRACTOR SHALL OBTAIN ALL REQUIRED PERMITS PRIOR TO CONSTRUCTION.
29. THE CONTRACTOR SHALL BE RESPONSIBLE FOR ALL UTILITIES WHICH ARE NOT SHOWN ON THE PLANS.
30. CONTRACTOR SHALL VERIFY ALL DIMENSIONS AND CONDITIONS IN THE FIELD PRIOR TO FABRICATION AND ERECTION OF ANY MATERIAL.
31. CONTRACTOR SHALL CLEAN AND REMOVE DEBRIS AND SEDIMENT DEPOSITED ON PUBLIC STREETS, SIDEWALKS, ADJACENT AREAS OR OTHER PUBLIC WAYS DUE TO CONSTRUCTION.
32. CONTRACTOR SHALL INCORPORATE PROVISIONS AS NECESSARY IN CONSTRUCTION TO PROTECT EXISTING UTILITIES.
33. CONTRACTOR SHALL OBTAIN ALL REQUIRED PERMITS PRIOR TO CONSTRUCTION.
34. THE CONTRACTOR SHALL BE RESPONSIBLE FOR ALL UTILITIES WHICH ARE NOT SHOWN ON THE PLANS.

**ISSUED FOR CONSTRUCTION**  
12-15-03

CURRENT ISSUE STATUS:

REV.	DESCRIPTION	DATE
0	ISSUED FOR CONSTRUCTION	12-15-03

**SMRT**  
ARCHITECTURE ENGINEERING PLANNING

SUITE  
144 Fore Street 10.0, Box 418  
Portland, Maine 04104  
Tel. (207) 772-3846  
Fax. (207) 772-1070

PROJECT: FORE STREET OFFICE BUILDING  
PORTLAND, MAINE

SITE DETAILS

SHEET TITLE: AS SHOWN DATE: 12-15-03  
PROJECT MANAGER: JLI GRAPHIC SCALE: 0"  
JOB CAP/DRAWN: ASB  
TYPE OF RECORD: LBB  
SHEET NO: CP502  
PROJECT NO: CP502-03087