

NOTE:

1. SEE S2001 FOR STRUCTURAL GENERAL NOTES.

FOUNDATION PERMITTING
10-29-03

ARCHITECTURE ENGINEERING PLANNING
SMI RTI
144 State St., 3rd Fl.
Portland, Maine 04101
Tel: (207) 771-5844
Fax: (207) 771-5870

FORE STREET OFFICE BUILDING
PORTLAND, MAINE

SECTION TITLE: FOUNDATION SECTIONS AND DETAILS

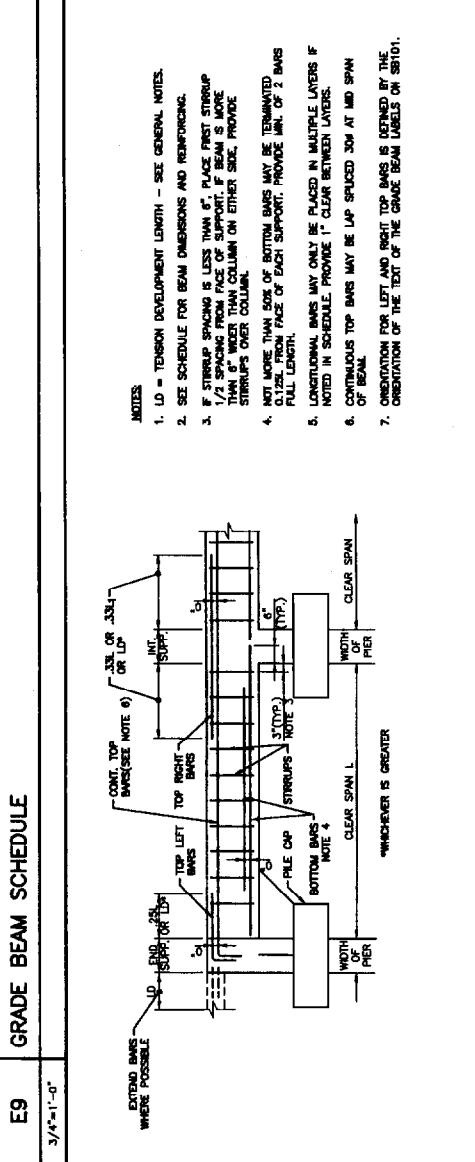
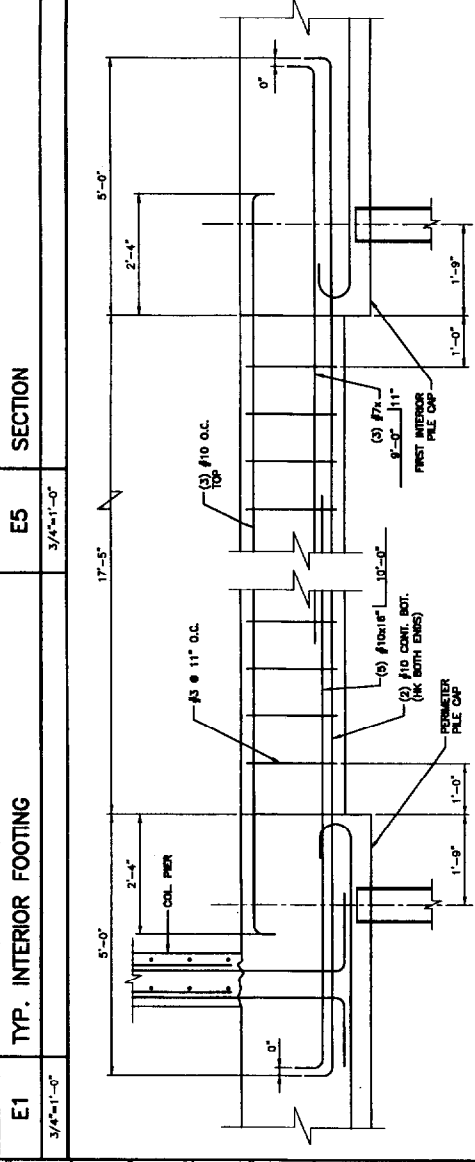
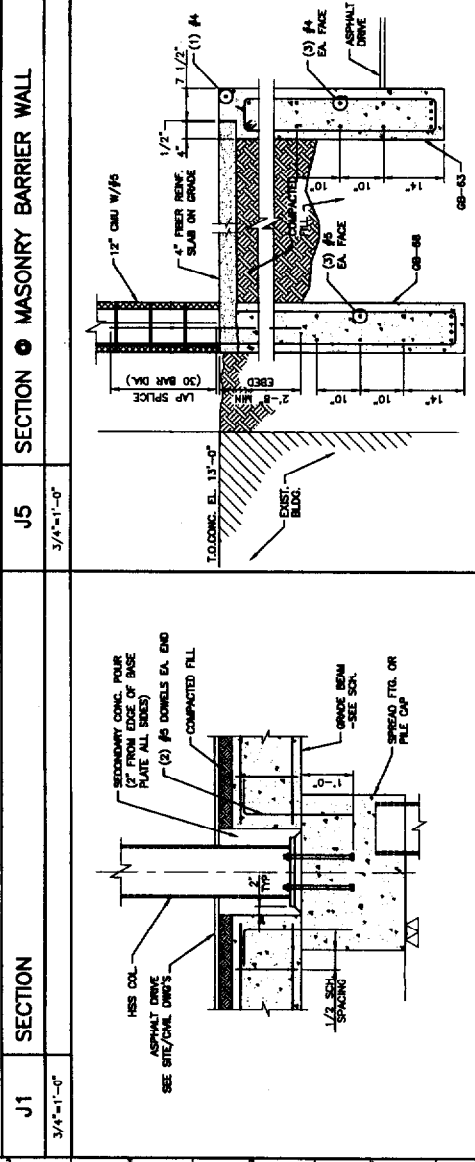
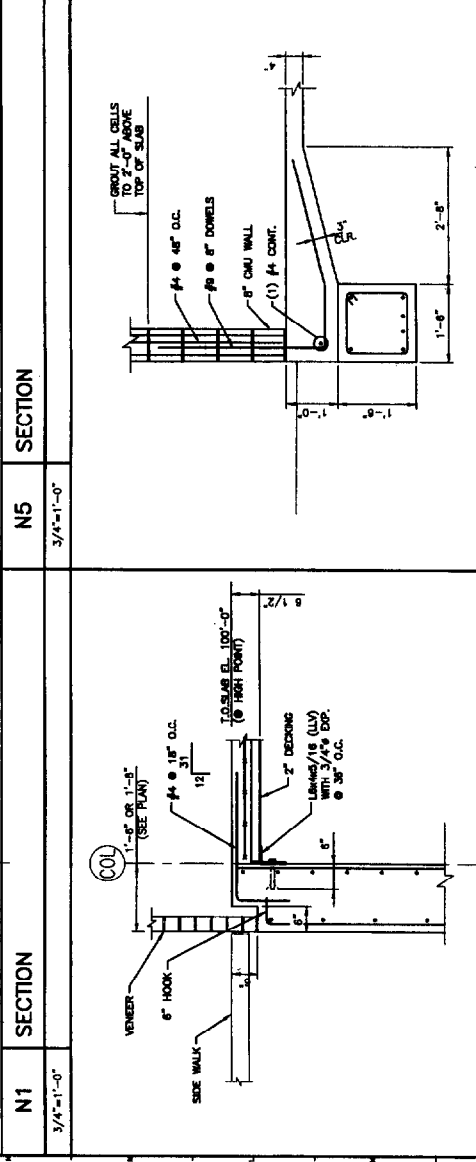
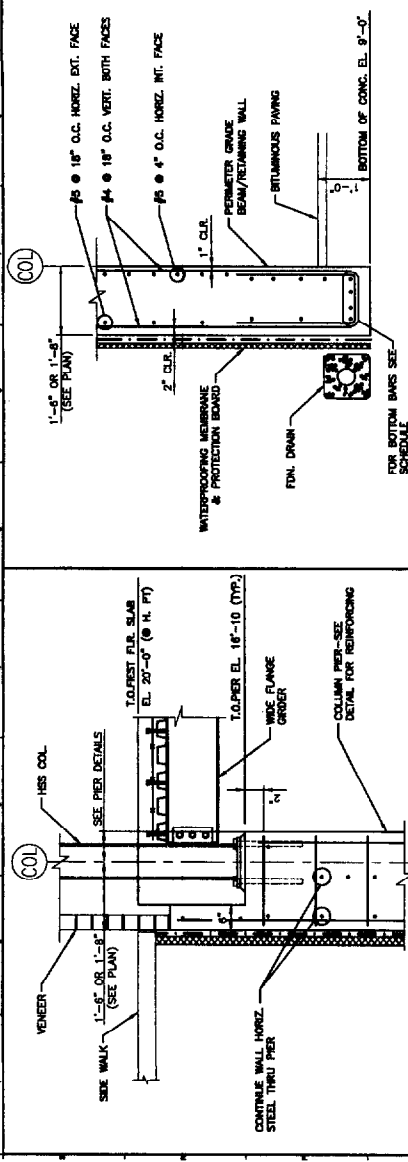
PROJECT No. SB503

REV.	DESCRIPTION	DATE

SHRIT TITLE: FOUNDATION SECTIONS AND DETAILS
SCALE: AS NOTED
PROJECT MANAGER: JLU
JOB CAP/DRAWING: RLL/JSS
DATE OF RECORD: JLU
SMART CAD FILE: SB503-00067
PROJECT No.: 03007

GRADE BEAM SCHEDULE

MARK	SIZE (L x H)	BOTTOM BARS	TOP BARS	REMARKS
GR-1	18"x18"	3 #5	3 #5	SEE NS FOR HORIZ. AND VERT. FACE REIN. (TOP)
GR-2	18"x18"	3 #5	3 #5	SEE NS FOR HORIZ. AND VERT. FACE REIN. (TOP)
GR-3	18"x18"	3 #5	3 #5	SEE NS FOR HORIZ. AND VERT. FACE REIN. (TOP)
GR-4	18"x18"	3 #5	3 #5	SEE NS FOR HORIZ. AND VERT. FACE REIN. (TOP)
GR-5	18"x18"	3 #5	3 #5	SEE NS FOR HORIZ. AND VERT. FACE REIN. (TOP)
GR-6	18"x18"	3 #5	3 #5	SEE NS FOR HORIZ. AND VERT. FACE REIN. (TOP)
GR-7	18"x18"	3 #5	3 #5	SEE NS FOR HORIZ. AND VERT. FACE REIN. (TOP)
GR-8	18"x18"	3 #5	3 #5	SEE NS FOR HORIZ. AND VERT. FACE REIN. (TOP)
GR-9	18"x18"	3 #5	3 #5	SEE NS FOR HORIZ. AND VERT. FACE REIN. (TOP)
GR-10	18"x18"	3 #5	3 #5	SEE NS FOR HORIZ. AND VERT. FACE REIN. (TOP)
GR-11	18"x18"	3 #5	3 #5	SEE NS FOR HORIZ. AND VERT. FACE REIN. (TOP)
GR-12	18"x18"	3 #5	3 #5	SEE NS FOR HORIZ. AND VERT. FACE REIN. (TOP)
GR-13	18"x18"	3 #5	3 #5	SEE NS FOR HORIZ. AND VERT. FACE REIN. (TOP)
GR-14	18"x18"	3 #5	3 #5	SEE NS FOR HORIZ. AND VERT. FACE REIN. (TOP)
GR-15	18"x18"	3 #5	3 #5	SEE NS FOR HORIZ. AND VERT. FACE REIN. (TOP)
GR-16	18"x18"	3 #5	3 #5	SEE NS FOR HORIZ. AND VERT. FACE REIN. (TOP)
GR-17	18"x18"	3 #5	3 #5	SEE NS FOR HORIZ. AND VERT. FACE REIN. (TOP)
GR-18	18"x18"	3 #5	3 #5	SEE NS FOR HORIZ. AND VERT. FACE REIN. (TOP)
GR-19	18"x18"	3 #5	3 #5	SEE NS FOR HORIZ. AND VERT. FACE REIN. (TOP)
GR-20	18"x18"	3 #5	3 #5	SEE NS FOR HORIZ. AND VERT. FACE REIN. (TOP)
GR-21	18"x18"	3 #5	3 #5	SEE NS FOR HORIZ. AND VERT. FACE REIN. (TOP)
GR-22	18"x18"	3 #5	3 #5	SEE NS FOR HORIZ. AND VERT. FACE REIN. (TOP)
GR-23	18"x18"	3 #5	3 #5	SEE NS FOR HORIZ. AND VERT. FACE REIN. (TOP)
GR-24	18"x18"	3 #5	3 #5	SEE NS FOR HORIZ. AND VERT. FACE REIN. (TOP)
GR-25	18"x18"	3 #5	3 #5	SEE NS FOR HORIZ. AND VERT. FACE REIN. (TOP)
GR-26	18"x18"	3 #5	3 #5	SEE NS FOR HORIZ. AND VERT. FACE REIN. (TOP)
GR-27	18"x18"	3 #5	3 #5	SEE NS FOR HORIZ. AND VERT. FACE REIN. (TOP)
GR-28	18"x18"	3 #5	3 #5	SEE NS FOR HORIZ. AND VERT. FACE REIN. (TOP)
GR-29	18"x18"	3 #5	3 #5	SEE NS FOR HORIZ. AND VERT. FACE REIN. (TOP)
GR-30	18"x18"	3 #5	3 #5	SEE NS FOR HORIZ. AND VERT. FACE REIN. (TOP)
GR-31	18"x18"	3 #5	3 #5	SEE NS FOR HORIZ. AND VERT. FACE REIN. (TOP)
GR-32	18"x18"	3 #5	3 #5	SEE NS FOR HORIZ. AND VERT. FACE REIN. (TOP)
GR-33	18"x18"	3 #5	3 #5	SEE NS FOR HORIZ. AND VERT. FACE REIN. (TOP)
GR-34	18"x18"	3 #5	3 #5	SEE NS FOR HORIZ. AND VERT. FACE REIN. (TOP)
GR-35	18"x18"	3 #5	3 #5	SEE NS FOR HORIZ. AND VERT. FACE REIN. (TOP)
GR-36	18"x18"	3 #5	3 #5	SEE NS FOR HORIZ. AND VERT. FACE REIN. (TOP)
GR-37	18"x18"	3 #5	3 #5	SEE NS FOR HORIZ. AND VERT. FACE REIN. (TOP)
GR-38	18"x18"	3 #5	3 #5	SEE NS FOR HORIZ. AND VERT. FACE REIN. (TOP)
GR-39	18"x18"	3 #5	3 #5	SEE NS FOR HORIZ. AND VERT. FACE REIN. (TOP)
GR-40	18"x18"	3 #5	3 #5	SEE NS FOR HORIZ. AND VERT. FACE REIN. (TOP)
GR-41	18"x18"	3 #5	3 #5	SEE NS FOR HORIZ. AND VERT. FACE REIN. (TOP)
GR-42	18"x18"	3 #5	3 #5	SEE NS FOR HORIZ. AND VERT. FACE REIN. (TOP)
GR-43	18"x18"	3 #5	3 #5	SEE NS FOR HORIZ. AND VERT. FACE REIN. (TOP)
GR-44	18"x18"	3 #5	3 #5	SEE NS FOR HORIZ. AND VERT. FACE REIN. (TOP)
GR-45	18"x18"	3 #5	3 #5	SEE NS FOR HORIZ. AND VERT. FACE REIN. (TOP)
GR-46	18"x18"	3 #5	3 #5	SEE NS FOR HORIZ. AND VERT. FACE REIN. (TOP)
GR-47	18"x18"	3 #5	3 #5	SEE NS FOR HORIZ. AND VERT. FACE REIN. (TOP)
GR-48	18"x18"	3 #5	3 #5	SEE NS FOR HORIZ. AND VERT. FACE REIN. (TOP)
GR-49	18"x18"	3 #5	3 #5	SEE NS FOR HORIZ. AND VERT. FACE REIN. (TOP)
GR-50	18"x18"	3 #5	3 #5	SEE NS FOR HORIZ. AND VERT. FACE REIN. (TOP)
GR-51	18"x18"	3 #5	3 #5	SEE NS FOR HORIZ. AND VERT. FACE REIN. (TOP)
GR-52	18"x18"	3 #5	3 #5	SEE NS FOR HORIZ. AND VERT. FACE REIN. (TOP)
GR-53	18"x18"	3 #5	3 #5	SEE NS FOR HORIZ. AND VERT. FACE REIN. (TOP)
GR-54	18"x18"	3 #5	3 #5	SEE NS FOR HORIZ. AND VERT. FACE REIN. (TOP)
GR-55	18"x18"	3 #5	3 #5	SEE NS FOR HORIZ. AND VERT. FACE REIN. (TOP)
GR-56	18"x18"	3 #5	3 #5	SEE NS FOR HORIZ. AND VERT. FACE REIN. (TOP)
GR-57	18"x18"	3 #5	3 #5	SEE NS FOR HORIZ. AND VERT. FACE REIN. (TOP)
GR-58	18"x18"	3 #5	3 #5	SEE NS FOR HORIZ. AND VERT. FACE REIN. (TOP)
GR-59	18"x18"	3 #5	3 #5	SEE NS FOR HORIZ. AND VERT. FACE REIN. (TOP)
GR-60	18"x18"	3 #5	3 #5	SEE NS FOR HORIZ. AND VERT. FACE REIN. (TOP)
GR-61	18"x18"	3 #5	3 #5	SEE NS FOR HORIZ. AND VERT. FACE REIN. (TOP)
GR-62	18"x18"	3 #5	3 #5	SEE NS FOR HORIZ. AND VERT. FACE REIN. (TOP)
GR-63	18"x18"	3 #5	3 #5	SEE NS FOR HORIZ. AND VERT. FACE REIN. (TOP)
GR-64	18"x18"	3 #5	3 #5	SEE NS FOR HORIZ. AND VERT. FACE REIN. (TOP)
GR-65	18"x18"	3 #5	3 #5	SEE NS FOR HORIZ. AND VERT. FACE REIN. (TOP)
GR-66	18"x18"	3 #5	3 #5	SEE NS FOR HORIZ. AND VERT. FACE REIN. (TOP)
GR-67	18"x18"	3 #5	3 #5	SEE NS FOR HORIZ. AND VERT. FACE REIN. (TOP)
GR-68	18"x18"	3 #5	3 #5	SEE NS FOR HORIZ. AND VERT. FACE REIN. (TOP)
GR-69	18"x18"	3 #5	3 #5	SEE NS FOR HORIZ. AND VERT. FACE REIN. (TOP)
GR-70	18"x18"	3 #5	3 #5	SEE NS FOR HORIZ. AND VERT. FACE REIN. (TOP)
GR-71	18"x18"	3 #5	3 #5	SEE NS FOR HORIZ. AND VERT. FACE REIN. (TOP)
GR-72	18"x18"	3 #5	3 #5	SEE NS FOR HORIZ. AND VERT. FACE REIN. (TOP)
GR-73	18"x18"	3 #5	3 #5	SEE NS FOR HORIZ. AND VERT. FACE REIN. (TOP)
GR-74	18"x18"	3 #5	3 #5	SEE NS FOR HORIZ. AND VERT. FACE REIN. (TOP)
GR-75	18"x18"	3 #5	3 #5	SEE NS FOR HORIZ. AND VERT. FACE REIN. (TOP)
GR-76	18"x18"	3 #5	3 #5	SEE NS FOR HORIZ. AND VERT. FACE REIN. (TOP)
GR-77	18"x18"	3 #5	3 #5	SEE NS FOR HORIZ. AND VERT. FACE REIN. (TOP)
GR-78	18"x18"	3 #5	3 #5	SEE NS FOR HORIZ. AND VERT. FACE REIN. (TOP)
GR-79	18"x18"	3 #5	3 #5	SEE NS FOR HORIZ. AND VERT. FACE REIN. (TOP)
GR-80	18"x18"	3 #5	3 #5	SEE NS FOR HORIZ. AND VERT. FACE REIN. (TOP)
GR-81	18"x18"	3 #5	3 #5	SEE NS FOR HORIZ. AND VERT. FACE REIN. (TOP)
GR-82	18"x18"	3 #5	3 #5	SEE NS FOR HORIZ. AND VERT. FACE REIN. (TOP)
GR-83	18"x18"	3 #5	3 #5	SEE NS FOR HORIZ. AND VERT. FACE REIN. (TOP)
GR-84	18"x18"	3 #5	3 #5	SEE NS FOR HORIZ. AND VERT. FACE REIN. (TOP)
GR-85	18"x18"	3 #5	3 #5	SEE NS FOR HORIZ. AND VERT. FACE REIN. (TOP)
GR-86	18"x18"	3 #5	3 #5	SEE NS FOR HORIZ. AND VERT. FACE REIN. (TOP)
GR-87	18"x18"	3 #5	3 #5	SEE NS FOR HORIZ. AND VERT. FACE REIN. (TOP)
GR-88	18"x18"	3 #5	3 #5	SEE NS FOR HORIZ. AND VERT. FACE REIN. (TOP)
GR-89	18"x18"	3 #5	3 #5	SEE NS FOR HORIZ. AND VERT. FACE REIN. (TOP)
GR-90	18"x18"	3 #5	3 #5	SEE NS FOR HORIZ. AND VERT. FACE REIN. (TOP)
GR-91	18"x18"	3 #5	3 #5	SEE NS FOR HORIZ. AND VERT. FACE REIN. (TOP)
GR-92	18"x18"	3 #5	3 #5	SEE NS FOR HORIZ. AND VERT. FACE REIN. (TOP)
GR-93	18"x18"	3 #5	3 #5	SEE NS FOR HORIZ. AND VERT. FACE REIN. (TOP)
GR-94	18"x18"	3 #5	3 #5	SEE NS FOR HORIZ. AND VERT. FACE REIN. (TOP)
GR-95	18"x18"	3 #5	3 #5	SEE NS FOR HORIZ. AND VERT. FACE REIN. (TOP)
GR-96	18"x18"	3 #5	3 #5	SEE NS FOR HORIZ. AND VERT. FACE REIN. (TOP)
GR-97	18"x18"	3 #5	3 #5	SEE NS FOR HORIZ. AND VERT. FACE REIN. (TOP)
GR-98	18"x18"	3 #5	3 #5	SEE NS FOR HORIZ. AND VERT. FACE REIN. (TOP)
GR-99	18"x18"	3 #5	3 #5	SEE NS FOR HORIZ. AND VERT. FACE REIN. (TOP)
GR-100	18"x18"	3 #5	3 #5	SEE NS FOR HORIZ. AND VERT. FACE REIN. (TOP)



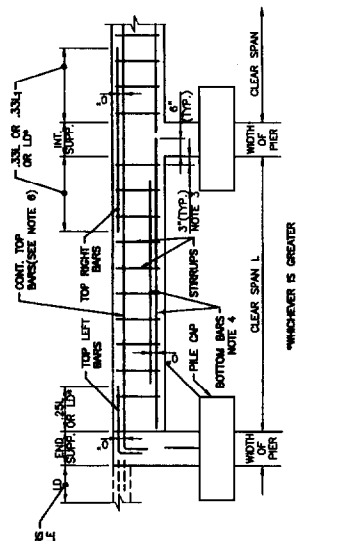
GRADE BEAM SCHEDULE

E9 3/4" x 1'-0"

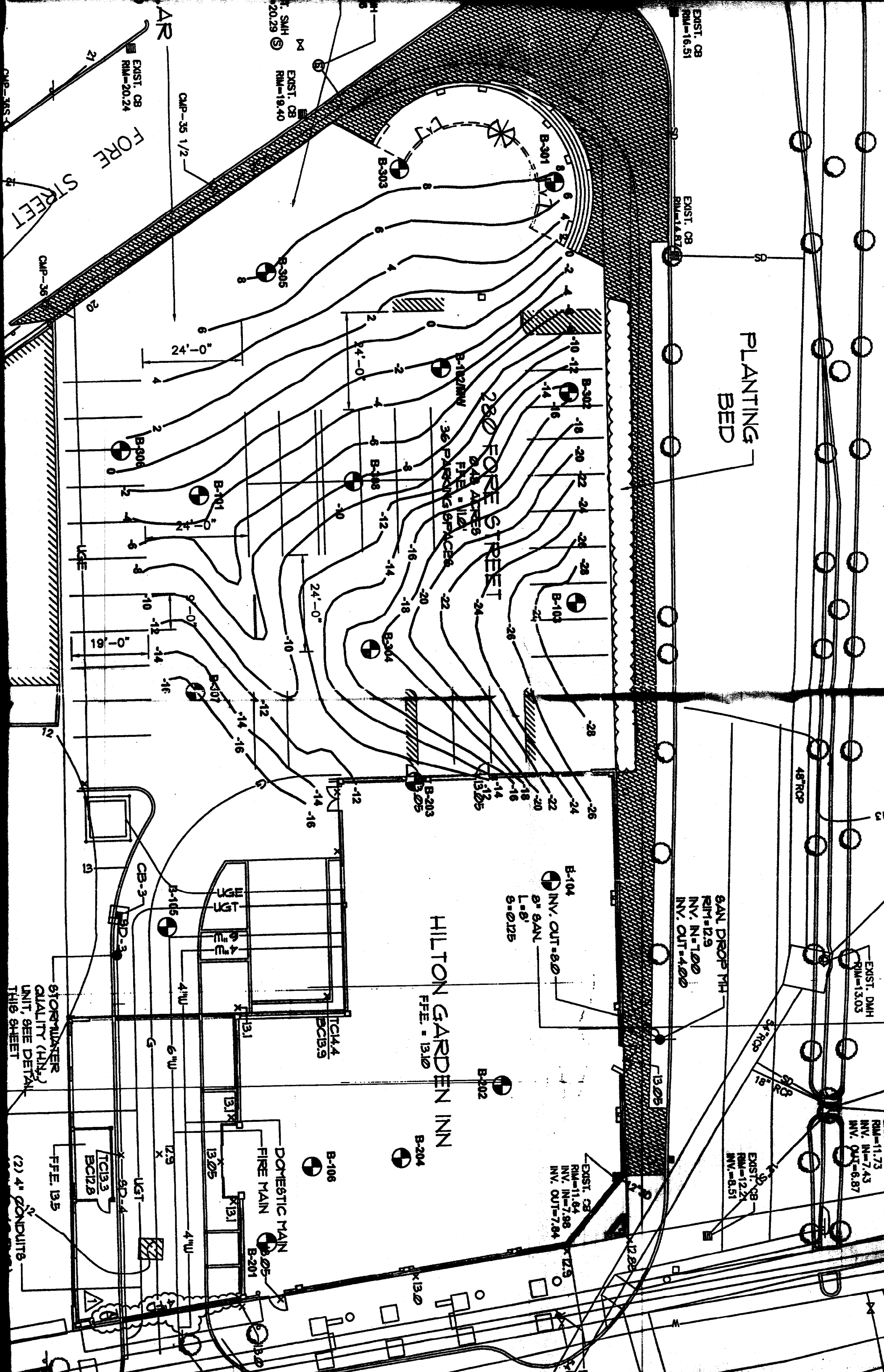
A9 TYPICAL CONCRETE BEAM DETAIL

1/2" x 1'-0"

- #### NOTES
- 1. LD = TENSION DEVELOPMENT LENGTH - SEE GENERAL NOTES.
 - 2. SEE SCHEDULE FOR BEAM DIMENSIONS AND REINFORCING.
 - 3. IF STRUTS SPACING IS LESS THAN 16", PLACE FIRST STRUT IN 4" FROM COLUMN ON EITHER SIDE. PROVIDE STRUTS OVER COLUMN.
 - 4. NOT MORE THAN SOLE OF BOTTOM BARS MAY BE TERMINATED 12" FROM FACE OF EACH SUPPORT. PROVIDE MIN. OF 2 BARS FULL LENGTH.
 - 5. LONGITUDINAL BARS MAY ONLY BE PLACED IN MULTIPLE LAYERS IF NOTED IN SCHEDULE. PROVIDE 1" CLEAR BETWEEN LAYERS.
 - 6. CONTIGUOUS TOP BARS MAY BE LAP SPOUED 30" AT MID SPAN OF BEAM.
 - 7. ORIENTATION FOR LEFT AND RIGHT TOP BARS IS DEFINED BY THE ORIENTATION OF THE TEXT OF THE GRADE BEAM LABELS ON S2101.



PROJECT No. SB503



PLANTING
BED

FORE STREET
28' FORE STREET
0.48 ACRES
36 PARKING SPACES

HILTON GARDEN INN
F.F.E. = 13.10

SAN DROP MAIN
RIM=12.9
INV. IN=7.00
INV. OUT=4.00

B-104
INV. OUT=8.00
8" SAN
L=8'
S=0.125

EXIST. CB
RIM=11.64
INV. IN=7.98
INV. OUT=7.84

EXIST. CB
RIM=12.21
INV.=8.51

EXIST. DMH
RIM=13.03

RIM=11.73
INV. IN=7.43
INV. OUT=6.87

FORE STREET
EXIST. CB
RIM=20.24

EXIST. CB
RIM=14.87

EXIST. CB
RIM=16.51

AMP-35 1/2
AMP-36

STORAGE WATER
QUALITY UNIT, SEE DETAIL
THIS SHEET

F.F.E. B.5
TC13.3
BC12.5
(2) 4" CONDUITS

UGT

DOMESTIC MAIN
FIRE MAIN
B-201

12

9'-0"

24'-0"

24'-0"

24'-0"

24'-0"

24'-0"

24'-0"

24'-0"

24'-0"

24'-0"

4" W

6" W

4" W

4" W

4" W

4" W

4" W

4" W

4" W

4" W

4" W

4" W

4" W

4" W

4" W

4" W

6" W

4" W

4" W

4" W

4" W

4" W

4" W

4" W

4" W

4" W

4" W

4" W

4" W

4" W

LEGEND

Approximate Test Boring Location

Interpretive Bedrock Surface Contour (Elevation Feet)

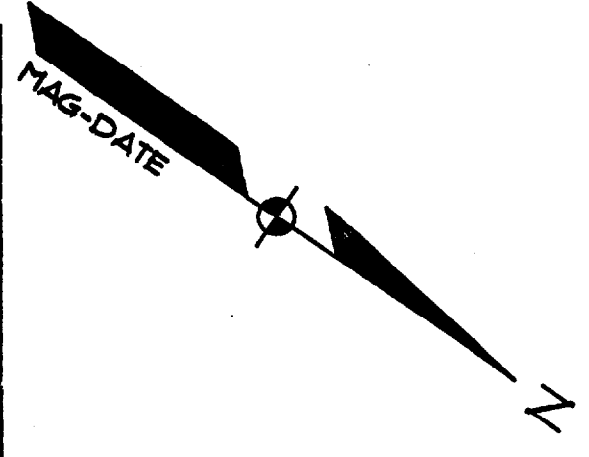
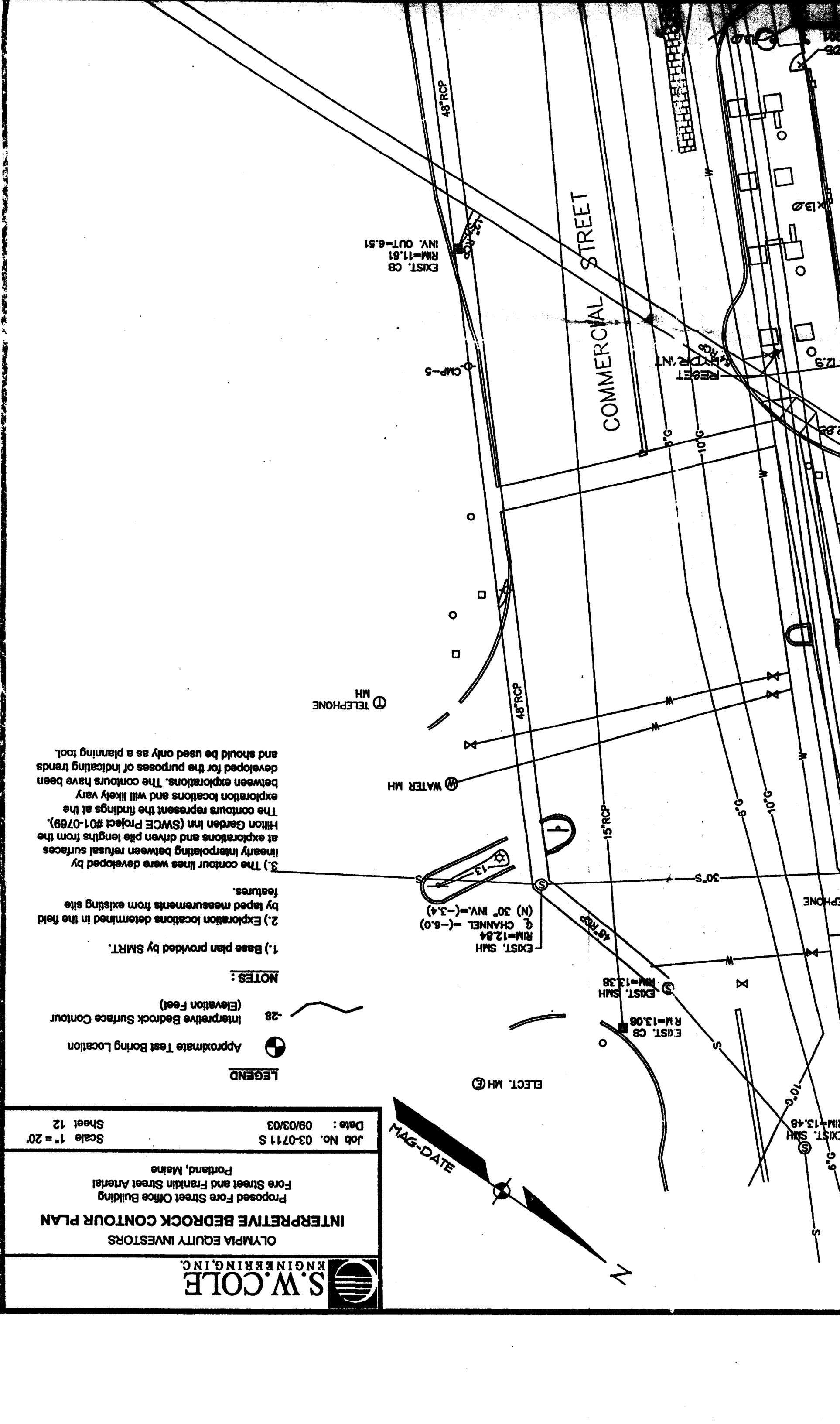
-28

NOTES:

1.) Base plan provided by SMRT.

2.) Exploration locations determined in the field by taped measurements from existing site features.

3.) The contour lines were developed by linearly interpolating between refusal surfaces at explorations and driven pile lengths from the Hilton Garden Inn (SWCE Project #01-0769). The contours represent the findings at the exploration locations and will likely vary between explorations. The contours have been developed for the purposes of indicating trends and should be used only as a planning tool.



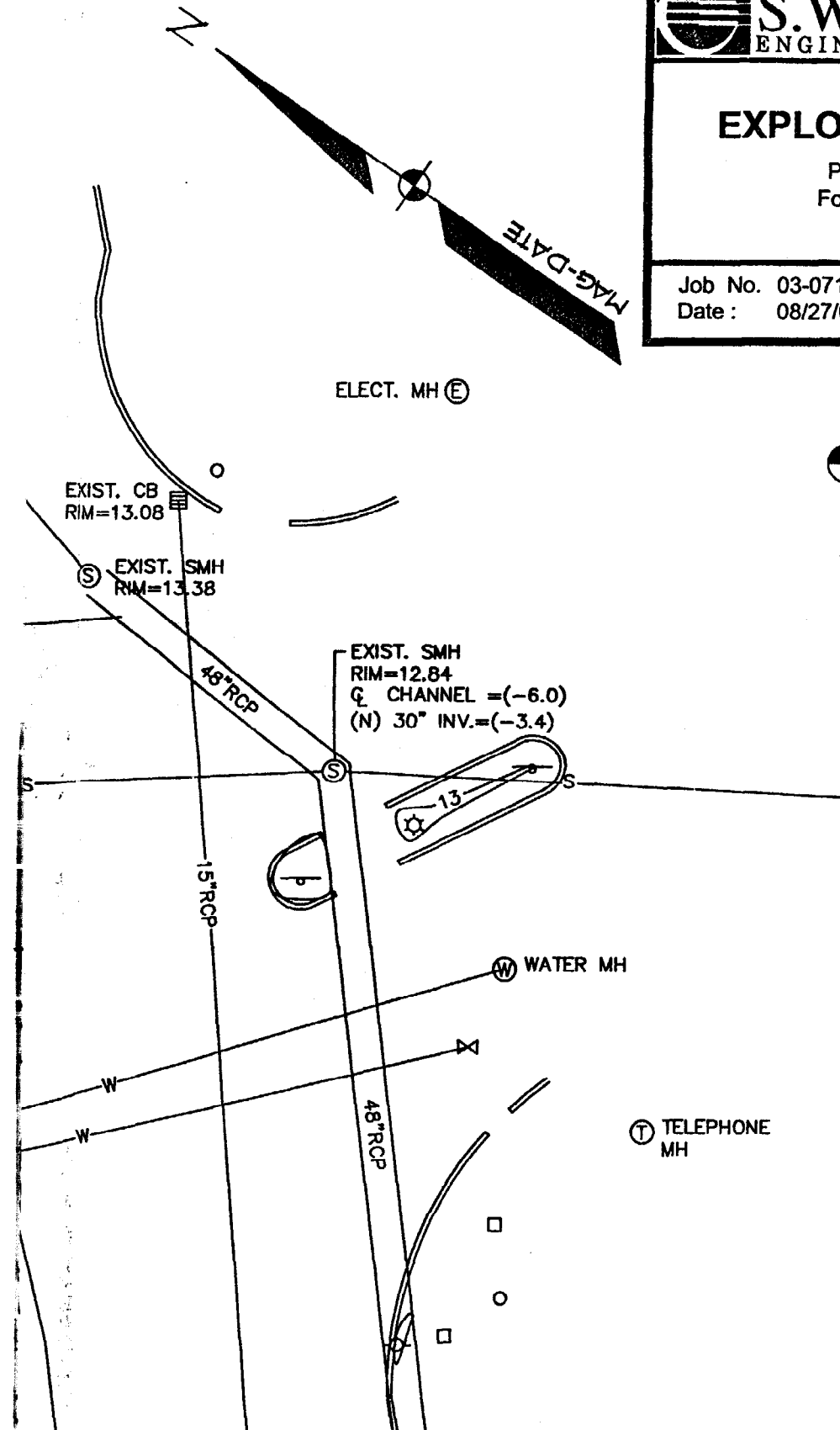


OLYMPIA EQUITY INVESTORS
EXPLORATION LOCATION PLAN

Proposed Fore Street Office Building
Fore Street and Franklin Street Arterial
Portland, Maine

Job No. 03-0711 S
Date: 08/27/03

Scale 1" = 20'
Sheet 1

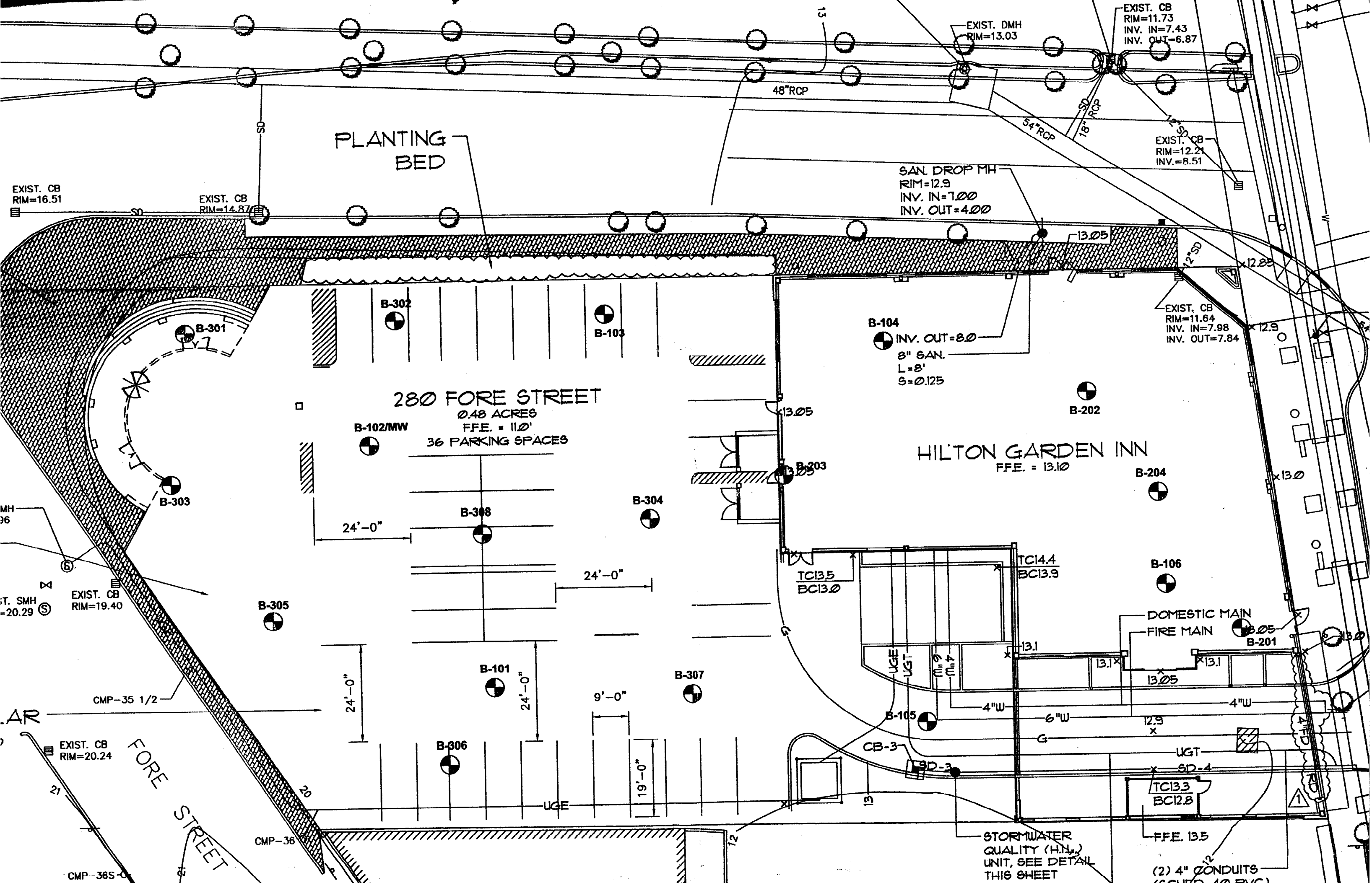


LEGEND

Approximate Test Boring Location

NOTES :

- 1.) Base plan provided by SMRT.
- 2.) Exploration locations determined in the field by taped measurements from existing site features.



PLANTING BED

280 FORE STREET
0.48 ACRES
F.F.E. = 11.0'
36 PARKING SPACES

HILTON GARDEN INN
F.F.E. = 13.10

SAN. DROP MH
RIM=12.9
INV. IN=7.00
INV. OUT=4.00

B-104
INV. OUT=8.0
8" SAN.
L=8'
S=0.125

EXIST. CB
RIM=11.73
INV. IN=7.43
INV. OUT=6.87

EXIST. CB
RIM=12.21
INV.=8.51

EXIST. CB
RIM=11.64
INV. IN=7.98
INV. OUT=7.84

EXIST. CB
RIM=16.51

EXIST. CB
RIM=14.87

MH
96

EXIST. SMH
=20.29

EXIST. CB
RIM=19.40

EXIST. CB
RIM=20.24

DOMESTIC MAIN
FIRE MAIN

STORMWATER
QUALITY (H.N.)
UNIT, SEE DETAIL
THIS SHEET

(2) 4" CONDUITS

48" RCP

54" RCP

12" SD

18" RCP

24'-0"

24'-0"

24'-0"

24'-0"

9'-0"

19'-0"

CMP-35 1/2

CMP-36

CMP-36S

TC135
BC130

TC144
BC139

TC133
BC128

F.F.E. 13.5

4"W

6"W

13.1

13.1

13.1

13.05

13.1

13.1

13.1

13.1

13.1

13.1

13.1

13.1

13.1

13.1

13.1

13.1

13.1

13.1

13.1

13.1

13.1

13.1

13.1

13.1

13.1

13.1

13.1

13.1

13.1

13.1

13.1

13.1

13.1

13.1

13.1

13.1

13.1

13.1

13.1

13.1