

**NOTES:**

1. CHANGE IN FLOOR MATERIAL OR PATTERN OCCURS UNDER CENTERLINE OF DOOR.
2. EACH PATTERN/AREA OF VCT SHALL BE ENTERED WITHIN THE DEFINING PERIMETER OF THAT PATTERN (WALLS, PATTERN CHANGE, ETC.) U.O.N.
3. AT CHANGE IN FLOORING MATERIAL PROVIDE TRANSITION STRIP TYPICAL U.O.N.

REV.	ISSUED FOR PERMIT/CONTRACT	DESCRIPTION	DATE
0	6-11-04		

**ISSUED FOR PERMIT/CONTRACT**  
6-11-04

CURRENT ISSUE STATUS:



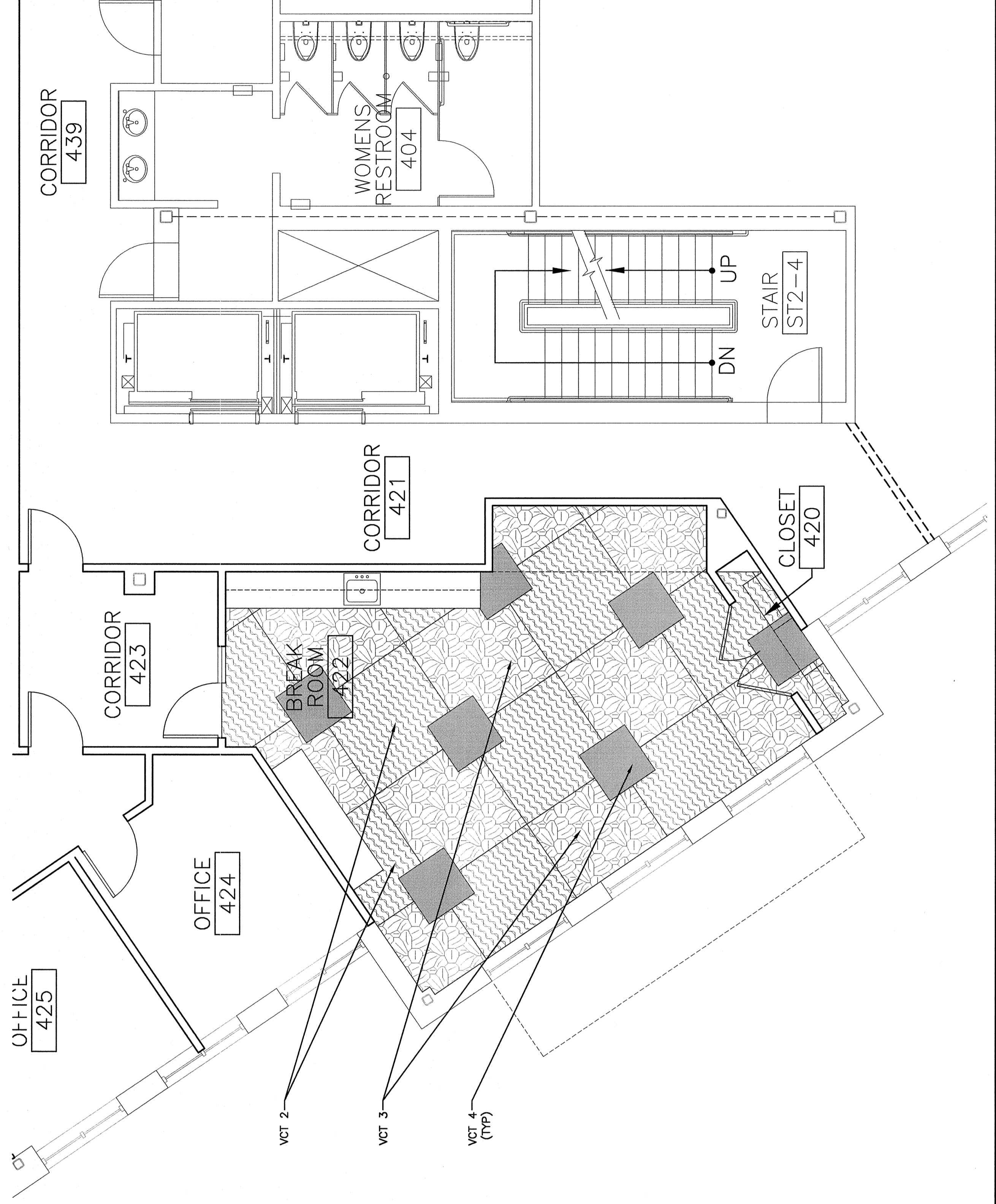
**SM RT**  
ARCHITECTURE ENGINEERING PLANNING  
144 Fore Street P.O. Box 618  
Portland, Maine 04104  
tel. (207) 772-3846  
fax. (207) 772-1070

**BAKER NEWMAN NOYES**  
FIT-UP  
PORTLAND, MAINE

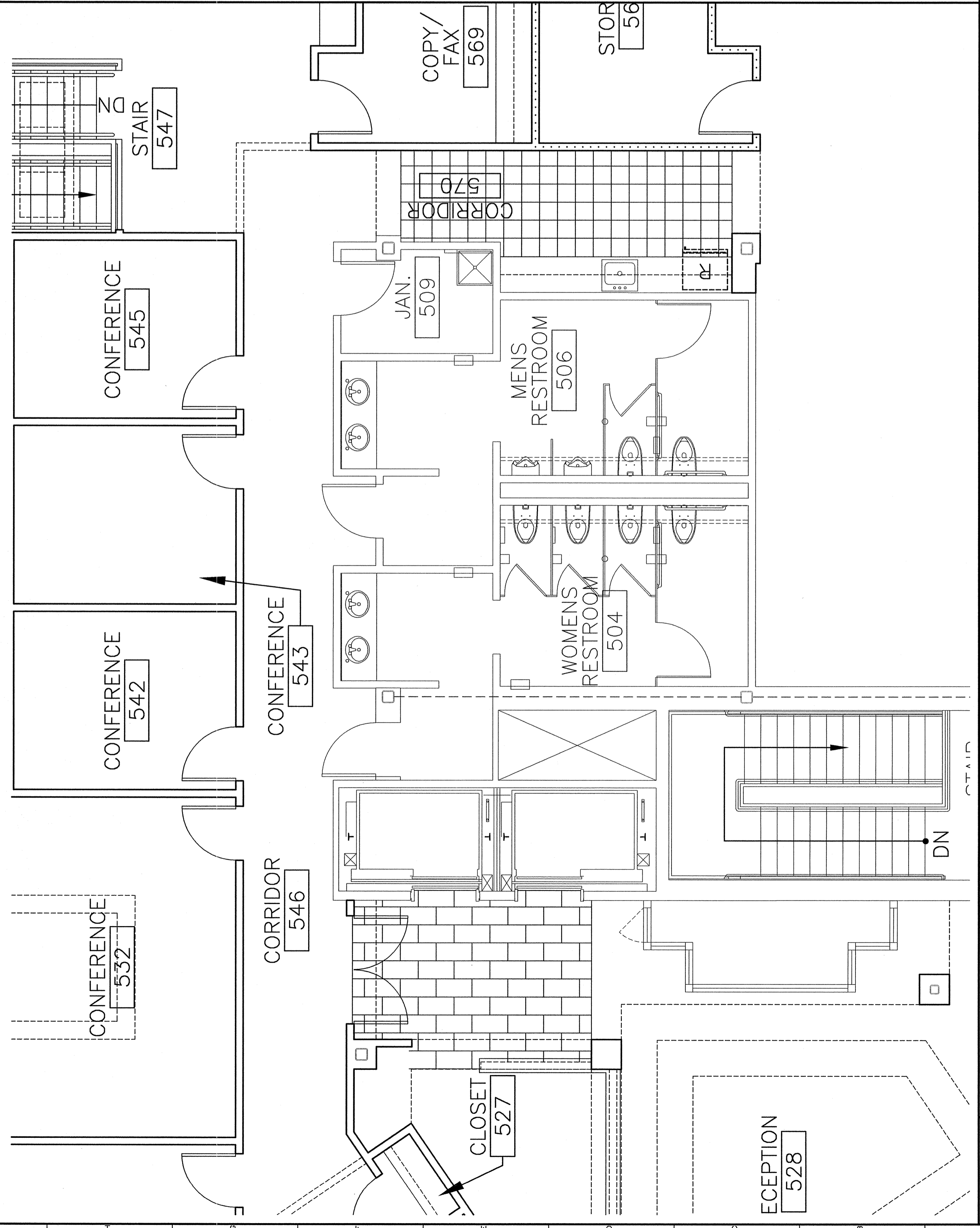
PROJECT:  
**FOURTH & FIFTH FLOOR FINISH PLANS**

SHEET TITLE: 1/4" = 1'-0" DATE: 6-11-04  
SCALE: 1/4" = 1'-0" GRAPHIC SCALE: 0' 1'

PROJECT No. AF101  
JOB CAP/DESIGN: DJM  
DATE OF RECORD: JUL  
SMART CAD FILE: AF101-03137  
PROJECT No. 03137



**A9 FIFTH FLOOR FINISH PLAN**  
1/4" = 1'-0"



**A1 FOURTH FLOOR FINISH PLAN**  
1/4" = 1'-0"