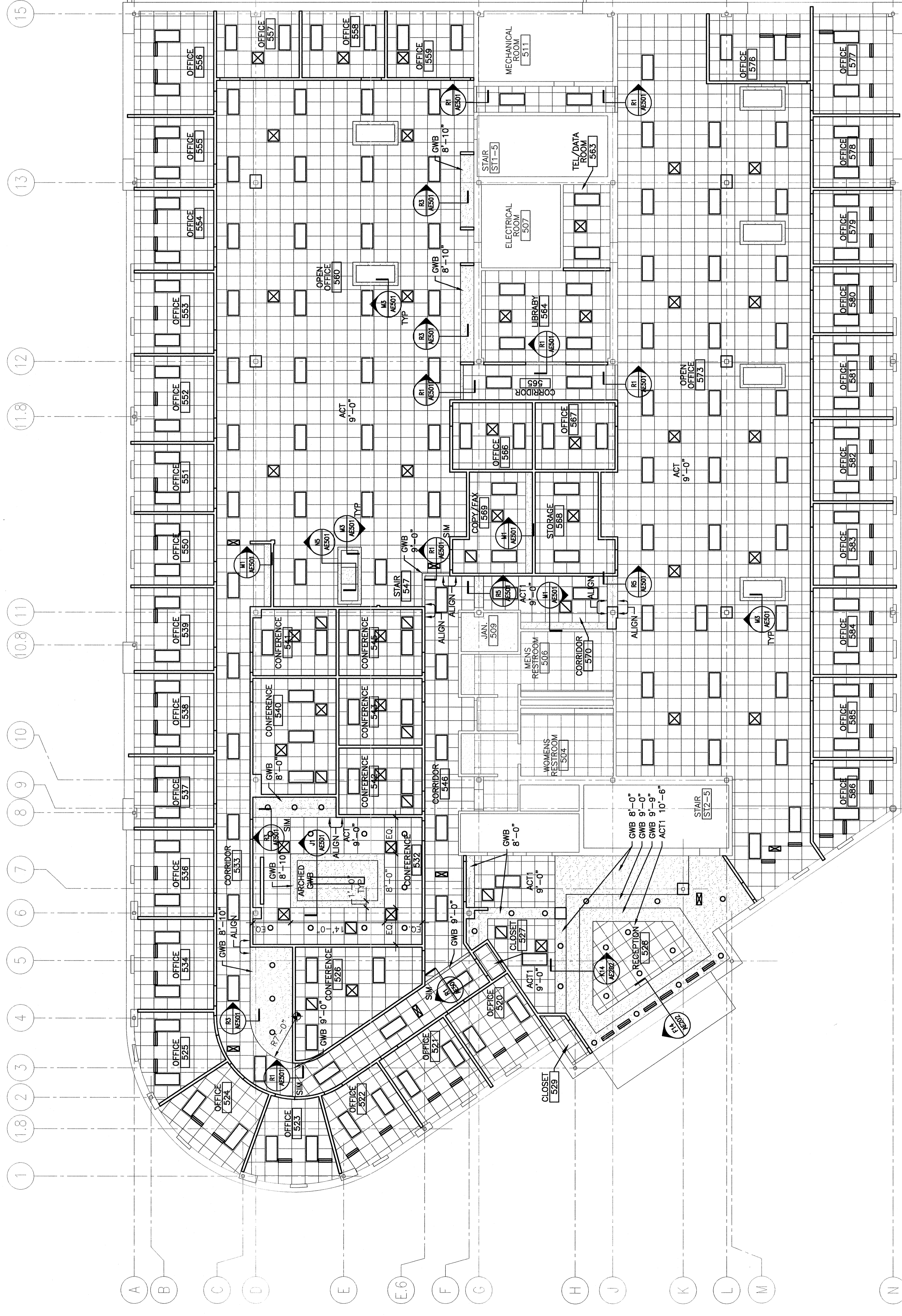


SYMBOL LEGEND

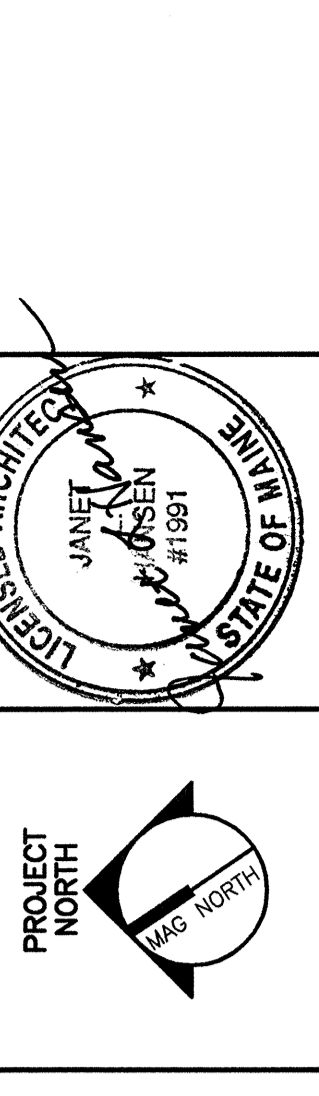
- 2x4 SUSPENDED CEILING PANEL AND GRID ASSEMBLY.
- GWB CEILING.
- 2x2 LAY-IN LIGHT FIXTURE.
- 2x4 LAY-IN LIGHT FIXTURE.
- 1x4 LIGHT FIXTURE.
- FLOURESCENT STRIP SIXTURE.
- DOWN LIGHT.
- CEILING MOUNTED EXIST LIGHT.
- RETURN AIR GRILLE.
- SUPPLY AIR GRILLE.
- SUPPLY AIR SLOT DIFFUSER.
- EXHAUST AIR GRILLE.
- SPRINKLER HEAD.
- CEILING MOUNTED SPEAKER.
- CEILING MOUNTED SMOKE DETECTOR.



REV.	ISSUED FOR PERMIT/CONTRACT	DATE
0		6-11-04

ISSUED FOR PERMIT/CONTRACT
6-11-04

CURRENT ISSUE STATUS:



SM RT
 ARCHITECTURE ENGINEERING PLANNING
 144 Fore Street/170 O. Box 418
 Portland, Maine 04104
 tel. (207) 772-3846
 fax. (207) 772-1070

BAKER NEWMAN NOYES
 FIT-UP
 PORTLAND, MAINE

PROJECT:
FIFTH FLOOR REFLECTED CEILING PLAN

SHEET TITLE:
 REFLECTED CEILING PLAN

SHEET No. **AE104**

PROJECT No. 03137

A1 FIFTH FLOOR REFLECTED CEILING PLAN

1/8" = 1'-0"