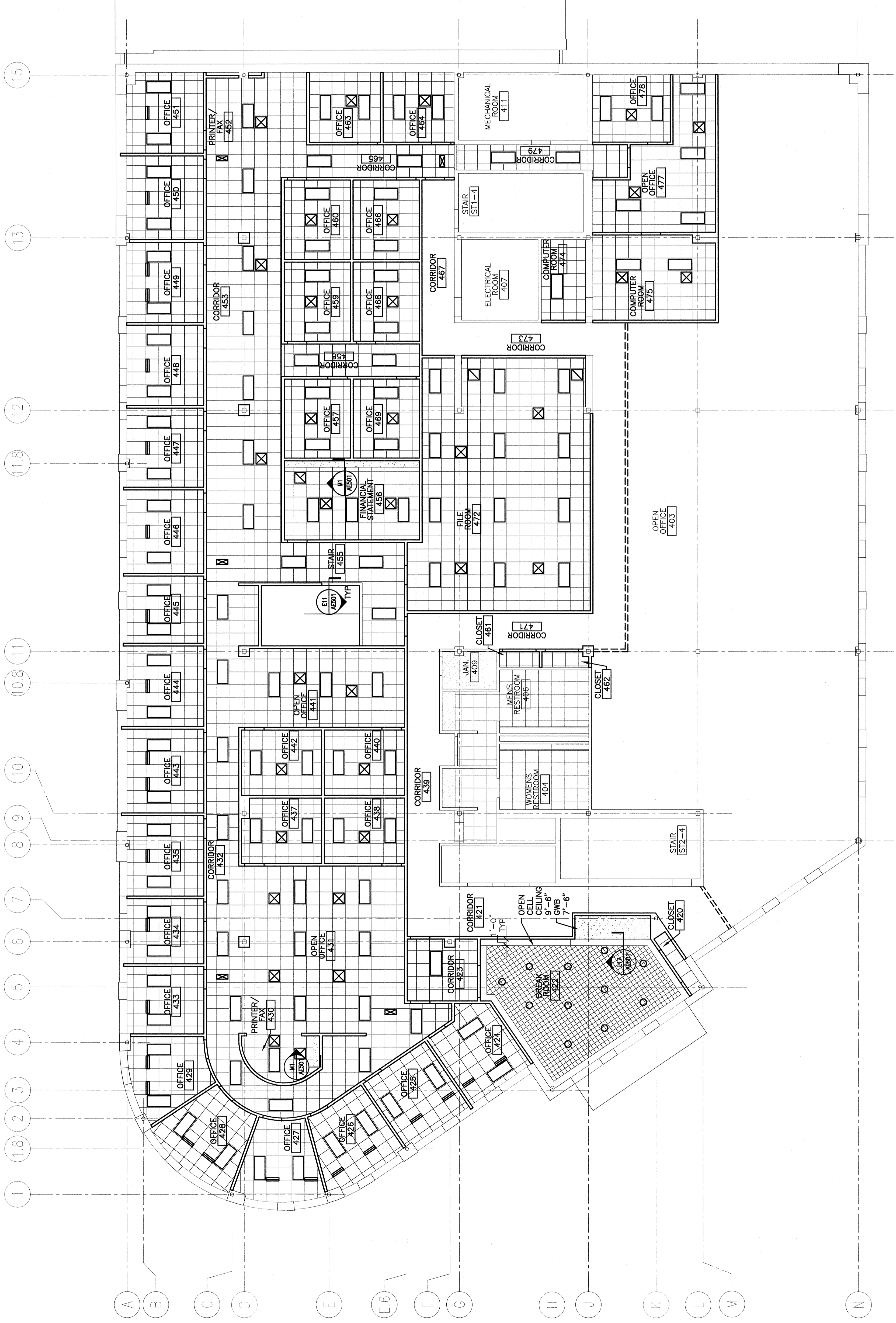


SYMBOL LEGEND

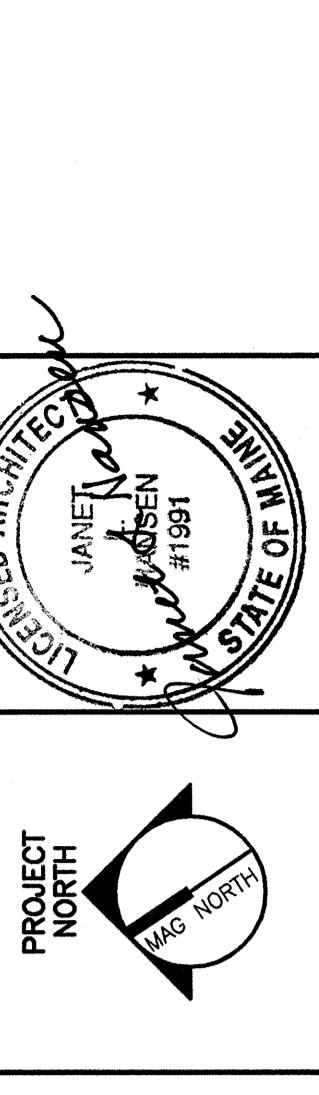
- 2x4 SUSPENDED CEILING PANEL AND GRID ASSEMBLY.
- GWB CEILING.
- 2x2 LAY-IN LIGHT FIXTURE.
- 2x4 LAY-IN LIGHT FIXTURE.
- 1x4 LIGHT FIXTURE.
- FLOURESCENT STRIP SIKTURE.
- DOWN LIGHT.
- CEILING MOUNTED EXIST LIGHT.
- RETURN AIR GRILLE.
- SUPPLY AIR GRILLE.
- SUPPLY AIR SLOT DIFFUSER.
- EXHAUST AIR GRILLE.
- SPRINKLER HEAD.
- CEILING MOUNTED SPEAKER.
- CEILING MOUNTED SMOKE DETECTOR.



REV.	ISSUED FOR PERMIT/CONTRACT	DATE
0	ISSUED FOR PERMIT/CONTRACT	6-11-04

ISSUED FOR PERMIT/CONTRACT
6-11-04

CURRENT ISSUE STATUS:



SM RT
 ARCHITECTURE ENGINEERING PLANNING
 144 Fore Street/P.O. Box 618
 Portland, Maine 04104
 tel. (207) 772-3846
 fax. (207) 772-1070

BAKER NEWMAN NOYES
 FIT-UP
 PORTLAND, MAINE

PROJECT:
FOURTH FLOOR REFLECTED CEILING PLAN

SHEET TITLE:
 SHEET NO. 6-11-04

PROJECT NO. AE103

DATE: 6-11-04
 GRAPHIC SCALE: 0"
 PROJECT MANAGER: JLN
 JOB CAP/DRAWN: DJM
 A/E OF RECORD: JLN
 SMART CAD FILE: AE103-031.37
 PROJECT NO.: 03137

A1 FOURTH FLOOR REFLECTED CEILING PLAN

1/8" = 1'-0"