

Durand Mailman
Key Bank
85 Commercial Street
Portland, ME 04101

RE: Sign Approval

Dear Mr. Durand Mailman

I am writing to inform you, on behalf of Olympia Equity Investors IV, LLC, your new signs as outlined in attached plans have been approved. If new holes need to be drilled into the exterior of the building to accommodate the new signage hardware, the owner must be notified prior to any work commencing and all old holes need to be repaired. All work needs to be completed in compliance with state and local regulations. Prior to any work commencing, we need to have proof of insurance for all contractors listing the property owner as a certificate holder.

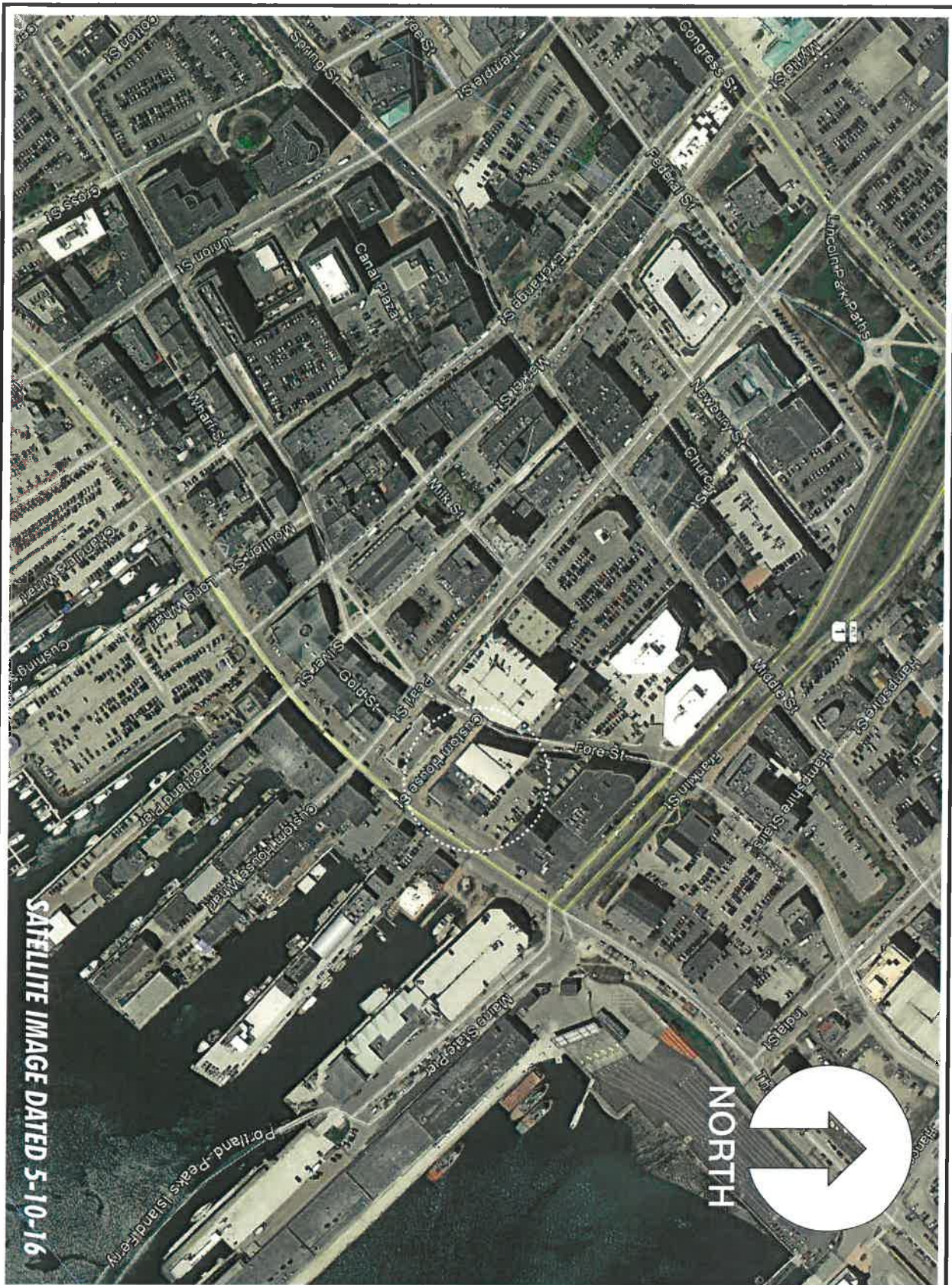
Olympia Equity Investor IV, LLC
c/o Boulos Asset Management
One Canal Plaza, Suite 500
Portland, Maine 04101

If you need anything further from me, please do not hesitate to contact me.

Regards,



Brian Brooks
Boulos Asset Management



NOTE: due to printer limitations, colors shown may not exactly match specified. Refer to material charts for true colors.

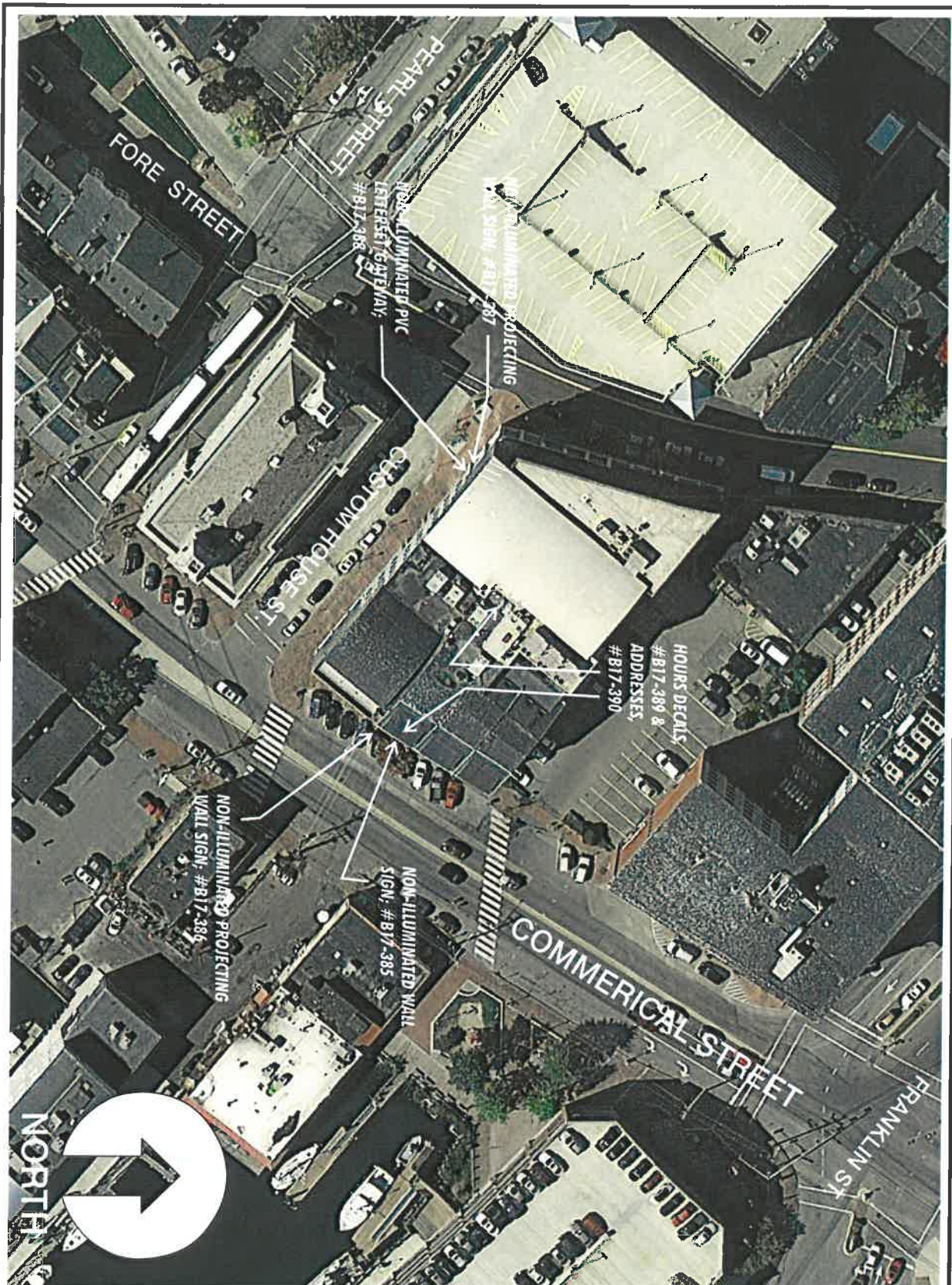


Brilliant Electric Sign Co., Ltd.

4811 VAN EPPS RD., CLEVELAND, OHIO 44131 (216)741-3800

NOTE: THIS IS AN ORIGINAL UNPUBLISHED DRAWING, CREATED BY BRILLIANT SIGNS. IT IS SUBMITTED FOR YOUR PERSONAL USE, IN CONJUNCTION WITH A PROJECT BEING PLANNED FOR YOU. IT IS NOT TO BE USED, REPRODUCED, COPIED OR EXHIBITED IN ANY FASHION.

COMPANY NAME KeyBank	SALESMAN H	DATE 2-7-17	REVISION	DESIGN NO. B17-383
LOCATION 85 Commercial Street, Portland, Maine	DESIGNER DM	SCALE NTS		COPYRIGHT © 2017
			FILE NAME I:/key 2017 CUIs/85 commercial	

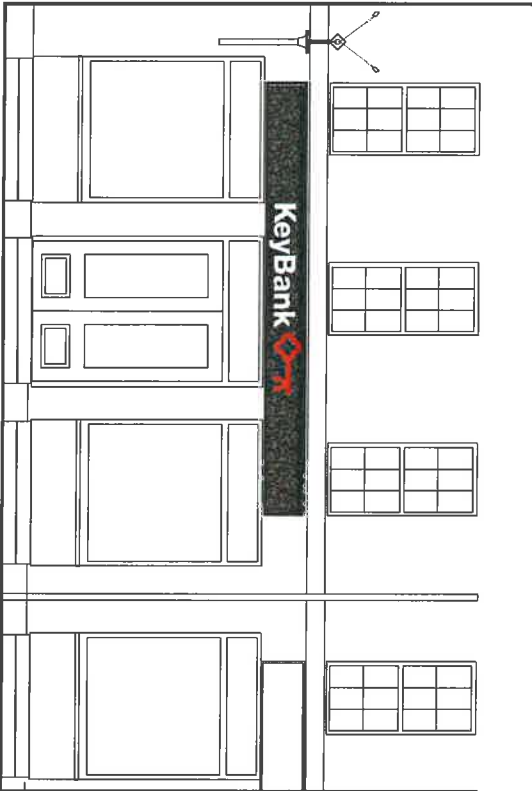
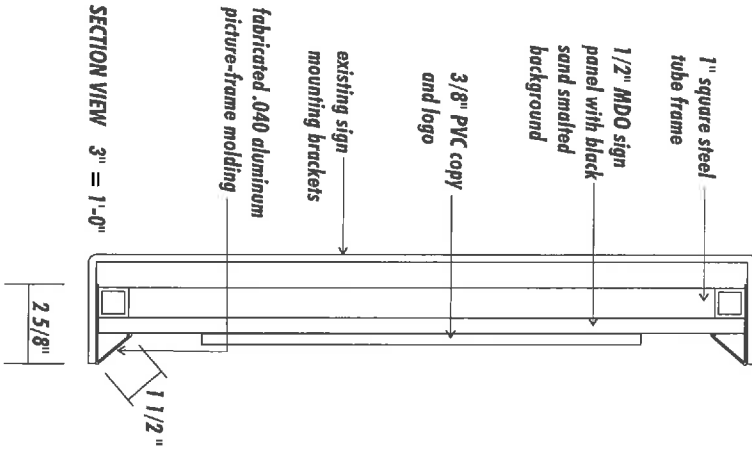
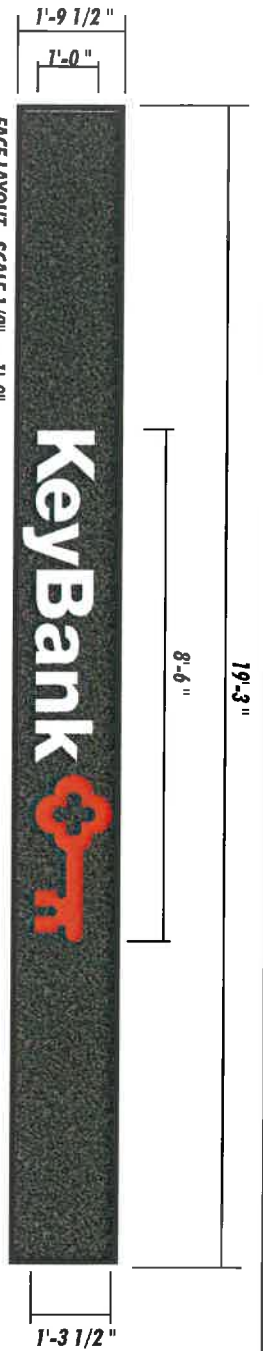


NOTE: due to printer limitations, colors shown may not exactly match specified. Refer to material charts for true colors.

RES CO **Brilliant Electric Sign Co., Ltd.**
 4811 VAN EPPS RD., CLEVELAND, OHIO 44131 (216)741-3800

NOTE: THIS IS AN ORIGINAL UNPUBLISHED DRAWING, CREATED BY BRILLIANT SIGNS. IT IS SUBMITTED FOR YOUR PERSONAL USE, IN CONJUNCTION WITH A PROJECT BEING PLANNED FOR YOU. IT IS NOT TO BE USED, REPRODUCED, COPIED OR EXHIBITED IN ANY FASHION.

COMPANY NAME KeyBank	SALESMAN H	DATE 2-7-17	REVISION	DESIGN NO. B17-384
LOCATION 85 Commercial Street, Portland, Maine	DESIGNER DM	SCALE NTS		COPYRIGHT © 2017
			FILE NAME	l:/key 2017 CUIs/85 commercial



NOTES:
 Single-face, non-illuminated wall sign with picture-frame molding; sign to consist of 1/2" thick MDO sign panel with 3/8" PVC copy/logo and sanded background, with 1" square tube backing frame and fabricated aluminum picture-frame.
 Copy to be painted white. Logo to be painted red PMS # 1795C. Background to be black sand sanded finish.
 Aluminum picture frame to be painted matte black.
 Sign to be indirectly lit utilizing existing gooseneck floodlights.

NOTE: due to printer limitations, colors shown may not exactly match specified. Refer to material charts for true colors.

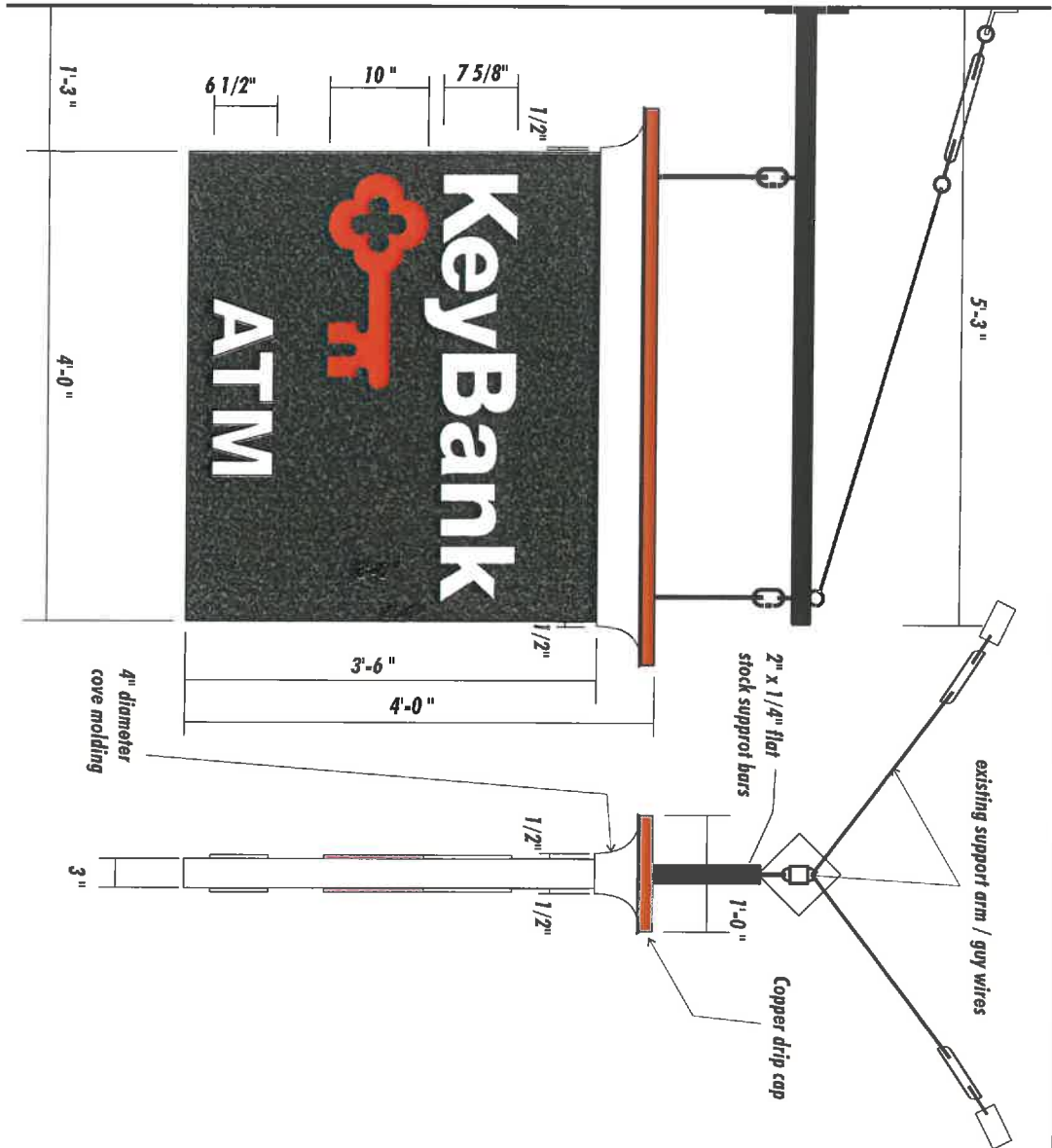


Brilliant Electric Sign Co., Ltd.

4811 VAN EPPS RD., CLEVELAND, OHIO 44131 (216)741-3800

NOTE: THIS IS AN ORIGINAL UNPUBLISHED DRAWING, CREATED BY BRILLIANT SIGNS. IT IS SUBMITTED FOR YOUR PERSONAL USE, IN CONJUNCTION WITH A PROJECT BEING PLANNED FOR YOU. IT IS NOT TO BE USED, REPRODUCED, COPIED OR EXHIBITED IN ANY FASHION.

COMPANY NAME KeyBank	SALESMAN H	DATE 2-7-17	REVISION	DESIGN NO. B17-385
LOCATION 85 Commercial Street, Portland, Maine	DESIGNER DM	SCALE 1/2" = 1'-0"		COPYRIGHT © 2017
			FILE NAME i:/key 2017 CUIs/85 commercial	



NOTES:
 Double-face, non-illuminated shingle-type sign, to suspend from existing support mast; sign to consist of 1/2" MDO sign panels with 3/8" PVC copy / logo, and smelted backgrounds, 4" diameter cove molding, and copper drip cap, all mounted on 1" square tube frame.
 Copy to be painted white.
 Logo to be painted red PMS # 1795C.
 Face backgrounds to be black sand smelted finish.
 Cove molding to be white.
 Edges of sign to be painted black.

NOTE: due to printer limitations, colors shown may not exactly match specified. Refer to material charts for true colors.

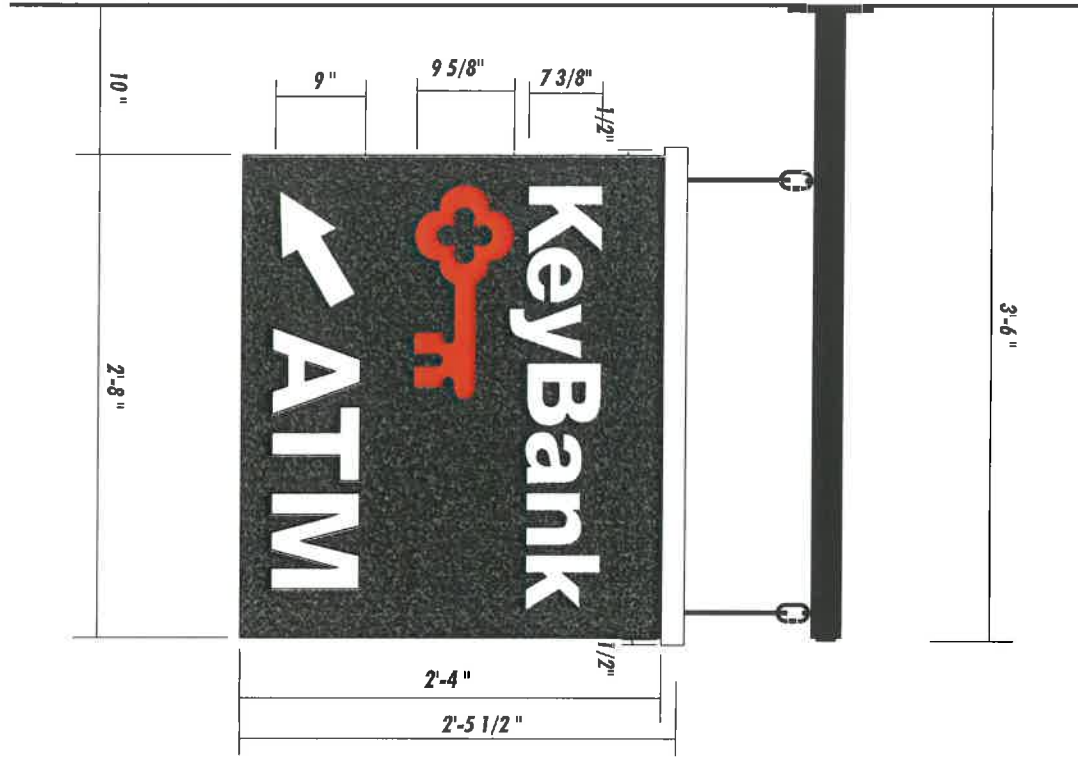


Brilliant Electric Sign Co., Ltd.

4811 VAN EPPS RD., CLEVELAND, OHIO 44131 (216)741-3800

NOTE: THIS IS AN ORIGINAL UNPUBLISHED DRAWING, CREATED BY BRILLIANT SIGNS. IT IS SUBMITTED FOR YOUR PERSONAL USE, IN CONJUNCTION WITH A PROJECT BEING PLANNED FOR YOU. IT IS NOT TO BE USED, REPRODUCED, COPIED OR EXHIBITED IN ANY FASHION.

COMPANY NAME	KeyBank	SALESMAN	H	DATE	2-7-17	REVISION		DESIGN NO.	B17-386
LOCATION	85 Commercial Street, Portland, Maine	DESIGNER	DM	SCALE	1" = 1'-0"			COPYRIGHT ©	2017
						FILE NAME	l:/key 2017 CUI/85 commercial		

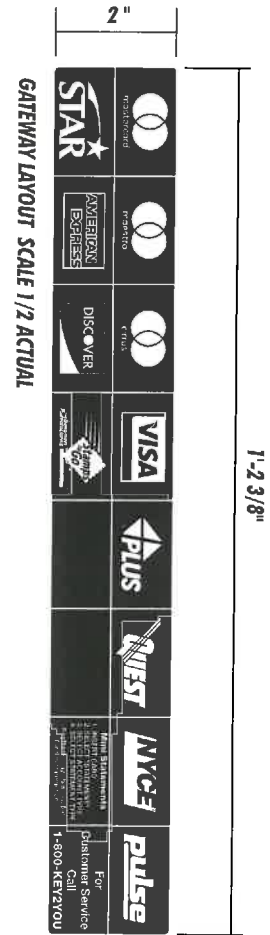
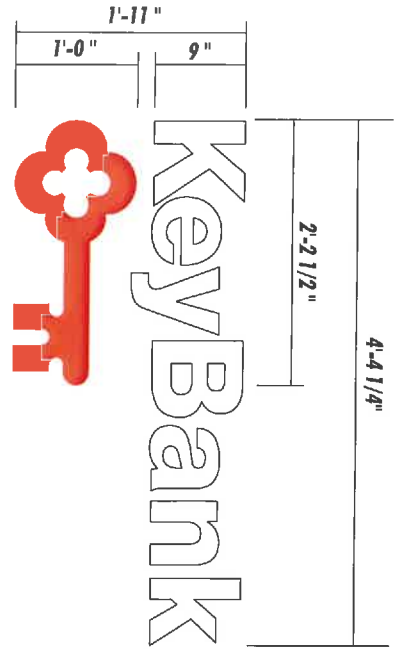


NOTES:
 Double-face, non-illuminated shingle-type sign, to suspend from existing support mast; sign to consist of 1/2" MDO sign panels with 3/8" PVC copy / logo, smalted backgrounds, and 1-1/2" x 3" rectangular tube top bar, 4" diameter cove molding, and copper drip cap, all mounted on 1" square tube frame.
 Copy to be painted white.
 Logo to be painted red PMS #1795C.
 Face backgrounds to be black sand smalted finish.
 Rectangular tube to be painted white.
 Edges of sign to be painted black.

NOTE: due to printer limitations, colors shown may not exactly match specified. Refer to material charts for true colors.

	<h2>Brilliant Electric Sign Co., Ltd.</h2>		<small>NOTE: THIS IS AN ORIGINAL UNPUBLISHED DRAWING, CREATED BY BRILLIANT SIGNS. IT IS SUBMITTED FOR YOUR PERSONAL USE, IN CONJUNCTION WITH A PROJECT BEING PLANNED FOR YOU. IT IS NOT TO BE USED, REPRODUCED, COPIED OR EXHIBITED IN ANY FASHION.</small>	
	4811 VAN EPPS RD., CLEVELAND, OHIO 44131 (216)741-3800			

COMPANY NAME KeyBank	SALESMAN H	DATE 2-7-17	REVISION	DESIGN NO. B17-387
LOCATION 85 Commercial Street, Portland, Maine	DESIGNER DM	SCALE 1-1/2" = 1'-0"		COPYRIGHT © 2017
			FILE NAME	l:/key 2017 CUIs/85 commercial



NOTES:
 A - Individual, non-illuminated, flat cut out 3/8" PVC, to mount to existing surround.
 Copy to be painted white.
 Logo to be painted red PMS # 1795C.
 B - One (1) single-face network gateway, consisting of printed vinyl applied to aluminum.
 All copy, logos and lines to be white on black background.

NOTE: due to printer limitations, colors shown may not exactly match specified. Refer to material charts for true colors.

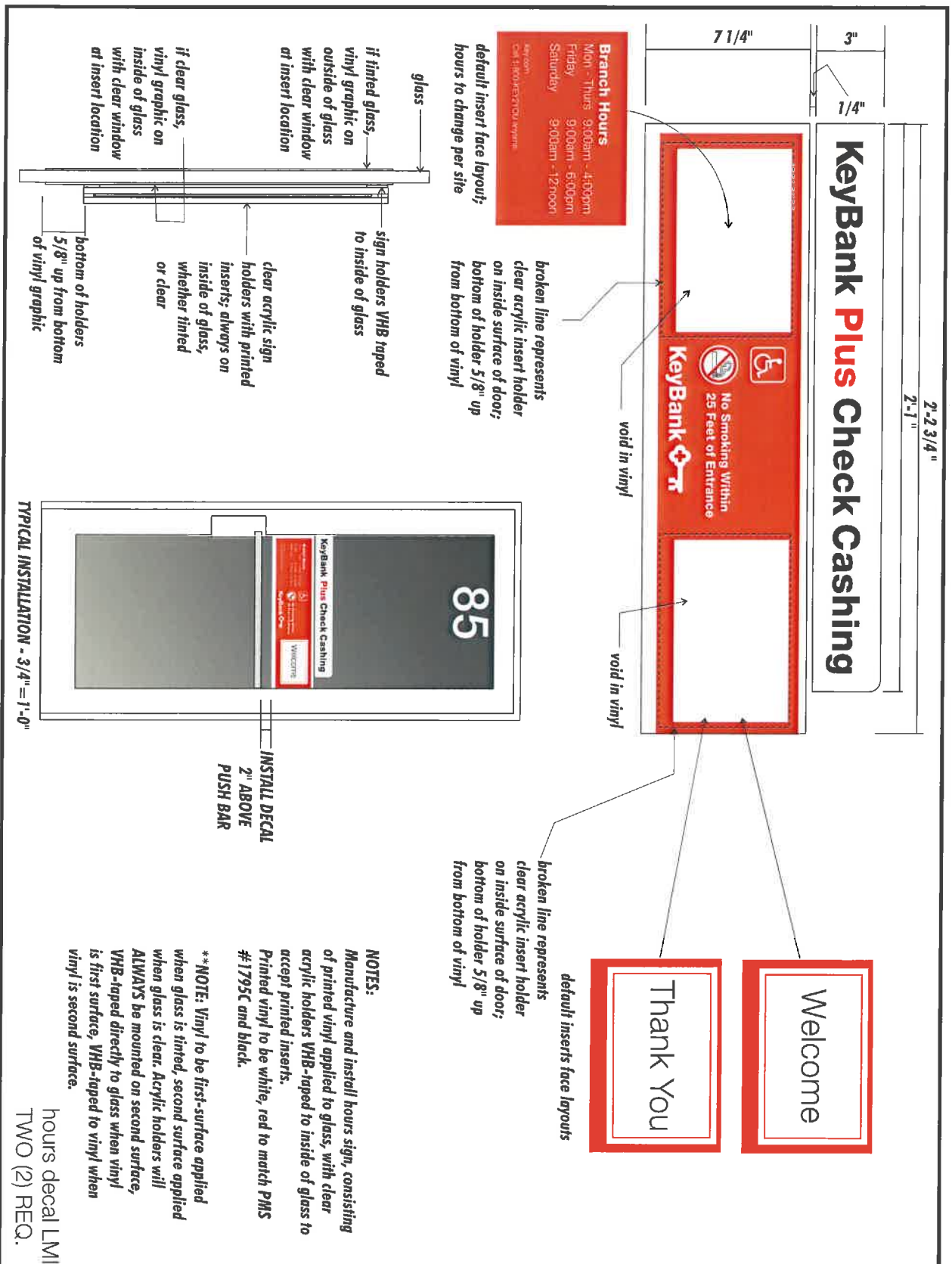


Brilliant Electric Sign Co., Ltd.

4811 VAN EPPS RD., CLEVELAND, OHIO 44131 (216)741-3800

NOTE: THIS IS AN ORIGINAL UNPUBLISHED DRAWING, CREATED BY BRILLIANT SIGNS. IT IS SUBMITTED FOR YOUR PERSONAL USE, IN CONJUNCTION WITH A PROJECT BEING PLANNED FOR YOU. IT IS NOT TO BE USED, REPRODUCED, COPIED OR EXHIBITED IN ANY FASHION.

COMPANY NAME KeyBank	SALESMAN H	DATE 2-7-17	REVISION	DESIGN NO. B17-388
LOCATION 85 Commercial Street, Portland, Maine	DESIGNER DM	SCALE 1" = 1'-0"		COPYRIGHT © 2017
FILE NAME			I:/key 2017 CUIs/85 commercial	



NOTE: due to printer limitations, colors shown may not exactly match specified. Refer to material charts for true colors.

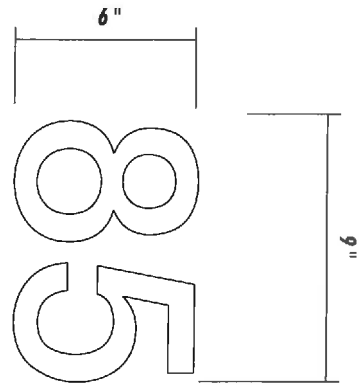
Brilliant Electric Sign Co., Ltd.

4811 VAN EPPS RD., CLEVELAND, OHIO 44131 (216)741-3800

NOTE: THIS IS AN ORIGINAL UNPUBLISHED DRAWING. CREATED BY BRILLIANT SIGNS. IT IS SUBMITTED FOR YOUR PERSONAL USE, IN CONJUNCTION WITH A PROJECT BEING PLANNED FOR YOU. IT IS NOT TO BE USED, REPRODUCED, COPIED OR EXHIBITED IN ANY FASHION.

COMPANY NAME KeyBank	SALESMAN H	DATE 2-7-17	REVISION	DESIGN NO. B17-389
LOCATION 85 Commercial Street, Portland, Maine	DESIGNER DM	SCALE 3" = 1'-0"		COPYRIGHT © 2017
			FILE NAME I:/key 2017 CUI/85 commercial	

hours decal LMI TWO (2) REQ.



TYPICAL INSTALLATION - 3/4" = 1'-0"

NOTES:
 TWO (2) SETS - REVERSE-CUT VINYL,
 FOR SECOND-SURFACE APPLICATION
 TO DOOR GLASS.
 VINYL TO BE 3M WHITE.

address vinyl/
 two (2) req.

NOTE: due to printer limitations, colors shown may not exactly match specified. Refer to material charts for true colors.



Brilliant Electric Sign Co., Ltd.

4811 VAN EPPS RD., CLEVELAND, OHIO 44131 (216)741-3800

NOTE: THIS IS AN ORIGINAL UNPUBLISHED DRAWING, CREATED BY BRILLIANT SIGNS. IT IS SUBMITTED FOR YOUR PERSONAL USE, IN CONJUNCTION WITH A PROJECT BEING PLANNED FOR YOU. IT IS NOT TO BE USED, REPRODUCED, COPIED OR EXHIBITED IN ANY FASHION.

COMPANY NAME KeyBank	SALESMAN H	DATE 2-7-17	REVISION	DESIGN NO. B17-390
LOCATION 85 Commercial Street, Portland, Maine	DESIGNER DM	SCALE 3" = 1'-0"		COPYRIGHT © 2017
			FILE NAME i:/key 2017 CUIs/85 commercial	