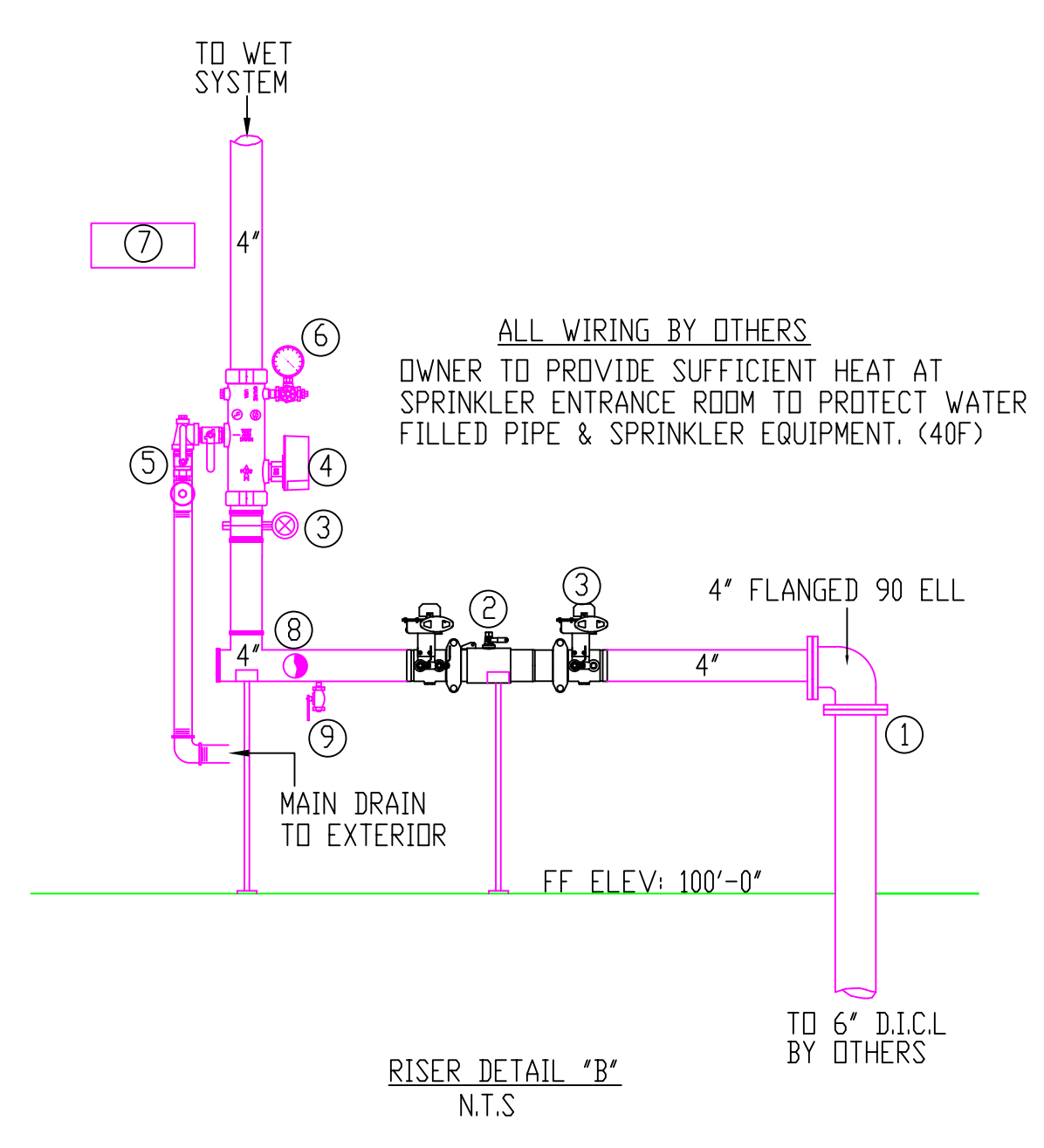
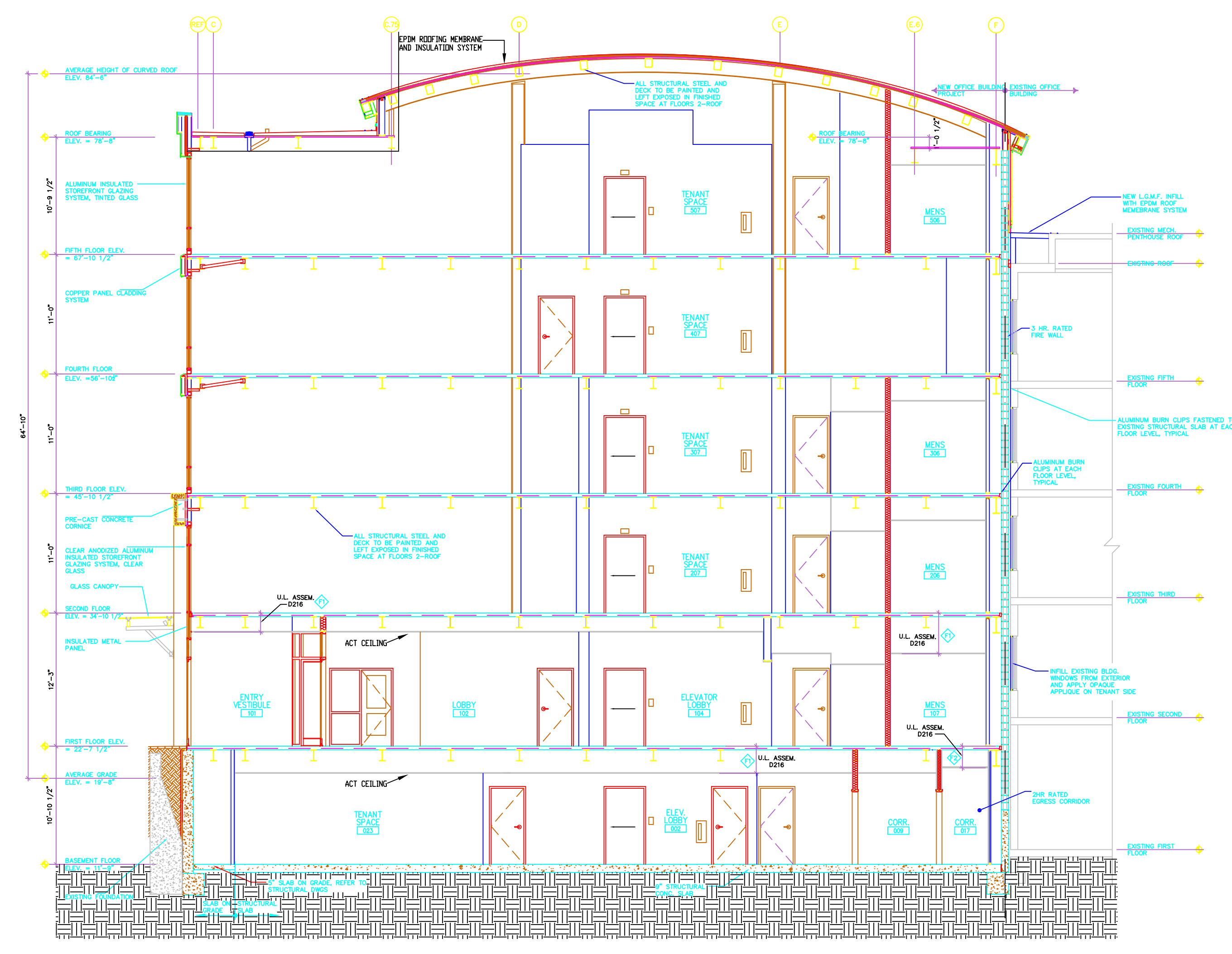


SECOND FLOOR
 FINISH FLOOR ELEVATION: 123'-1 1/2"
 AREA PROTECTED: 10,827 SQ. FT.
 COLOR CODE: WHITE

VICTAULIC MODEL "V2704" OR BRASS UPRIGHTS	VICTAULIC MODEL "V2704" OR BRASS UPRIGHTS ON SPRIG-UPS	VICTAULIC MODEL "V3802" WHITE CONCEALED PENDENT
(155 1)	(155 67)	(155 4)
K-FACTOR = 5.6 SIN # "V2704" SYMBOL = ○	K-FACTOR = 5.6 SIN # "V2704" SYMBOL = ●	K-FACTOR = 5.6 SIN # "V3802" SYMBOL = ✖



- RISER LEGEND**
- ① UNI-FLANGE (BY OTHERS)
 - ② 4" AMES MODEL 200BFG COLT BACKFLOW PREVENTER
 - ③ BUTTERFLY CONTROL VALVES (WITH TAMPER SWITCH'S)
 - ④ POTTER VS-R-F VANE TYPE FLOW SWITCH
 - ⑤ TEST & DRAIN VALVE
 - ⑥ WATER PRESSURE GAUGE
 - ⑦ 12 COUNT SPARE HEAD BOX WITH WRENCH
 - ⑧ OUTLET FOR FIRE DEPARTMENT CONNECTION
 - ⑨ AUXILIARY DRAIN
 - ⑩ 4" STORZ FIRE DEPARTMENT CONNECTION (SEE FIRST FLOOR PLAN)
 - ⑪ MAIN DRAIN EXTERIOR DISCHARGE (SEE FIRST FLOOR PLAN)
 - ⑫ 6" ELECTRIC BELL (SEE FIRST FLOOR PLAN)



AS-BUILT DRAWING
 SEPTEMBER 17, 2007

DENALI
 FIRE PROTECTION, INC.
 DESIGN INSTALLATION SERVICE
 270 TIGER HILL RD.
 OXFORD, MAINE 04270
 (207) 539-4226 FAX (207) 539-8544

- General Notes**
- All Pipe Locations are to be Field Measured Prior to Fabrication and Installation by Sprinkler Contractor.
 - All Dimensions Shown are Center to Center.
 - High Temperature Heads are to be Field Located Where Required.
 - All Pipes and Hangers are to be Installed per NFPA #13.
 - Hangers are to be U.L. Listed and F.M. Approved.

Symbols		Number of Sprinklers	
Symbol	Description	Total This Sheet	Total This Job
○	Hydraulic Reference Points		
[+]	Elev. Below Top of Steel		
[+]	Elev. Above Finished Floor		
+ 018 - 20 - 0	Elev. of Top of Steel		
⊕	Ceiling Height		
⊕	Denotes Hanger Location		
o	Rise up or down		

Drawing Title		NPPA 13 SYSTEM	
Contract No.	C18-06	Revisions	Date
Drawn By	CKD	REVISIONS	02/05/07
Scale	1/8"=1'-0"		
Date	11/29/06		
Approval By	SPM/PFD		

Job:
 CUSTOM HOUSE SQUARE OFFICE BLDG
 300 FORE STREET
 PORTLAND, MAINE

Contractor:
 DENALI FIRE PROTECTION INC.
 270 TIGER HILL ROAD
 OXFORD, MAINE 04270

SHEET 3 OF 6