

SYMBOL	DESCRIPTION	ABBREVIATION
	SANITARY BELOW GRADE	S
	COLD WATER BELOW GRADE	CW
	SOIL, WASTE OR SANITARY	S, W, SAN
	VENT PIPING	V
	COLD WATER PIPING	CW
	HOT WATER PIPING 120°	HW
	HOT WATER PIPING 140°	HW
	HOT WATER RETURN PIPING	HWR
	GAS PIPING	G
	PIPE TURNING DOWN	DN
	PIPE TURNING UP	UP
	CLEANOUT	CO
	FLOOR, GROUND CLEANOUT	FOO,GCO
	BALL VALVE	
	GATE VALVE	
	GLOBE VALVE	
	PLUG VALVE	
	CHECK VALVE	
	PRESSURE REDUCING VALVE (PRV)	
	STRAINER	
	UNION	
	GAS METER	M
	RELIEF VALVE	
	VACUUM BREAKER	VB
	WATER METER	M
	CONNECT TO EXISTING	
	FLOOR CLEANOUT	FCO
	FLOOR DRAIN	FD
	FLOOR SINK	FS
	GALLONS PER HOUR	GPH
	GREASE INTERCEPTOR	GI
	GROUND CLEANOUT	GCO
	HOSE BIBB	HB
	HOT WATER SUPPLY (HWS 140°)	HWS 140°
	HOT WATER SUPPLY (HWS 120°)	HWS 120°
	INDIRECT WASTE	IW
	MECHANICAL	MECH
	UNDERGROUND	UG
	VACUUM BREAKER	VB
	VENT THRU ROOF	VTR
	WATER CLOSET	WC
	WALL CLEANOUT	WCO
	WATER HYDRANT	WH
	WATER HEATER	WTR, HTR

NOTE:  
ALL OF THE SYMBOLS AND ABBREVIATIONS INCLUDED ON THIS SHEET MAY OR MAY NOT BE USED IN THIS SET OF DRAWINGS.

### PLUMBING FIXTURE SCHEDULE

FIXTURE	PIPE SIZE				FURNISHED BY	REMARKS
	W	V	CW	HW		
P-1 HANDICAP WATER CLOSET	4"	2"	3/4"	-	X	AMERICAN STANDARD CRODET MD# 2998-012 ELONGATED TANK TYPE TOILET 16.5" H. CHURCH #299C ELONGATED OPEN FRONTLESS COVER SEAT, SUPPLY & STOP TO SUIT. WHITE
P-2 WATER CLOSET	4"	2"	3/4"	-	X	AMERICAN STANDARD CRODET MD# 2998-012 ELONGATED TANK TYPE TOILET 15" H. CHURCH #299C ELONGATED OPEN FRONTLESS COVER SEAT, SUPPLY & STOP TO SUIT. WHITE
P-3 HANDICAP WATER CLOSET	4"	2"	1/2"	-	X	AMERICAN STANDARD CRODET MD# 2998-012 ELONGATED TANK TYPE TOILET 16.5" H. CHURCH #299C ELONGATED OPEN FRONTLESS COVER SEAT, SUPPLY & STOP TO SUIT. WHITE
P-4 URINAL	2"	1-1/2"	3/4"	-	X	AMERICAN STANDARD MAYBROOK MD# 6581-015 WALL HUNG URINAL, SLOAN 186-1 FLUSH VALVE, WHITE
P-5 COUNTER LAV	1-1/2"	1-1/4"	1/2"	1/2"	-	AMERICAN STANDARD 0476-028 DROP IN LAV, 4" H. MOEN L4635 SINGLE HANDLE FAUCET, GRID DRAIN, SUPPLIES & STOPS, TRUBRO 102EZ DRAIN COVER, WHITE
P-6 WALL HUNG LAV	1-1/2"	1-1/4"	1/2"	1/2"	-	AMERICAN STANDARD LUCERNE MD# 0355-012 WALL HUNG LAV MTD 34" A.F.F., MOEN L4635 SINGLE HANDLE FAUCET, GRID DRAIN, SUPPLIES & STOPS, TRUBRO 102EZ DRAIN COVER, WHITE
P-7 JAN. SINK	3"	1-1/2"	1/2"	1/2"	X	FLAT MD# MSB2424 MOLDED STONE 24X24 MOP BASIN, SFEAKMAN SC5811RCP FAUCET.
P-8 SHOWER	2"	1-1/2"	1/2"	1/2"	X	AKER MD# NS48 48"X36 3/4" NO SEAT ONE PIECE FIBERGLASS GELCOATED SHOWER
P-9 KITCHEN SINK	1-1/2"	1-1/4"	1/2"	1/2"	X	DAYTON MD# D12821 SINGLE BOWL SINK, MOEN MD# 7310 SINGLE HANDLE KITCHEN FAUCET WITH PROTEGE SIDE SPRAY, GRID DRAIN, SUPPLIES & STOPS
P-10 DRINKING FOUNTAIN	1-1/2"	1-1/4"	1/2"	-	X	ELKAY MD# E28 WATER COOLER, BARRIER FREE, SELF CLOSING EASY TOUCH CONTROLS, SUPPLIES & STOPS TO SUIT
P-11 HOSE BIBB	-	-	3/4"	-	X	PUREPRO MD# FPS-110 SILCOCK W/8 1/2"X10"
P-12 WALL HYDRANT	-	-	3/4"	-	X	ZURN MD# Z1310-14 WALL HYDRANT 3/4"X14"
P-13 FLOOR DRAIN	2"	2"	-	-	X	WATTS MD# FD100 S SERIES CAST IRON
P-14 ROOF DRAIN	4"	-	-	-	X	WATTS MD# RD100 S SERIES CAST IRON
P-15 WATER HEATER SA SHOCK ABSORBER	-	-	3/4"	3/4"	-	SMITH MD# 5005, HYDROTROL WATER HAMMER

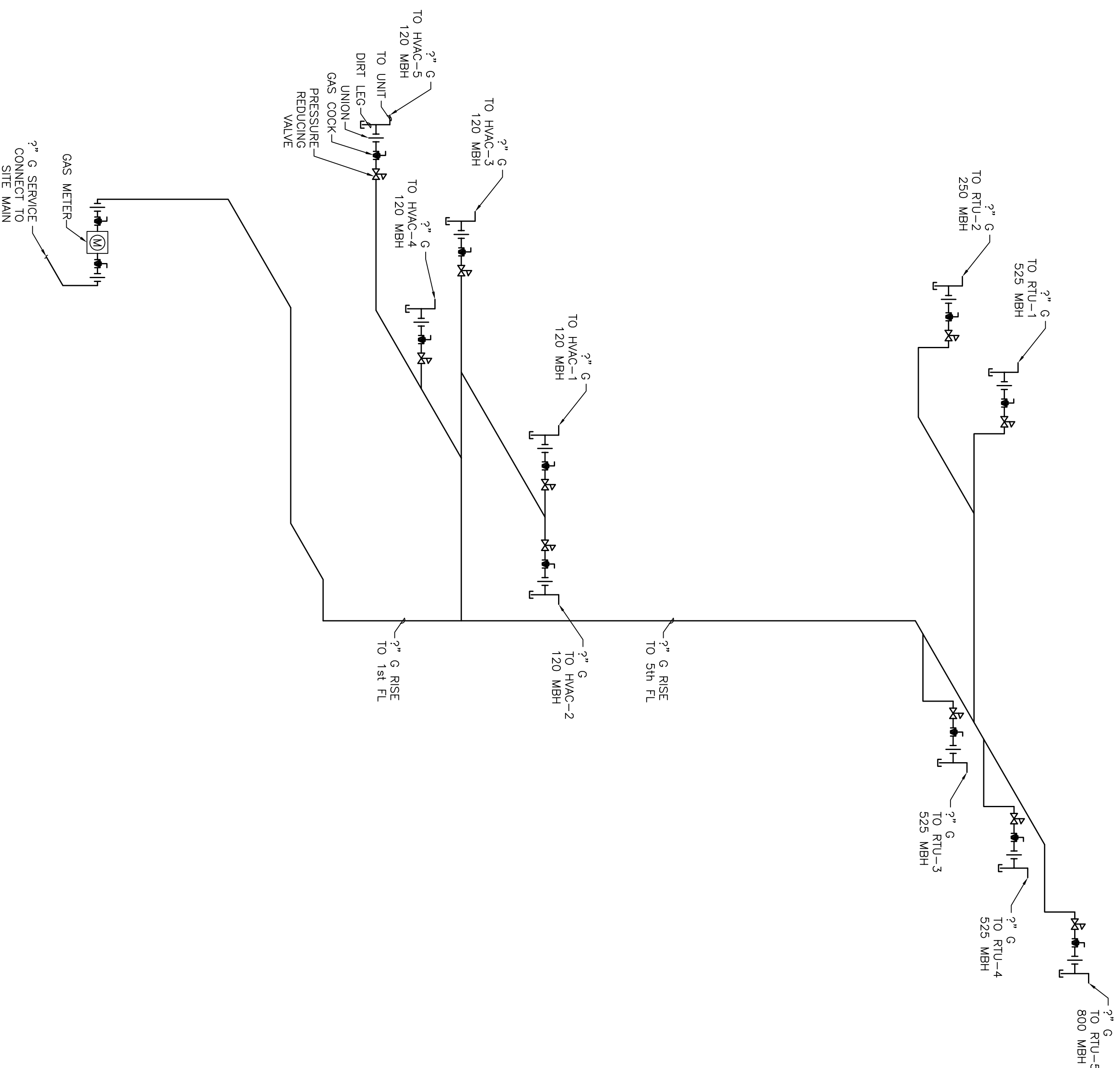
\* PROVIDE OFF-SET DRAIN FOR HANDICAP LAV WITH INSULATION COVERS.

### PLUMBING NOTES

- DRAWINGS ARE ONLY DIAGRAMATIC. IT IS NOT THE INTENT TO SHOW EVERY CONSTRUCTION DETAIL. EXACT DIMENSIONS AND FIXTURE LOCATIONS ARE TO BE FIELD MEASURED. EXACT LOCATION OF FLOOR DRAINS AND FLOOR CLEANOUTS TO BE FIELD DETERMINED.
- THE MECHANICAL CONTRACTOR SHALL SUPPLY ALL MATERIALS, LABOR, EQUIPMENT AND APPLIANCES REQUIRED TO INSTALL ALL PLUMBING WORK NECESSARY.
- ALL WORKMANSHIP AND MATERIALS SHALL BE GUARANTEED FOR A PERIOD OF NOT LESS THEN ONE YEAR FROM THE DATE OF ACCEPTANCE BY THE OWNER.
- CONTRACTOR TO OBTAIN ALL PERMITS FOR HIS WORK.
- CONTRACTOR TO SUBMIT INSURANCE CERTIFICATE PRIOR TO COMMENCEMENT OF ANY WORK.
- CONTRACTOR TO SUBMIT (6) SETS OF SHOP DRAWINGS OF EQUIPMENT AND MATERIALS FOR APPROVAL PRIOR TO PURCHASE AND INSTALLATION.
- CONTRACTOR TO PROVIDE (3) O&M MANUALS AT COMPLETION OF PROJECT (1) SET TO BE RETAINED BY THE ENGINEER AND (2) SETS TO OWNER.
- CONTRACTOR TO SUBMIT AS-BUILT DRAWINGS AT COMPLETION OF PROJECT IN REPRODUCIBLE MEDIA.
- ALL WORK SHALL BE DONE IN ACCORDANCE WITH THE IBC PLUMBING CODE AND ANY LOCAL APPLICABLE CODE REQUIREMENTS.
- WATER LINES SHALL BE TYPE "L" COPPER IN BUILDING; TYPE "X" FOR UNDERGROUND. PROVIDE CHROME STOP VALVE ON CW/HW CONNECTIONS AT EACH FIXTURE.
- HW & CW PIPING SHALL BE INSULATED WITH 1" FIBERGLASS INSULATION WITH VAPOR BARRIER JACKET. IDENTIFY PIPING WITH LABELS AND FLOW DIRECTIONAL ARROWS.
- SANITARY WASTE & VENT SHALL BE CAST IRON SERVICE WEIGHT IN BUILDING, HEAVY WEIGHT UNDERGROUND WITH GASKET JOINT. PVC MAY BE USED IF ACCEPTABLE TO THE LOCAL BUILDING INSPECTOR AND OWNER.
- WASTE PIPING EXPOSED CONDITION SHALL BE CHROME FINISH.
- PROVIDE PROTECTIVE COVERING ON WATER AND WASTE AT HANDICAPPED LAVATORIES.
- PROVIDE CHROME ESCUTCHEONS TO NEATLY COVER WALL PENETRATIONS FOR CW, HW, AND WASTE PIPING UNDER COUNTERS AND IN EXPOSED LOCATIONS.
- GAS PIPING SHALL BE BLACK STEEL, SCH. 40 WITH MALLEABLE CAST IRON FITTINGS. PAINT PIPING YELLOW IN ALL MECHANICAL ROOMS AND LABEL AS NAT GAS PIPING WITH FLOW DIRECTIONAL ARROWS. PIPING ON EXTENSOR SHALL BE PAINTED WITH PRIMER AND FINISHED IN EPOXY GRAY PAINT.

### DRAWING INDEX

- PLUMBING LEGEND, SCHEDULE, & NOTES
- P1.0 PLUMBING LEGEND, SCHEDULE, & NOTES
  - P2.0 LOWER LEVEL PLUMBING PLAN
  - P2.1 FIRST FLOOR PLUMBING PLAN
  - P2.2 SECOND FLOOR PLUMBING PLAN
  - P2.3 THIRD FLOOR PLUMBING PLAN
  - P2.4 FOURTH FLOOR PLUMBING PLAN
  - P2.5 FIFTH FLOOR PLUMBING PLAN
  - P2.6 ROOF PLUMBING PLAN
  - P3.0 PLUMBING RISER DIAGRAMS
  - P4.0 PLUMBING DETAILS
  - P4.1 PLUMBING DETAILS

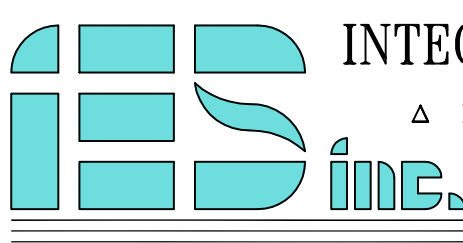


### GAS RISER DIAGRAM

SCALE: N.T.S.

**CUSTOM HOUSE SQUARE**  
300 FORE STREET  
PORTLAND, MAINE  
PLUMBING LEGEND, SCHEDULE, & NOTES

**Atlantic Comfort Systems, Inc.**  
PO BOX 665-392 HILL STREET  
BIDDEFORD, MAINE 04005  
PHONE: (207) 284-6360  
FAX: (207) 284-6377



**INTEGRATED ENGINEERED SYSTEMS, INC.**  
MECH. DESIGN    ENERGY MGT.    INDOOR AIR QUALITY  
P.O. BOX 657  
Tel: (603) 625-1346  
AUBURN, N.H. 03032  
Fax: (603) 625-8456

PROJECT #: 1493  
P.E.: JK    D.B.: CLB  
ISSUE DATE: SEPT. 19, 2006  
**P1.0**