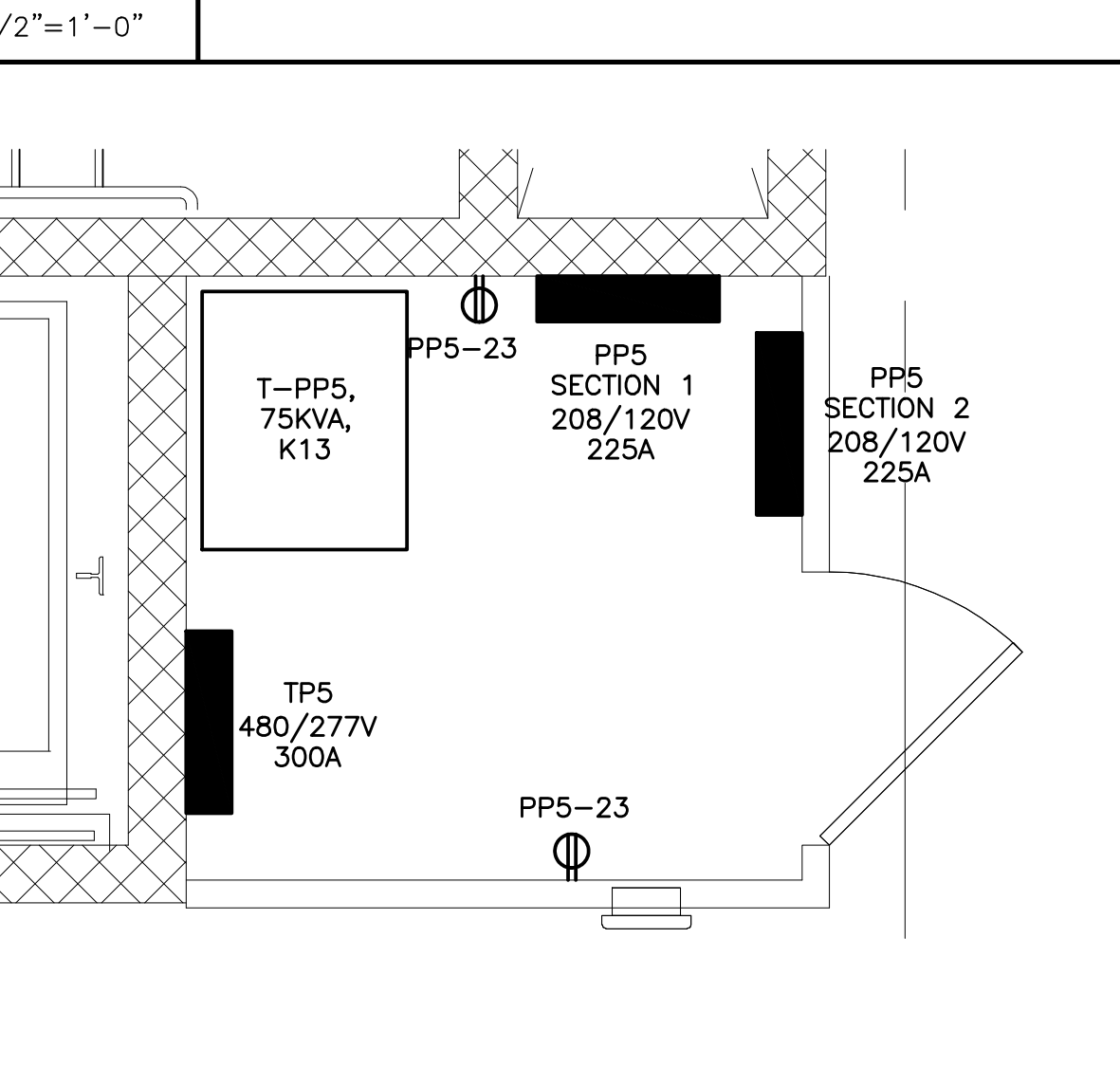
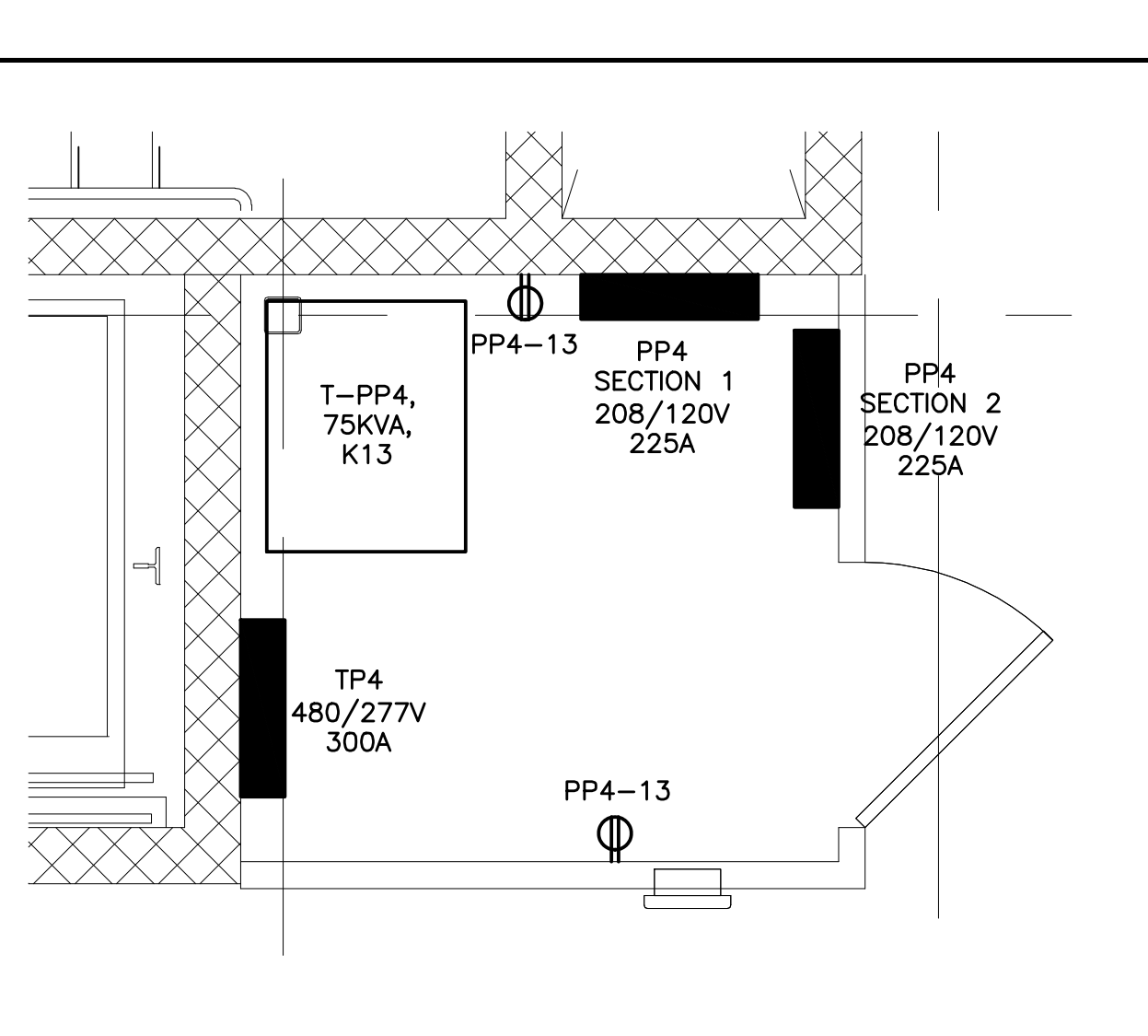
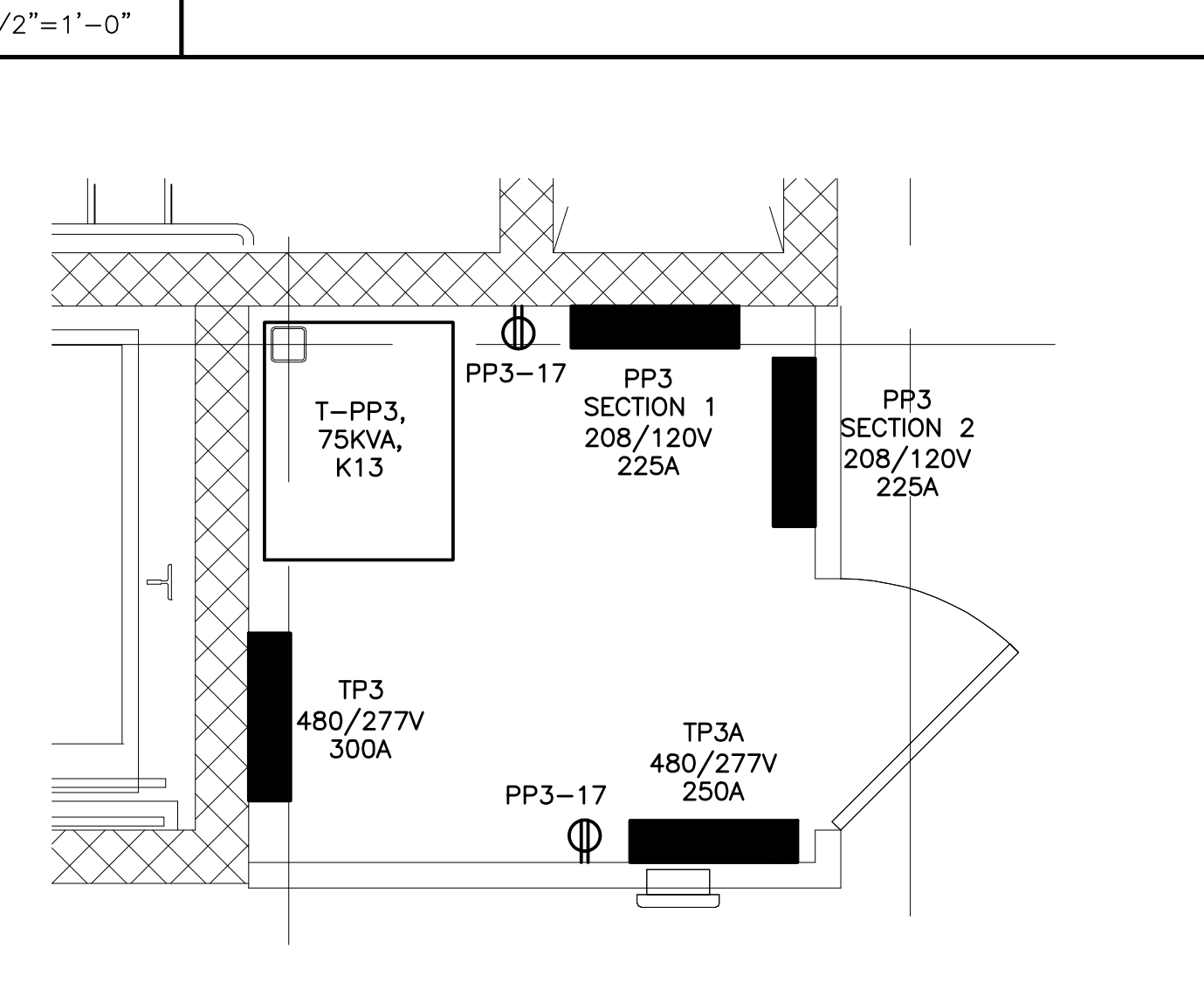


**K1** PART PLAN ELEVATOR MACHINE RM 001

**K8** PART PLAN ELEC RM 204

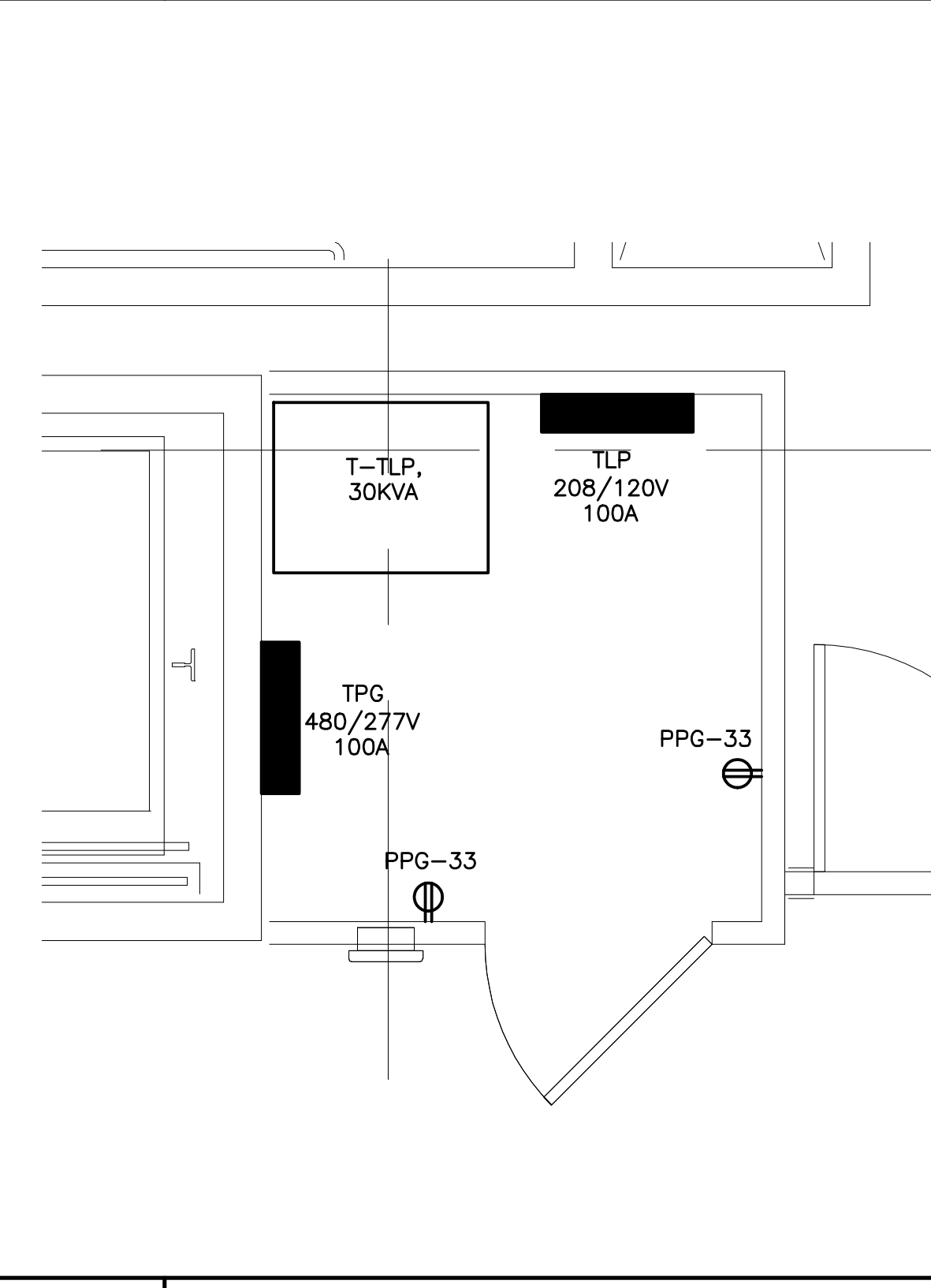
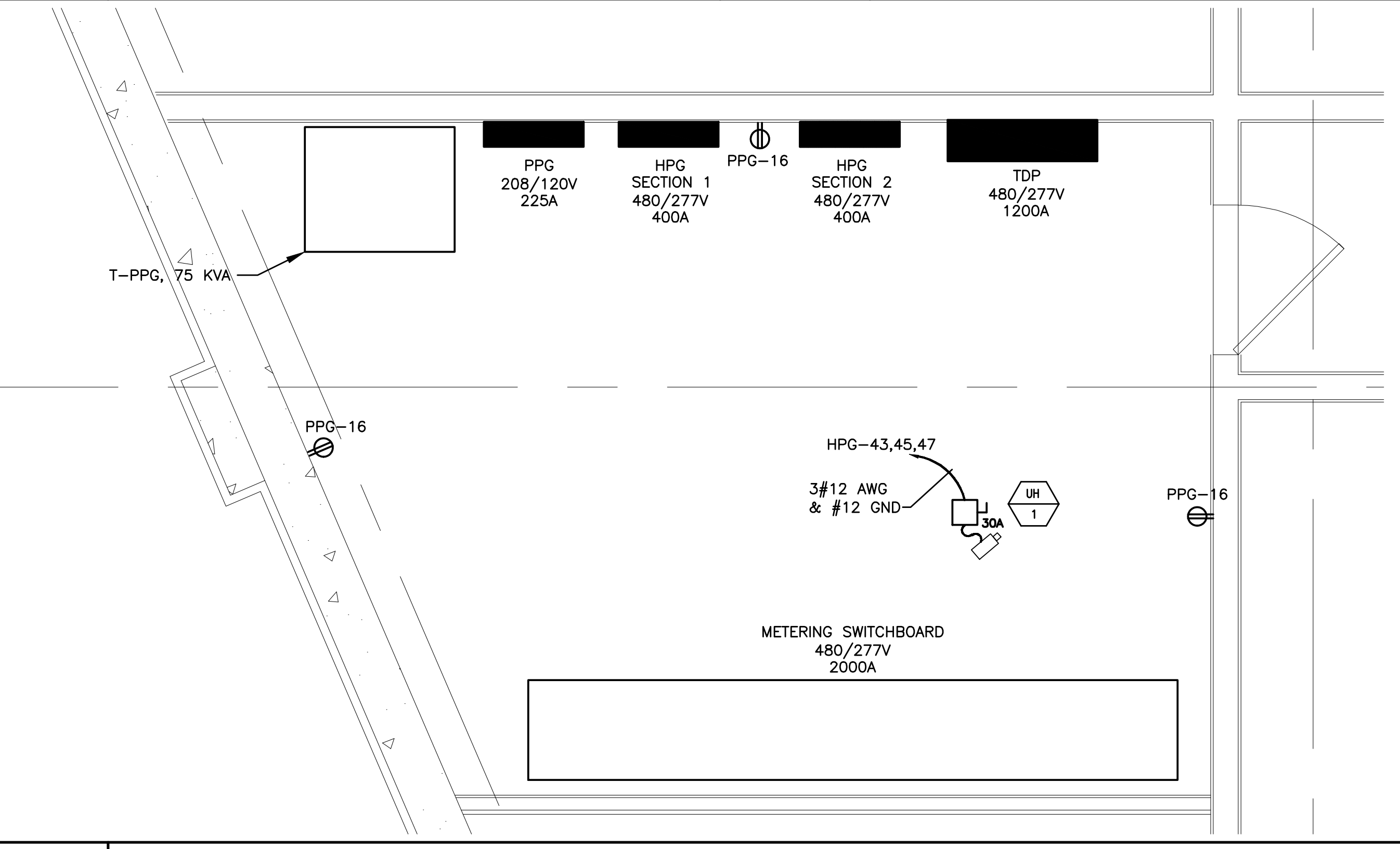


**F1** PART PLAN ELEC RM 304

**F5** PART PLAN ELEC RM 404

**F8** PART PLAN ELEC RM 504

**F12** PART PLAN SERVER ROOM



**A1** PART PLAN MAIN ELEC RM 007

**A8** PART PLAN ELEC RM GROUND FLR

**NOTE:**  
 1. SEE SHEET E-001 FOR LEGEND AND GENERAL NOTES.

**KEYED NOTE:**  
 ① PROVIDE A 125A, 3P SHUNT TRIP CIRCUIT BREAKER FOR ELEVATOR FEED. ACTIVATION OF A HEAT DETECTOR TO OPEN SHUNT TRIP CIRCUIT BREAKER. PROVIDE AUXILIARY CONTACTS TO DISABLE BATTERY LOWERING UNIT UPON ACTIVATION OF A HEAT DETECTOR OR MANUAL OPENING OF CIRCUIT BREAKER. COORDINATE ALL WORK W/ ELEVATOR INSTALLER.  
 ② FURNISH & INSTALL A 30A TWIST LOCK RECEPTACLE. COORDINATE W/ OWNER FOR NEMA CONFIGURATION OF OUTLET. WIRING TO BE 2#10 AWG & #10 GND.

CUSTOM HOUSE SQUARE  
 FORE STREET  
 PORTLAND, MAINE  
**RECORD DRAWINGS**  
 9-19-07

REV	DESCRIPTION	DATE
3	RECORD DRAWINGS	9-19-07
2	REVISED	5-23-07
1	ISSUED FOR REVISION	3-5-07
0	ISSUED FOR CONSTRUCTION	12-20-06

GRAPHIC SCALE:  
 0" 1"  
 SCALE: AS NOTED  
 PROJECT MANAGER: DJT  
 JC/DRAWN BY: CDS  
 A/E OF RECORD: DJT  
 CAD FILE: EP401-06068  
 PROJECT NO: 06068  
 DATE: 12-20-06  
 SHEET TITLE:  
**PART PLANS**  
 SHEET No.  
**EP401**