

NOTE:

1. SEE SHEET E-001 FOR LEGEND AND GENERAL NOTES.

KEYED NOTE:

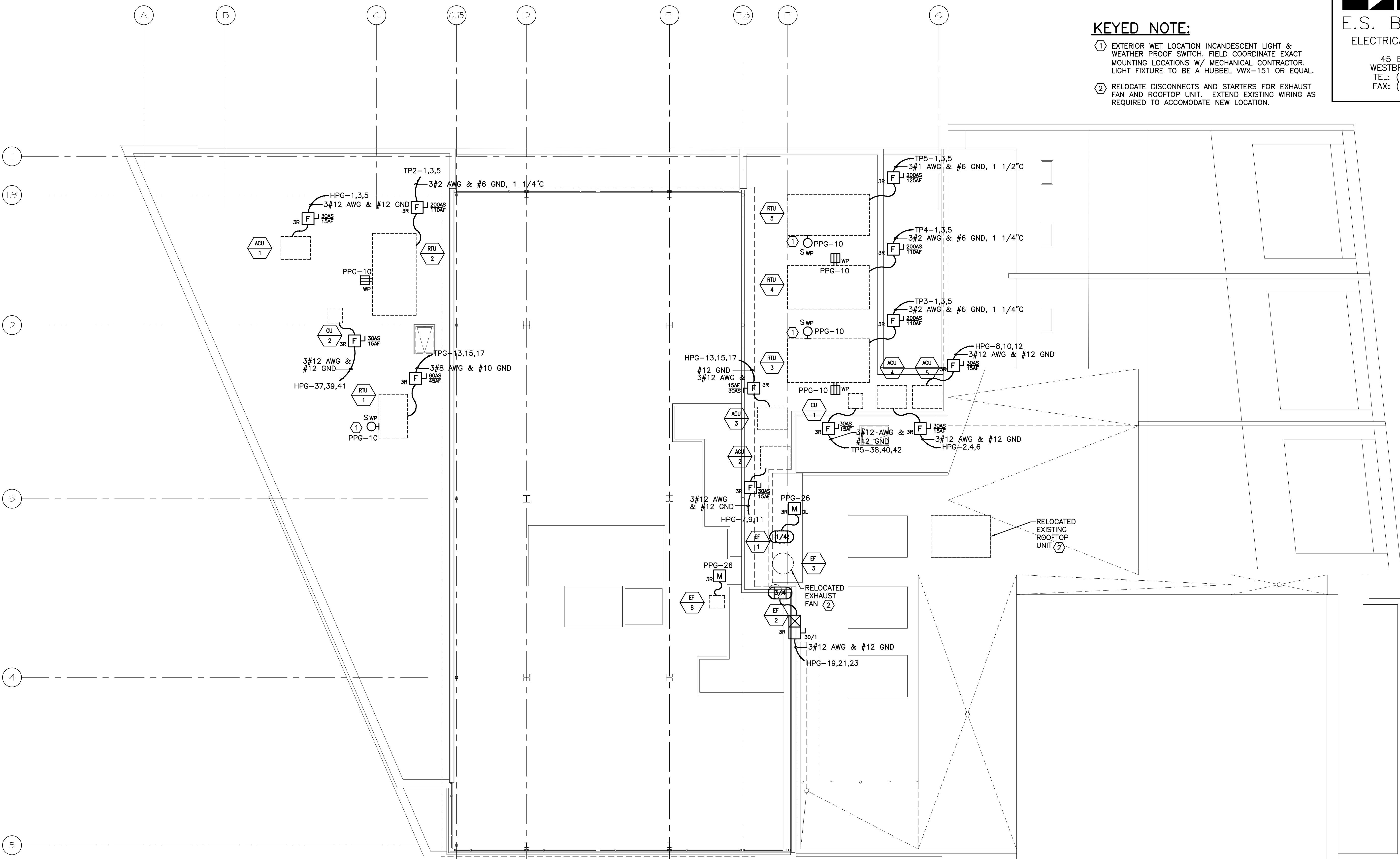
- ① EXTERIOR WET LOCATION INCANDESCENT LIGHT & WEATHER PROOF SWITCH. FIELD COORDINATE EXACT MOUNTING LOCATIONS W/ MECHANICAL CONTRACTOR. LIGHT FIXTURE TO BE A HUBBEL VWX-151 OR EQUAL.
- ② RELOCATE DISCONNECTS AND STARTERS FOR EXHAUST FAN AND ROOFTOP UNIT. EXTEND EXISTING WIRING AS REQUIRED TO ACCOMMODATE NEW LOCATION.

ESB
E.S. BOULOS CO
 ELECTRICAL CONTRACTORS

45 BRADLEY DRIVE
 WESTBROOK, ME 04092
 TEL: (207) 464-3706
 FAX: (207) 464-1833

SM
RT

ARCHITECTURE ENGINEERING PLANNING
 SMART
 144 Fore Street/P.O. Box 618
 Portland, Maine 04104
 tel. (207) 775-3846
 fax. (207) 775-1070



PROJECT TITLE:
**CUSTOM HOUSE SQUARE
 FORE STREET**
 PORTLAND, MAINE

CURRENT ISSUE STATUS:
**RECORD DRAWINGS
 9-19-07**

REV	DESCRIPTION	DATE
3	RECORD DRAWINGS	9-19-07
2	REVISED	5-23-07
1	ISSUED FOR REVISION	3-5-07
0	ISSUED FOR CONSTRUCTION	12-20-06

GRAPHIC SCALE:
 0" 1"

SCALE: AS NOTED
 PROJECT MANAGER: DJT
 JC/DRAWN BY: CDS
 A/E OF RECORD: DJT
 CAD FILE: EP107-06068
 PROJECT NO: 06068
 DATE: 12-20-06

SHEET TITLE:
**ROOF VAULT STORY
 POWER PLAN**

SHEET No.
EP107

A1 FIFTH FLOOR PLAN

1/8"=1'-0"