

NOTE:

1. SEE SHEET E-001 FOR LEGEND AND GENERAL NOTES.

KEYED NOTE:

- ① MOUNT RECEPTACLE 42" AFF TO BOTTOM OF DEVICE.
- ② PROVIDE JUNCTION BOX WALL MOUNTED ON COLUMN OR WALL AT LOCATIONS SHOWN FOR MODULAR FURNITURE POWER FEED. WIRING TO BE 4 #12 AWG PHASE CONDUCTORS, 2 #10 AWG NEUTRALS AND 2 #12 AWG GND.
- ③ PROVIDE SLEEVE IN FLOOR SLAB AT LOCATIONS SHOWN FOR MODULAR FURNITURE POWER FEED. WIRING TO BE 4 #12 AWG PHASE CONDUCTORS, 2 #10 AWG NEUTRALS AND 2 #12 AWG GND.
- ④ ELECTRIC BASEBOARD TIED INTO CONTROL SYSTEM.
- ⑤ FURNISH AND INSTALL A WALKER POKE THROUGH STYLE FLOOR BOX WITH DUPLEX RECEPTACLE AND PROVISIONS FOR VOICE/DATA WIRING.

ESB
E.S. BOULOS CO
 ELECTRICAL CONTRACTORS

45 BRADLEY DRIVE
 WESTBROOK, ME 04092
 TEL: (207) 464-3706
 FAX: (207) 464-1833

SMT
RT

ARCHITECTURE ENGINEERING PLANNING
 SMART
 144 Fore Street/P.O. Box 618
 Portland, Maine 04104
 tel. (207) 775-3846
 fax. (207) 775-1070

CUSTOM HOUSE SQUARE
 FORE STREET
 PORTLAND, MAINE
RECORD DRAWINGS
9-19-07

PROJECT TITLE:
 CURRENT ISSUE STATUS:

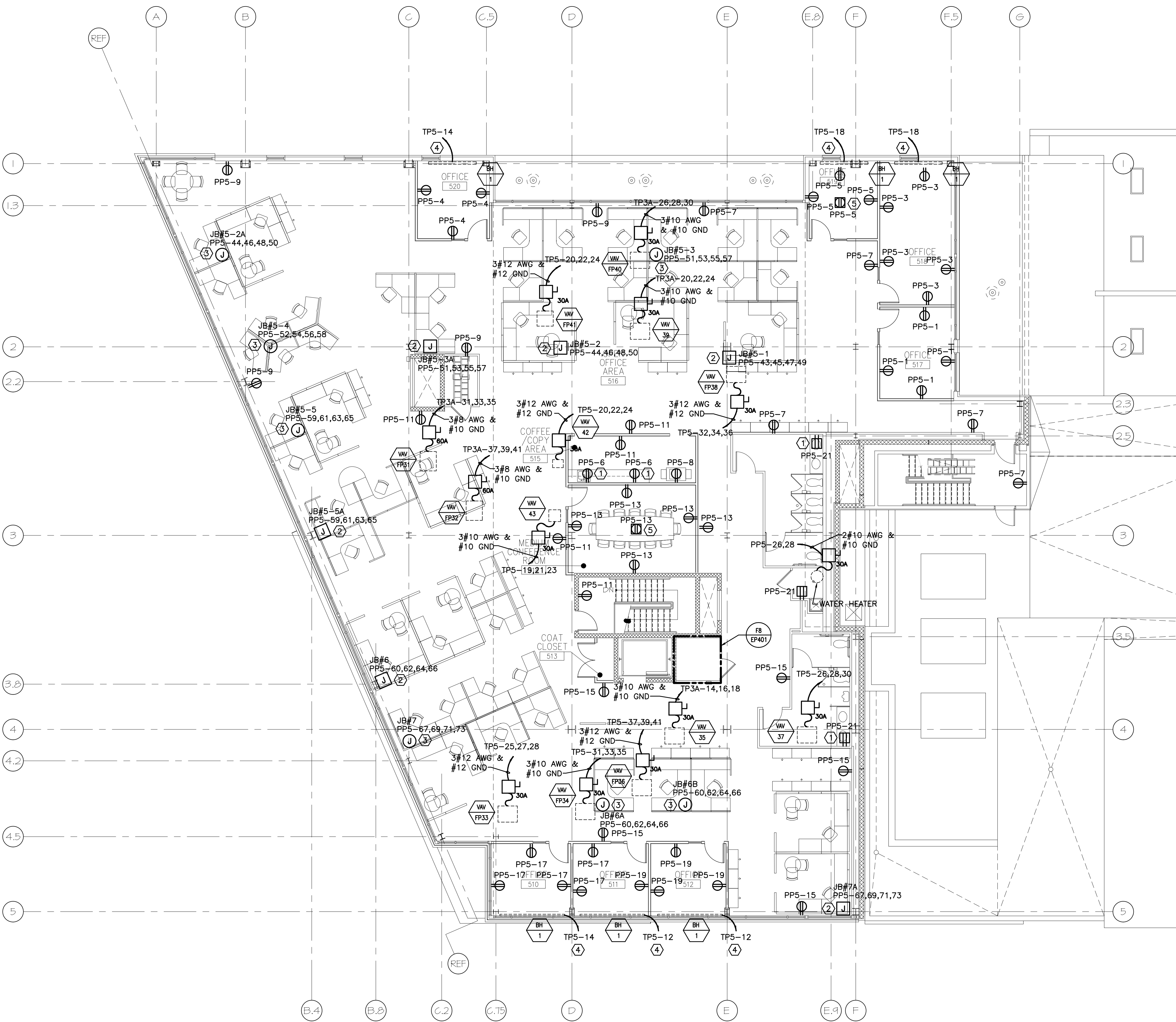
REV	DESCRIPTION	DATE
3	RECORD DRAWINGS	9-19-07
2	REVISED	5-23-07
1	ISSUED FOR REVISION	3-5-07
0	ISSUED FOR CONSTRUCTION	12-20-06

GRAPHIC SCALE:
 0" 1"

SCALE: AS NOTED
 PROJECT MANAGER: DJT
 JC/DRAWN BY: CDS
 A/E OF RECORD: DJT
 CAD FILE: EP106-06068
 PROJECT NO: 06068
 DATE: 12-20-06

SHEET TITLE:
**FIFTH FLOOR
 POWER PLAN**

SHEET No.
EP106



A1 FIFTH FLOOR PLAN

1/8"=1'-0"