

NOTE:

1. SEE SHEET E-001 FOR LEGEND AND GENERAL NOTES.

KEYED NOTE:

- ① MOUNT RECEPTACLE 42" AFF TO BOTTOM OF DEVICE.
- ② PROVIDE JUNCTION BOX WALL MOUNTED ON COLUMN OR WALL AT LOCATIONS SHOWN FOR MODULAR FURNITURE POWER FEED. WIRING TO BE 4 #12 AWG PHASE CONDUCTORS, 2 #10 AWG NEUTRALS AND 2 #12 AWG GND.
- ③ PROVIDE SLEEVE IN FLOOR SLAB AT LOCATIONS SHOWN FOR MODULAR FURNITURE POWER FEED. WIRING TO BE 4 #12 AWG PHASE CONDUCTORS, 2 #10 AWG NEUTRALS AND 2 #12 AWG GND.
- ④ ELECTRIC BASEBOARD TO BE FED VIA LINE VOLTAGE THERMOSTAT SUPPLIED BY DIVISION 15.
- ⑤ FURNISH AND INSTALL A WALKER POKE THROUGH STYLE FLOOR BOX WITH DUPLEX RECEPTACLE AND PROVISIONS FOR VOICE/DATA WIRING.

ESB
E.S. BOULOS CO
ELECTRICAL CONTRACTORS

45 BRADLEY DRIVE
WESTBROOK, ME 04092
TEL: (207) 464-3706
FAX: (207) 464-1833

SM
RT

ARCHITECTURE ENGINEERING PLANNING
SMART
144 Fore Street/P.O. Box 618
Portland, Maine 04104
tel. (207) 775-3846
fax. (207) 775-1070

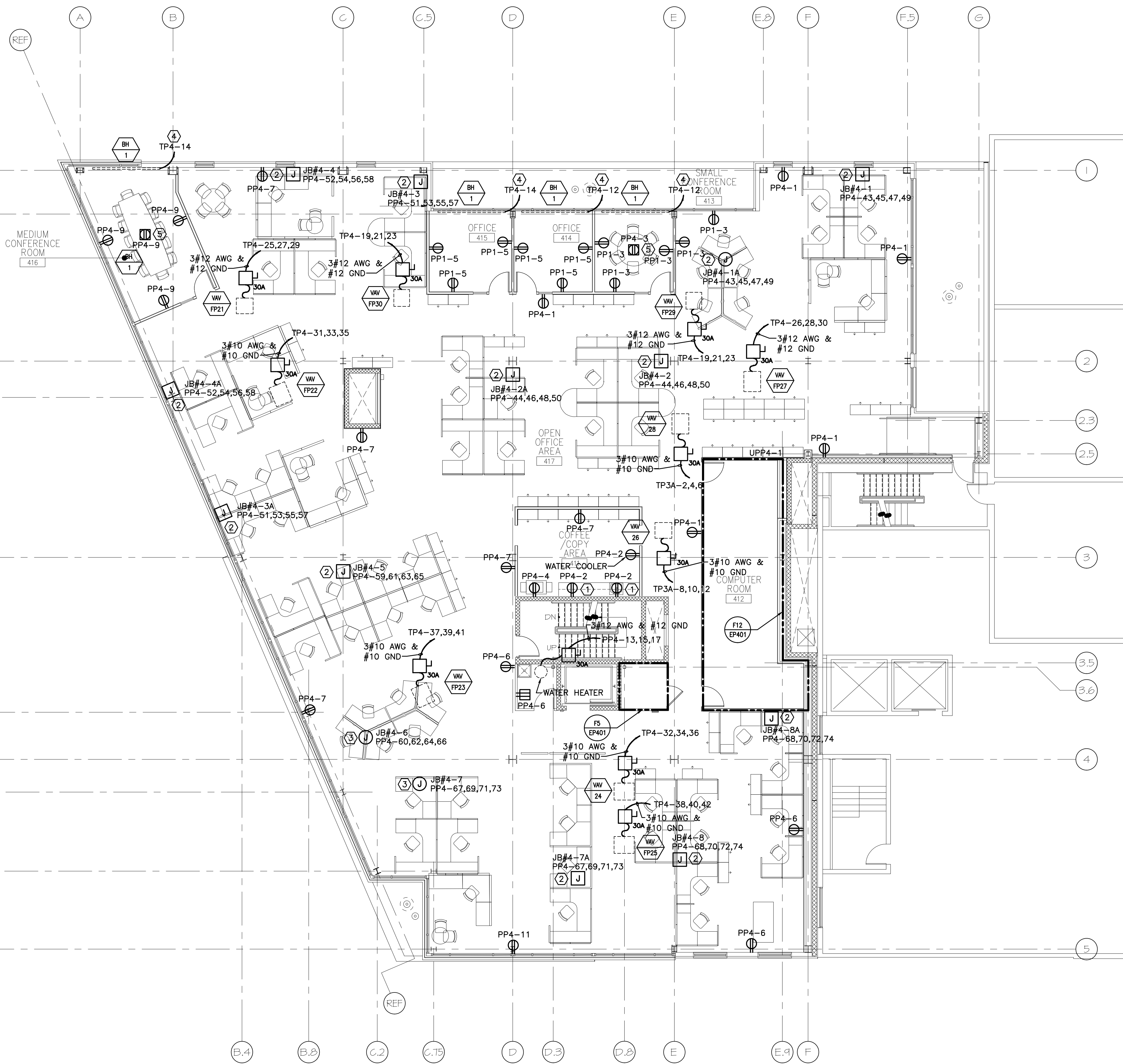
PROJECT TITLE: CUSTOM HOUSE SQUARE
FORE STREET
PORTLAND, MAINE
CURRENT ISSUE STATUS: RECORD DRAWINGS
9-19-07
REVISED
5-23-07
ISSUED FOR REVISION
3-5-07
ISSUED FOR CONSTRUCTION
12-20-06
REV. DESCRIPTION DATE

REV.	DESCRIPTION	DATE
3	RECORD DRAWINGS	9-19-07
2	REVISED	5-23-07
1	ISSUED FOR REVISION	3-5-07
0	ISSUED FOR CONSTRUCTION	12-20-06

GRAPHIC SCALE:
0" 1"
SCALE: AS NOTED
PROJECT MANAGER: DJT
JC/DRAWN BY: CDS
A/E OF RECORD: DJT
CAD FILE: EP105-06068
PROJECT NO: 06068
DATE: 12-20-06
SHEET TITLE:

FOURTH FLOOR
POWER PLAN

SHEET No.
EP105



A1 FOURTH FLOOR PLAN

1/8"=1'-0"