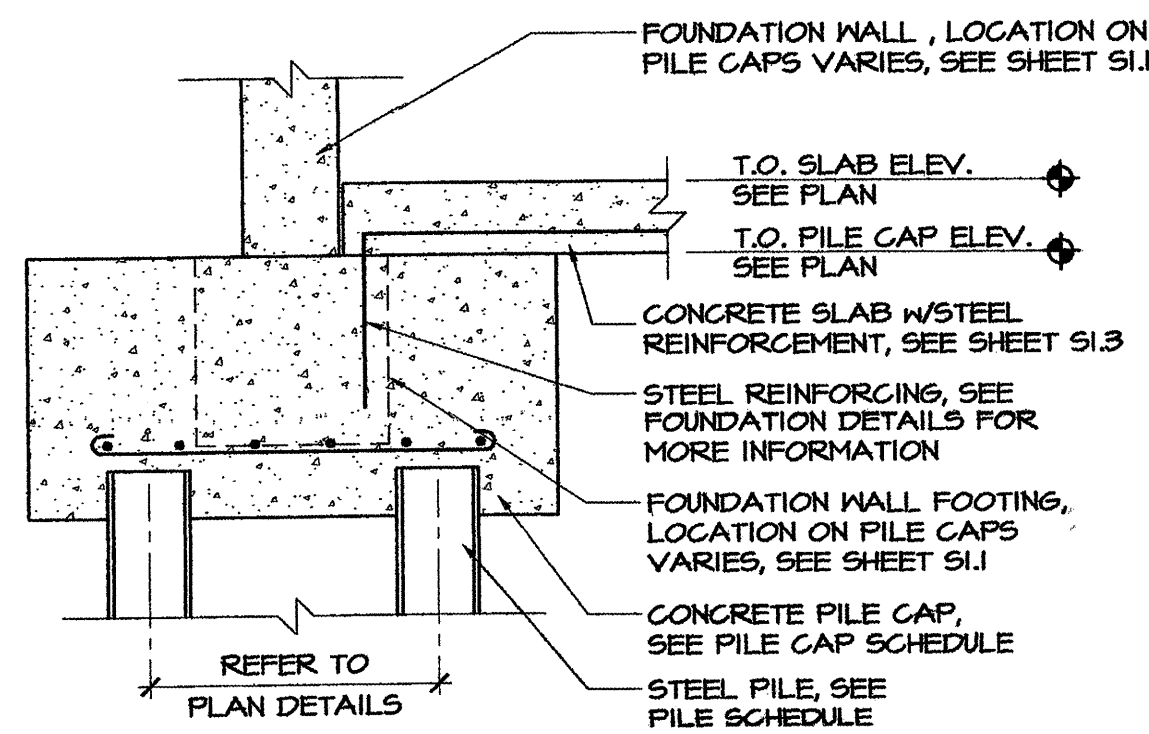


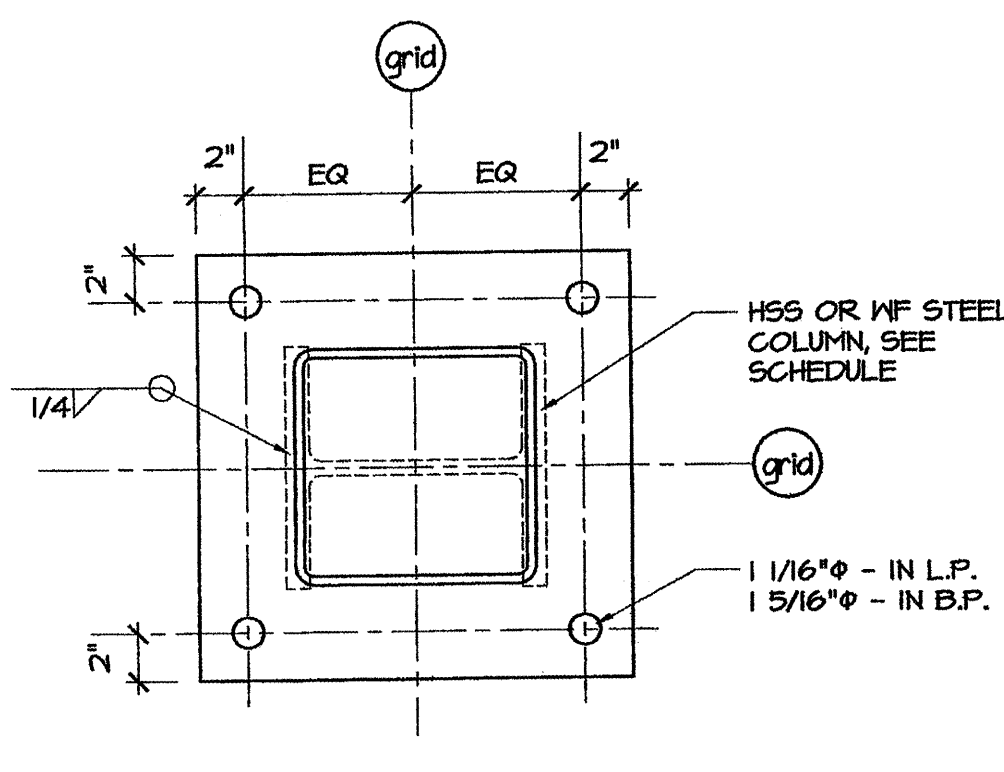
12 INTERIOR PILE CAP SECTION

SCALE: 1/2" = 1'-0"



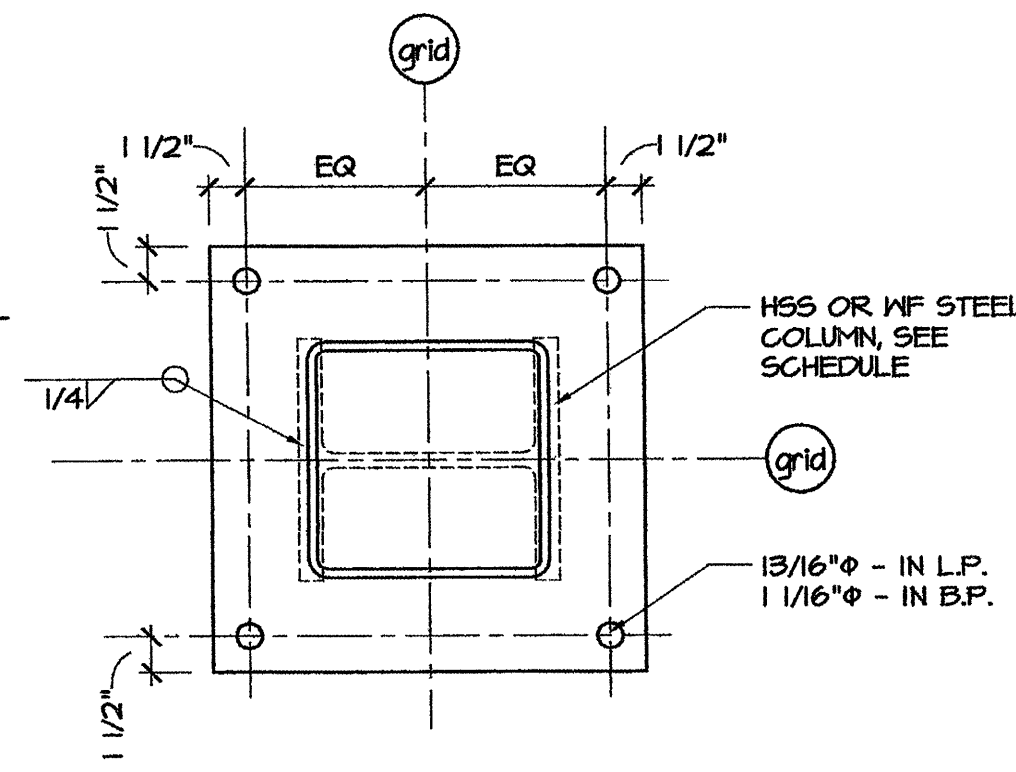
13 PILE CAP SECTION @ EXT WALL

SCALE: 1/2" = 1'-0"



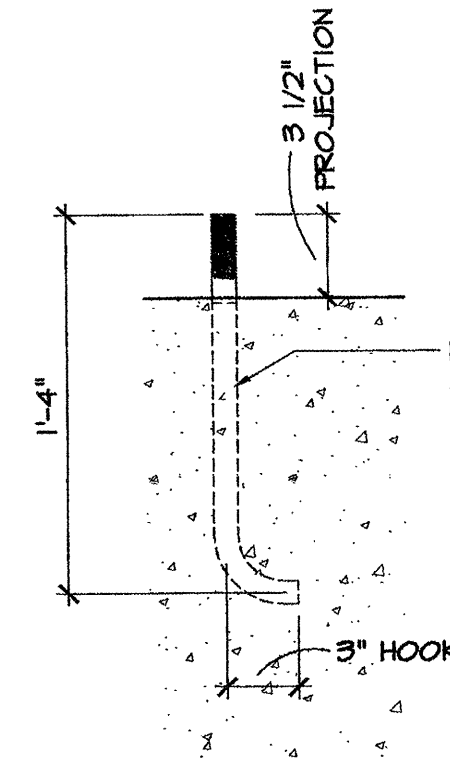
B-2 BASE PLATE DETAIL

SCALE: 1 1/2" = 1'-0"



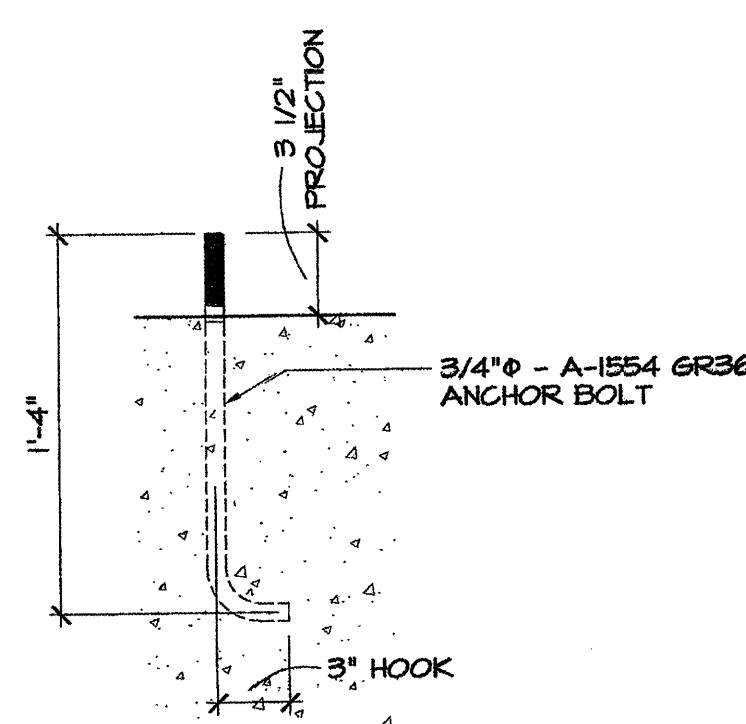
B-1 BASE PLATE DETAIL

SCALE: 1 1/2" = 1'-0"



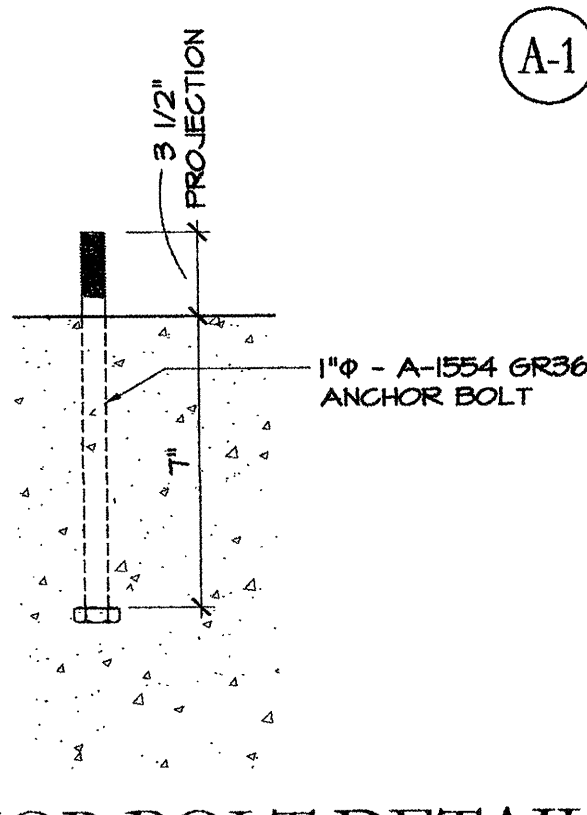
A-2 ANCHOR BOLT DETAIL

SCALE: 1 1/2" = 1'-0"



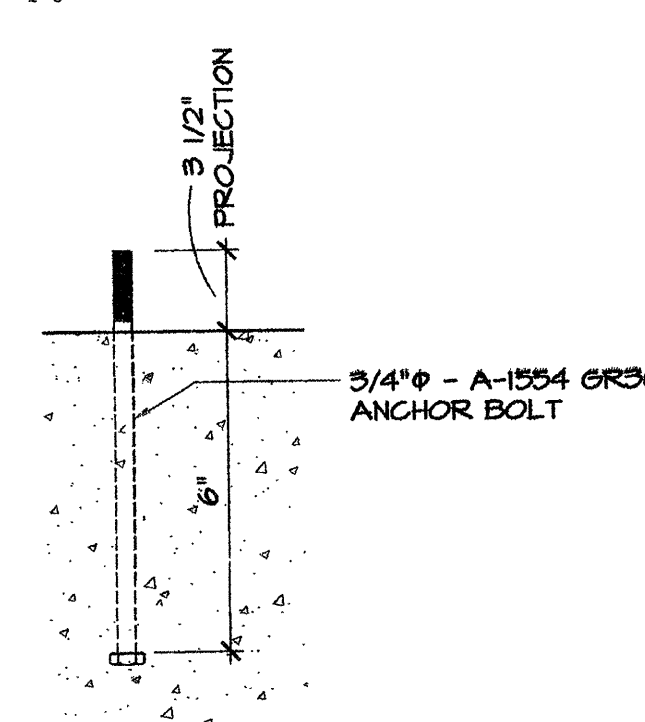
A-1 ANCHOR BOLT DETAIL

SCALE: 1 1/2" = 1'-0"



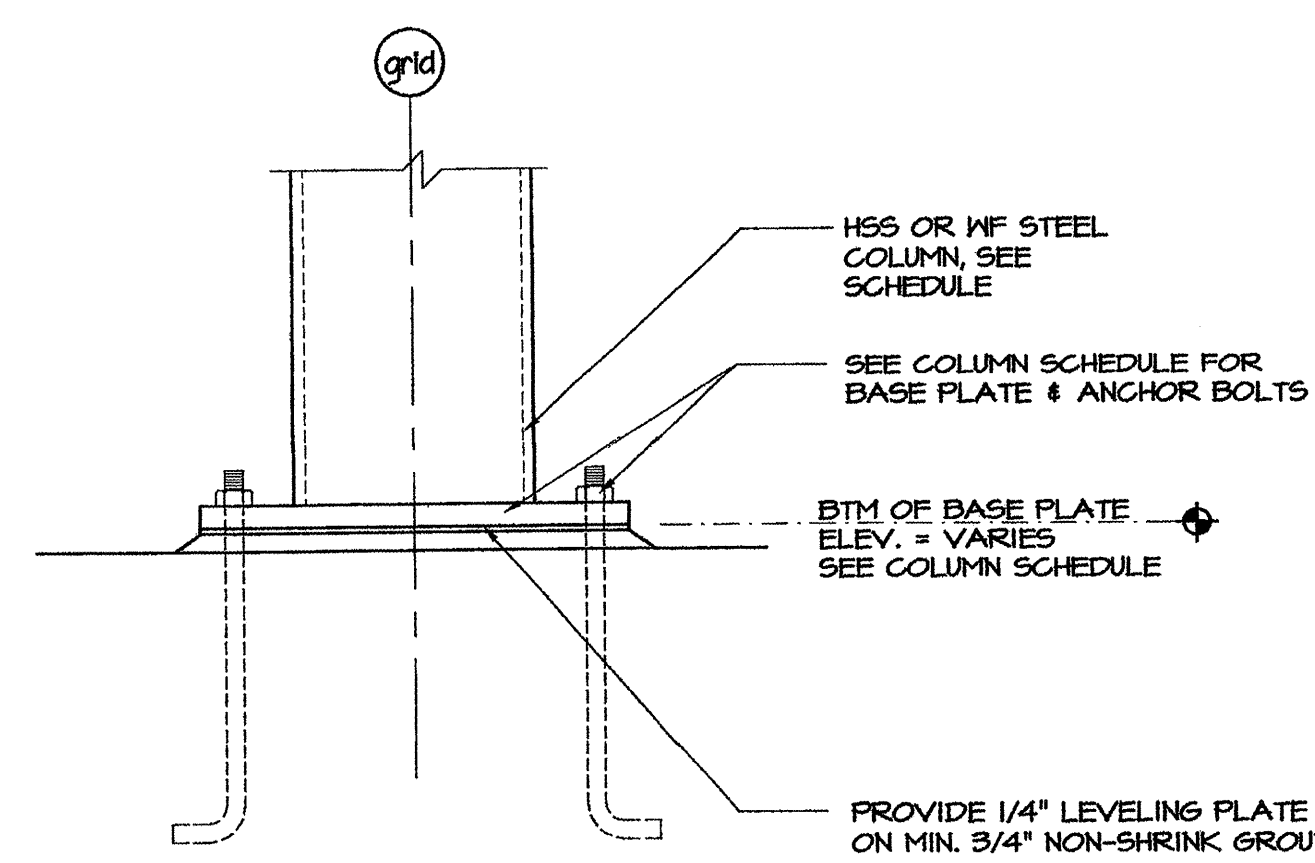
A-4 ANCHOR BOLT DETAIL

SCALE: 1 1/2" = 1'-0"



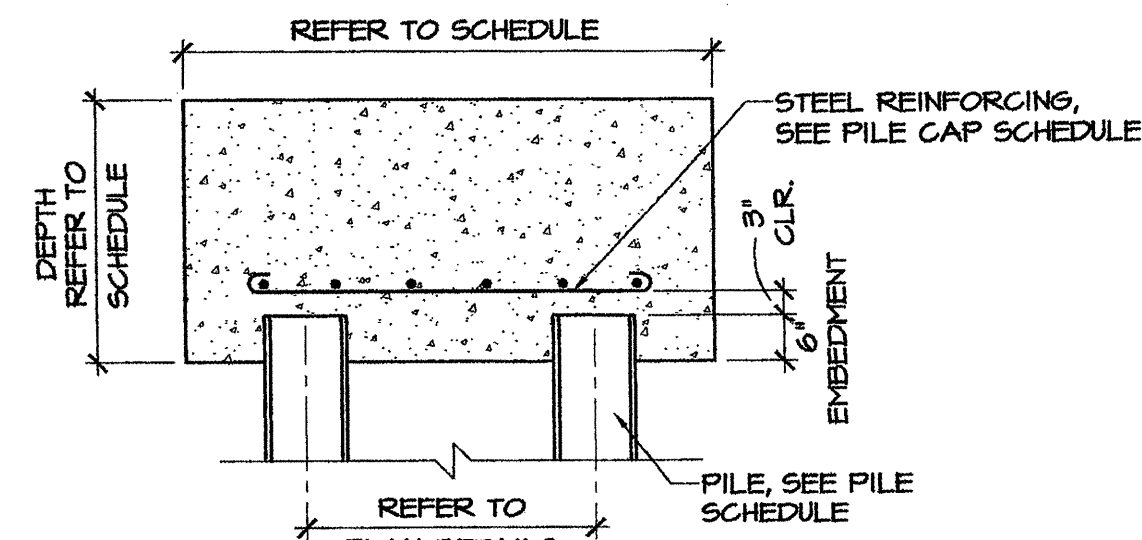
A-3 ANCHOR BOLT DETAIL

SCALE: 1 1/2" = 1'-0"



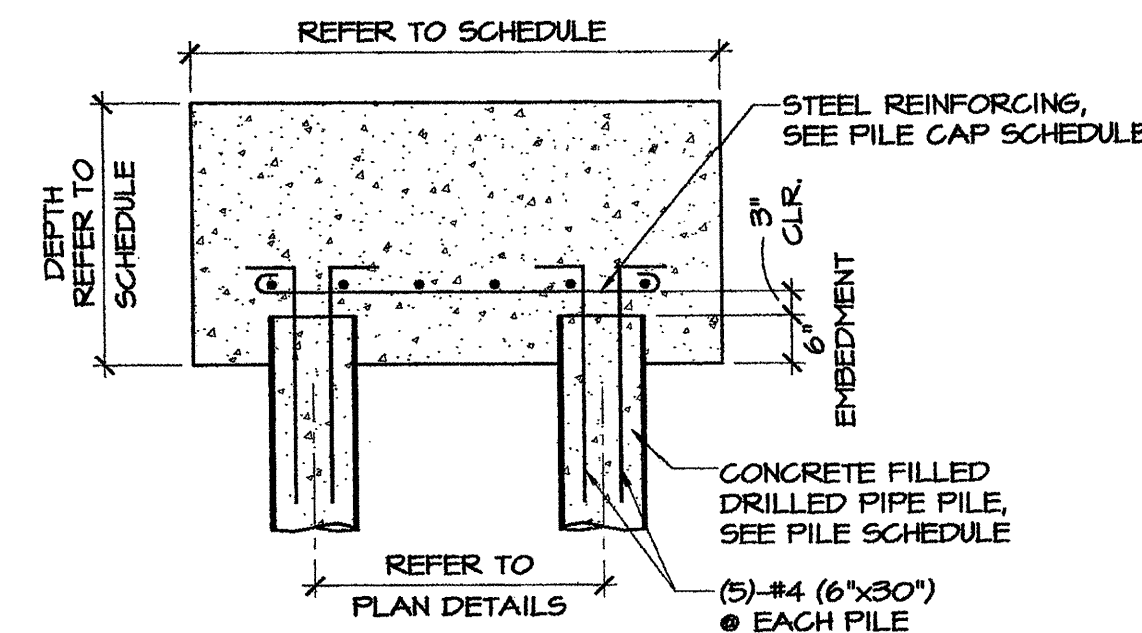
B-3 BASE PLATE SECTION

SCALE: 1 1/2" = 1'-0"



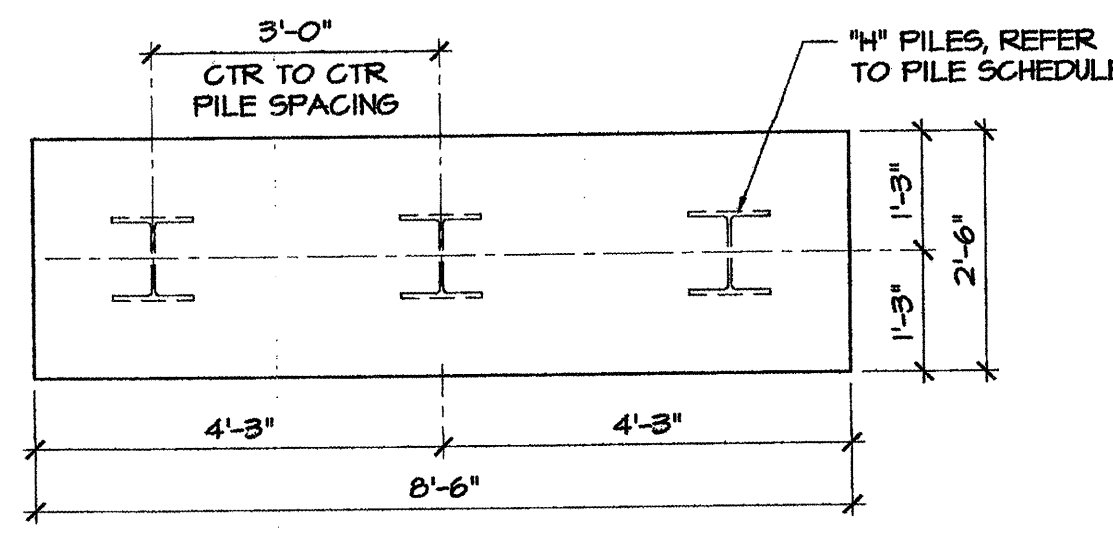
10 PILE CAP SECTION @ "H" PILES

SCALE: 1/2" = 1'-0"



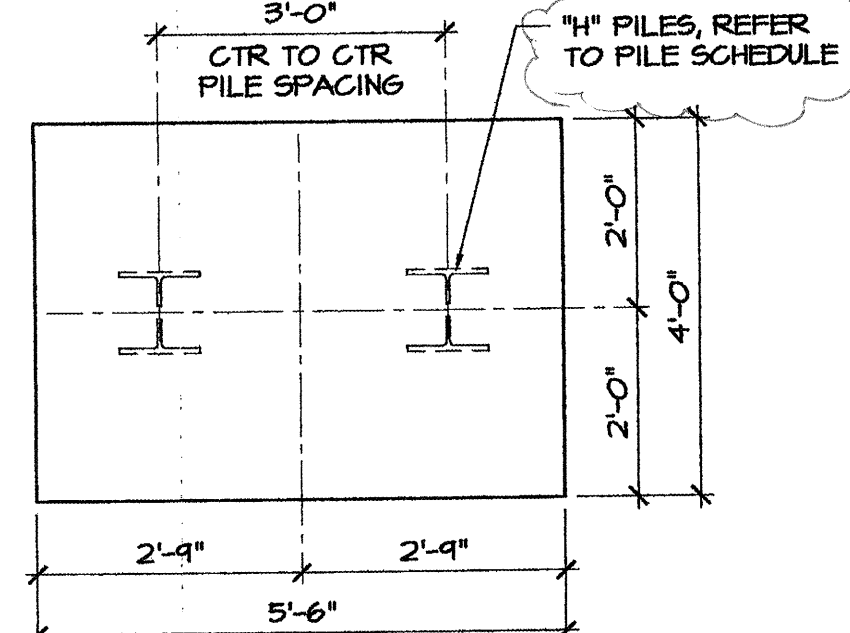
11 PILE CAP SECTION @ ROUND PILES

SCALE: 3/4" = 1'-0"



8 PILE CAP DETAIL

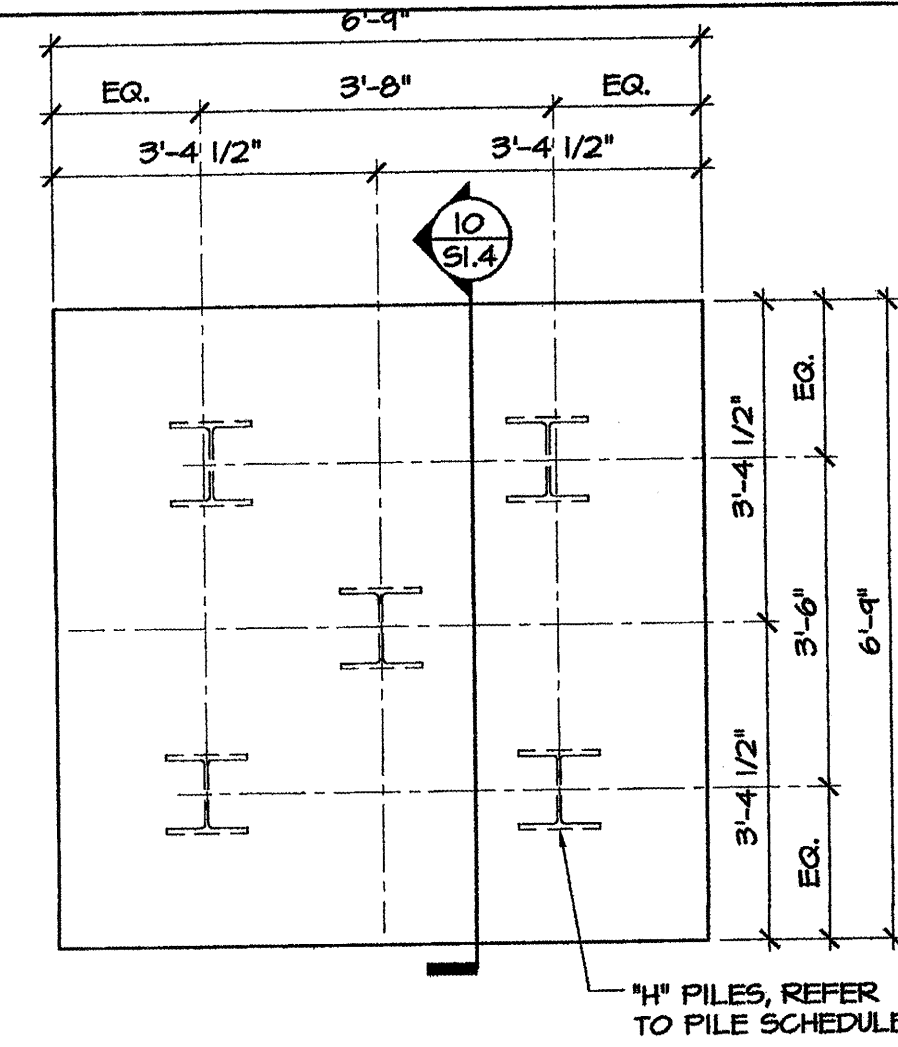
SCALE: 1/2" = 1'-0"



9 PILE CAP DETAIL

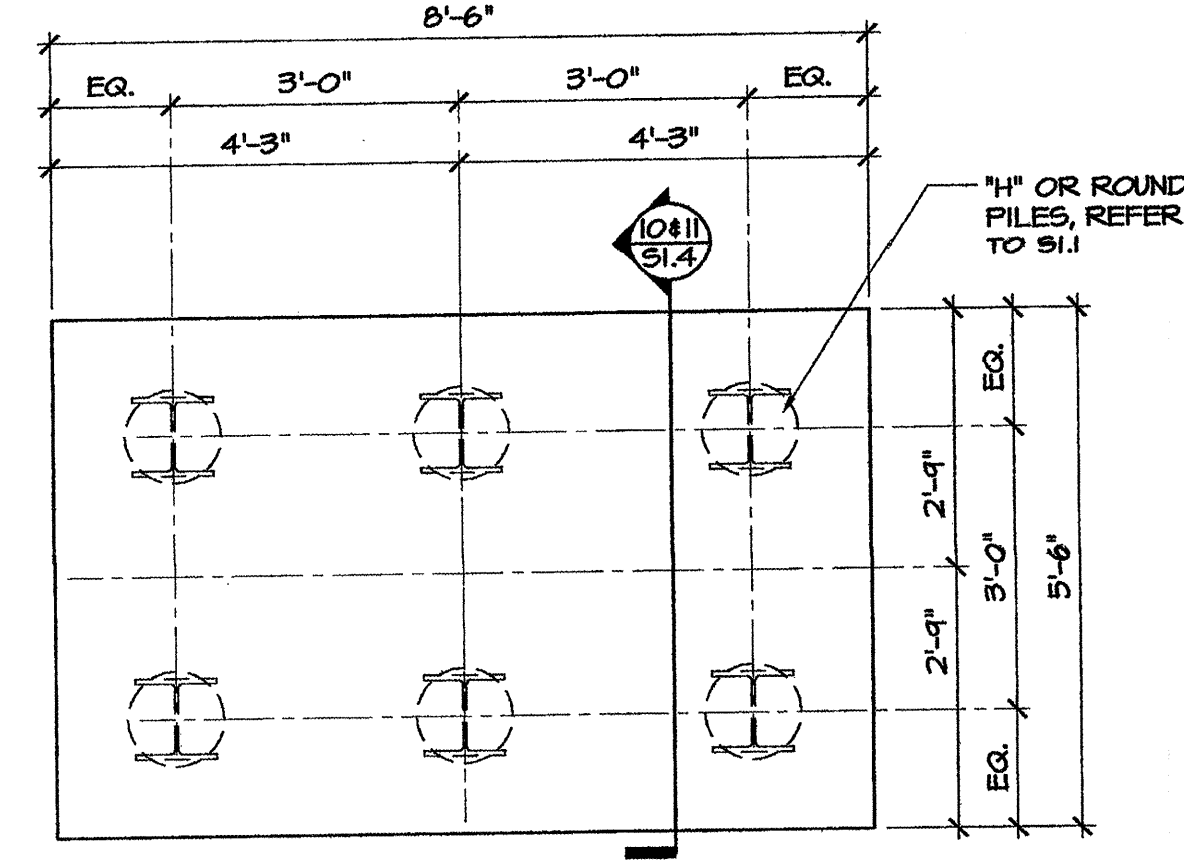
SCALE: 1/2" = 1'-0"

FOR CHANGES TO PILE CAP SIZES AND LAYOUTS AT ALL LOCATIONS SEE: REF #25



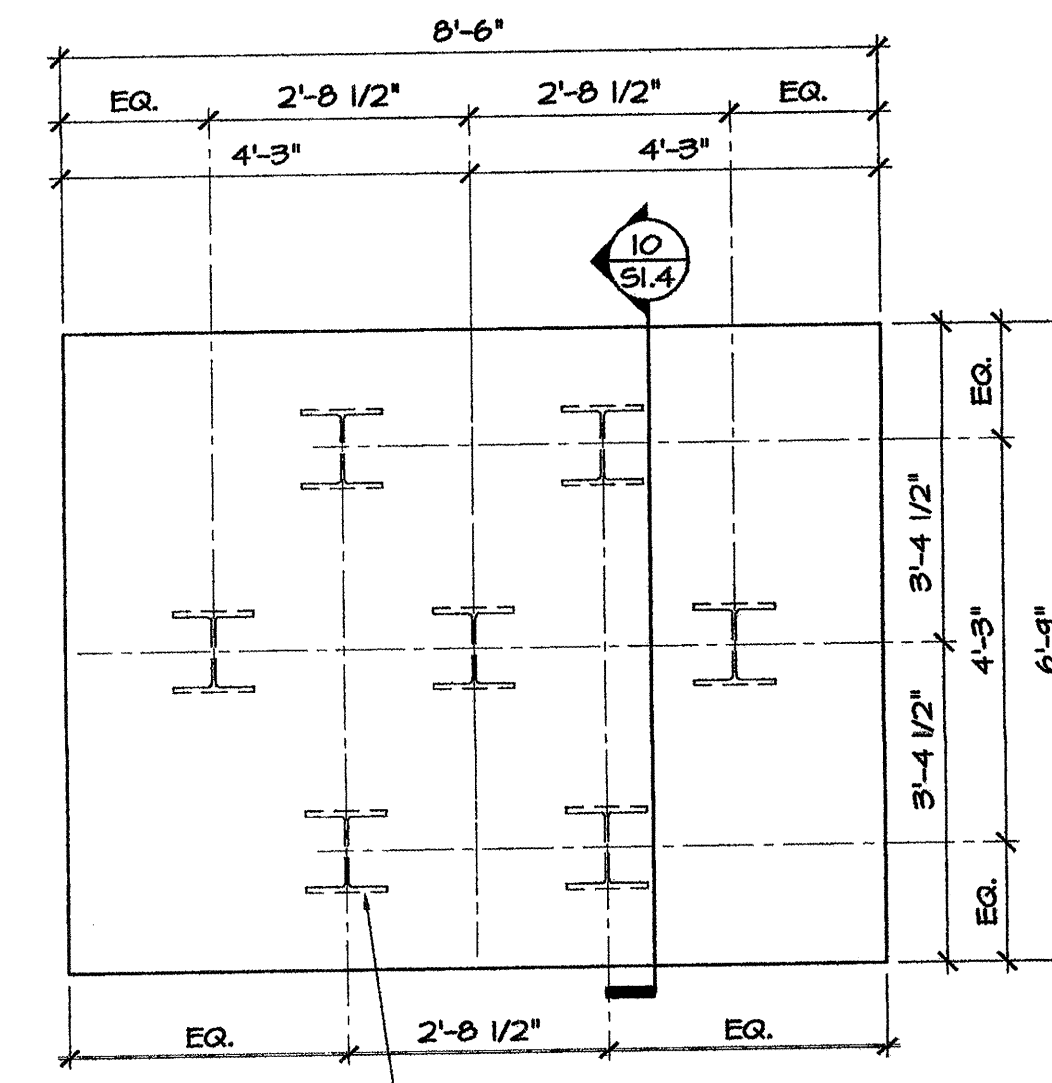
5 PIER CAP DETAIL

SCALE: 1/2" = 1'-0"



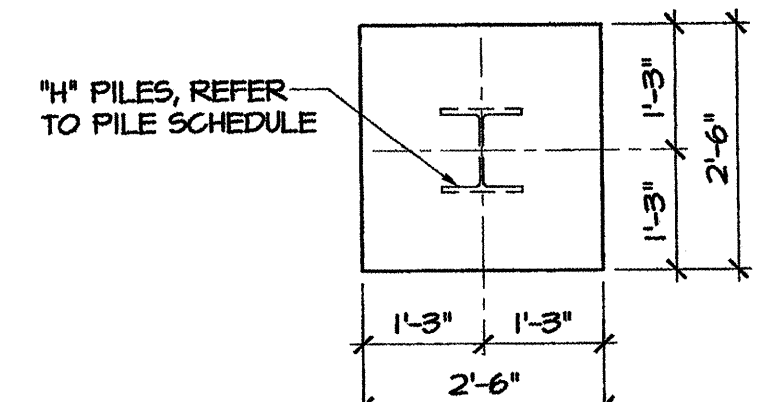
6 PIER CAP DETAIL

SCALE: 1/2" = 1'-0"



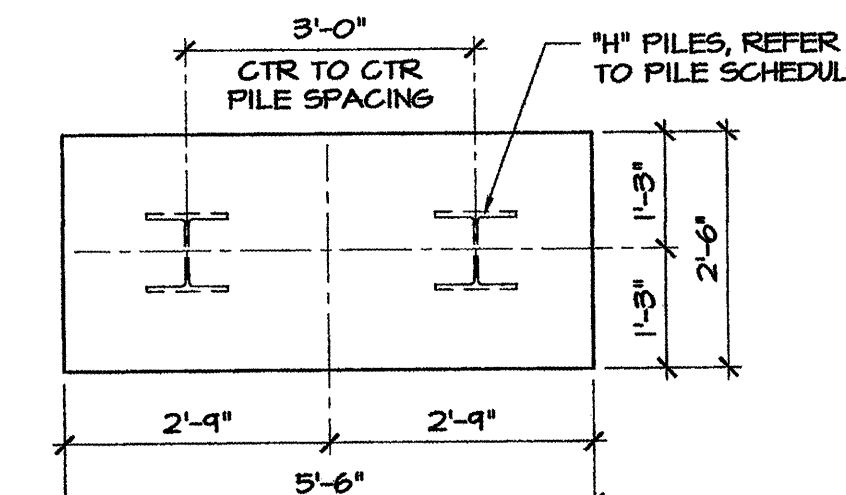
7 PIER CAP DETAIL

SCALE: 1/2" = 1'-0"



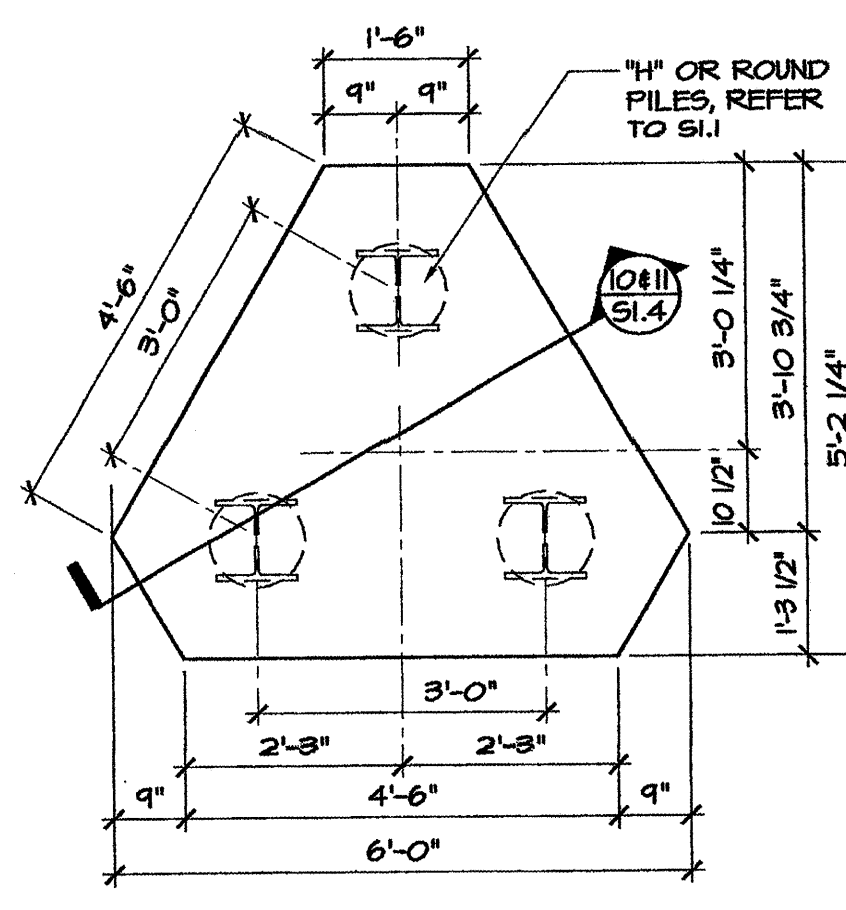
1 PIER CAP DETAIL

SCALE: 1/2" = 1'-0"



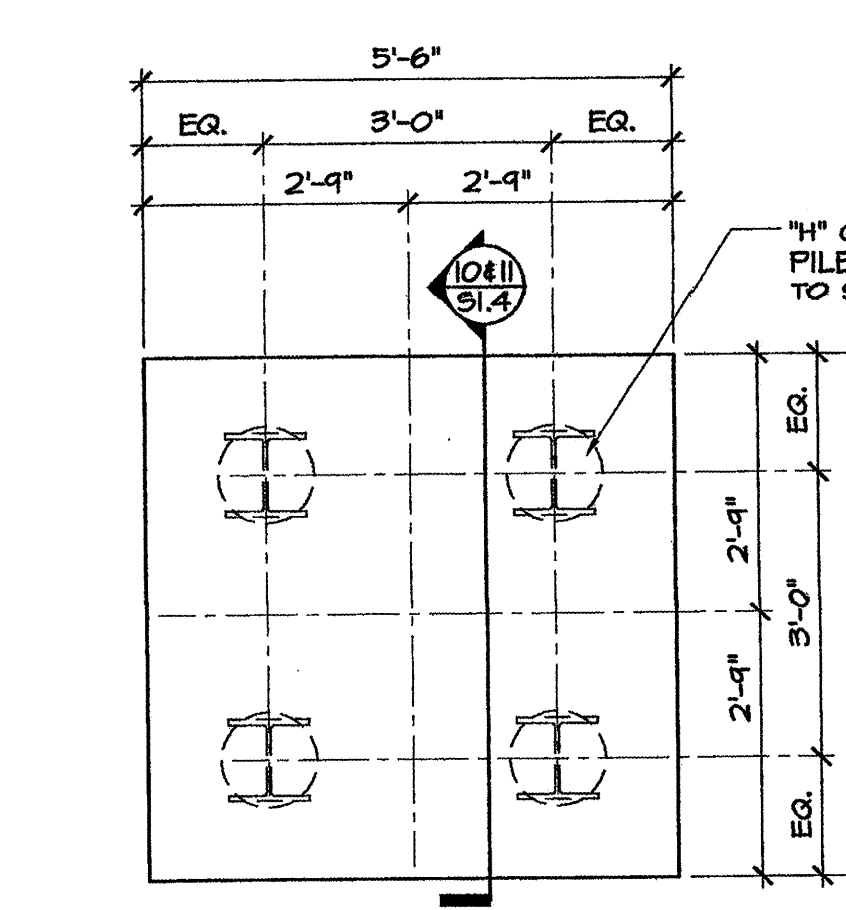
2 PILE CAP DETAIL

SCALE: 1/2" = 1'-0"



3 PILE CAP DETAIL

SCALE: 1/2" = 1'-0"



4 PIER CAP DETAIL

SCALE: 1/2" = 1'-0"

PILE SCHEDULE	
PILE SECTION ASTM A572 GRADE 50	ALLOWABLE AXIAL COMPRESSIVE PILE CAPACITY (1/8" CORROSION ALLOWANCE)
HPI0x51 or HPI2x53	80 kips
5" Ø CONCRETE FILLED PIPE PILE	40 kips

NOTES:
 1. AXIAL CAPACITY BASED UP 1/8" CORROSION REDUCTION IN STEEL AND WORKING STRESS NOT EXCEEDING 16.7 ksi
 2. MINIMUM CONCRETE COMPRESSIVE STRENGTH, f'c = 4000 psi
 3. PIPE PILES SHOULD BE FILLED WITH CONCRETE WITH A MINIMUM COMPRESSIVE STRENGTH OF 5000 psi

- NOTES:
 1. HOOK BOTH ENDS OF ALL BARS 180°
 2. GRADE 60 REBAR REQUIRED
 3. MINIMUM CONCRETE COMPRESSIVE STRENGTH, f'c = 4000 psi
 4. SEE SHEET S1.1 FOR PILE CAP SCHEDULE
 5. SEE SHEET S4.1 FOR COLUMN SCHEDULE

NOT FOR CONSTRUCTION
 05/26/06