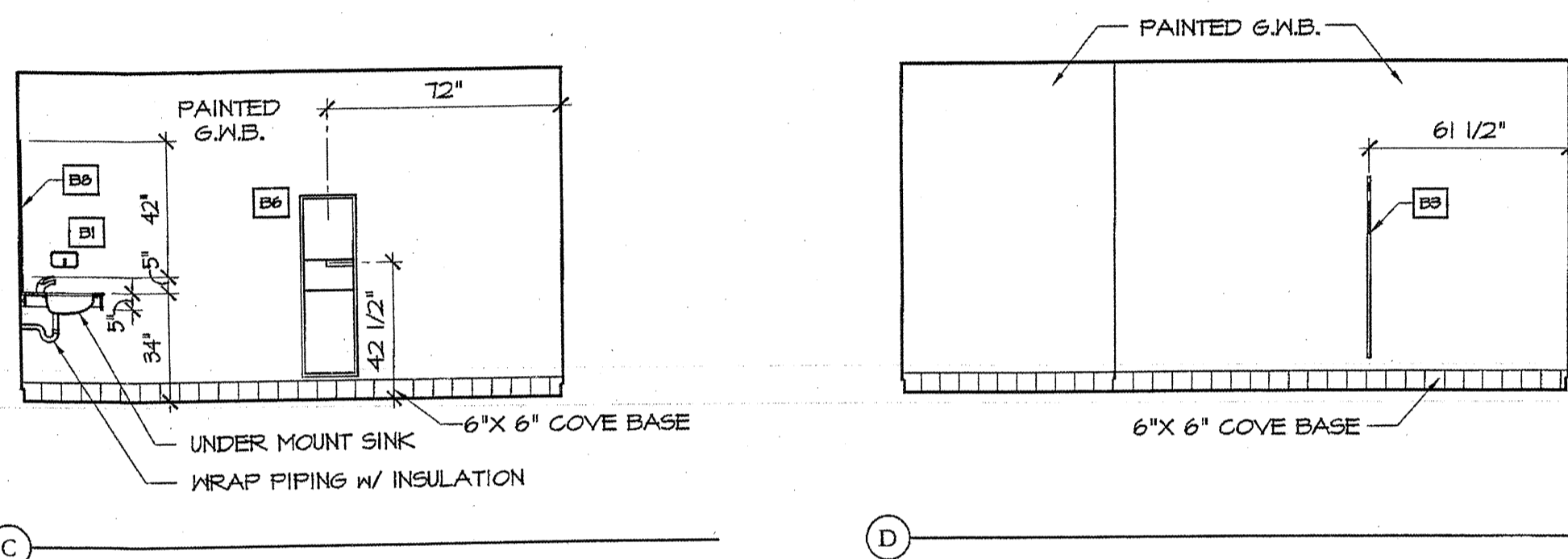


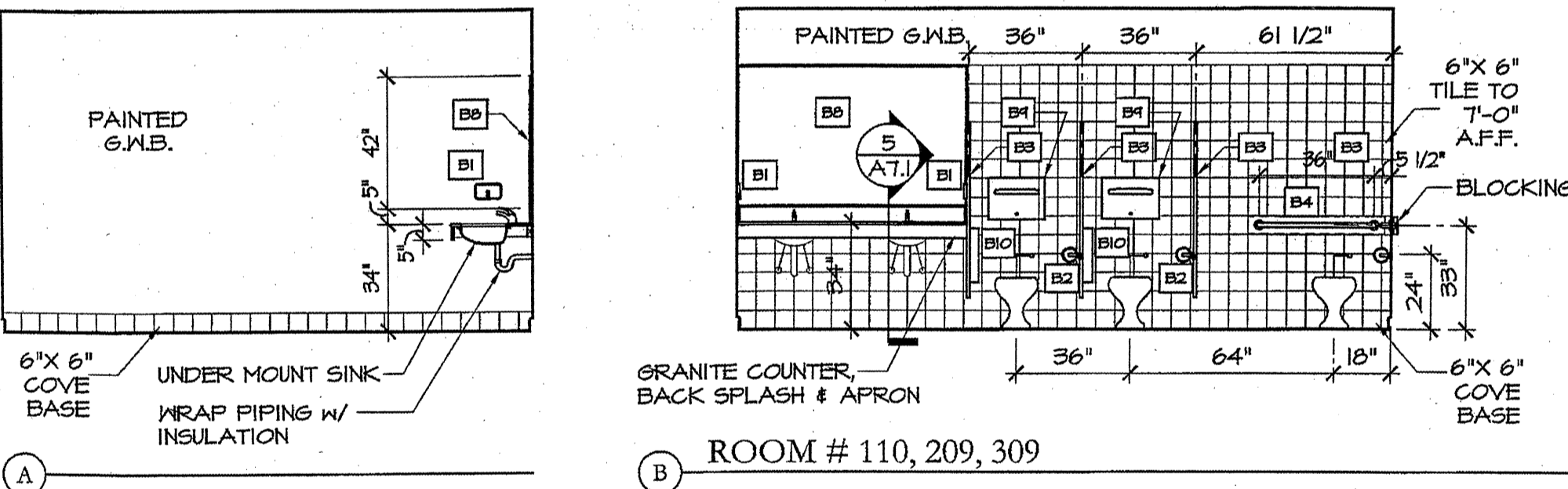
4 MEN'S ROOM ELEVATION - ROOM #107, 206, 306, 506

SCALE: 1/4" = 1'-0"



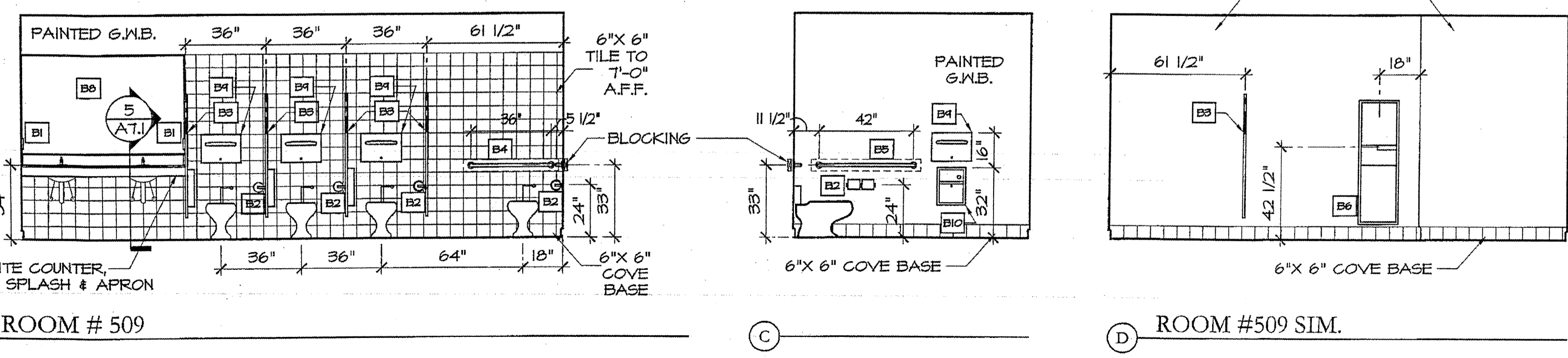
C

D



3 WOMEN'S ROOM ELEVATION - ROOM #110, 209, 309, 509

SCALE: 1/4" = 1'-0"



B ROOM # 509

C

D ROOM #509 SIM.

TOILET ACCESSORY SCHEDULE	
ITEM #	DESCRIPTION
B1	SOAP DISPENSER
B2	TOILET TISSUE HOLDER - 2 ROLL
B3	TOILET PARTITION
B4	36" GRAB BAR
B5	42" GRAB BAR
B6	SURFACE MOUNTED PAPER TOWEL DISPENSER & TRASH RECEPTACLE
B7	FIXED MIRROR
B8	TOILET SEAT COVER DISPENSER
B10	SANITARY NAPKIN DISPOSAL

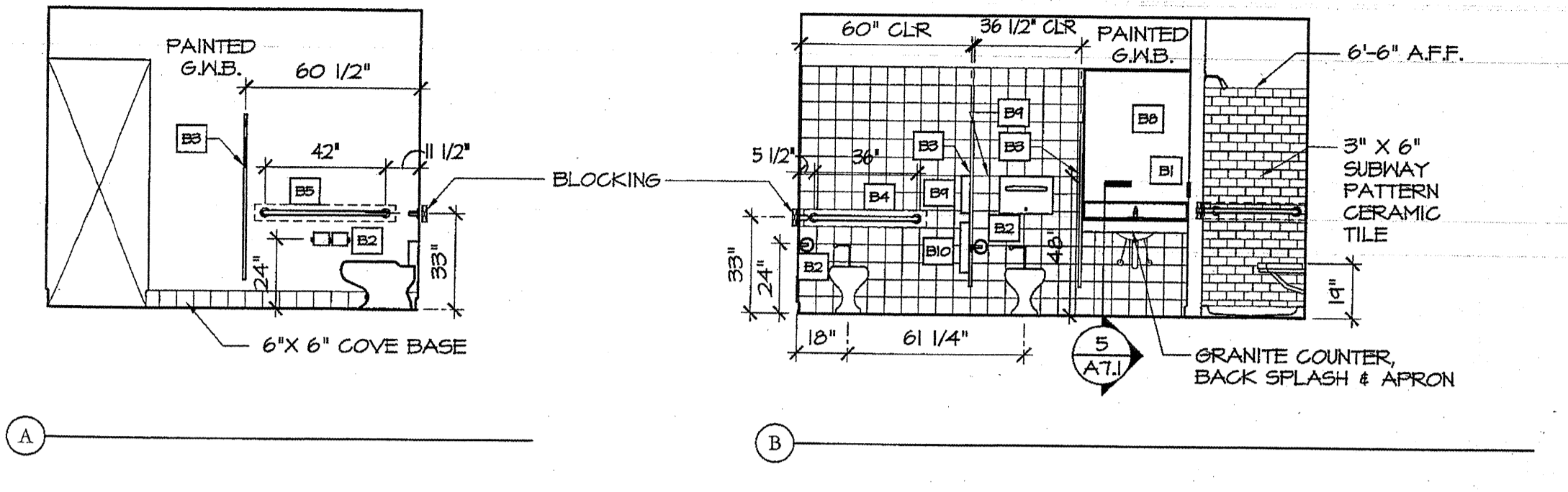
- NOTES
1. PROVIDE WOOD BLOCKING OR OTHER SOLID ATTACHMENT MATERIAL BEHIND GYPSUM BOARD PARTITIONS FOR ATTACHMENT OF ALL FIXTURES, FITTINGS AND ACCESSORIES
 2. GRAB BARS MUST BE ABLE TO RESIST A FULL FORCE OF 350 LBS. EXERTED AT ANY POINT IN ANY DIRECTION
 3. ALL MIRRORS TO BE SUPPORTED WITH A CONTINUOUS CHROME FULL WIDTH J-CHANNEL FASTENED TO WALL ABOVE BACKSPLASH
 4. REFER TO REFLECTED CEILING PLANS FOR ALL CEILING MATERIALS AND CEILING HEIGHTS
 5. LAVATORY FAUCET CONTROLS TO HAVE HOT AND COLD DESIGNATIONS PERMANENTLY AFFIXED TO THEM
 6. SEE SPECIFICATIONS FOR APPROVED MANUFACTURERS AND MODEL NUMBERS OF ALL TOILET/BATH ACCESSORIES

PROJECT # 30006
 REF. SHEET: A11
 SKETCH
 SK-A25
 03/14/07

CUSTOM HOUSE SQUARE
 PORTLAND, ME

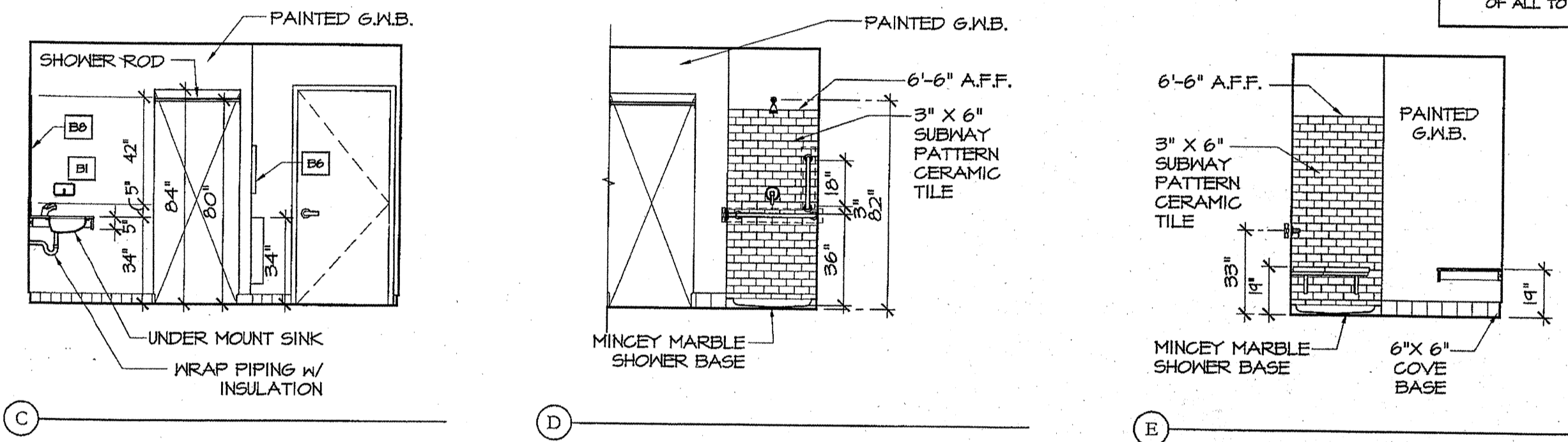
TYPICAL WOMEN'S RESTROOM INTERIOR ELEVATIONS

PRO CON INCORPORATED
 Design and Construction Management
 Architects



2 WOMEN'S ROOM ELEVATION - ROOM #014

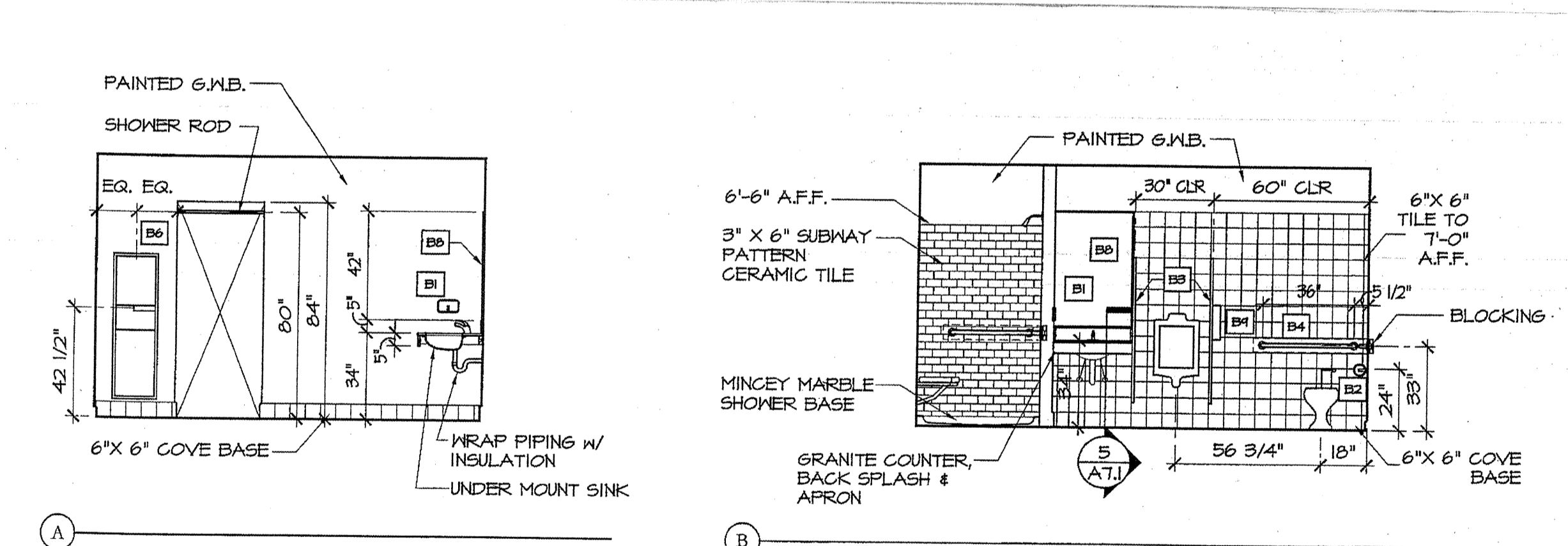
SCALE: 1/4" = 1'-0"



C

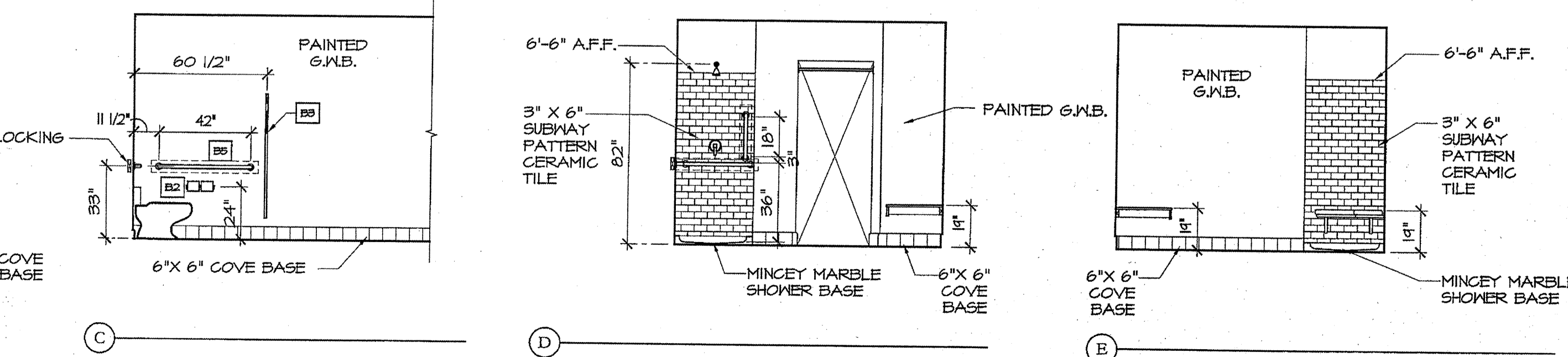
D

E



1 MEN'S ROOM ELEVATION - ROOM #013

SCALE: 1/4" = 1'-0"



C

D

E

PROJECT # 30006
 REF. SHEET: A11
 SKETCH
 SK-A22
 03/14/07

CUSTOM HOUSE SQUARE
 PORTLAND, ME

TYPICAL MEN'S RESTROOM INTERIOR ELEVATIONS

PRO CON INCORPORATED
 Design and Construction Management
 Architects

TOILET ACCESSORY SCHEDULE	
ITEM #	DESCRIPTION
B1	SOAP DISPENSER
B2	TOILET TISSUE HOLDER - 2 ROLL
B3	TOILET PARTITION
B4	36" GRAB BAR
B5	42" GRAB BAR
B6	SURFACE MOUNTED PAPER TOWEL DISPENSER & TRASH RECEPTACLE
B7	FIXED MIRROR
B8	TOILET SEAT COVER DISPENSER
B10	SANITARY NAPKIN DISPOSAL

- NOTES
1. PROVIDE WOOD BLOCKING OR OTHER SOLID ATTACHMENT MATERIAL BEHIND GYPSUM BOARD PARTITIONS FOR ATTACHMENT OF ALL FIXTURES, FITTINGS AND ACCESSORIES
 2. GRAB BARS MUST BE ABLE TO RESIST A FULL FORCE OF 350 LBS. EXERTED AT ANY POINT IN ANY DIRECTION
 3. ALL MIRRORS TO BE SUPPORTED WITH A CONTINUOUS CHROME FULL WIDTH J-CHANNEL FASTENED TO WALL ABOVE BACKSPLASH
 4. REFER TO REFLECTED CEILING PLANS FOR ALL CEILING MATERIALS AND CEILING HEIGHTS
 5. LAVATORY FAUCET CONTROLS TO HAVE HOT AND COLD DESIGNATIONS PERMANENTLY AFFIXED TO THEM
 6. SEE SPECIFICATIONS FOR APPROVED MANUFACTURERS AND MODEL NUMBERS OF ALL TOILET/BATH ACCESSORIES

PROJECT # 30006
 REF. SHEET: A11
 SKETCH
 SK-A20
 03/14/07

CUSTOM HOUSE SQUARE
 PORTLAND, ME

RESTROOM 014 INTERIOR ELEVATIONS

PRO CON INCORPORATED
 Design and Construction Management
 Architects

PROJECT # 30006
 REF. SHEET: A11
 SKETCH
 SK-A19
 03/14/07

CUSTOM HOUSE SQUARE
 PORTLAND, ME

RESTROOM 013 INTERIOR ELEVATIONS

PRO CON INCORPORATED
 Design and Construction Management
 Architects