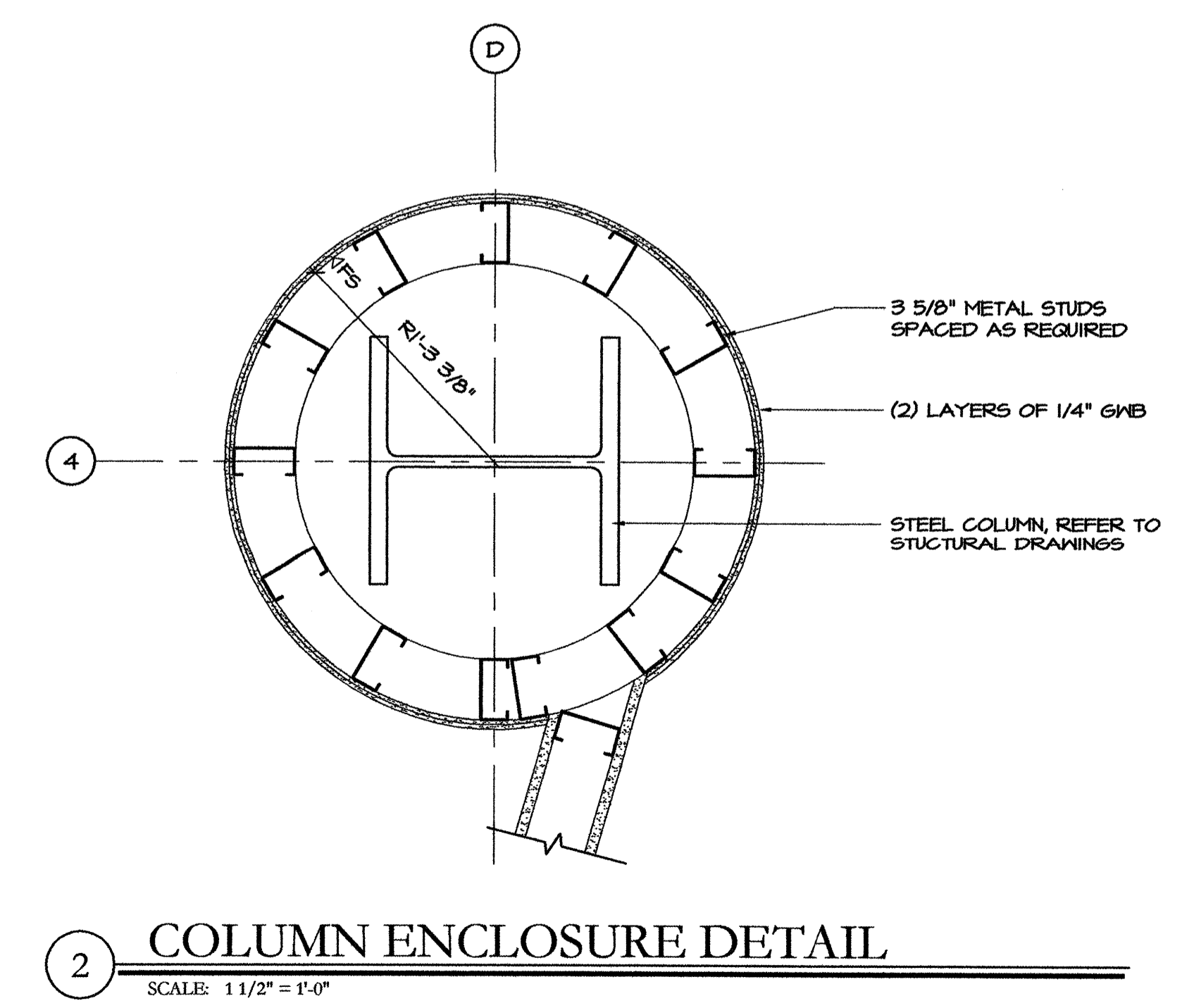
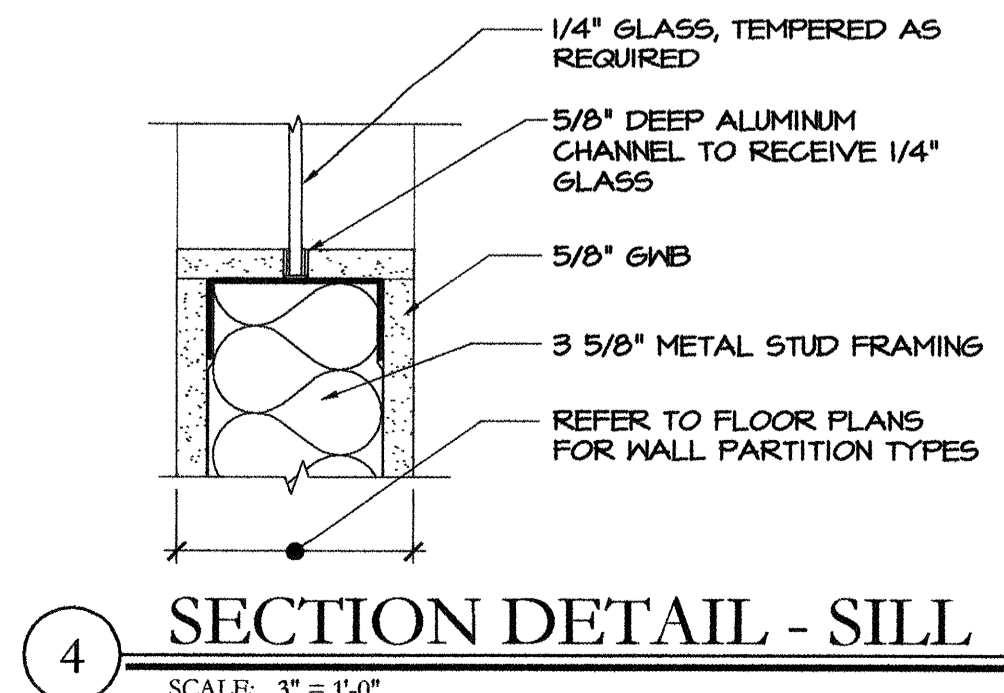
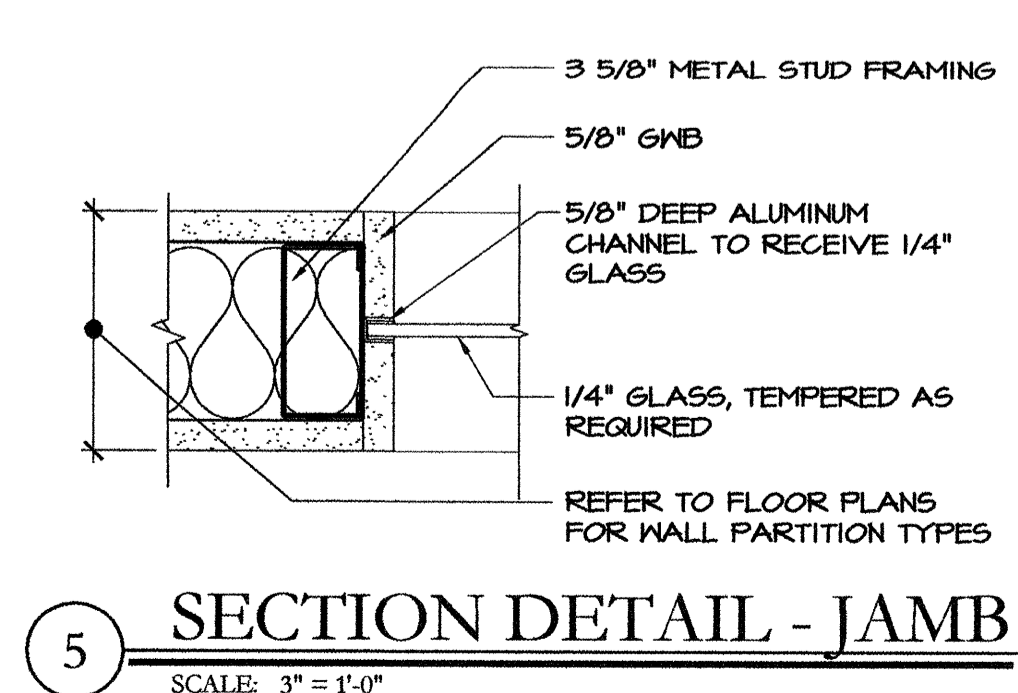
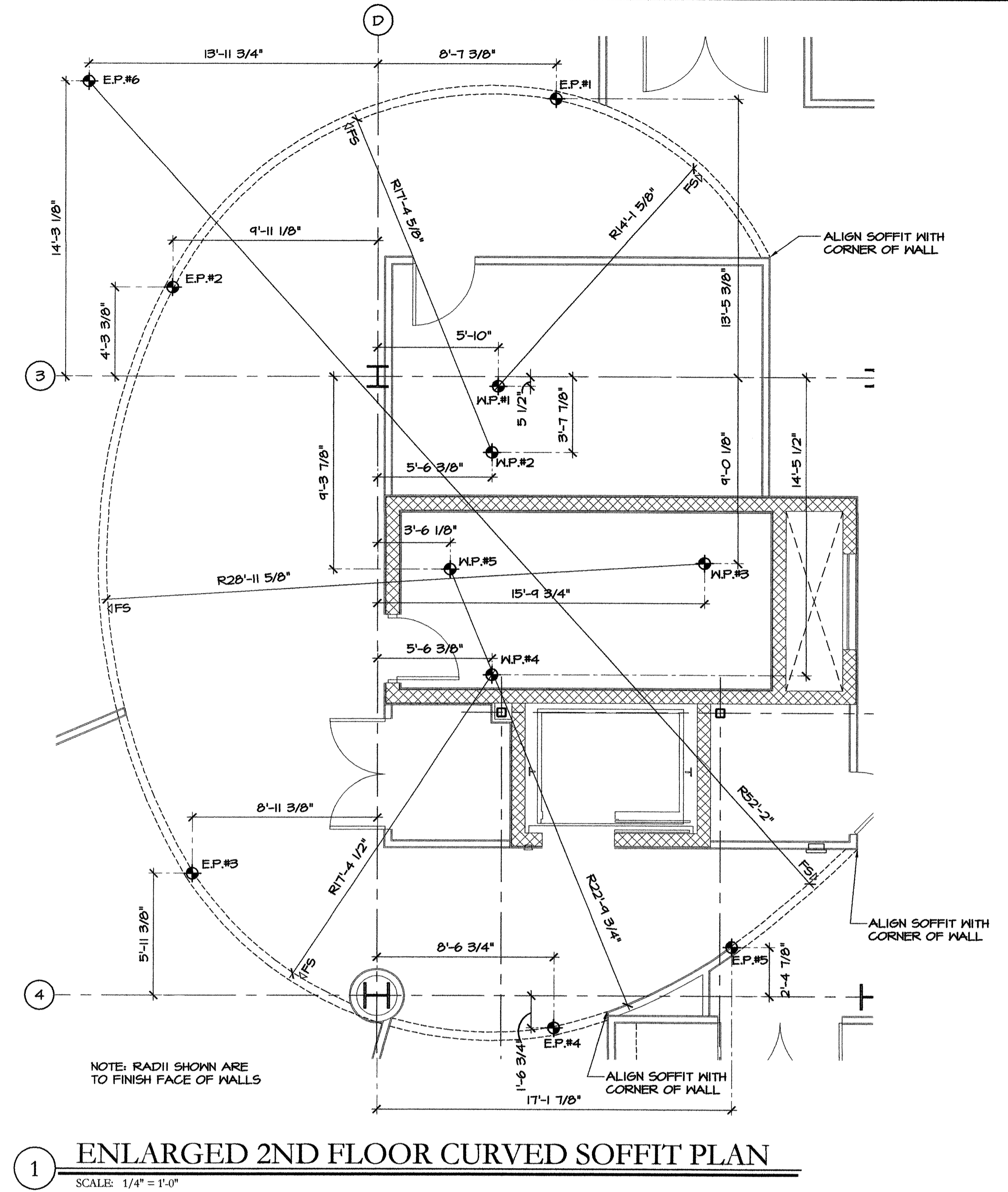
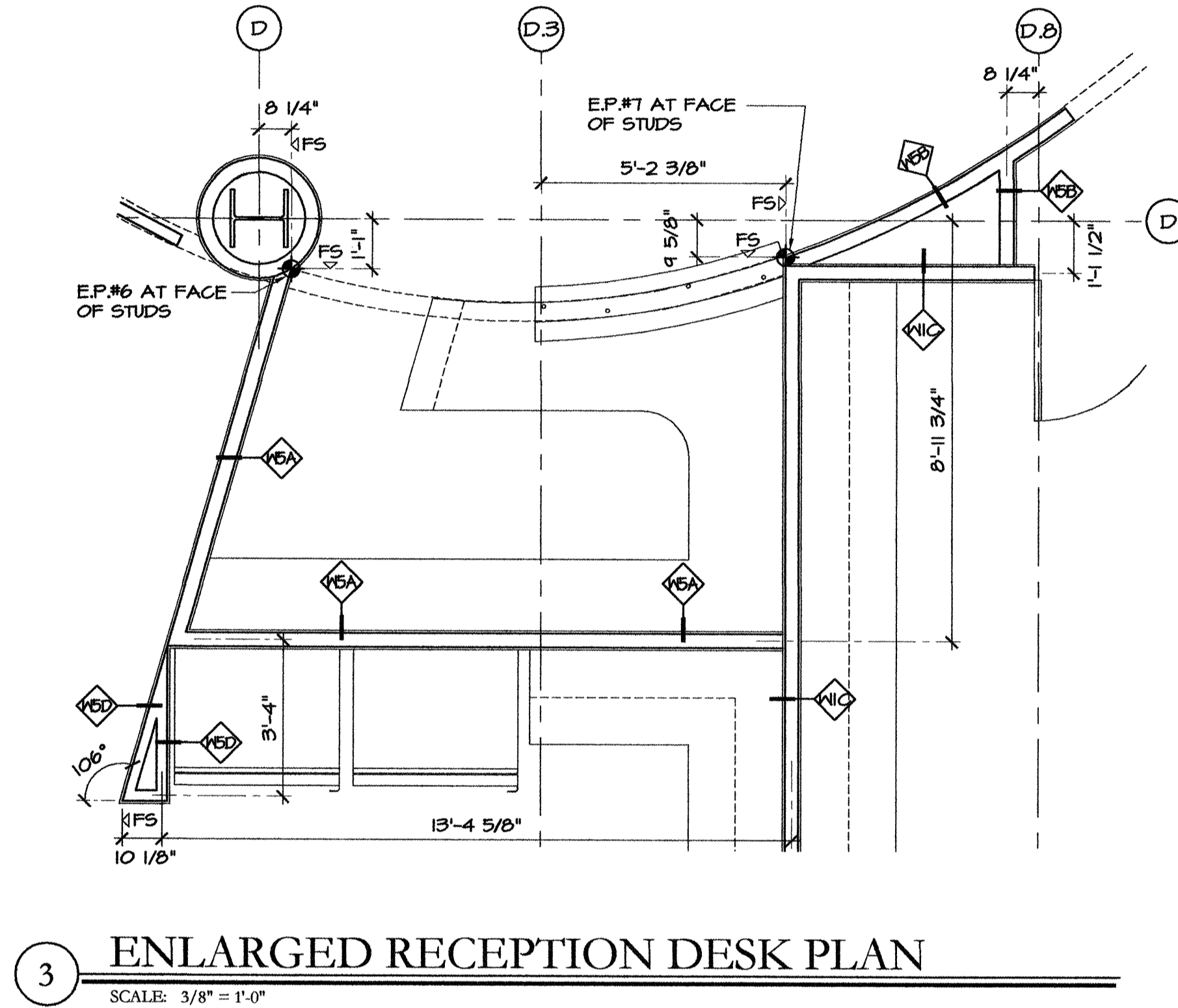


TENANT GENERAL NOTES

1. TENANT LAYOUT INFORMATION IS BASED ON PRELIMINARY DESIGN INFORMATION PROVIDED BY McMAHON ARCHITECTS ON JANUARY 10, 2007.
2. FIELD VERIFY ALL DIMENSIONS AND CONDITIONS. PROMPTLY NOTIFY THE ARCHITECT OF ANY ERRORS, OMISSIONS, INCONSISTENCIES OR OTHER PROBLEMS IMMEDIATELY UPON DISCOVERY, AND BEFORE PROCEEDING WITH THE WORK.
3. ALL INDICATIONS AND NOTATIONS ON THE DRAWINGS APPLYING TO ONE AREA, COMPONENT OR CONDITIONS, SHALL APPLY TO ALL OTHER SIMILAR AREAS, COMPONENTS UNLESS CLEARLY INDICATED OTHERWISE.
4. DIMENSIONS ARE TAKEN FROM COLUMN CENTER LINE AND FROM PARTITION CENTER LINE. CLEAR DIMENSIONS ARE TO THE FINISHED FACE OF NEW CONSTRUCTION AND SHALL TAKE PRECEDENCE OVER ANY OTHER DIMENSION.
5. DOORS ARE LOCATED 4" FROM THE CORNER OF WALL UNLESS NOTED OTHERWISE.
6. REFER TO SHEET A4.60 & A4.61 FOR WALL PARTITION TYPES AND RATED ASSEMBLIES.
7. TENANT WALL PARTITIONS TO BE TYPE WSA UNLESS NOTED OTHERWISE. SEE SHEET A4.60 FOR WALL PARTITION TYPES.
8. TENANT STORAGE ROOMS ARE TO BE WALL PARTITION TYPE WIG UNLESS NOTED OTHERWISE. SEE SHEET A4.60 FOR WALL PARTITION TYPES.
9. TENANT DOORS ARE TO BE FLAT SOLID CORE WOOD DOORS IN HOLLOW METAL FRAMES.
10. REFER TO SHEETS A6.0 - A6.5 FOR INTERIOR FINISH PLANS BY McMAHON ARCHITECTS, INC.
11. REFER TO SHEETS A7.1 - A7.3 FOR MILLWORK DETAILS BY McMAHON ARCHITECTS, INC.



PRO CON
INCORPORATED
Design and Construction Management
ARCHITECTURE
A Professional Corporation
P.O. Box 444, Portland, ME 04108
603.622.8811 Fax: 603.622.7290

ISSUE 02/15/07: ISSUED TENANT FIT-UP DRAWINGS

CUSTOM HOUSE SQUARE
300 FORE STREET
PORTLAND, MAINE
ENLARGED PLANS AND DETAILS

PROJECT ARCHITECT: MW
DRAWN BY: SO
PROJECT #: 300506
A8.20