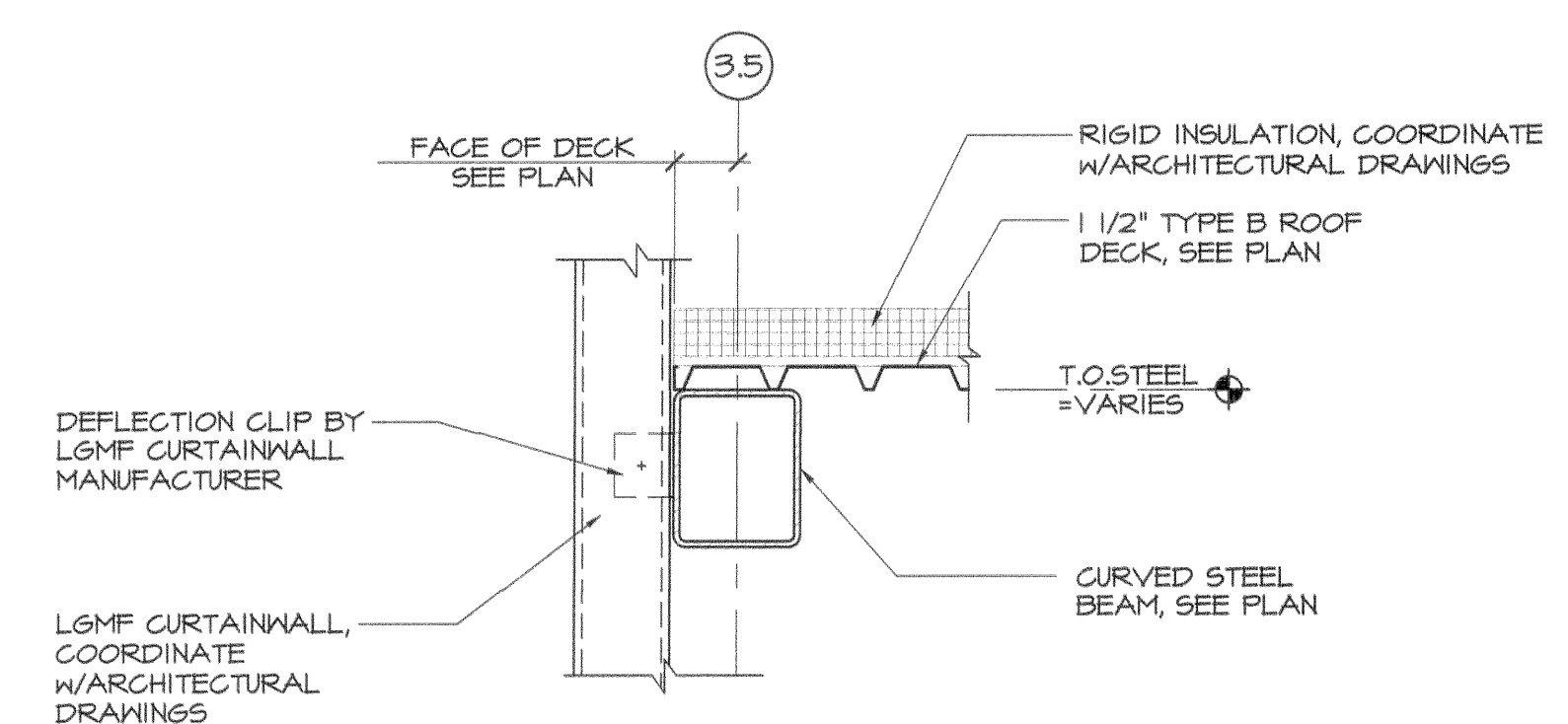


**CURVED ROOF FRAMING PLAN**

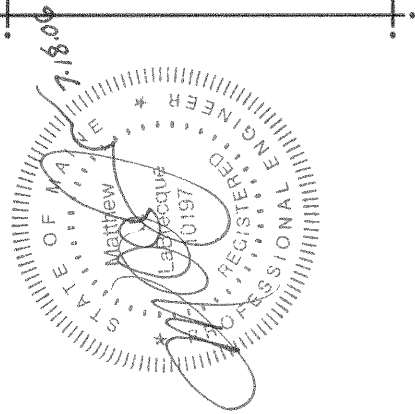
SCALE: 1/8" = 1'-0"

- NOTES:**
1. ROOF IS 1 1/2" TYPE B 20 GAUGE GALVANIZED STEEL DECK. DECK MUST EXTEND OVER A MINIMUM OF (3) SPANS (TYP).
  2. BEAM FRAMING ON PLAN DESIGNATED AS "R" INDICATES BEAM IS CURVED WITH A RADIUS OF 83'-2" TO BOTTOM OF BEAM.  
MANUFACTURER NOTE: SPLICING OF CURVED BEAM PERMITTED.
  3. L4x4x3/8 RTU FRAMES MUST BE PROVIDED AT ALL RTUS. GENERAL CONTRACTOR TO COORDINATE SIZE AND LOCATION OF ALL RTU FRAMES WITH THE REQUIREMENTS SET FORTH ON THE ARCHITECTURAL AND MECHANICAL DRAWINGS.
  4. L3x3x1/4 FRAMES MUST BE PROVIDED IN ALL LOCATIONS, WHERE ROOF PENETRATIONS EXCEED 10" IN DIAMETER. UTILIZE L4x4x3/8 FRAMES WHERE UNITS ARE SUPPORTED AS INDICATED IN RTU FRAME NOTE ABOVE.
  5. SEE COLUMN SCHEDULE ON SHEET S4.1 FOR STRUCTURAL STEEL COLUMN DETAILING.
  6. SEE SHEET S0.1 FOR STRUCTURAL GENERAL NOTES.



**1 ROOF EDGE DETAIL**

SCALE: 1" = 1'-0"



ISSUE 05/26/2006 - ISSUED FOR PRICING  
07/11/2006 - ISSUED FOR PERMIT

**CUSTOM HOUSE SQUARE**  
300 FORE STREET  
PORTLAND, MAINE  
**CURVED ROOF FRAMING PLAN**

PROJECT ARCHITECT: MW  
DRAWN BY: BR, AC, SO  
PROJECT #: 300506

**S2.7**