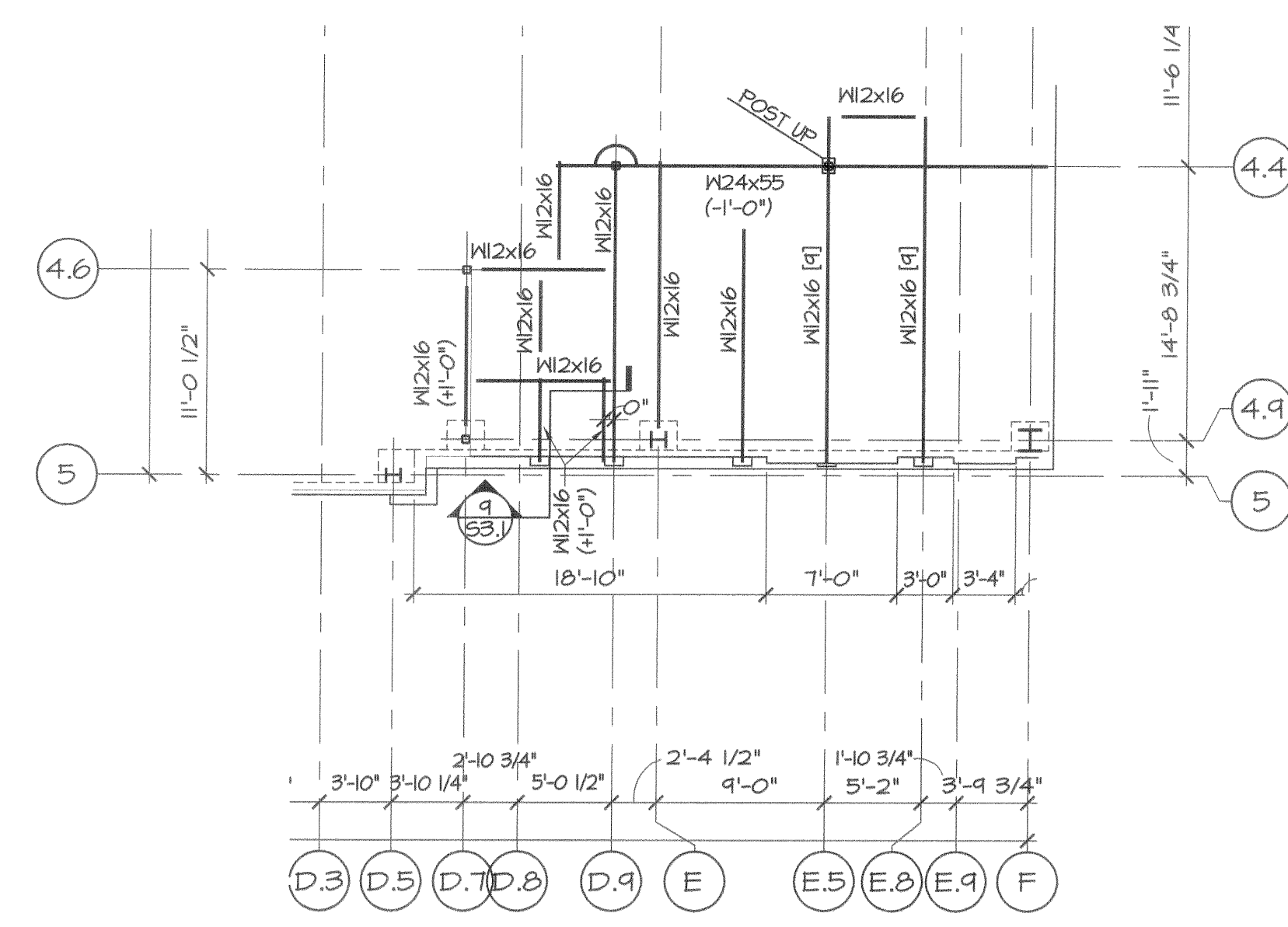
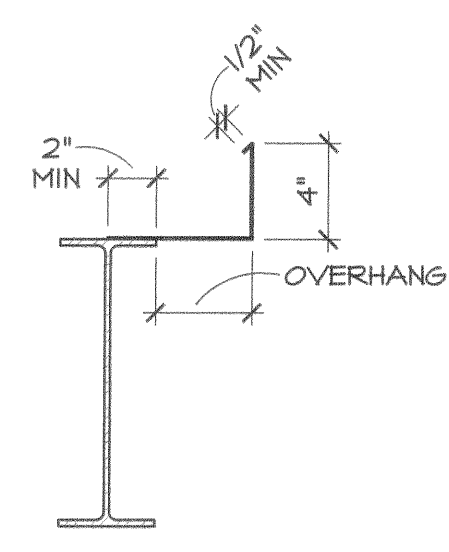


scorrell - Fri, 14 Jul 2006 - 1:27pm

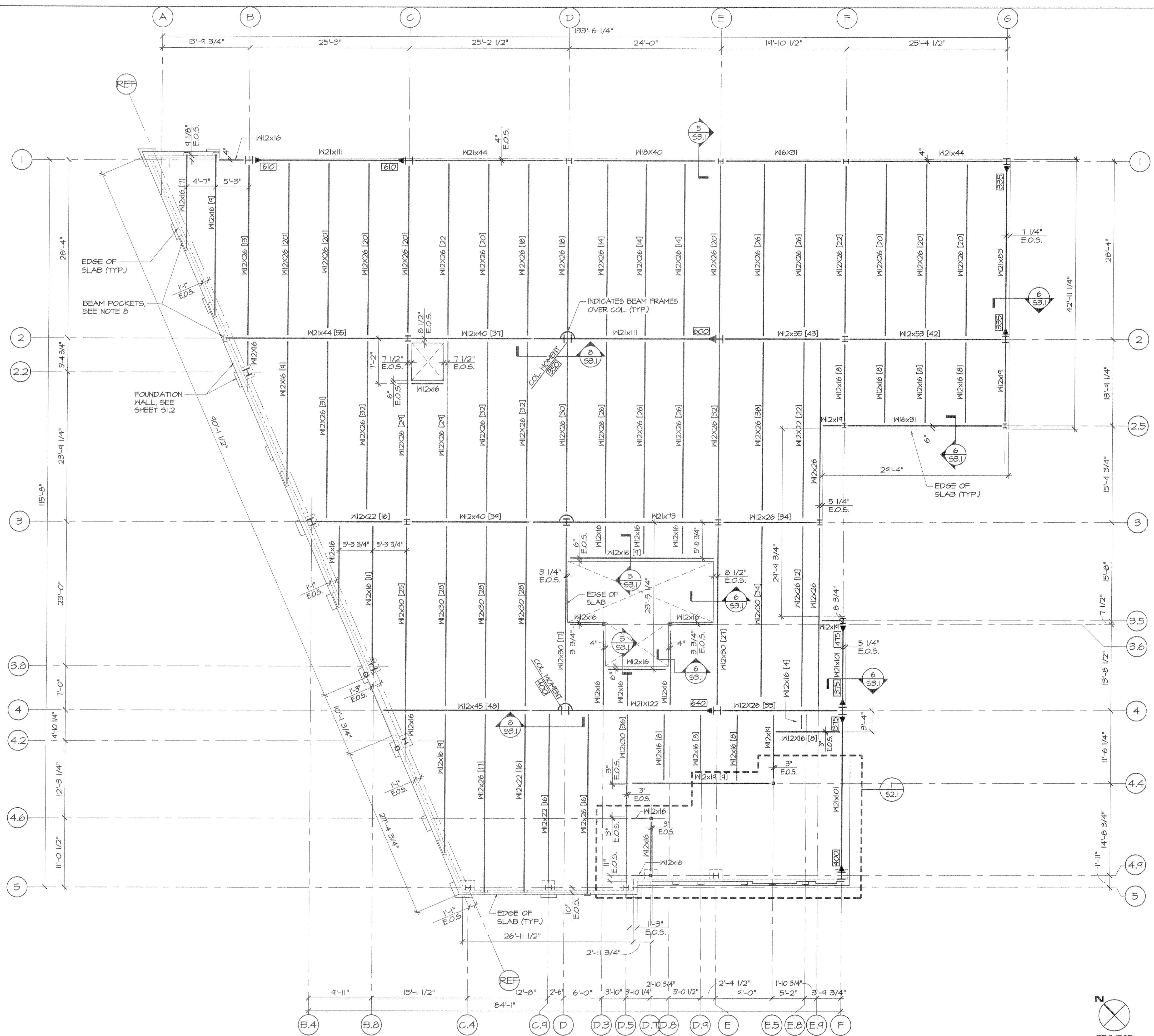


**1 INTERMEDIATE FLOOR FRAMING PLAN**  
SCALE: 1/8" = 1'-0"

- NOTES:**
1. TOP OF SLAB @ INTERMEDIATE FLOOR = 10'-4"
  2. TOP OF STEEL = 10'-0" (UNLESS NOTED AS +/- FROM THIS ELEVATION ON PLAN)



OVERHANG	POUR STOP GAUGE
UP TO 5"	10
5" TO 6"	16
6" TO 7"	14
OVER 7"	STRUC. STEEL



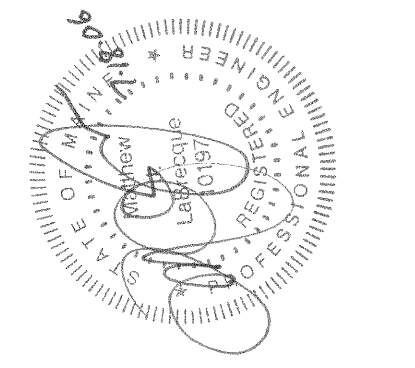
**FIRST FLOOR FRAMING PLAN**  
SCALE: 1/8" = 1'-0"

- NOTES:**
1. FLOOR IS 4" (3000 PSI) NORMAL WEIGHT CONCRETE SLAB W/6X6 W/4XW/4 W/WR ON 1 1/2" LOK-FLOOR 20 GAUGE GALVANIZED COMPOSITE STEEL DECK. DECK MUST EXTEND OVER A MINIMUM OF (3) SPANS (TYP).
  2. TOP OF SLAB = 22'-7 1/2"
  3. TOP OF STEEL = 22'-3 1/2" (UNLESS NOTED AS +/- FROM THIS ELEVATION ON PLAN)
  4. [X] INDICATES NUMBER OF 3/4" x 3" SHEAR STUDS (FU = 60KSI) WELDED TO BEAM THROUGH COMPOSITE DECK

5. DESIGN REACTIONS FOR COMPOSITE BEAMS HAVE BEEN INDICATED AT VARIOUS LOCATIONS ON PLAN. THE STRUCTURAL STEEL FABRICATOR MUST DESIGN THE BEAM FOR THE GREATER OF THE FOLLOWING:
  - a. REACTION INDICATED ON PLAN
  - b. MAXIMUM REACTION BASED ON UNIFORM LOAD CAPACITY OF BEAM AT GIVEN SPAN PER AISC ASD 9TH EDITION
6. SEE COLUMN SCHEDULE ON SHEET 54.1 FOR STRUCTURAL STEEL COLUMN DETAILING.

7. \* DESIGNATES MOMENT CONNECTION. STRUCTURAL STEEL FABRICATOR MUST PROVIDE A CERTIFIED CONNECTION DESIGN BY AN ENGINEER LICENSED IN THE STATE OF MAINE TO MEET THE DESIGN MOMENT CONNECTION VALUES NOTED AS [XXX] FT-KIPS ON PLAN. SAID MOMENT CONNECTION DESIGN MUST NOT EXCEED 100% OF THE REQUIRED DESIGN VALUE.
8. PROVIDE POCKETS IN CONCRETE FOUNDATION WALLS, SEE SHEET 51.2
9. SEE SHEET 50.1 FOR STRUCTURAL GENERAL NOTES

**PRO CON INCORPORATED**  
ARCHITECTURE  
Design and Construction Management  
A Seabrook Company  
1700 Main Street, Suite 200  
Portland, ME 04103  
Tel: 603.883.1234



ISSUE:  
05/26/2006 - ISSUED FOR PRICING  
07/11/2006 - ISSUED FOR PERMIT

**CUSTOM HOUSE SQUARE**  
300 FORE STREET  
PORTLAND, MAINE  
FIRST FLOOR FRAMING PLAN

PROJECT ARCHITECT:  
MW

DRAWN BY:  
BR, AC, SO

PROJECT #:  
300506

**S2.1**