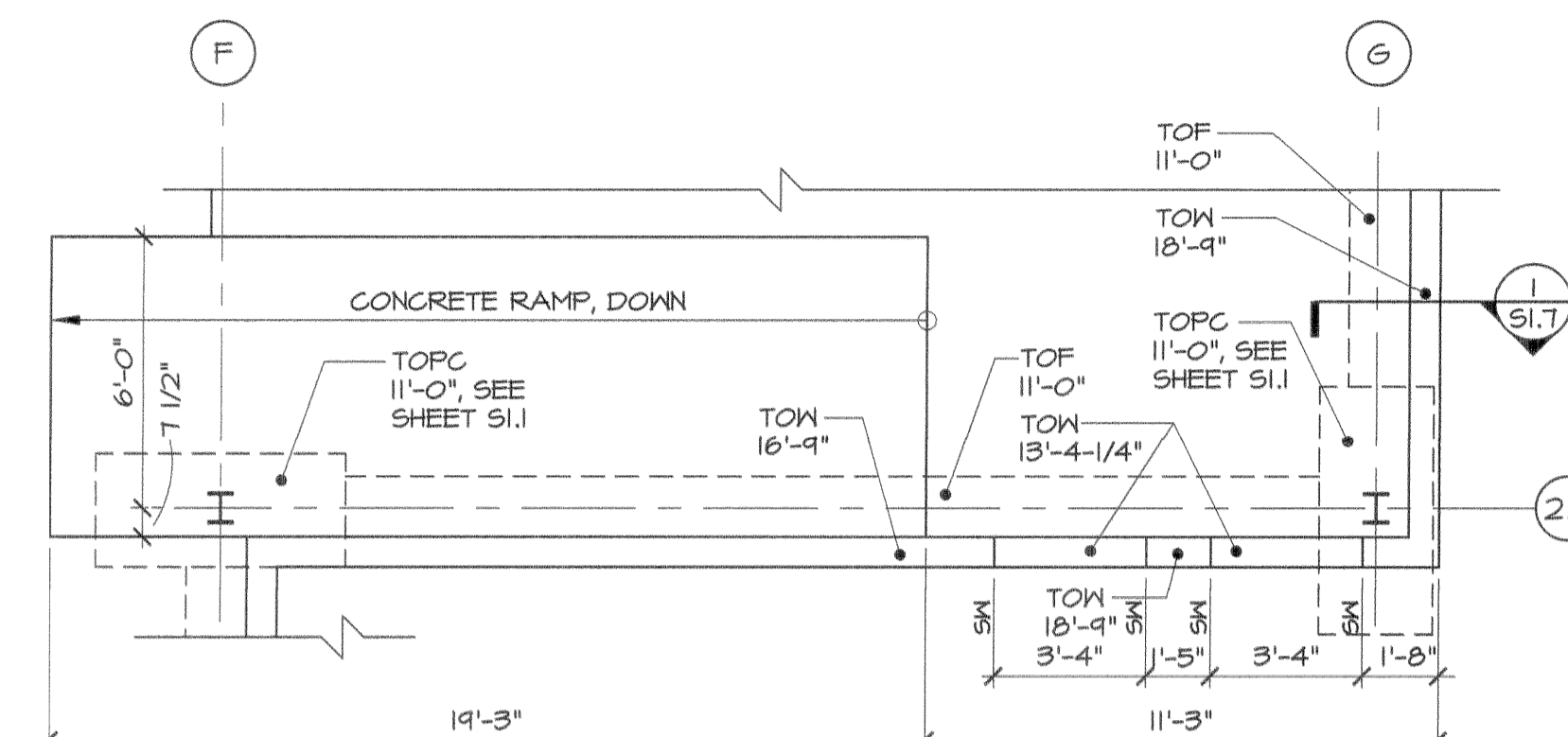
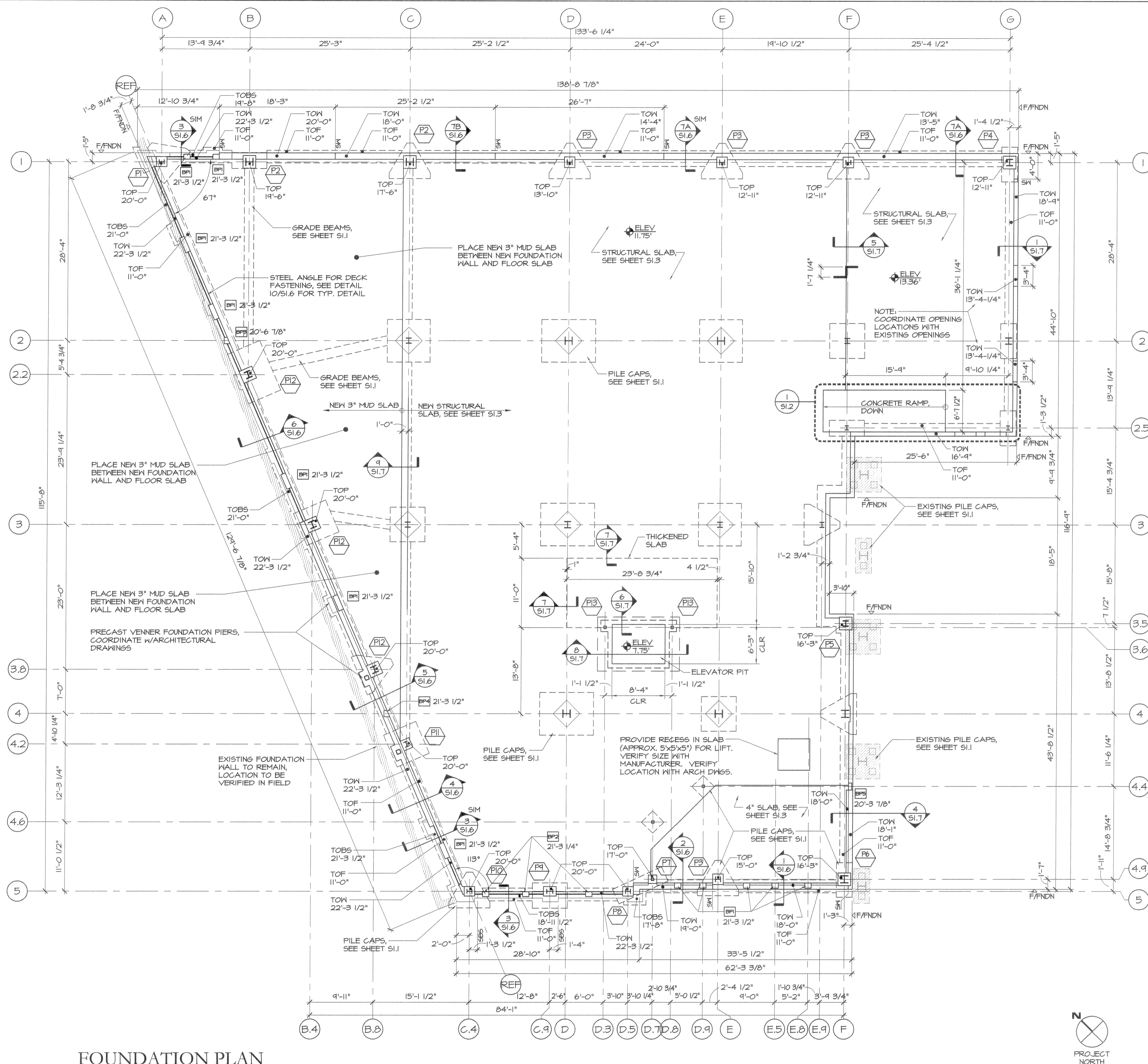
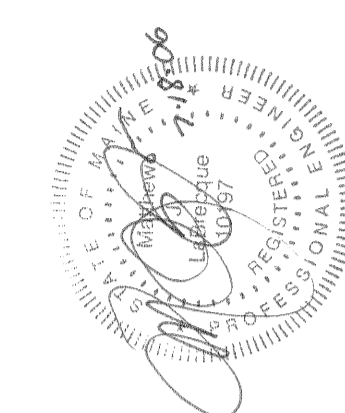


sonell - Fri, 14 Jul 2006 - 10:30am



**1 ENLARGED PLAN**  
 SCALE: 1/4" = 1'-0"

**BEARING PLATE SCHEDULE**

MARK	SIZE (W x D x T)
BP1	6" x 4" x 1/2"
BP2	8 1/2" x 4" x 5/8"
BP3	8 1/2" x 6" x 3/4"
BP4	10" x 4" x 1"
BP5	12" x 6" x 3/4"

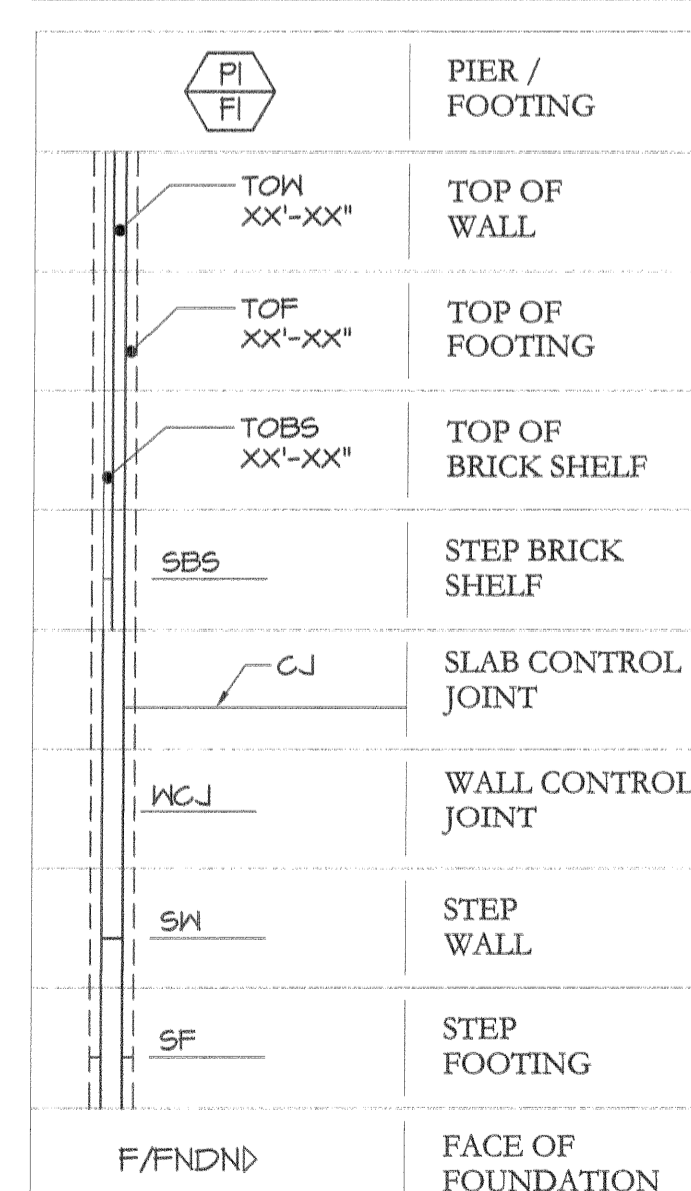
1. REFER TO 11/SI.6 FOR TYPICAL DETAIL  
 2. TOP OF BASE PLATE ELEVATION NOTED WITH BASE PLATE MARK ON PLAN

**PIER SCHEDULE**

MARK	SIZE	REINFORCING	DETAIL
P1	1'-6" x 1'-8"	(6)-#7 VERT	1/SI.5
P2	2'-0" x 2'-0"	(8)-#8 VERT	2/SI.5
P3	1'-8" x 1'-8"	(6)-#7 VERT	3/SI.5
P4	2'-0" x 2'-0"	(8)-#7 VERT	4/SI.5
P5	2'-0" x 2'-0"	(8)-#7 VERT	4/SI.5
P6	2'-0" x 2'-0"	(6)-#8 VERT	11/SI.5
P7	1'-4" x 1'-4"	(4)-#6 VERT	12/SI.5
P8	1'-6" x 1'-8"	(4)-#6 VERT	13/SI.5
P9	1'-6" x 2'-0"	(8)-#7 VERT	14/SI.5
P10	1'-6" x 1'-8"	(6)-#6 VERT	15/SI.5
P11	1'-6" x 1'-8"	(6)-#6 VERT	16/SI.5
P12	2'-0" x 2'-0"	(8)-#7 VERT	17/SI.5
P13	1'-4" x 1'-4"	(4)-#6 VERT	--

SEE TYPICAL PIER TIE DETAILS SHEET SI.5

**SYMBOLS LEGEND:**



**FOUNDATION PLAN**

SCALE: 1/8" = 1'-0"

- NOTES:**
- SEE SHEET SI.1 FOR PILE AND PILE CAP INFORMATION
  - SEE SHEET SI.1 FOR ADDITIONAL INFORMATION
  - PROVIDE POCKETS IN CONCRETE FOUNDATION WALLS FOR ALL STEEL BEAM BEARING PLATES SHOWN. A MINIMUM WALL THICKNESS OF 2" MUST BE MAINTAINED BEHIND THE POCKET, WITH A MAXIMUM DIMENSION OF 2" AROUND THE BEARING PLATE TO THE EXTENTS OF THE POCKET. VOLUME OF WALL OCCUPIED BY POCKET MUST BE FILLED WITH CONCRETE AFTER BEAM INSTALLATION

**CUSTOM HOUSE SQUARE**  
 300 FORE STREET  
 PORTLAND, MAINE  
**FOUNDATION PLAN**

PROJECT ARCHITECT:  
**MW**  
 DRAWN BY:  
**AC, SO**  
 PROJECT #:  
**300506**

**S1.2**