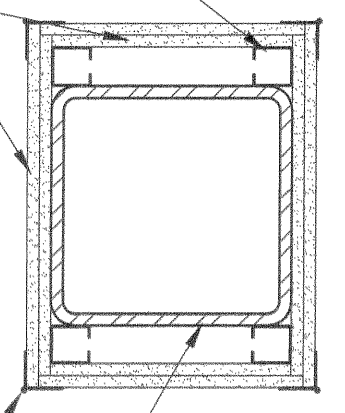


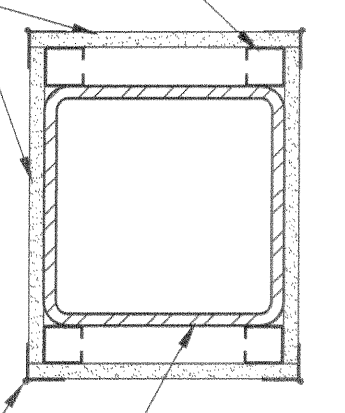
sonell - Mon, 17 Jul 2006 - 1:25pm

1-5/8" WIDE WITH 1-5/16" AND 1-7/16" LEGS HAVING A 1/4" FOLDED FLANGE, FABRICATED FROM NO. 25 M56 GALV STEEL. LENGTH TO BE 1/2" LESS THAN ASSEMBLY HEIGHT



FOR (1) HOUR RATING, 1/2" OR 5/8" THICK, TYPE 'X' GYPSUM WALLBOARD. FOR ATTACHING FIRST LAYER OF TYPE 'X' WALLBOARD TO STEEL STUDS WITH NO. 6 BY 1" LONG PHILLIPS HEAD SELF-DRILLING, SELF-TAPPING DOUBLE LEAD SCREWS SPACED 24" O/C FOR ATTACHING SECOND LAYER OF WALLBOARD TO STEEL STUDS WITH NO. 6 BY 1-3/4" LONG PHILLIPS HEAD STEEL SCREWS SELF-DRILLING, SELF-TAPPING, SPACED 12" O/C TOTAL G.W.B. THICKNESS IS 1 1/2" MIN.

1-5/8" WIDE WITH 1-5/16" AND 1-7/16" LEGS HAVING A 1/4" FOLDED FLANGE, FABRICATED FROM NO. 25 M56 GALV STEEL. LENGTH TO BE 1/2" LESS THAN ASSEMBLY HEIGHT



FOR 1 HOUR RATING, 5/8" THICK, TYPE 'X' GYPSUM WALLBOARD. FOR ATTACHING FIRST LAYER OF TYPE 'X' WALLBOARD TO STEEL STUDS WITH NO. 6 BY 1" LONG PHILLIPS HEAD SELF-DRILLING, SELF-TAPPING DOUBLE LEAD SCREWS SPACED 24" O/C FOR ATTACHING TOTAL G.W.B. THICKNESS IS 5/8" MIN.

CORNER BEADS NO. 28 M56 GALV. STEEL 1-1/4" LEGS, ATTACHED TO GYPSUM BOARD WITH NO. 6 BY 1" SCREWS SPACED 12" O/C MAXIMUM

CORNER BEADS NO. 28 M56 GALV. STEEL 1-1/4" LEGS, ATTACHED TO GYPSUM BOARD WITH NO. 6 BY 1" SCREWS SPACED 12" O/C MAXIMUM

STEEL COLUMN, REFER TO STRUCTURAL DRAWINGS FOR ACTUAL SIZE, MIN. TS 8x8x.250

STEEL COLUMN, REFER TO STRUCTURAL DRAWINGS FOR ACTUAL SIZE, MIN. TS 4x4x.100

TYPICAL 1 HR RATED TUBE STEEL COLUMN

C3	FIRE RATINGS: 1 HR.	DESIGN: UL# X528
	S.T.C. RATINGS: N/A	CORNER DTL. 'B'

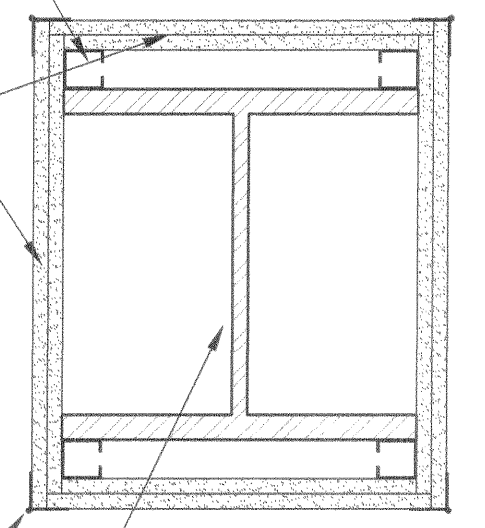
1 HR RATED TUBE STEEL COLUMN

C2	FIRE RATINGS: 1 HR.	DESIGN: UL# X528
	S.T.C. RATINGS: N/A	CORNER DTL. 'A'

TYPICAL WIDE FLANGE COLUMN

C1	FIRE RATINGS: 2 HR.	DESIGN: UL# X528
	S.T.C. RATINGS: N/A	
C1A	FIRE RATINGS: 1 HR.	DESIGN: UL# X528
	(1) LAYER OF 5/8" TYPE 'X' G.W.B.	

1-5/8" WIDE WITH 1-5/16" AND 1-7/16" LEGS HAVING A 1/4" FOLDED FLANGE, FABRICATED FROM NO. 25 M56 GALV STEEL. LENGTH TO BE 1/2" LESS THAN ASSEMBLY HEIGHT



FOR 1 HOUR RATING, 5/8" THICK, TYPE 'X' GYPSUM WALLBOARD. FOR ATTACHING FIRST LAYER OF TYPE 'X' WALLBOARD TO STEEL STUDS WITH NO. 6 BY 1" LONG PHILLIPS HEAD SELF-DRILLING, SELF-TAPPING DOUBLE LEAD SCREWS SPACED 24" O/C FOR ATTACHING SECOND LAYER OF WALLBOARD TO STEEL STUDS WITH NO. 6 BY 1-3/4" LONG PHILLIPS HEAD STEEL SCREWS SELF-DRILLING, SELF-TAPPING, SPACED 12" O/C TOTAL G.W.B. THICKNESS FOR 1 HOUR RATING IS 1 1/2" AND FOR 2 HOUR RATING IS 1-1/8"

CORNER BEADS NO. 28 M56 GALV. STEEL 1-1/4" LEGS, ATTACHED TO GYPSUM BOARD WITH NO. 6 BY 1" SCREWS SPACED 12" O/C MAXIMUM

STEEL COLUMN, REFER TO STRUCTURAL DRAWINGS FOR ACTUAL SIZE, MIN. W10x49

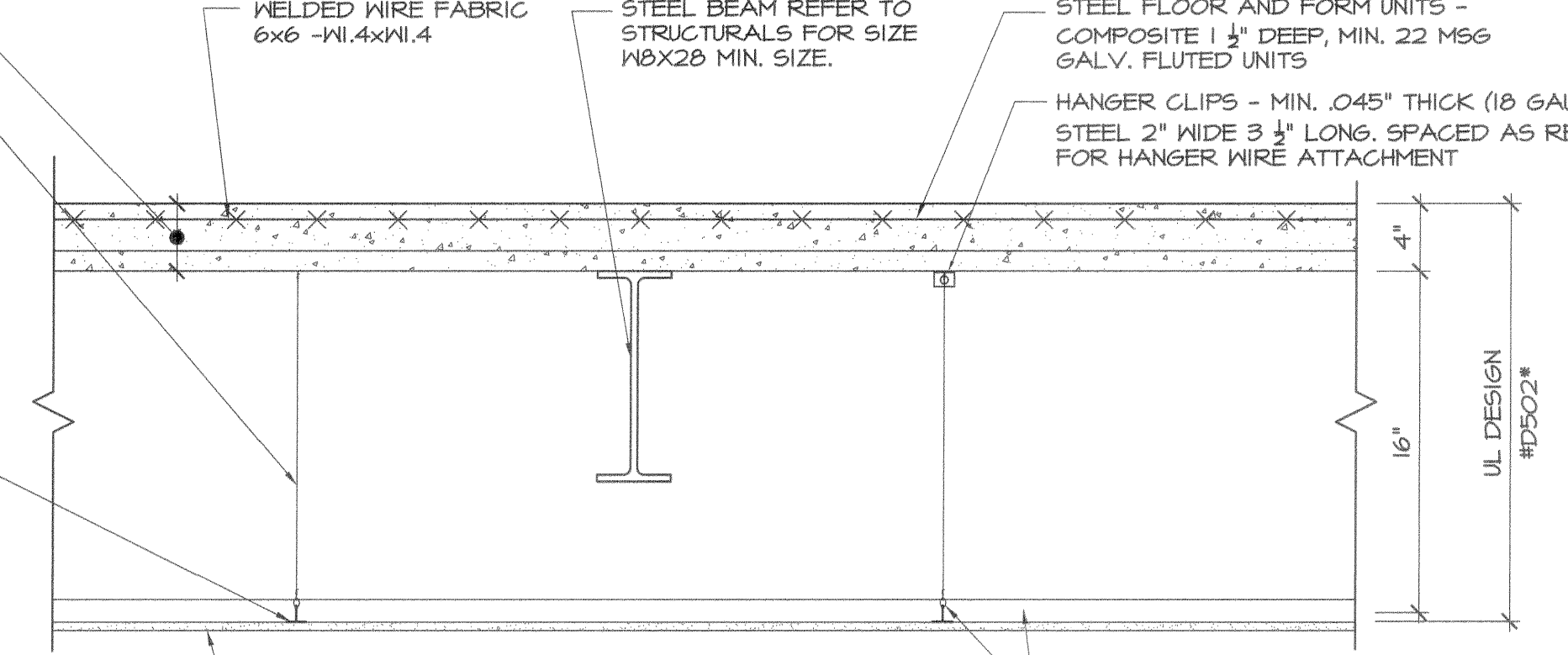
ACOUSTICAL MATERIAL - NOMINAL 5/8 OR 3/4 IN. THICK LAY-IN PANELS IN A NOMINAL PANEL SIZE.

HOLD DOWN CLIPS - NO. 28 M56 SPRING STEEL. WHEN CEILING IS COMPOSED OF NOMINAL 24 x 24 IN. LAY-IN PANELS, ONE CLIP PLACED OVER THE BULB OF CROSS TEE NEAR CROSS TEE MID POINT. WHEN CEILING IS COMPOSED OF 24 x 48 IN. LAY-IN PANELS, TWO CLIPS PLACED OVER BULB OF EACH CROSS TEE NEAR CROSS TEE QUARTER POINT.

FLOOR/CEILING ASSEMBLY

F1	FIRE RATINGS: 1 HR.	DESIGN: UL #D216
	S.T.C. RATING: N/A	

4" 3000 PSI NORMAL WEIGHT (150 PCF) CONG. SLAB



HANGER WIRE - NO 12 SWS GALV. STEEL ATTACHED TO HANGER CLIPS. HANGER WIRES SPACED AT 48" O.C. ON MAIN RUNNERS. ONE HANGER WIRE TO OCCUR AT ALL FOUR CORNERS OF LIGHT FIXTURES. ADDITIONAL HANGER WIRE REQUIRED AT THE MIDSPAN OF CROSS TEES RUNNING PARALLEL AND NEAREST TO THE WALLS AND NEAR THE END OF CUT CROSS TEES LONGER THAN 23 IN. WHICH ABUT THE WALLS.

SCREWS - NO. 6 PHILLIPS-TYPE, TYPE S SELF-DRILLING AND SELF-TAPPING, MIN 1" LONG STEEL DRYWALL SCREWS. SCREW HEADS MAY BE EITHER EXPOSED OR COVERED WITH JOINT CEMENT.

5/8" THICK TYPE 'C', 4" WIDE, INSTALLED WITH LONG DIMENSION PERP. TO CROSS TEES WITH END JOINTS CENTERED ALONG CROSS TEES AND WITH SIDE JOINTS CENTERED ALONG MAIN RUNNERS. GYPSUM BD FASTENED TO EA. CROSS TEE WITH FIVE STEEL DRYWALL SCREWS WITH ONE SCREW LOCATED AT THE MIDSPAN OF THE CROSS TEE, ONE SCREW LOCATED 12" FROM AND ON EACH SIDE OF THE CROSS TEE MIDSPAN AND ONE SCREW LOCATED 1 1/2" FROM EA. GYPSUM BD. JOINT. EXCEPT AT GYPSUM BOARD END JOINTS, STEEL DRYWALL SCREWS SHALL BE LOCATED ON ALTERNATING SIDES OF CROSS TEE FLANGE. AT GYPSUM BOARD END JOINTS, STEEL DRYWALL SCREWS SHALL BE LOCATED 1/2" FROM THE JOINT. GYPSUM BOARD FASTENED TO MAIN RUNNERS WITH STEEL DRYWALL SCREWS, 3/8 TO 12" FROM SIDE JOINTS, MIDWAY BETWEEN INTERSECTIONS WITH CROSS TEES (24" O.C.). END JOINTS OF ADJACENT GYPSUM BOARD SHEETS SHALL BE STAGGERED NOT LESS THAN 4" O.C. GYPSUM BOARD SHEETS SCREEN-ATTACHED TO FLANGE OF WALL CHANNEL WITH STEEL DRYWALL SCREWS SPACED 12" O.C.

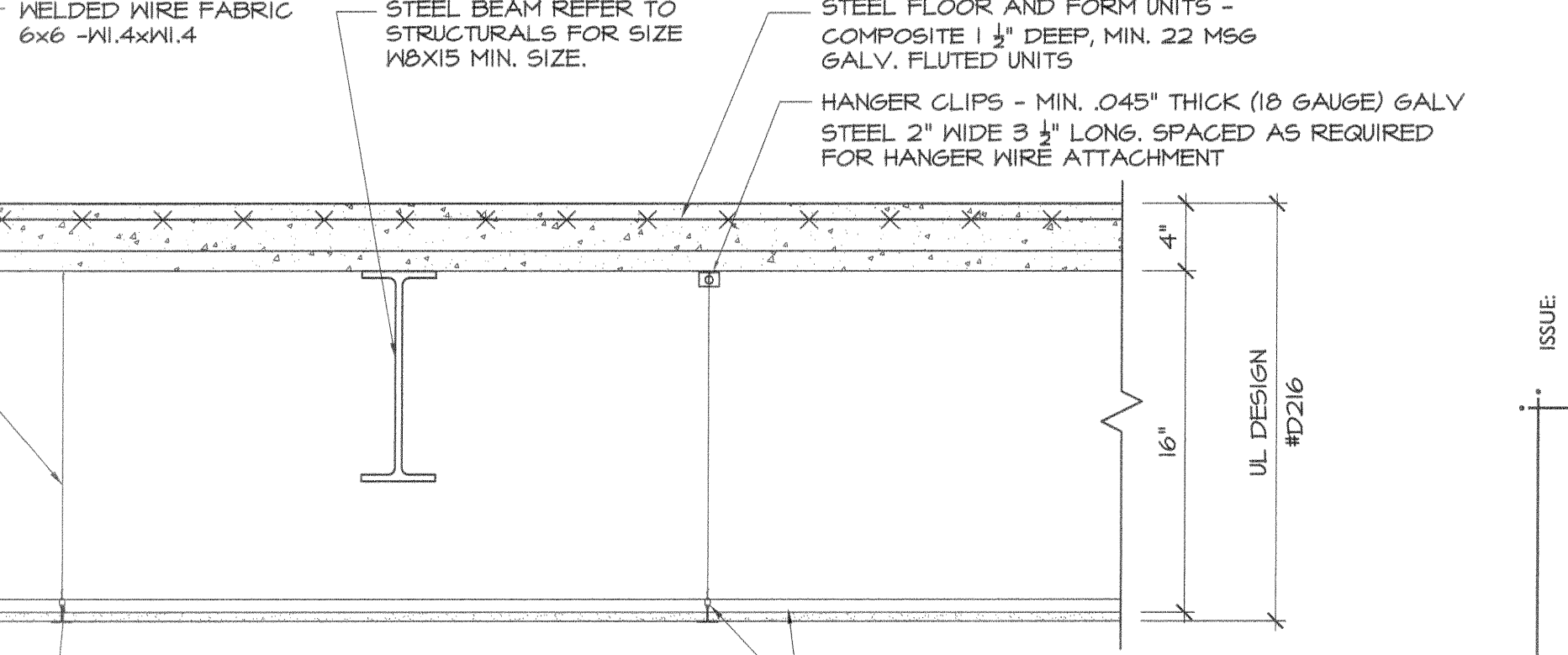
FLOOR/CEILING ASSEMBLY

F3	FIRE RATINGS: 2 HR.	DESIGN: UL #D502*
	S.T.C. RATING: N/A	

\* SIMILAR DUE TO 1 HR RATING

MAIN RUNNERS CHICAGO METALLIC CORP. NOMINAL 10 OR 12 FT LONG, 1-1/2" WIDE FACE, SPACED 4'-0" O.C. CROSS TEES NOMINAL 4 FT LONG, 1-1/2" WIDE FACE INSTALLED AT LIGHT FIXTURES, INSTALLED PERPENDICULAR TO MAIN RUNNERS, SPACED 24" O.C. ADDITIONAL CROSS TEES OR CROSS CHANNELS USED AT 8" FROM EACH SIDE OF BUTTED WALLBOARD END JOINTS. THE CROSS TEES OR CROSS CHANNELS MAY BE RIVETED OR SCREWED TO THE WALL ANGLE OR CHANNEL TO FACILITATE THE CEILING INSTALLATION. CROSS CHANNEL NOMINAL 4 FT LONG, INSTALLED PERPENDICULAR TO MAIN RUNNERS, SPACED 24" O.C. WHEN BATTS AND BLANKETS ARE USED CROSS CHANNELS SPACED 16" O.C. WALL ANGLE OR CHANNEL 24 M56 PAINTED OR GALV. STEEL ANGLE WITH 1" LEGS OR CHANNEL WITH 1 1/2" DEEP WITH 15/16" BOTTOM FLANGE

4" 3000 PSI NORMAL WEIGHT (150 PCF) CONG. SLAB



HANGER WIRE - NO 12 SWS GALV. STEEL ATTACHED TO HANGER CLIPS. HANGER WIRES SPACED AT 48" O.C. OR AT EVERY OTHER MAIN RUNNER/CROSS TEE INTERSECTION ALONG MAIN RUNNERS. ONE HANGER WIRE TO OCCUR AT ALL FOUR CORNERS OF LIGHT FIXTURES. ADDITIONAL HANGER WIRE REQUIRED AT THE MIDSPAN OF CROSS TEES RUNNING PARALLEL AND NEAREST TO THE WALLS AND NEAR THE END OF CUT CROSS TEES LONGER THAN 2 FT. WHICH ABUT WALLS.

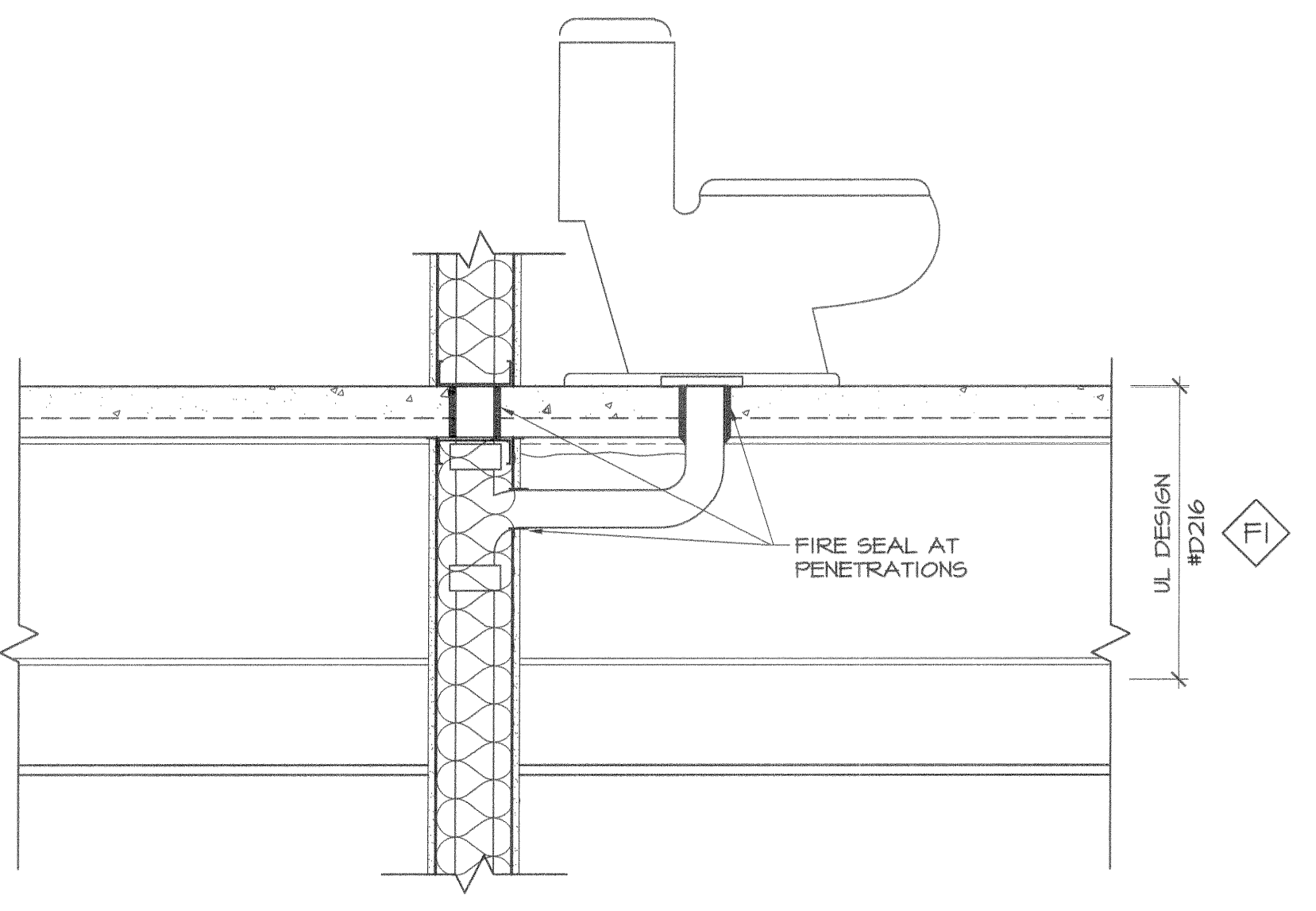
ACOUSTICAL MATERIAL - NOMINAL 5/8 OR 3/4 IN. THICK LAY-IN PANELS IN A NOMINAL PANEL SIZE.

HOLD DOWN CLIPS - NO. 28 M56 SPRING STEEL. WHEN CEILING IS COMPOSED OF NOMINAL 24 x 24 IN. LAY-IN PANELS, ONE CLIP PLACED OVER THE BULB OF CROSS TEE NEAR CROSS TEE MID POINT. WHEN CEILING IS COMPOSED OF 24 x 48 IN. LAY-IN PANELS, TWO CLIPS PLACED OVER BULB OF EACH CROSS TEE NEAR CROSS TEE QUARTER POINT.

FLOOR/CEILING ASSEMBLY

F2	FIRE RATINGS: 2 HR.	DESIGN: UL #D216
	S.T.C. RATING: N/A	

MAIN RUNNERS NOMINAL 10 OR 12 FT LONG, 15/16" OR 1-1/2" WIDE FACE, SPACED 4'-0" O.C. CROSS TEES NOMINAL 4 FT LONG, 1-1/2" WIDE FACE INSTALLED AT LIGHT FIXTURES, INSTALLED PERPENDICULAR TO MAIN RUNNERS, SPACED 24" O.C. ADDITIONAL CROSS TEES OR CROSS CHANNELS USED AT 8" FROM EACH SIDE OF BUTTED WALLBOARD END JOINTS. THE CROSS TEES OR CROSS CHANNELS MAY BE RIVETED OR SCREWED TO THE WALL ANGLE OR CHANNEL TO FACILITATE THE CEILING INSTALLATION. CROSS CHANNEL NOMINAL 4 FT LONG, INSTALLED PERPENDICULAR TO MAIN RUNNERS, SPACED 24" O.C. WHEN BATTS AND BLANKETS ARE USED CROSS CHANNELS SPACED 16" O.C. WALL ANGLE OR CHANNEL 24 M56 PAINTED OR GALV. STEEL ANGLE WITH 1" LEGS OR CHANNEL WITH 1 1/2" DEEP WITH 15/16" BOTTOM FLANGE



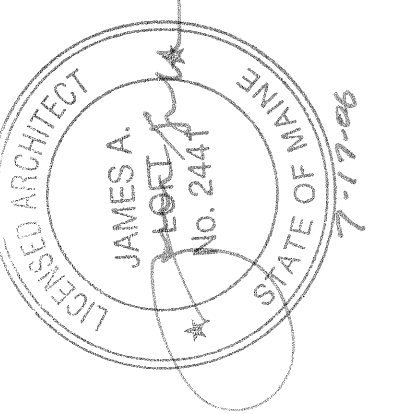
(DIAGRAMMATIC SECTION ONLY)

UL PENETRATION SCHEDULE				
FLOOR CONSTRUCTION	TYPE	MATERIAL	UL#	MANUFACTURER
CONCRETE SLAB	STEEL PIPE & CONDUIT	MINERAL WOOD PACKING MATERIAL WITH FIRE SEALANT	FA 1005	TREMCO
	SCH. 40 PVC	MINERAL WOOD PACKING MATERIAL WITH MIN. 1/2" FIRE SEALANT	FA 1013	
	CABLES	MINERAL WOOD PACKING MATERIAL WITH MIN. 1/2" FIRE SEALANT	FA 3003	JM
WALL GYPSUM (GENERIC)	STEEL PIPE/COPPER 4"	2 LAYERS 5/8" (2 HOUR)	WL. 1058 WL. 1068	H ISOLATED
	PVC TO 2"	NO COLLAR	WL. 2048	H
	PVC TO 6"	W/COLLAR	WL. 2078	H
	CABLES	W/COLLAR (1) HOUR	WL. 3045	H
	CABLES	WO COLLAR (2) HOUR	WL. 3047	H
	6" DIA. 28 GA. 3x10 24 GA.	ONE HOUR	7017 WL. 7001 OR WL. 7002	US6

GENERAL NOTES:

- ALL PENETRATIONS THROUGH THE FIRE RATED ASSEMBLIES BOTH HORIZONTALLY AND VERTICALLY SHALL BE SEALED WITH FIREPROOFING MATERIALS TO MAINTAIN THE INTEGRITY OF THE ASSEMBLY RATING.
- WHERE A TESTING LAB DESIGN NUMBER IS DESIGNATED (i.e., UL, GYPSUM ASSOC., ETC.), PARTITIONS MUST BE CONSTRUCTED IN STRICT ACCORDANCE WITH THE TESTED DESIGN ASSEMBLY. REFER TO THE TESTING LABORATORY'S DIRECTORY (I.E., UL FIRE RESISTANCE DIRECTORY - 2006 OR GYPSUM ASSOC. FIRE RESISTANCE DESIGN MANUAL - 11TH EDITION) FOR DETAILS ON MATERIALS AND FASTENER REQUIREMENTS.
- REFER TO TESTING AGENCY REFERENCED FOR FASTENING CRITERIA AND BACK BLOCKING OF G.W.B. JOINTS. ALL JOINTS AND SCREW HEADS FINISHED.
- COORDINATE LOCATIONS OF WIRING AND PLUMBING WITHIN THE FRAMING.
- ELECTRICAL BOXES LOCATED ON OPPOSITE SIDES OF WALL OR PARTITIONS SHALL BE SEPARATED BY A MINIMUM HORIZONTAL DISTANCE OF 24 INCHES. THE MINIMUM SEPARATION DISTANCE BETWEEN BOXES MAY BE REDUCED WHEN "WALL OPENING PROTECTIVE MATERIALS (CLIV) ARE INSTALLED ACCORDING TO THE REQUIREMENTS OF THEIR CLASSIFICATION. THE SURFACE AREA OF THE INDIVIDUAL BOXES SHALL NOT EXCEED 16 SQ. IN. THE AGGREGATE SURFACE AREA OF THE BOXES SHALL NOT EXCEED 100 SQ. IN. PER 100 SQ. FT. OF WALL SURFACE.
- REFER TO SPECIFICATIONS FOR THROUGH PENETRATION FIRE STOP SYSTEMS.

**PRO CON CON**  
INCORPORATED  
Design and Construction Management  
ARCHITECTURE  
P.O. Box 485, Manchester, NH 03108  
603.622.7250



ISSUE 05/26/2006: ISSUED FOR PRICING 07/17/2006: ISSUED FOR PERMIT

**CUSTOM HOUSE SQUARE**  
300 FORE STREET  
PORTLAND, MAINE  
FLOOR/CEILING & COLUMN WRAP ASSEMBLIES

PROJECT ARCHITECT: MW  
DRAWN BY: SO  
PROJECT #: 300506  
**A4.61**