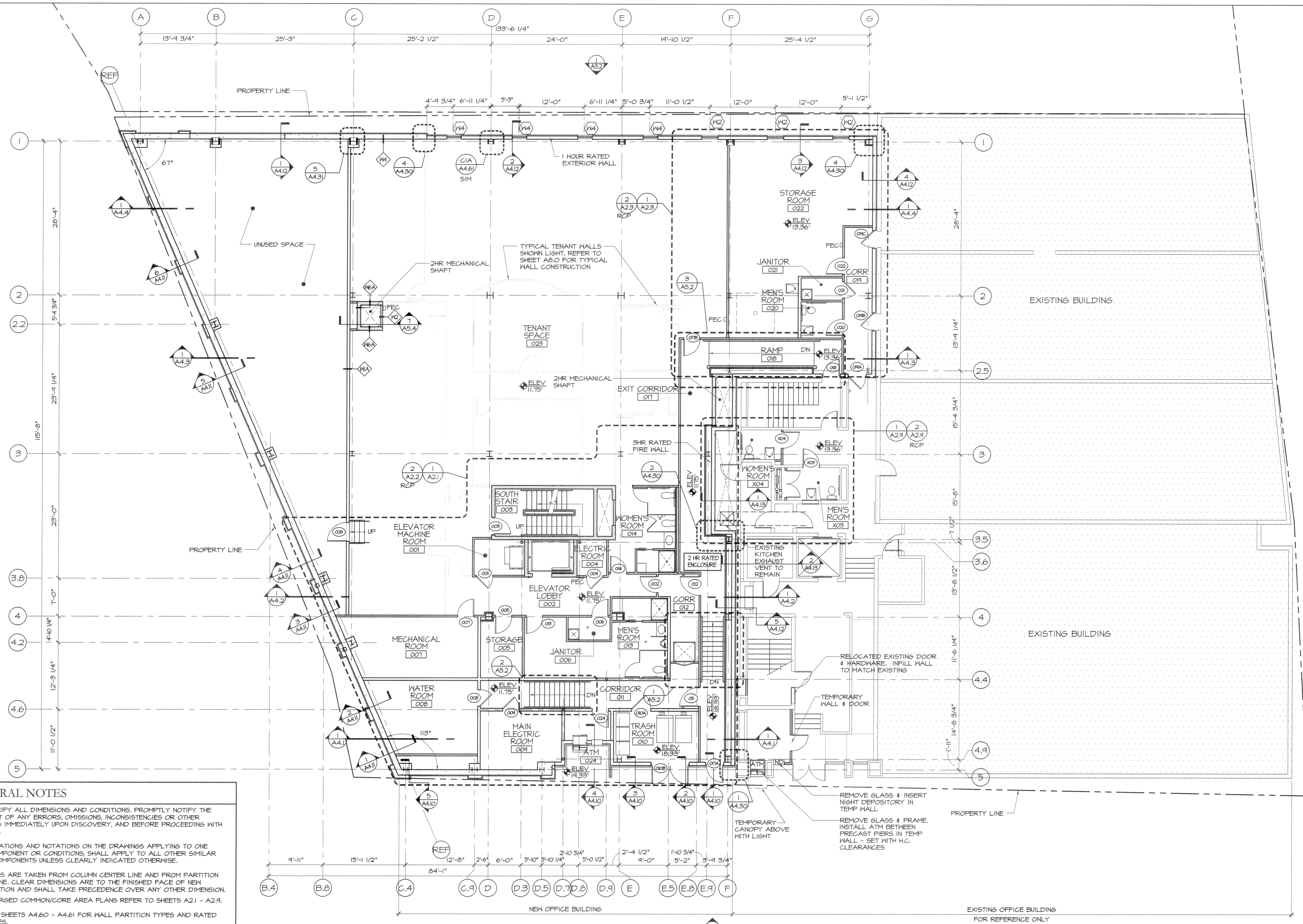


sonell - Mon, 17 Jul 2006 - 4:33am

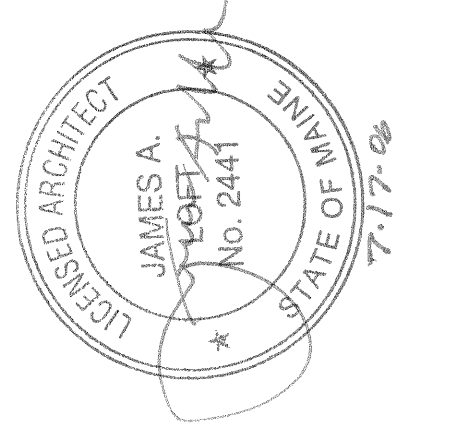
G:\Prod\Year2006\300506 - Custom_House_Square\DWG\0506A1.0.dwg



- GENERAL NOTES**
1. FIELD VERIFY ALL DIMENSIONS AND CONDITIONS. PROMPTLY NOTIFY THE ARCHITECT OF ANY ERRORS, OMISSIONS, INCONSISTENCIES OR OTHER PROBLEMS IMMEDIATELY UPON DISCOVERY, AND BEFORE PROCEEDING WITH THE WORK.
 2. ALL INDICATIONS AND NOTATIONS ON THE DRAWINGS APPLYING TO ONE AREA, COMPONENT OR CONDITIONS, SHALL APPLY TO ALL OTHER SIMILAR AREAS, COMPONENTS UNLESS CLEARLY INDICATED OTHERWISE.
 3. DIMENSIONS ARE TAKEN FROM COLUMN CENTER LINE AND FROM PARTITION CENTER LINE. CLEAR DIMENSIONS ARE TO THE FINISHED FACE OF NEW CONSTRUCTION AND SHALL TAKE PRECEDENCE OVER ANY OTHER DIMENSION.
 4. FOR ENLARGED COMMON/CORE AREA PLANS REFER TO SHEETS A2.1 - A2.4.
 5. REFER TO SHEETS A4.60 - A4.61 FOR WALL PARTITION TYPES AND RATED ASSEMBLIES.
 6. VCJ INDICATES VERTICAL CONTROL JOINTS. ALL JOINTS AT INSIDE CORNERS SHOULD BE PARALLEL WITH THE LENGTH OF THE BUILDING.

LOWER LEVEL FLOOR PLAN
SCALE: 1/8" = 1'-0"

PRO CON INC
ARCHITECTURE
INCORPORATED
Design and Construction Management
A Subsidiary Company
1000 Main Street, Suite 100
Portland, ME 04108
603.622.8811 Fax 603.622.7550
www.procon.com



ISSUE 05/26/2006: ISSUED FOR PRICING
07/11/2006: ISSUED FOR PERMIT

CUSTOM HOUSE SQUARE
300 FORE STREET
PORTLAND, MAINE
LOWER LEVEL FLOOR PLAN

PROJECT ARCHITECT: MW
DRAWN BY: SO, BR
PROJECT #: 300506

A1.0