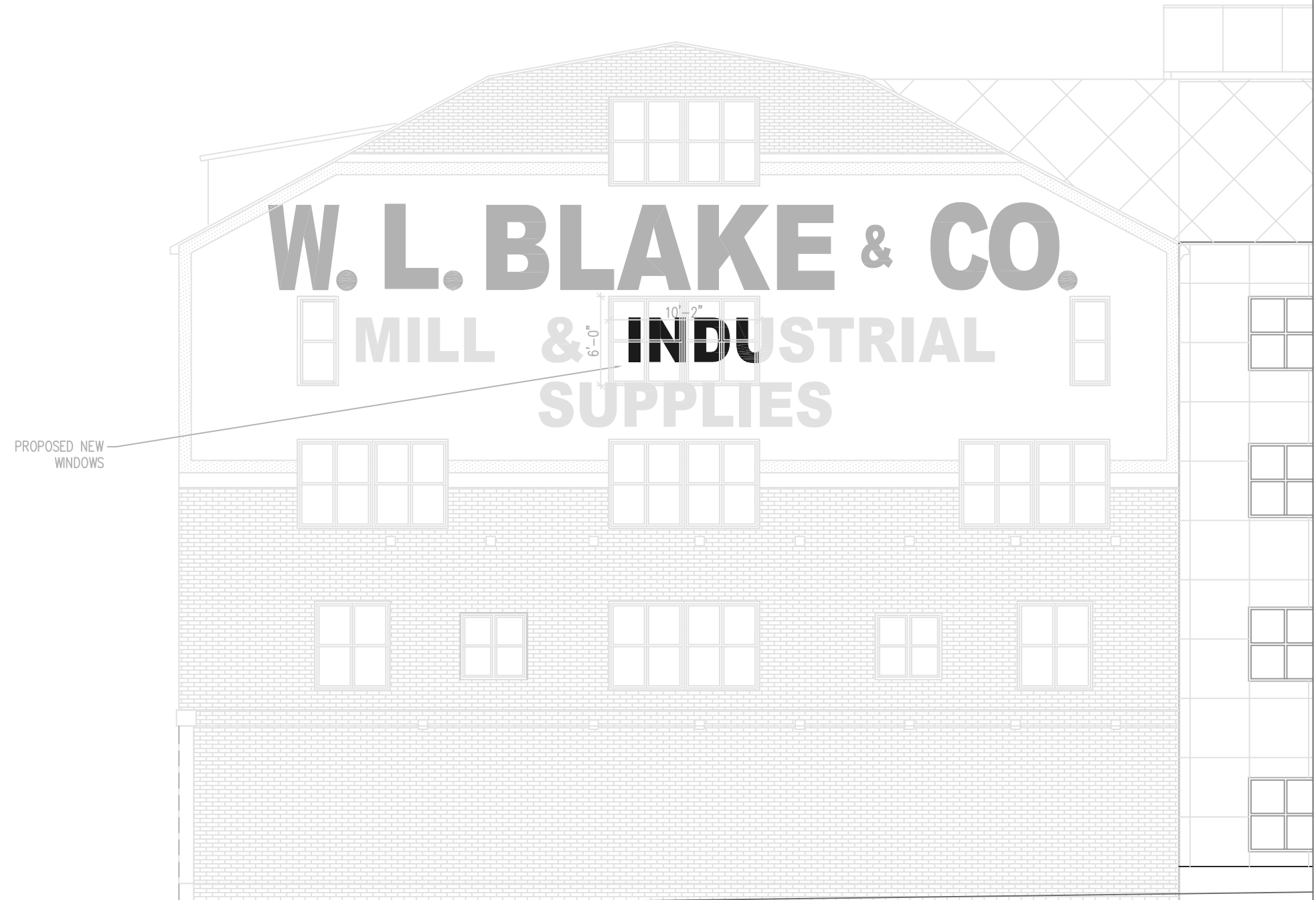


**Window Placement: Option 1**

Window opening is the same size as the window openings above and below. However, the new window opening interrupts the third row of lettering.



Consulting Engineer:

**ARCHETYPE**  
architects  
48 Union Wharf Portland, Maine 04101  
(207) 772-6022 Fax (207) 772-4056

Architect:

**BLAKE BUILDING**  
7 CUSTOM HOUSE STREET  
PORTLAND, ME 04101

Project:

Revisions:

Scale:

Date:

**PROPOSED WINDOW  
ADDITION**