

© 2016 RYAN SENATORE ARCHITECTURE

THE OLYMPIA COMPANIES
7 CUSTOM HOUSE STREET, 5TH FLOOR
PORTLAND, MAINE



RYAN SENATORE ARCHITECTURE
565 CONGRESS STREET
PORTLAND, MAINE 04101
207-650-6414
senatorearchitecture.com

CONSULTANTS:

REVISIONS:
▲ REVISION #1 - 10/14/16

DATE: 07 SEPTEMBER 2016

PROJECT No. 1640

DRAWN BY: RRT

CHECKED BY: RJS

SCALE: AS NOTED

SHEET TITLE:
CODE REVIEW PLAN

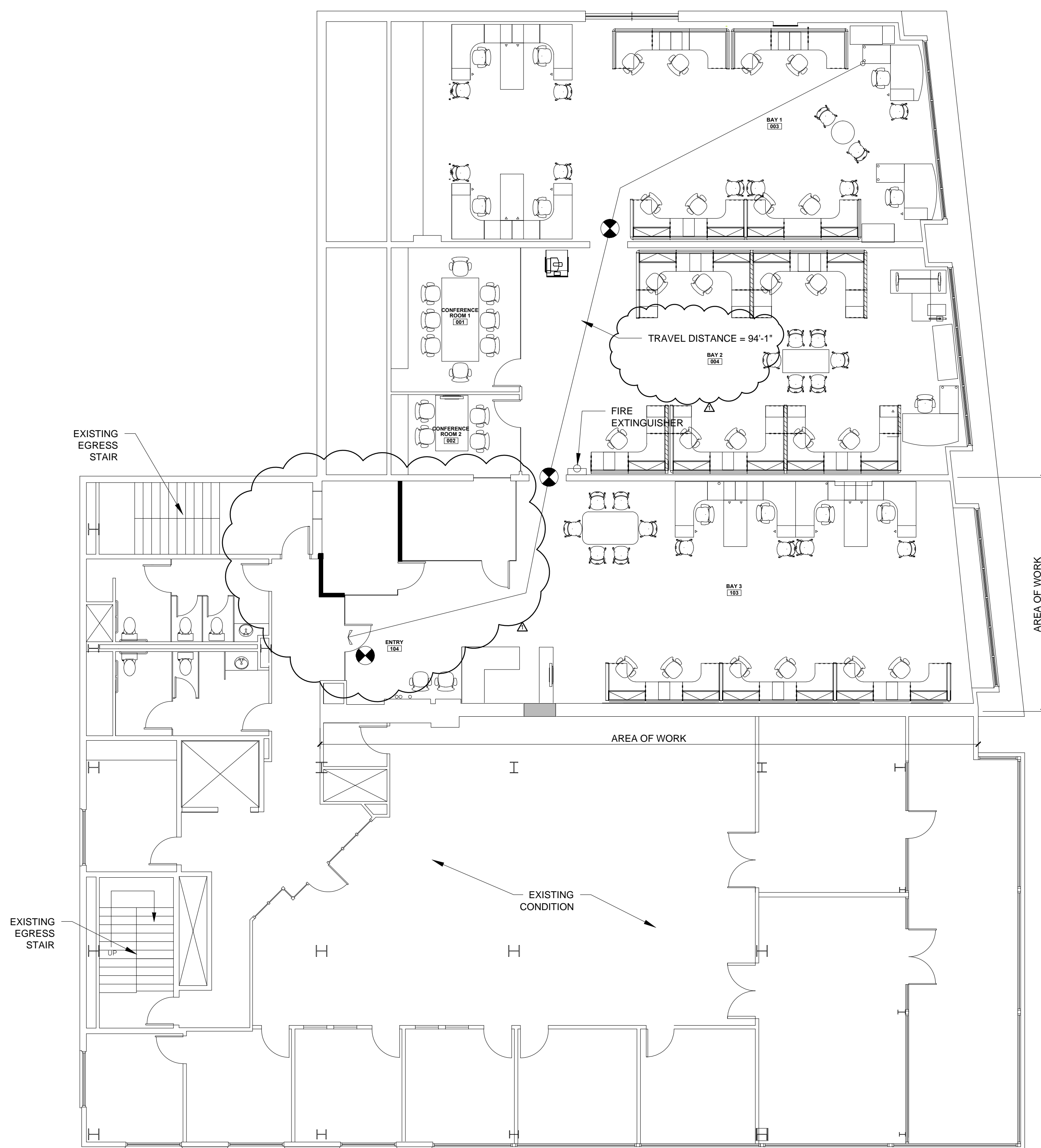
G1-1

LEGEND	
	EXIT
	FIRE EXTINGUISHER

GENERAL NOTE:

1.) EMERGENCY LIGHTING BY DESIGN / BUILD ELECTRICAL CONTRACTOR (NOT SHOWN ON PLAN)

2.) EXIT SIGNS ARE SHOWN FOR GRAPHIC PURPOSES ONLY. DESIGN / BUILD ELECTRICAL CONTRACTOR TO BE RESPONSIBLE FOR FINAL LOCATIONS AND CODE COMPLIANCE.



1 CODE REVIEW PLAN
1/8" = 1'-0"