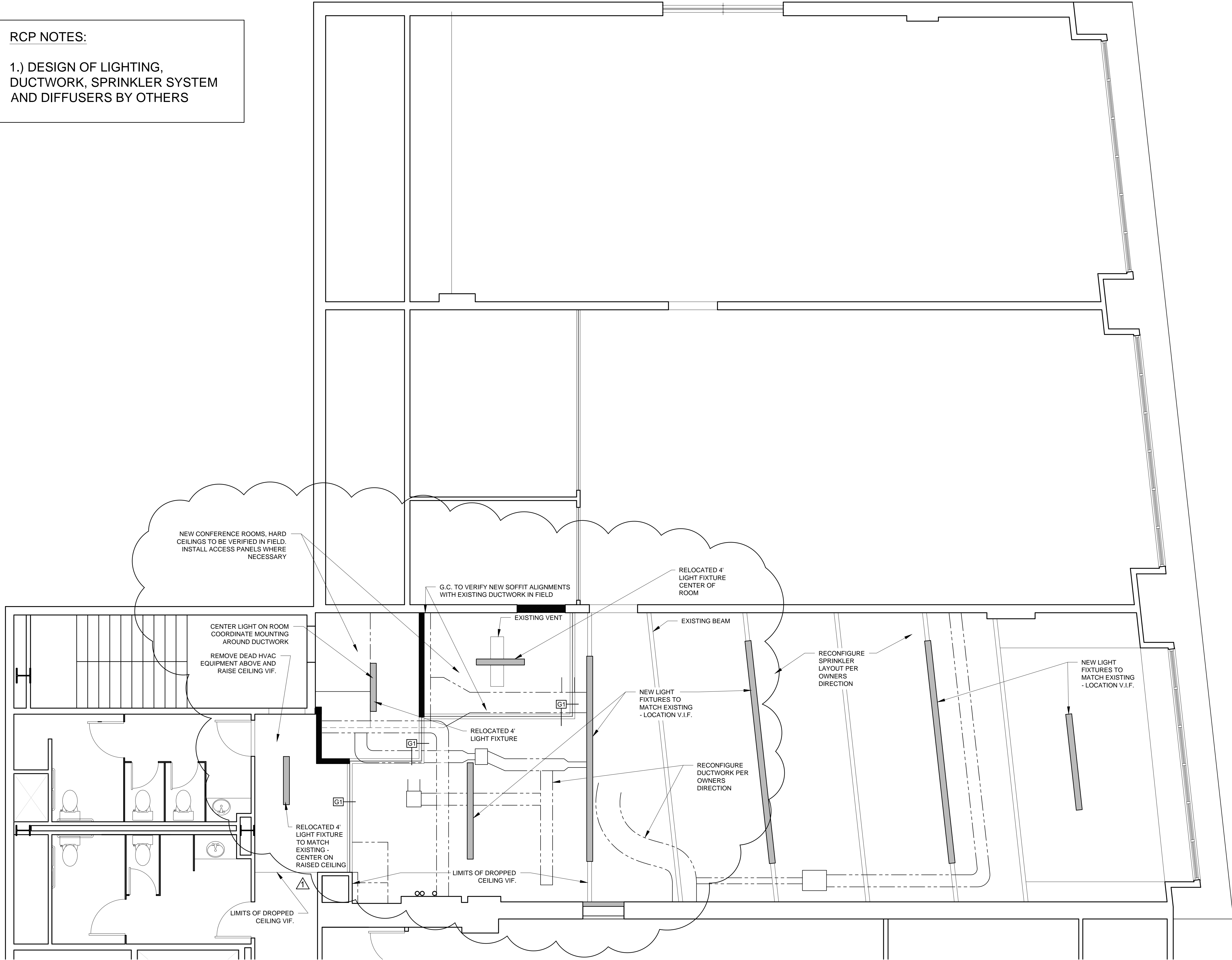
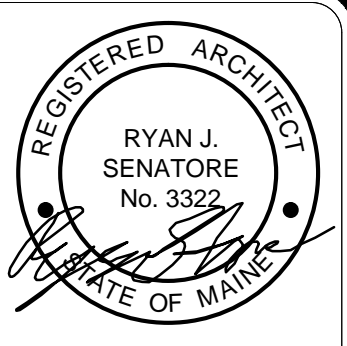


RCP NOTES:
 1.) DESIGN OF LIGHTING,
 DUCTWORK, SPRINKLER SYSTEM
 AND DIFFUSERS BY OTHERS



1 PROPOSED REFLECTED CEILING PLAN
 1/4" = 1'-0"



© 2016 RYAN SENATORE ARCHITECTURE

THE OLYMPIA COMPANIES
 7 CUSTOM HOUSE STREET, 5TH FLOOR
 PORTLAND, MAINE



RYAN SENATORE ARCHITECTURE
 565 CONGRESS STREET
 PORTLAND, MAINE 04101
 207-650-6414
 senatorsarchitecture.com

CONSULTANTS:

REVISIONS:
 REVISION #1 - 10/14/16

DATE: 07 SEPTEMBER 2016
 PROJECT No. 1640
 DRAWN BY: RRT
 CHECKED BY: RJS
 SCALE: AS NOTED

SHEET TITLE:
 PROPOSED REFLECTED CEILING PLAN

A1-2