

© 2016 RYAN SENATORE ARCHITECTURE

**THE OLYMPIA COMPANIES**  
 7 CUSTOM HOUSE STREET, 5TH FLOOR  
 PORTLAND, MAINE



RYAN SENATORE ARCHITECTURE  
 565 CONGRESS STREET  
 PORTLAND, MAINE 04101  
 207-650-6414  
 senatorearchitecture.com

CONSULTANTS:

REVISIONS:

REVISION #1 - 10/14/16

DATE: 07 SEPTEMBER 2016

PROJECT No. 1640

DRAWN BY: RRT

CHECKED BY: RJS

SCALE: AS NOTED

SHEET TITLE:

PROPOSED FLOOR PLAN

A1-1

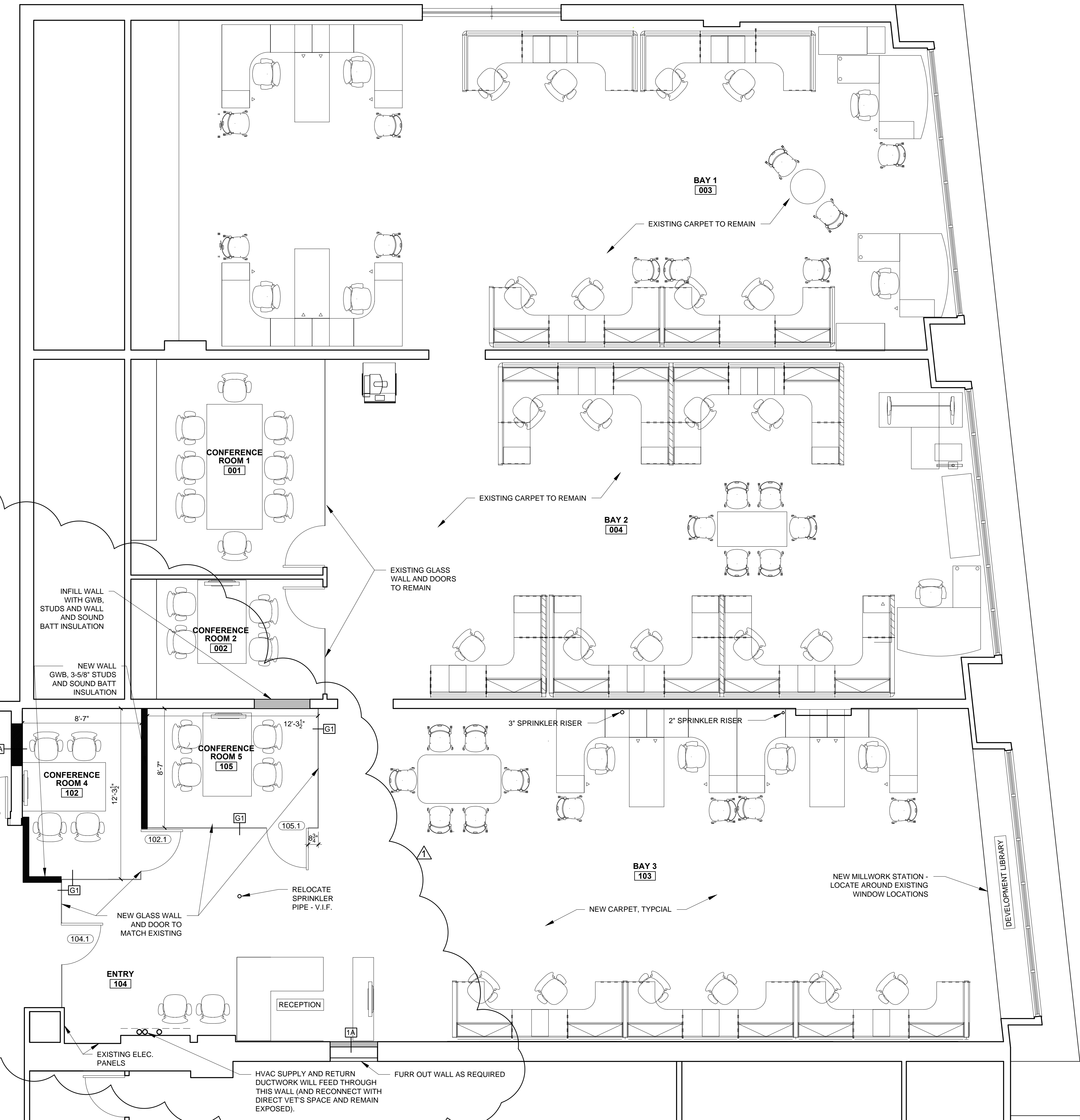
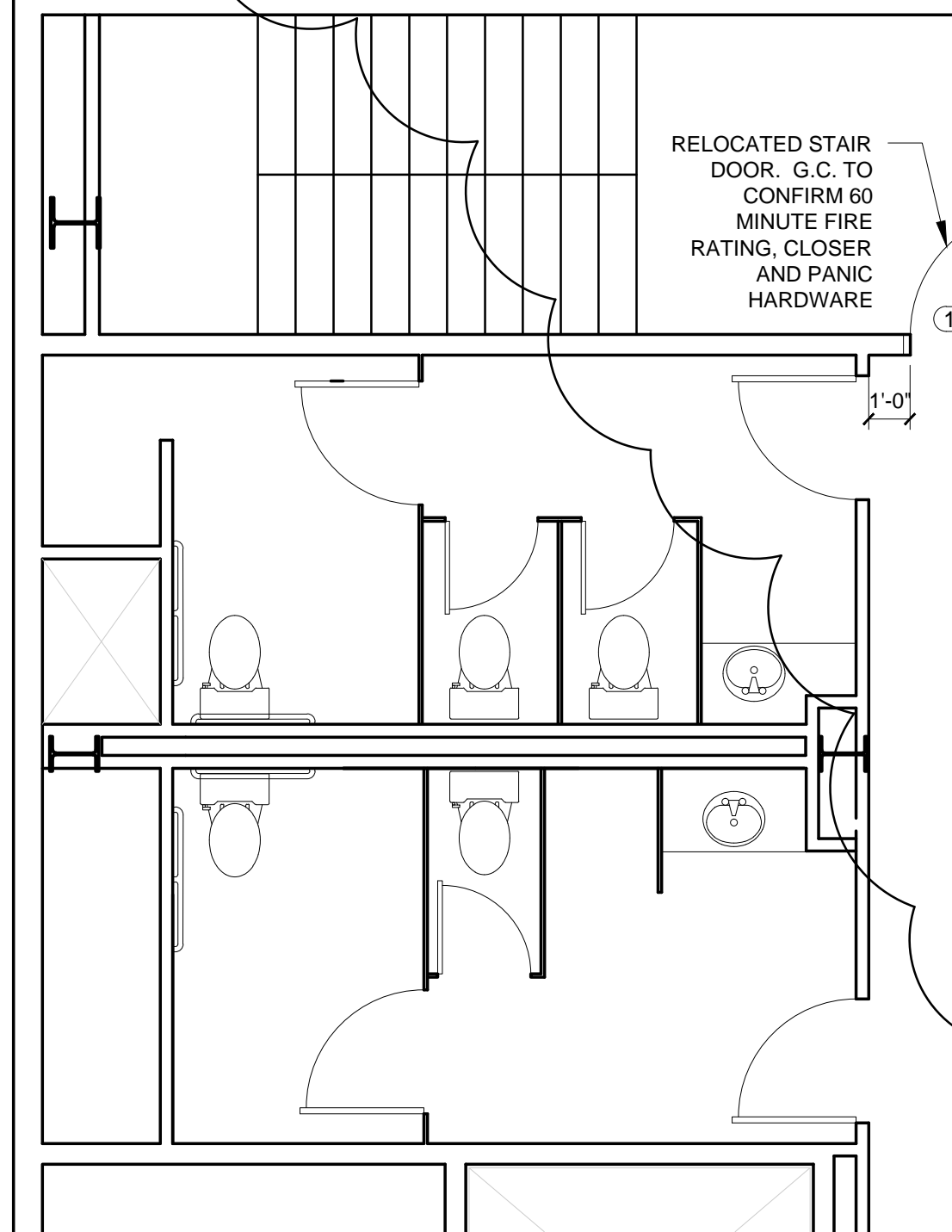
**NOTES:**  
 1.) ALL NEW SOFFITS AND WALLS TO BE ACOUSTICALLY INSULATED, TYPICAL.  
 2.) CONTRACTOR TO CONFIRM HEIGHTS OF SOFFITS WITH GLASS INSTALLER WHERE APPLICABLE  
 3.) FURNITURE LAYOUT SHOWN FOR GRAPHIC PURPOSES ONLY

GRAPHIC DEPICTION (SECTION)		DESCRIPTION		
		- NEW METAL FRAMED WALL SYSTEM (WITH 2" DEEP LEG TOP TRACK) FASTENED THROUGH TO CONCRETE CEILING DECK - CONTRACTOR TO CONFIRM HEIGHT OF SOFFIT WITH GLASS INSTALLER - NEW 1" BOTTOM RAIL WITH HIDDEN TOP RAIL FRAMELESS GLASS SYSTEM - CONTRACTOR TO CONFIRM HEIGHT OF SOFFIT WITH GLASS INSTALLER		
TYPE	FIRE RATING	UL NUMBER	STC RATING	IIC RATING
G1	N/A	N/A	N/A	N/A

GRAPHIC DEPICTION (SECTION)		DESCRIPTION		
		- NEW METAL FRAMED WALL SYSTEM TO TERMINATE AT BOTTOM OF EXISTING CEILING DECK - 5/8" TYPE 'X' GWB - 3" METAL STUDS AT 16" O.C. - 3" SOUND BATT INSULATION - 5/8" TYPE 'X' GWB		
TYPE	FIRE RATING	UL NUMBER	STC RATING	IIC RATING
1A	1 HOUR			

GRAPHIC DEPICTION (SECTION)		DESCRIPTION		
		- (2) LAYERS 5/8" TYPE 'X' GWB - 3" METAL STUDS AT 16" O.C. - 3" ROXUL FIRE BATT INSULATION - (2) LAYERS 5/8" TYPE 'X' GWB		
TYPE	FIRE RATING	UL NUMBER	STC RATING	IIC RATING
2A	2 HOUR			

EACH NEW CONFERENCE ROOM TO INCLUDE:  
 - HDMI (AT TABLE TOP HEIGHT AND TV  
 - POWER (AT TABLE TOP HEIGHT AND TV HEIGHT)  
 - VOICE  
 - ACOUSTIC SEALANT AT GLAZING PANEL SEPARATION



1 PROPOSED FLOOR PLAN  
 1/4" = 1'-0"