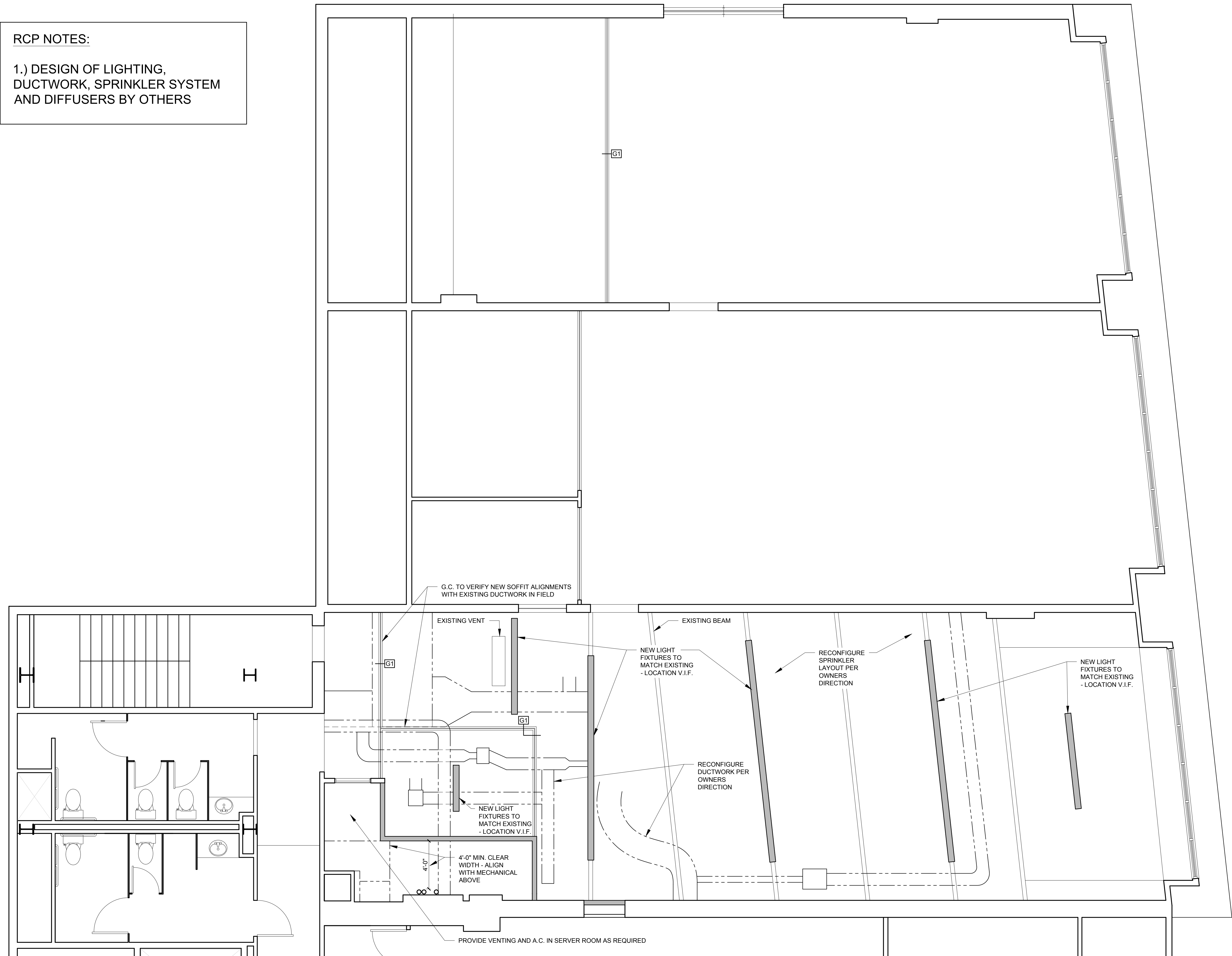
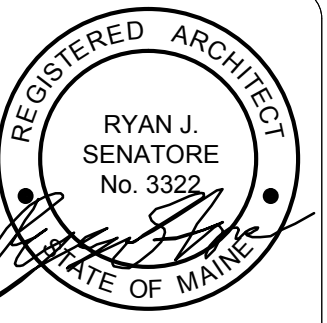


RCP NOTES:

1.) DESIGN OF LIGHTING,  
DUCTWORK, SPRINKLER SYSTEM  
AND DIFFUSERS BY OTHERS



1 PROPOSED REFLECTED CEILING PLAN  
1/4" = 1'-0"



© 2016 RYAN SENATORE  
ARCHITECTURE

THE OLYMPIA COMPANIES  
7 CUSTOM HOUSE STREET, 5TH FLOOR  
PORTLAND, MAINE



RYAN SENATORE  
ARCHITECTURE  
565 CONGRESS STREET  
PORTLAND, MAINE 04101  
207-650-6414  
senatorearchitecture.com

CONSULTANTS:

REVISIONS:

DATE: 07 SEPTEMBER 2016

PROJECT No. 1640

DRAWN BY: RRT

CHECKED BY: RJS

SCALE: AS NOTED

SHEET TITLE:

PROPOSED  
REFLECTED  
CEILING PLAN

A1-2