

© 2014 RYAN SENATORE ARCHITECTURE

WINDOW INSTALLATION
BLAKE BUILDING
PORTLAND, MAINE



RYAN SENATORE ARCHITECTURE
 565 CONGRESS STREET, SUITE 304
 PORTLAND, MAINE 04101
 207-650-6414
 senatorearchitecture.com

CONSULTANTS:
STRUCTURAL:
 Structural Integrity
 77 Oak Street
 Portland, ME 04101
 207-774-4614

REVISIONS:

DATE: NOVEMBER 20, 2014

PROJECT No.: 1439

DRAWN BY: RJS

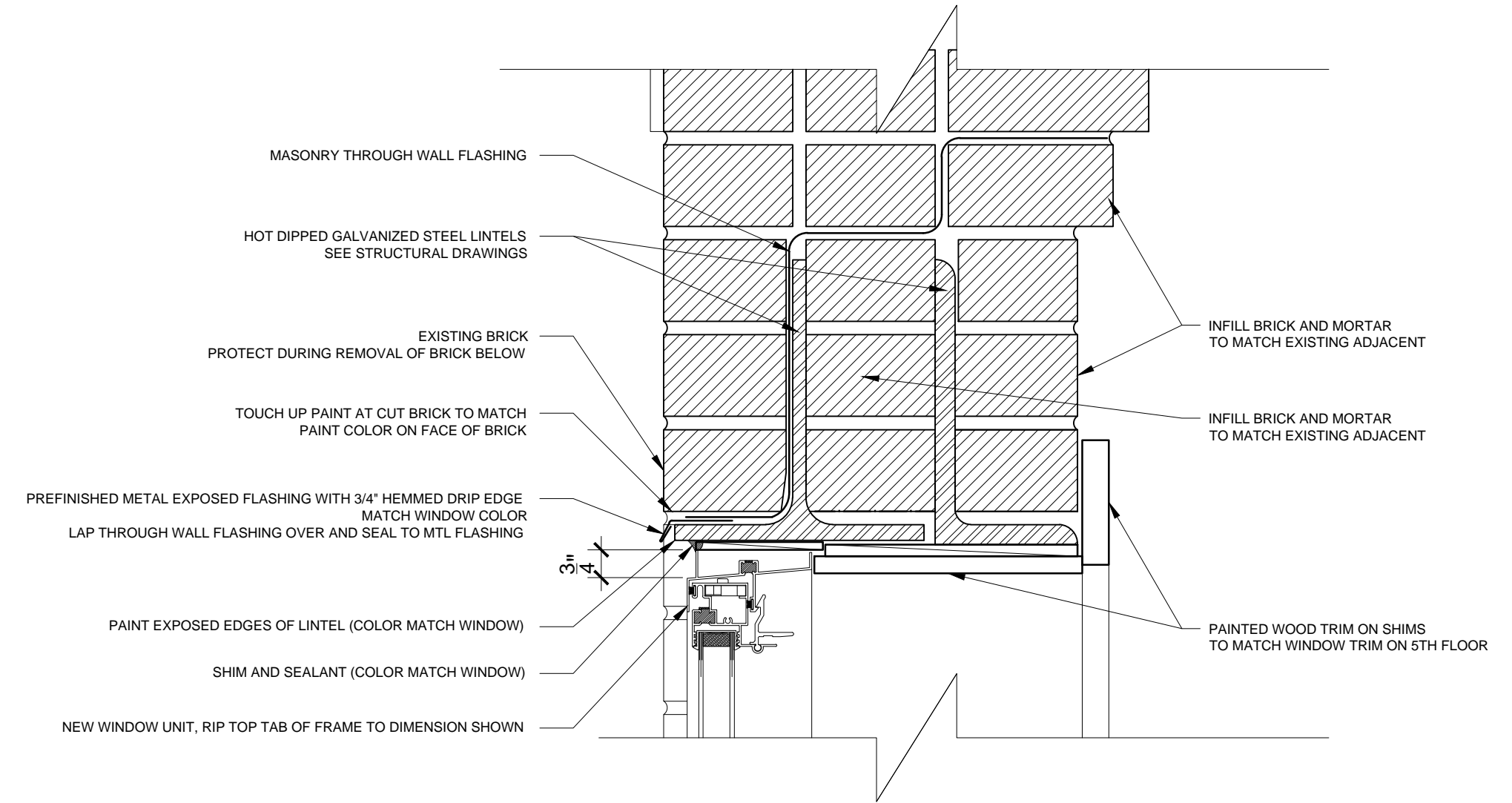
CHECKED BY: RJS

SCALE: AS NOTED

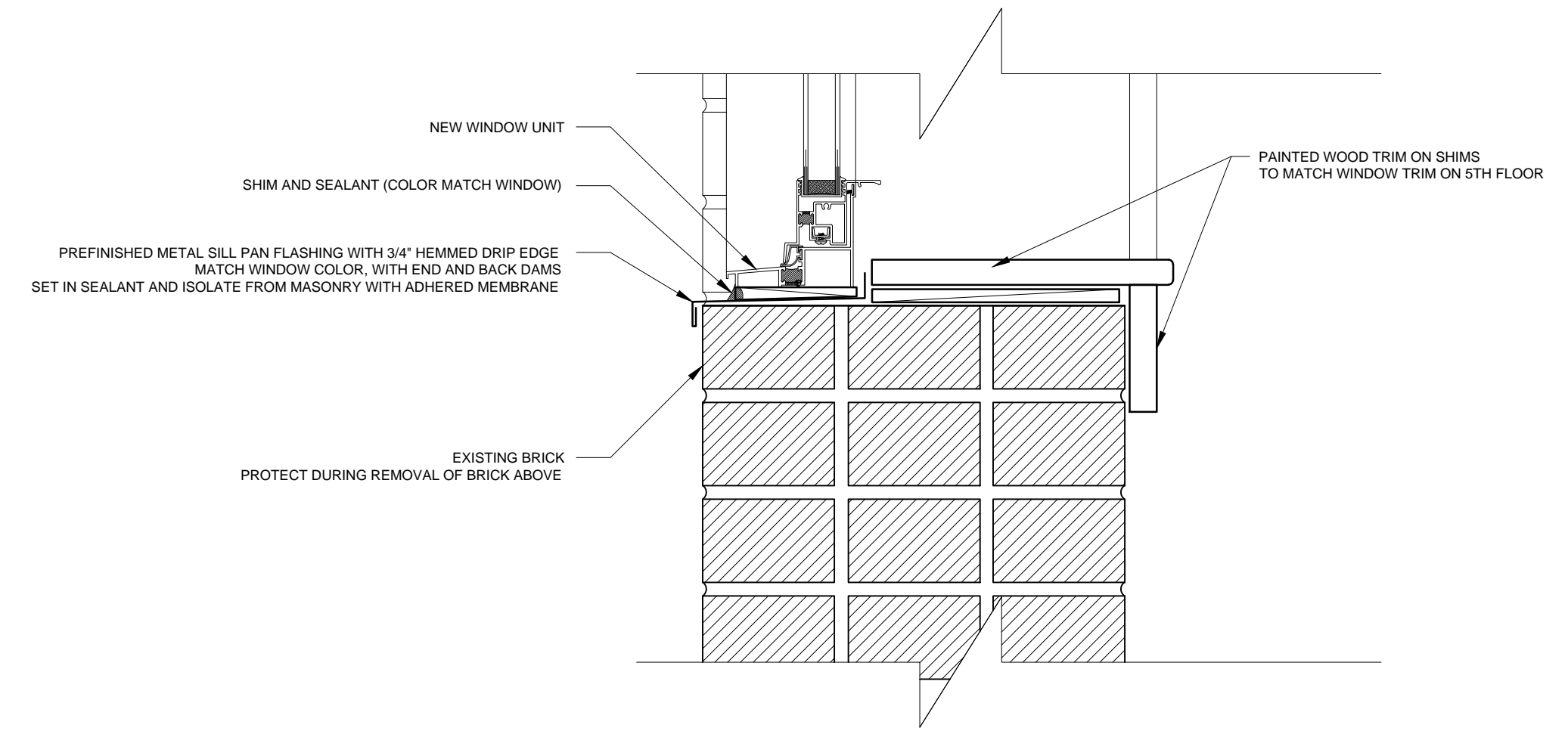
SHEET TITLE:
DETAILS AND WINDOW ELEVATION

A1-1

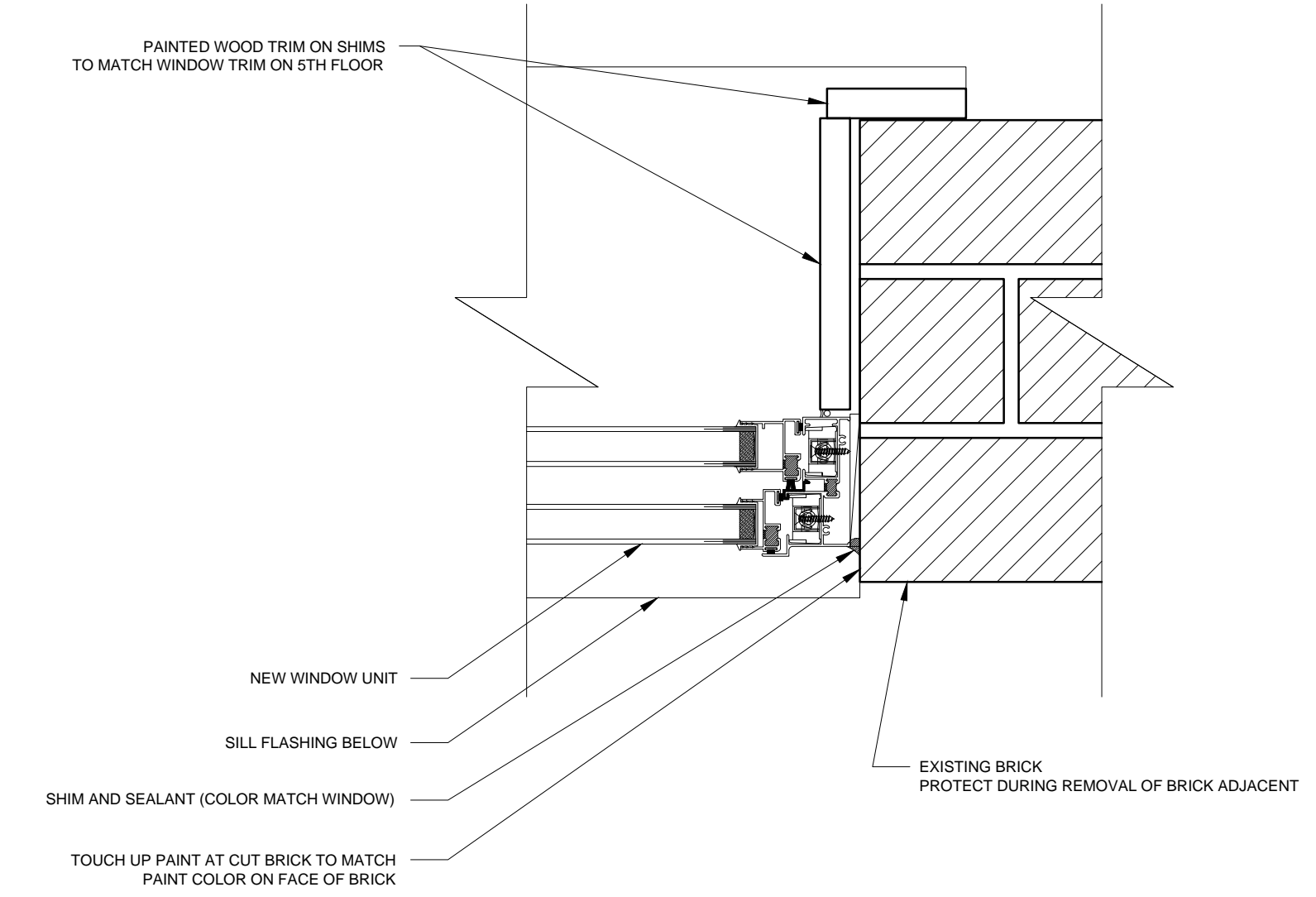
ISOLATE ALL DIS-SIMILAR METALS WITH MEMBRANE COMPATIBLE WITH EACH METAL TYPE TO PREVENT GALVANIC ACTION



4 WINDOW HEAD SECTION DETAIL
 3" = 1'-0"



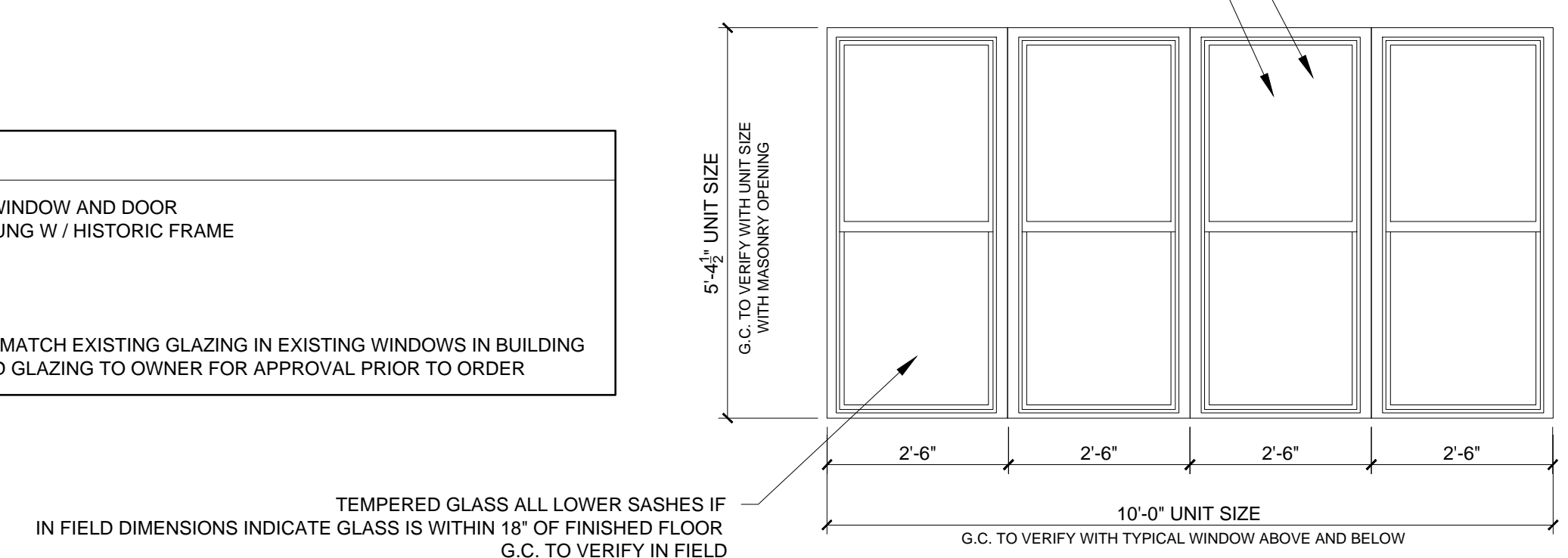
3 WINDOW SILL SECTION DETAIL
 3" = 1'-0"



2 WINDOW JAMB PLAN DETAIL
 3" = 1'-0"

WINDOW UNIT:
 -MANUFACTURER: UNIVERSAL WINDOW AND DOOR
 -MODEL: 400 SERIES DOUBLE HUNG W / HISTORIC FRAME
 -FACTORY MULLED UNIT
 -THERMALLY BROKEN FRAME
 -COLOR BLACK
 -NO SCREEN TRACK
 -INSULATED GLAZING UNITS TO MATCH EXISTING GLAZING IN EXISTING WINDOWS IN BUILDING
 -PROVIDE CORNER SAMPLE AND GLAZING TO OWNER FOR APPROVAL PRIOR TO ORDER

FACTORY MULLED THERMALLY BROKEN DOUBLE HUNG WINDOWS
 BLACK FINISH TO MATCH WINDOWS ABOVE AND BELOW
 -NO SCREENS
 APPLIED GRAPHICS NOT SHOWN FOR CLARITY



TEMPERED GLASS ALL LOWER SASHES IF
 IN FIELD DIMENSIONS INDICATE GLASS IS WITHIN 18" OF FINISHED FLOOR
 G.C. TO VERIFY IN FIELD

1 WINDOW ELEVATION
 1/2" = 1'-0"