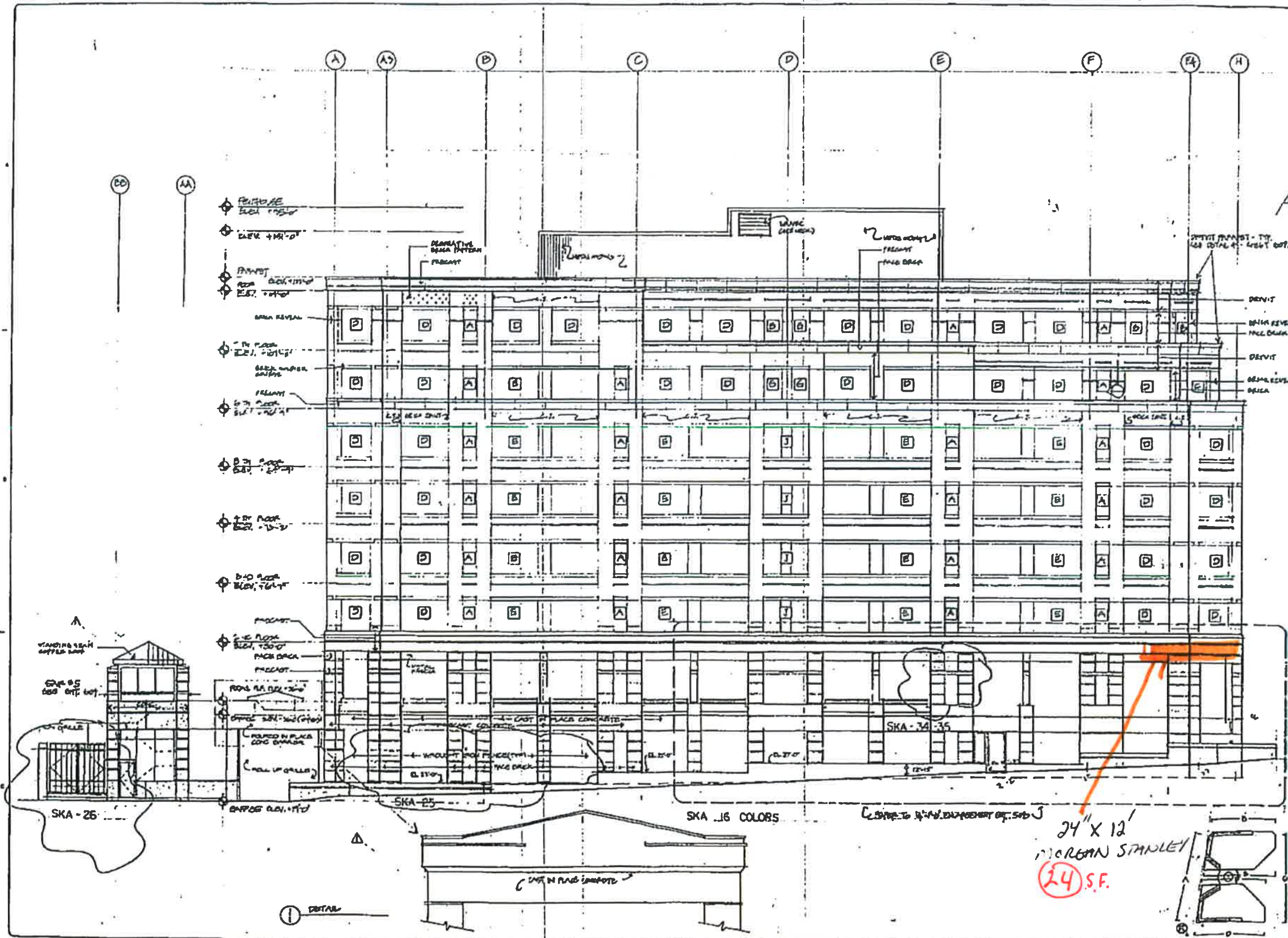


EXISTING SIGNAGE



W.W.

DATE: JAN. 11, 1911.
 PROJECT: MIDDLE STREET OFFICE BUILDING.
 ARCHITECT: W.W. [Signature]

EXTERIOR ELEVATION 'B'
 EAST
 SCALE: 1/4" = 1'-0"

CBT
 Architect

MIDDLE STREET
 OFFICE BUILDING

502

24" X 12"
 GREEN STAINLESS
 24 S.F.

