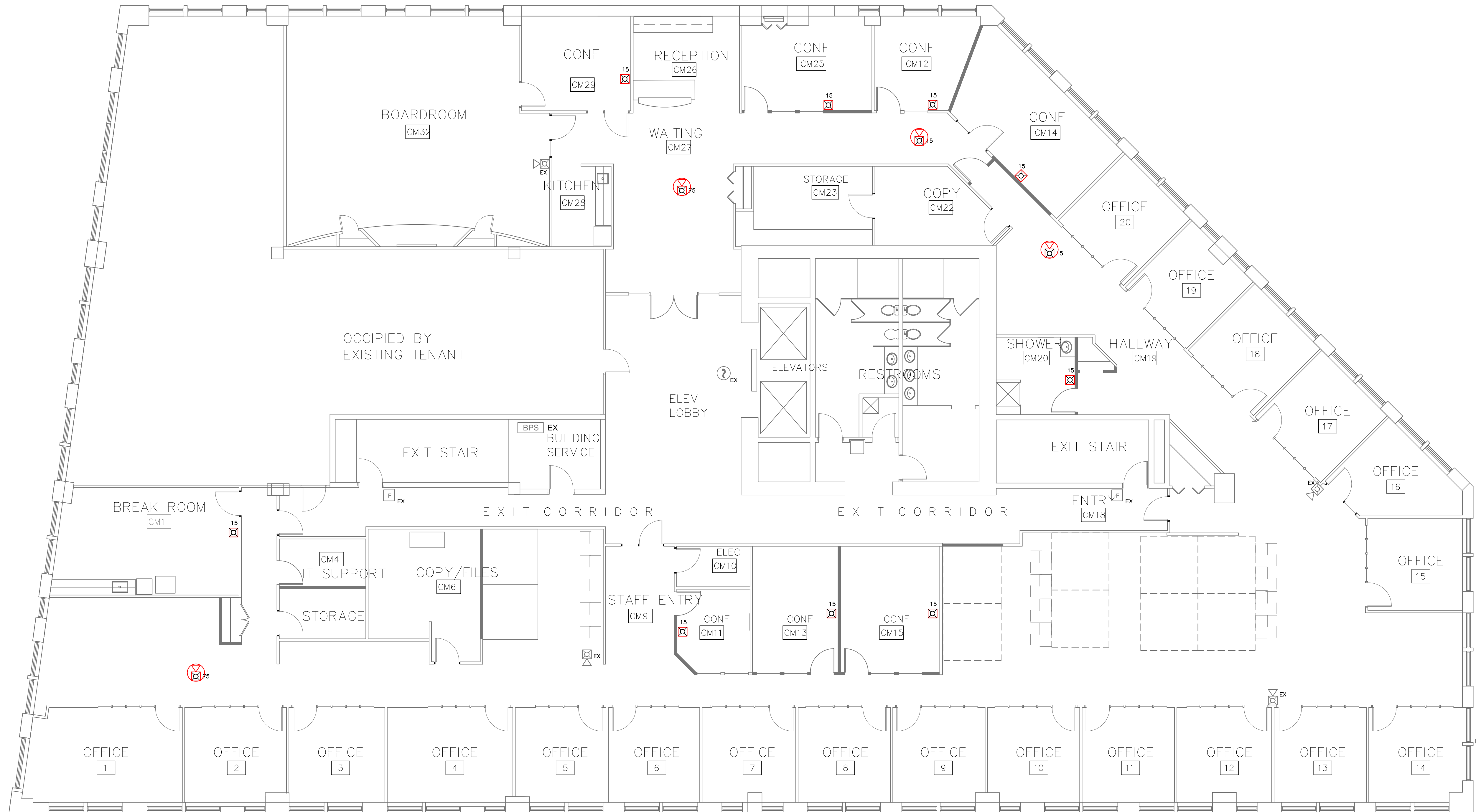


LEGEND:

| RISER DIAG SYM | NFPA SYMBOL* | DESCRIPTION | CATALOG # |
|-----------------|-----------------|--|---------------|
| FACP | FACP | Fire Alarm Control Panel (existing) | EST3 |
| BPS | | Remote Booster Panel (existing) | BPS10A |
| ? _{EX} | ? _{EX} | Addressable Smoke Detector (existing) | SIGA-PS |
| F _{EX} | F _{EX} | Addressable Pull Station (existing) | SIGA-278 |
| ⓧ# | ⓧ# | Speaker/Strobe Unit (White Wall Mount) # Indicates Candela Setting | G4HFWF-S2VMC |
| ⓧ# | ⓧ# | Strobe Unit (White Wall Mount) # Indicates Candela Setting | G1F-VM |
| ⓧ# | ⓧ# | Speaker/Strobe Unit (White Ceiling Mount) # Indicates Candela Setting | GCHF WF-S2VMC |

* NFPA 170 (2009)
Tables: 6.5, 6.7.1, 6.7.2, & 6.7.3



DWG NAME: Eaton Peabody
2nd Fl Renovation
100 Middle St
Portland, Maine
Fire Alarm Riser Diagram
DWG No: FA-003



Eaton Peabody
2nd Fl Renovation
100 Middle St
Portland, Maine
Fire Alarm Riser Diagram

JOB NAME:

| REV | DESCRIPTION | DATE | DRWN | TRD |
|-----|----------------|------|------|-----|
| 0 | Original Issue | 4/17 | KMB | TRD |

PO No. 00514
Eaton Peabody
2nd Fl Renovation
100 Middle St
Portland, Maine
FIRE ALARM RISER
DWG No. FA-003