

29 BLACK POINT ROAD  
SCARBOROUGH, MAINE 04074  
207-883-6307  
WWW.GAWRONTURGEON.COM

**GAWRON  
TURGEON**  
ARCHITECTS, P.C.

**ROBERT HALF**  
100 MIDDLE STREET  
PORTLAND, MAINE

REVISIONS		
#	DATE	DESCRIPTION
1	5.09.17	PROGRESS PRINT
2	6.01.17	PROGRESS PRINT
3	6.06.17	PERMIT DRAWINGS

DATE:	5.09.17
PROJECT #:	040617
DRAWN BY:	DLP
CHECKED BY:	MET
DRAWING SCALE:	AS NOTED

**SHEET TITLE**  
INTERIOR ELEVATION  
KITCHEN MILLWORK  
INTERIOR FINISH  
LEGEND & SCHEDULE

**A922**

© COPYRIGHT 1985-2008  
REPRODUCTION OR USE OF THIS  
DOCUMENT WITHOUT WRITTEN  
PERMISSION OF GAWRON TURGEON  
ARCHITECTS IS PROHIBITED.

**ROBERT HALF**  
040617  
**ROBERT HALF FINISH STANDARDS**

ABBREVIATIONS	
C	CARPET
G	GROUT
N/A	NOT APPLICABLE
P	PAINT
PL	PLASTIC LAMINATE
R	RESILIENT/RUBBER/RUBBER TREAD
SF	SQUARE FEET
SS	SOLID SURFACE/NATURAL STONE
SYD	SQUARE YARD(S)
T	TILE
TBD	TO BE DETERMINED
VCB	VINYL COVE BASE
VCT	VINYL COMPOSITE TILE
VCB	VINYL COVE BASE
WC	WALL COVERING (VINYL/ PAPER)
WCB	WALL COVERING BORDER (VINYL/ PAPER)
WD	WOOD

CODE	MATERIAL	MANUFACTURER	PRODUCT, STYLE AND COLOR	FINISH	REMARKS/ NOTES
C-1	CARPET 10278 FLEX	PATCRAFT	STOCK #00403 COLOR: SPRING	FACTORY	INSTALL BRICK PATTERN
C-2	CARPET Z6475 STUDIO EW24	PATCRAFT	STOCK #00448 COLOR: BLUEPRINT	FACTORY	INSTALL BRICK PATTERN
B-1	VINYL WALL BASE	JOHNSONITE	STOCK #20 COLOR: CHARCOAL	FACTORY	4" VINYL BASE
B-2	VINYL WALL BASE	JOHNSONITE	STOCK #40 COLOR: BLACK	FACTORY	4" VINYL BASE
VCT-1	VINYL COMPOSITION TILE	ARMSTRONG	STOCK #51899 COLOR: COOL WHITE	FACTORY	USE IN CHECKERBOARD PATTERN WITH VCT-2
VCT-2	VINYL COMPOSITION TILE	ARMSTRONG	STOCK #51908 COLOR: PEWTER	FACTORY	USE IN CHECKERBOARD PATTERN WITH VCT-1
SDT-1	STATIC DISSIPATED	ARMSTRONG	SOCK #51951 COLOR: ARMOR GRAY	FACTORY	USE IN TELECOM ROOM ONLY
P-1	PAINT	BENJAMIN MOORE	OC-65 COLOR: CHANTILLY LACE	FACTORY	BASE 1 - EGGSHELL PANTONE #11-4202
P-2	PAINT	BENJAMIN MOORE	OC-65 COLOR: CHANTILLY LACE	FACTORY	BASE 1 - SEMI-GLOSS WALL, TRIM (PAINT GRADE DOORS, DOOR FRAMES AND ALL TRIM) PANTONE #11-4202
P-3	PAINT	BENJAMIN MOORE	1622 COLOR: MINERAL ALLOY	FACTORY	EGGSHELL (OPTIONAL ACCENT COLOR PANTONE #7544)
P-4	PAINT	BENJAMIN MOORE	1600 COLOR: TIMBER WOLF	FACTORY	EGGSHELL (OPTIONAL ACCENT COLOR PANTONE #422)
P-5	PAINT	BENJAMIN MOORE	2129-60 COLOR MT. RAINIER GRAY	FACTORY	EGGSHELL (OPTIONAL ACCENT COLOR PANTONE #538)
WC-1	WALLCOVERING	ARAN ISLES TYPE II	COLOR: BRAY BB-A1-13	FACTORY	
WC-2	WALLCOVERING	ARAN ISLES TYPE II	COLOR: FAIRWAY BB-A1-04	FACTORY	
WT	WALLCOVERING	WALLTALKERS MAG-RITE II	M-248 COLOR: WHITE	FACTORY	
PL-1	PLASTIC LAMINATE	WILSONART	4832-07 COLOR: SATIN OXIDE	FACTORY	MATTE FINISH, IF NOT AVAILABLE, REPLACE WITH PL-2
PL-2 (ALT.)	PLASTIC LAMINATE	WILSONART	4330L-18 COLOR: SATIN STAINLESS	FACTORY	MATTE FINISH
PL-3	PLASTIC LAMINATE	FORMICA	299-58 COLOR: EBONY OXIDE	FACTORY	MATTE FINISH, IF NOT AVAILABLE, REPLACE WITH PL-2
PL-4	PLASTIC LAMINATE	WILSONART	COLOR: STANDARD WHITE	FACTORY	ALL INTERIOR

- NOTES:  
1. PAINT ALL HOLLOW METAL FRAMES  
2. REFER TO OUTLINE SPECIFICATION FOR ADDITIONAL INFORMATION AND SCOPE OF WORK.

**H10 INTERIOR FINISH LEGEND**

NTS
-----

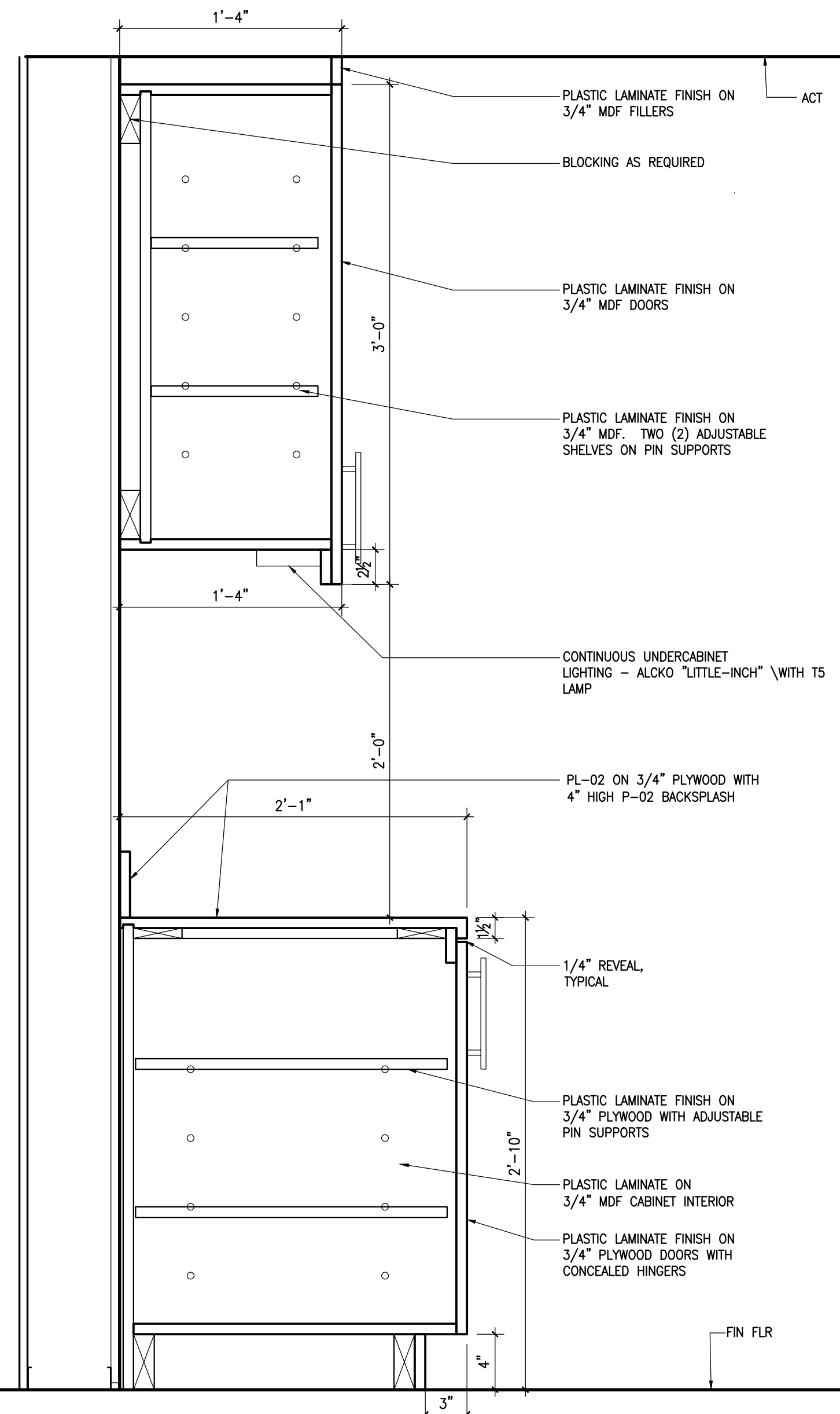
**INTERIOR FINISH SCHEDULE**  
040617  
**ROBERT HALF**

ABBREVIATIONS	
C	CARPET
G	GROUT
N/A	NOT APPLICABLE
P	PAINT
PL	PLASTIC LAMINATE
R	RESILIENT/RUBBER/RUBBER TREAD
SC	SEALED CONCRETE
SF	SQUARE FEET
SS	SOLID SURFACE/NATURAL STONE
SYD	SQUARE YARD(S)
T	TILE
TBS	TO BE SELECTED
VCB	VINYL COVE BASE
VCT	VINYL COMPOSITE TILE
VCB	VINYL COVE BASE
WC	WALL COVERING (VINYL/ PAPER)
WCB	WALL COVERING BORDER (VINYL/ PAPER)
WD	WOOD

Room #	Room Name	Floor		Walls				Trim			Countertop/ Worksurface/ Cabinets		Remarks	
		Floor	Grout	North Wall	East Wall	South Wall	West Wall	Base	Decorative Trim(s)	Door(s)	Door & Window Moulding	Horizontal Plane		Vertical Plane
<b>Partial Third Floor Plan</b>														
C300	CORRIDOR	MATCH EXISTING	N/A	N/A	N/A	MATCH EXISTING	N/A	MATCH EXIST.	MATCH EXISTING	STAIN	MATCH EXISTING	N/A	N/A	PATCH/REPAIR/REPLACE CEILING TILE AND FLOORING FINISH DAMAGED DUE TO CONSTRUCTION.
300	LOBBY	C-1	N/A	P-1	P-1	P-1	P-1	B-1	P-2	STAIN	P-2	P-LAM	N/A	ACCENT FINISH P-5, WC-1 & WC-2, UPHOLSTERY FABRIC TBD
301	RECEPTION	C-1	N/A	P-1	P-1	P-1	P-1	B-1	P-2	P-2	P-2	P-LAM	N/A	ACCENT FINISH P-5, WC-1 & WC-2, UPHOLSTERY FABRIC TBD
302	BULLPEN	C-2	N/A	P-1	P-1	P-1	P-1	B-1	P-2	P-2	P-2	N/A	N/A	ACCENT FINISH P-4
302A	STAGING/BREAK	VCT-1 & VCT-2	N/A	P-1	P-1	P-1	P-1	B-2	P-2	P-2	P-2	PL-1	PL-1	INSTALL VCT IN CHECKERBOARD PATTERN
303	COATS	VCT-1	N/A	P-1	P-1	P-1	P-1	B-2	P-2	P-2	P-2	N/A	N/A	
304	TELCO	SDT-1	N/A	P-1	P-1	P-1	P-1	B-1	P-2	P-2	P-2	N/A	N/A	
305	CONFERENCE ROOM	C-1	N/A	P-1	P-1	P-1	P-1	B-1	P-2	P-2	P-2	N/A	N/A	ACCENT COLOR P-3 ON ONE WALL ONLY
306	STORAGE	C-1	N/A	P-1	P-1	P-1	P-1	B-2	P-2	P-2	P-2	N/A	N/A	
307	INTERVIEW	C-1	N/A	P-1	P-1	P-1	P-1	B-1	P-2	P-2	P-2	N/A	N/A	ACCENT COLOR P-3 ON ONE WALL ONLY
308	INTERVIEW	C-1	N/A	P-1	P-1	P-1	P-1	B-1	P-2	P-2	P-2	N/A	N/A	ACCENT COLOR P-3 ON ONE WALL ONLY

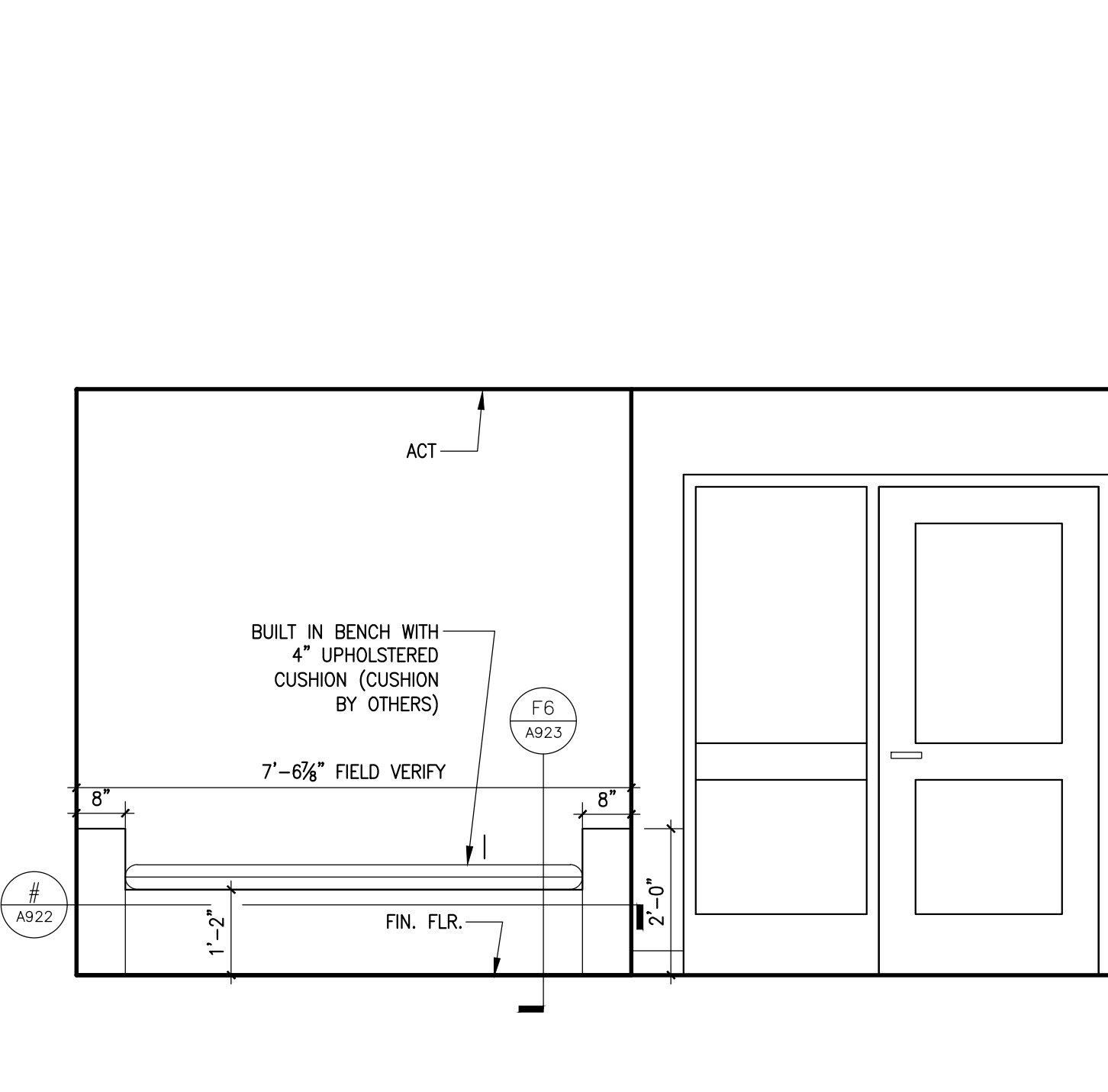
**A10 INTERIOR FINISH SCHEDULE**

NTS
-----



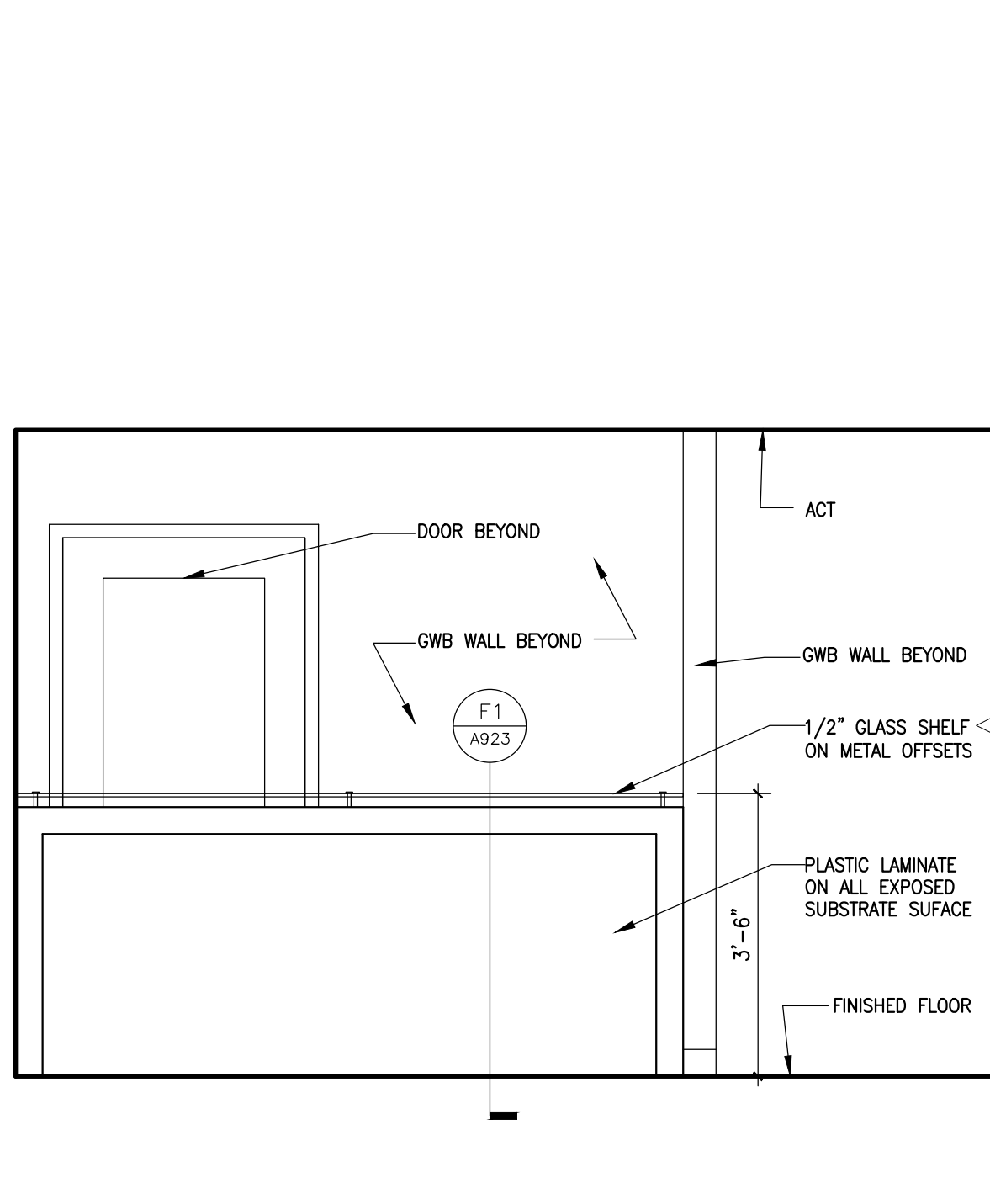
**G1 SECTION THRU MILLWORK**

1/2" = 1'-0"
--------------



**A1 INTERIOR ELEVATION**

1/2" = 1'-0"
--------------



**A6 INTERIOR ELEVATION**

1/2" = 1'-0"
--------------

1'-4"  
3'-0"  
1'-4"  
2'-0"  
2'-1"  
1/4" REVEAL TYPICAL  
2'-10"  
4"  
3"  
ACT  
BLOCKING AS REQUIRED  
PLASTIC LAMINATE FINISH ON 3/4" MDF DOORS  
PLASTIC LAMINATE FINISH ON 3/4" MDF. TWO (2) ADJUSTABLE SHELVES ON PIN SUPPORTS  
CONTINUOUS UNDERCABINET LIGHTING - ALCO "LITTLE-INCH" WITH T5 LAMP  
PL-02 ON 3/4" PLYWOOD WITH 4" HIGH P-02 BACKSPLASH  
1/4" REVEAL TYPICAL  
PLASTIC LAMINATE FINISH ON 3/4" PLYWOOD WITH ADJUSTABLE PIN SUPPORTS  
PLASTIC LAMINATE ON 3/4" MDF CABINET INTERIOR  
PLASTIC LAMINATE FINISH ON 3/4" PLYWOOD DOORS WITH CONCEALED HINGERS  
FIN. FLR.

1 2 3 4 5 6 7 8 9 10 11 12 13 14 15 16 17 18 19 20