

CEILING LEGEND

- ACT1 - CERTAINTED CEILINGS
- PERFORMA CASHMERE CM-450
- 2 x 2 x 3/4 CEILING TILE
- ETR - MATCH EXISTING CEILING HEIGHT

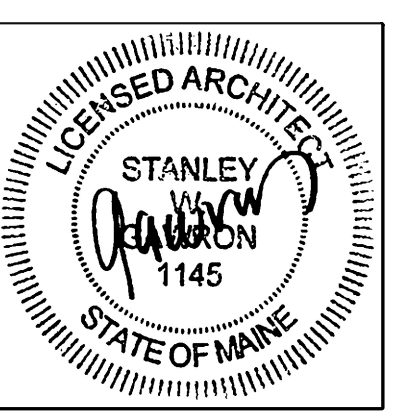
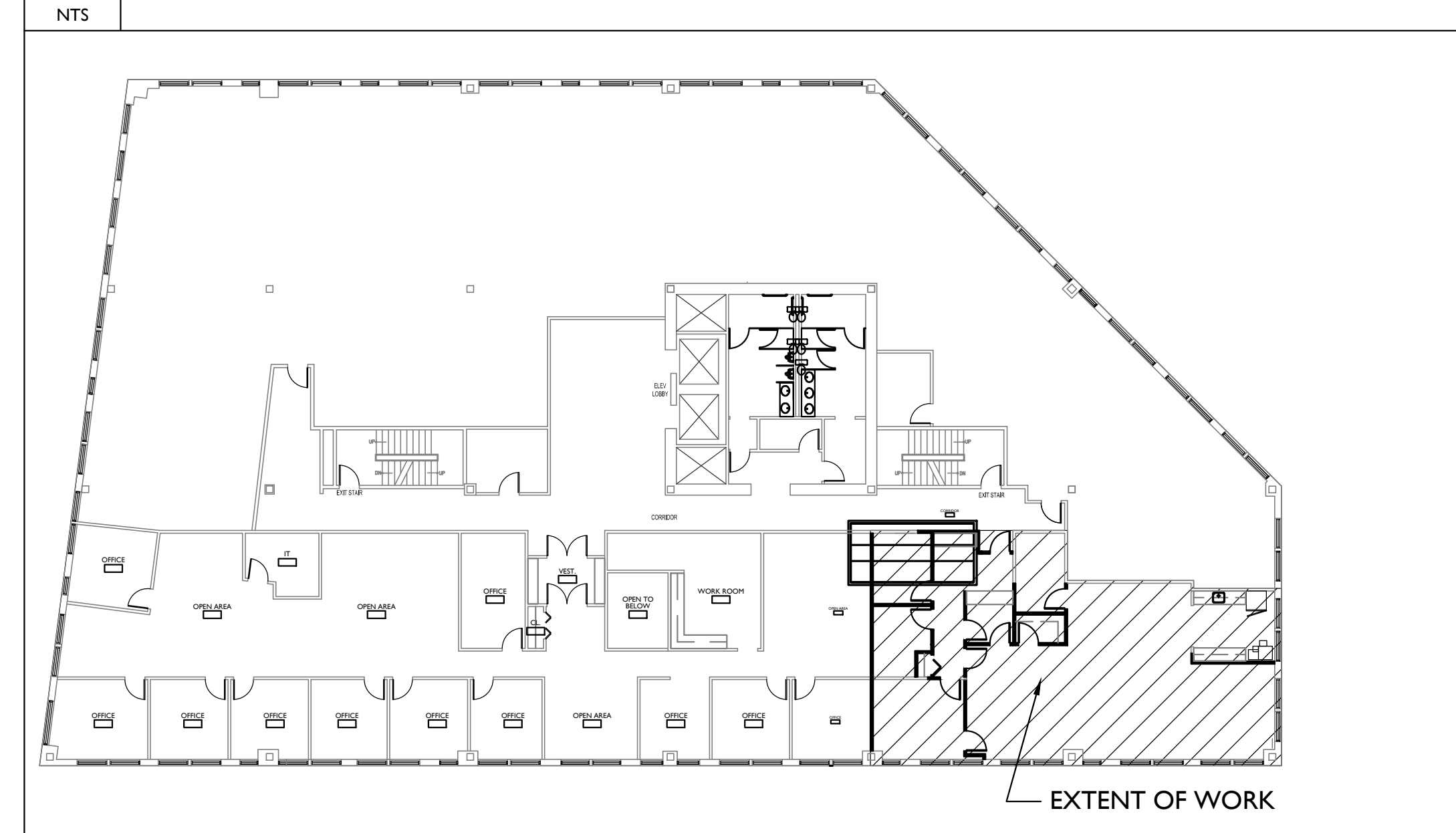
LIGHT FIXTURE /LIFE SAFETY LEGEND

- EMERGENCY BATTERY UNIT
- EXIT SIGN
- HORN/STROBE
- FE FIRE EXTINGUISHER
- 2x4 OVATION BY RENOVA LIGHTING
CATALOGUE #:
L-KVN24-WN-L30-UNV-30-DM-W23-104-C3S-AF
- COOPER LIGHTING
HALO 6" LED DOWNLIGHT
SLD606930WH
- CONTINUOUS UNDERCABINET
LIGHTING - ALCKO "LITTLE-INCH"
WITH TS LAMP

NOTES:

1. CORE DRILL FOR FURNITURE POWER REQUIREMENTS. REFER TO FLOOR PLAN FOR LOCATIONS OF CORE DRILLING.
2. REFER TO OUTLINES SPECIFICATIONS FOR ROBERT HALF ELECTRICAL REQUIREMENTS.

F14 RCP LEGEND/NOTES/LIFE SAFETY



29 BLACK POINT ROAD
SCARBOROUGH, MAINE 04074
207-883-6307
WWW.GAWRONTURGEON.COM

**GAWRON
TURGEON**
ARCHITECTS, P.C.

ROBERT HALF
100 MIDDLE STREET
PORTLAND, MAINE

REVISIONS		
#	DATE	DESCRIPTION
1	5.09.17	PROGRESS PRINT
2	6.01.17	PROGRESS PRINT
3	6.06.17	PERMIT DRAWINGS

DATE:	5.09.17
PROJECT #:	040617
DRAWN BY:	DLP
CHECKED BY:	MET
DRAWING SCALE:	AS NOTED

SHEET TITLE
PARTIAL
THIRD FLOOR
REFLECTED CEILING
PLAN & LIFE SAFETY
LEGEND/NOTES

A301

© COPYRIGHT 1985-2008
REPRODUCTION OR USE OF THIS
DOCUMENT WITHOUT WRITTEN
PERMISSION OF GAWRON TURGEON
ARCHITECTS IS PROHIBITED.