

29 BLACK POINT ROAD  
SCARBOROUGH, MAINE 04074  
207-883-6307  
WWW.GAWRONTURGEON.COM

**GAWRON  
TURGEON**  
ARCHITECTS, P.C.

ROBERT HALF  
100 MIDDLE STREET  
PORTLAND, MAINE

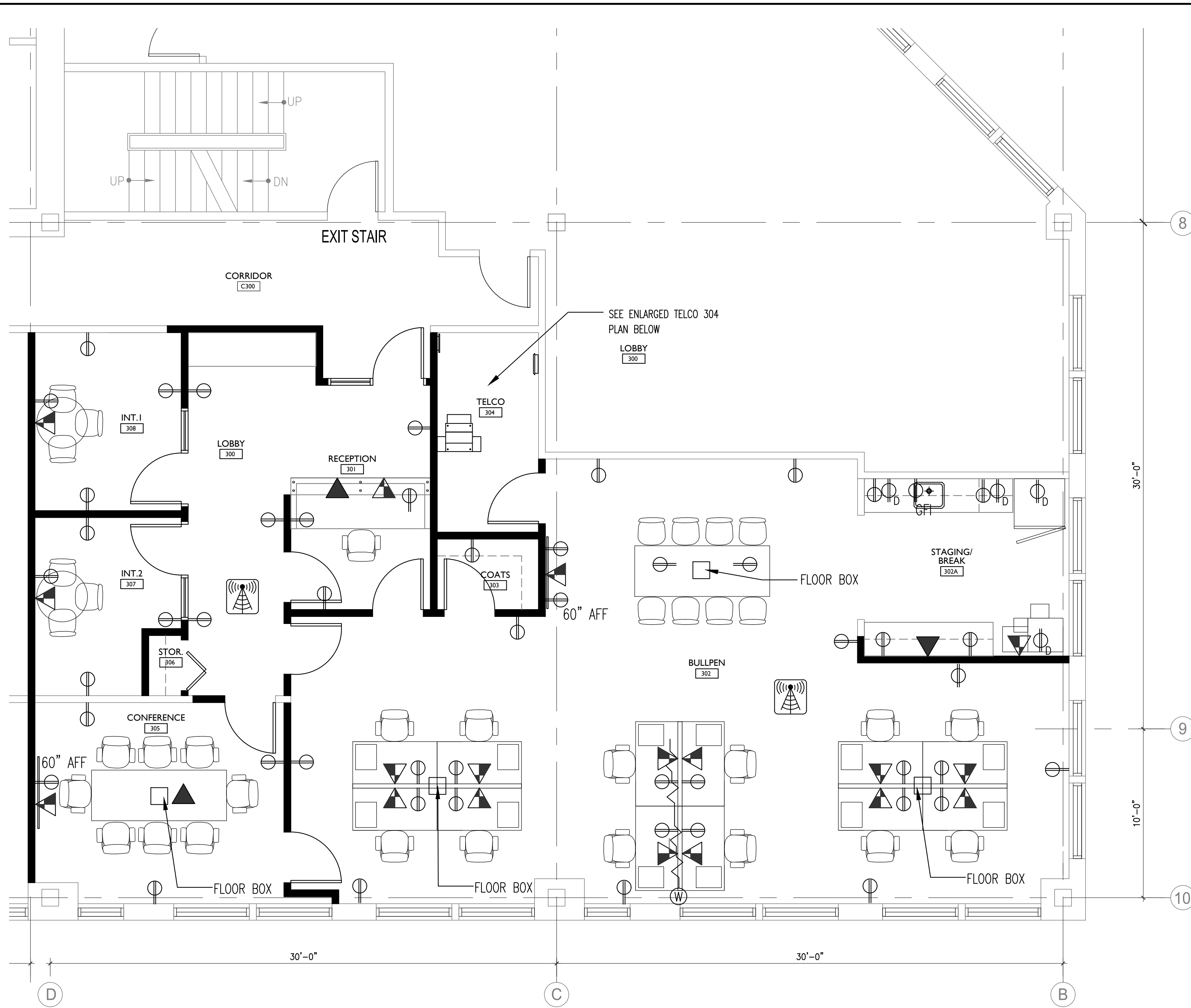
REVISIONS		
#	DATE	DESCRIPTION
1	5.09.17	PROGRESS PRINT
2	6.01.17	PROGRESS PRINT
3	6.06.17	PERMIT DRAWINGS

DATE:	5.09.17
PROJECT #:	040617
DRAWN BY:	DLP
CHECKED BY:	MET
DRAWING SCALE:	AS NOTED

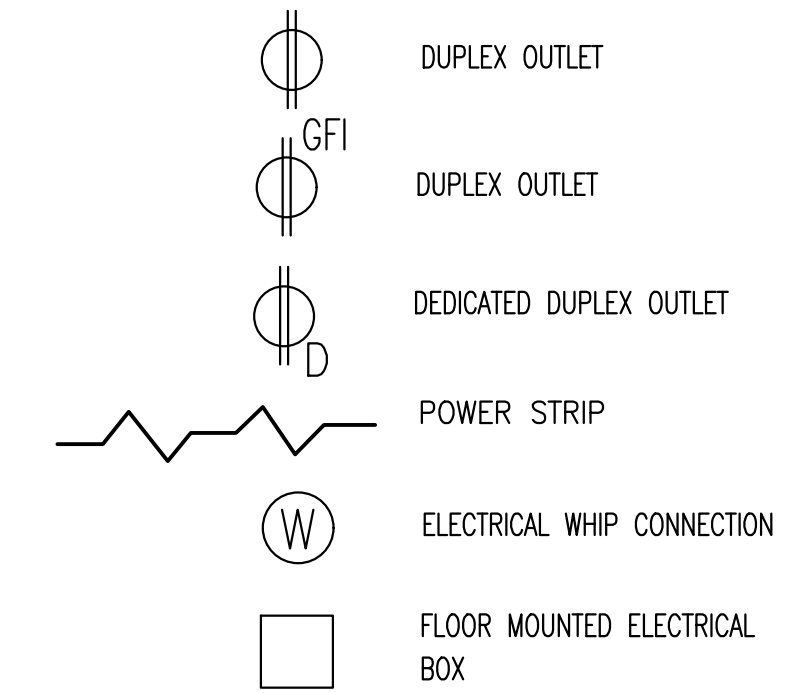
SHEET TITLE  
PARTIAL  
THIRD FLOOR  
POWER PLAN  
LEGEND/NOTES

**A201**

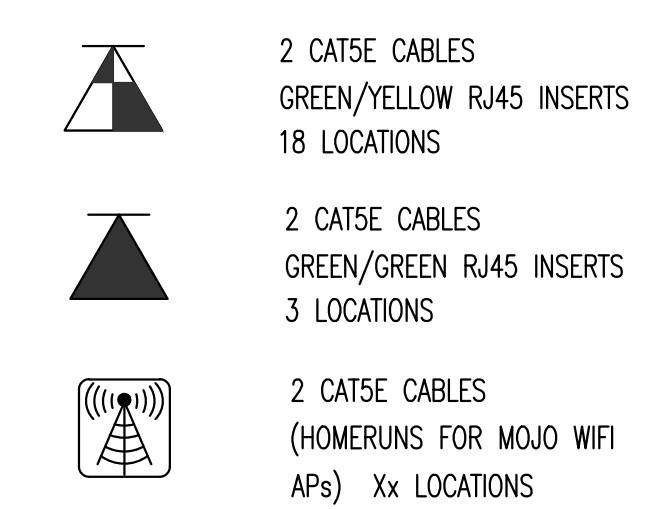
© COPYRIGHT 1985-2008  
REPRODUCTION OR USE OF THIS  
DOCUMENT WITHOUT WRITTEN  
PERMISSION OF GAWRON TURGEON  
ARCHITECTS IS PROHIBITED.



**POWER PLAN LEGEND**



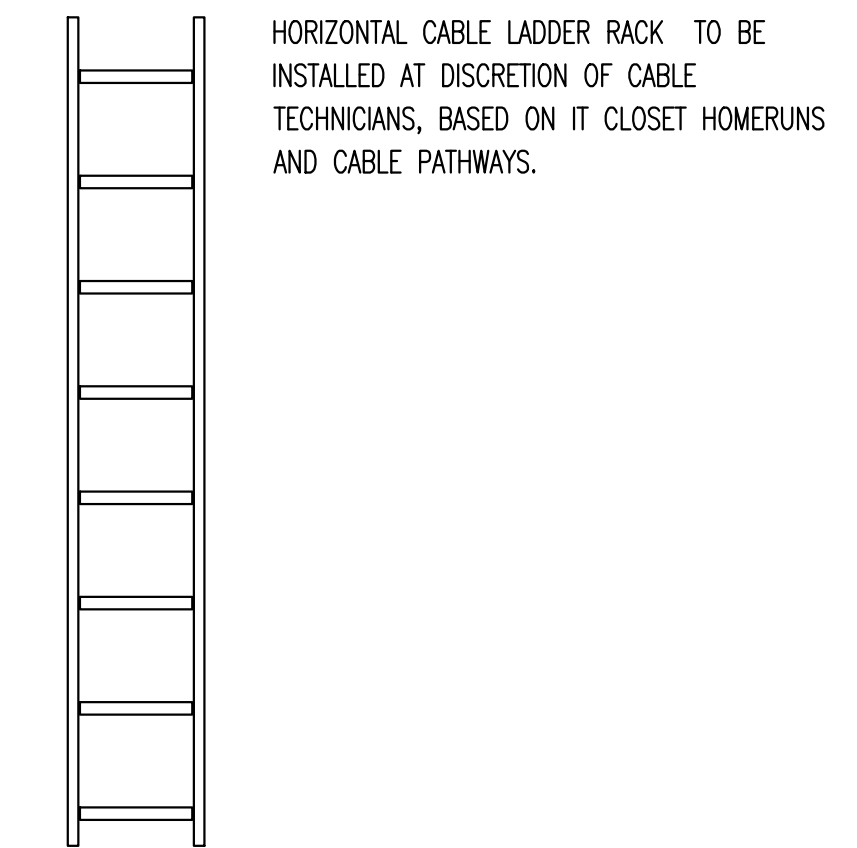
**DATA DROP LEGEND & QUANTITIES**



**NOTES:**

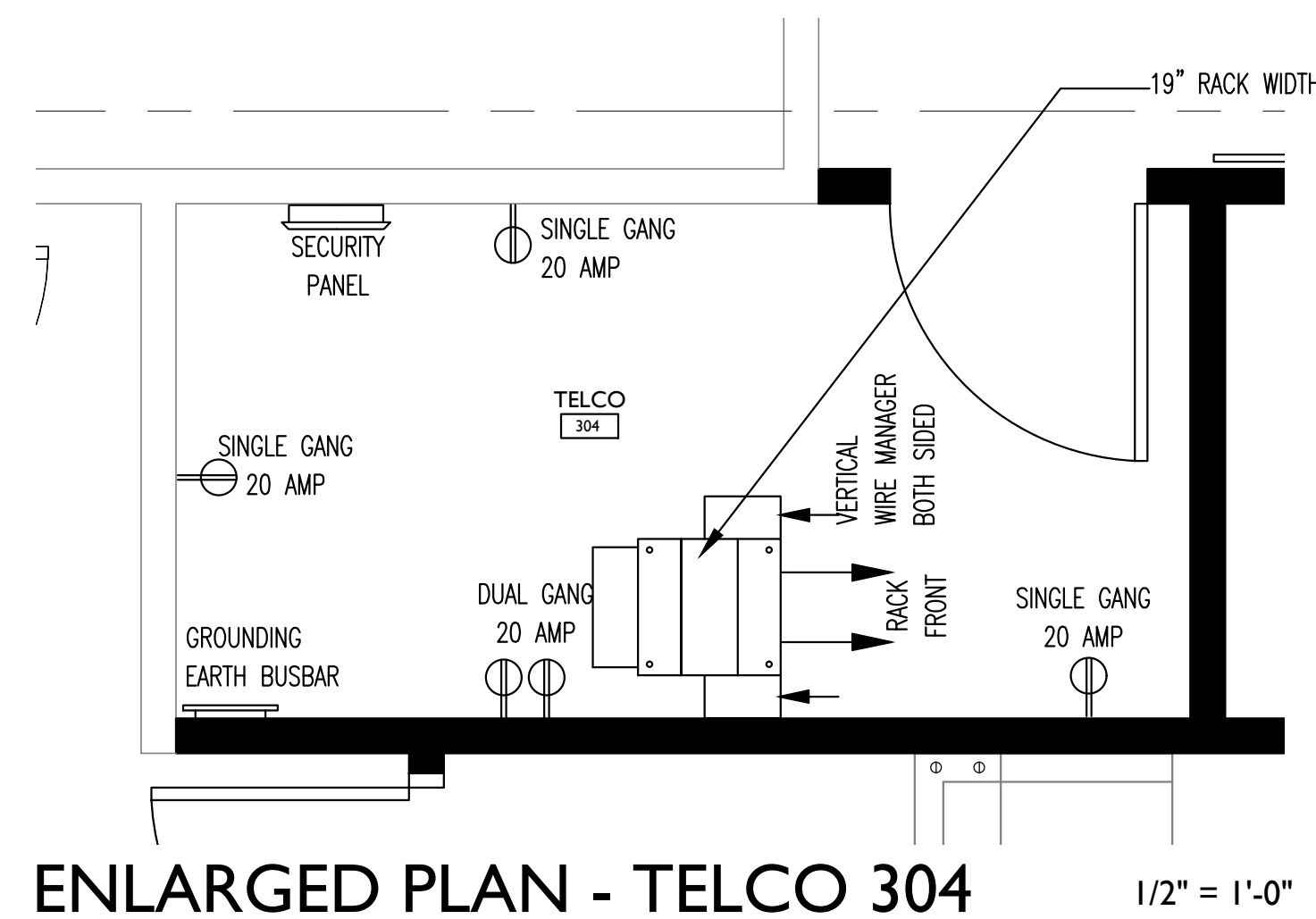
1. ELECTRICAL CONTRACTOR SHALL COORDINATE TELEPHONE & DATA LOCATIONS WITH LOCATIONS OF OUTLETS.
2. G.C. TO COORDINATE ALL SPECIALTY EQUIPMENT WITH TENANTS VENDOR.
3. THE FINAL TERMINATION OF THE DATA AND TELEPHONE SYSTEMS SHALL BE THE RESPONSIBILITY OF THE TENANT.
4. G.C. TO COORDINATE POWER TO TENANT SUPPLIED SYSTEM FURNITURE. POWER WILL BE HARDWIRE WHIP CONNECTIONS OR AS RECOMMENDED BY FURNITURE INSTALLER. TEL/DATA TO BE FED THROUGH SYSTEMS FURNITURE BASE.
5. PRIOR TO CATV AND POWER INSTALLATIONS FOR TVs, CONSULT TENANT FOR MOUNTING HEIGHTS.
6. PROVIDE POWER TO ELECTRIC STRIKES. REFER TO A800/DOOR SCHEDULE FOR DOOR LOCATIONS.

**DIAGRAM OF HORIZONTAL CABLE LADDER JACK - N.T.S.**



**TELCO 304 NOTES:**

1. DIAGRAM DEPICTS A FULLY-LOADED DATA ENVIRONMENT. COOLING BTU/HOUR REQUIREMENT: APPROXIMATELY 12,000 BTU OR ABOUT 1 TON OF COOLING.
2. ALL WALLS OF TELCO 304 IS TO BE LINED BUTT-TIGHT TO CEILING WITH 3/4" FIRE TREATED PAINTED PLYWOOD.
3. A GROUND EARTH BUSBAR SOLUTION SHOULD BE IN PLACE FOR EQUIPMENT RACK AND STATIC DISSIPATIVE VINYL FLOORING AS APPROPRIATE FOR CITY CODES.
4. ALL POWER OUTLETS REQUIRE NEMA 5020R RECEPTACLES. NO TWIST-LOCK OR PROPRIETARY CONNECTORS.

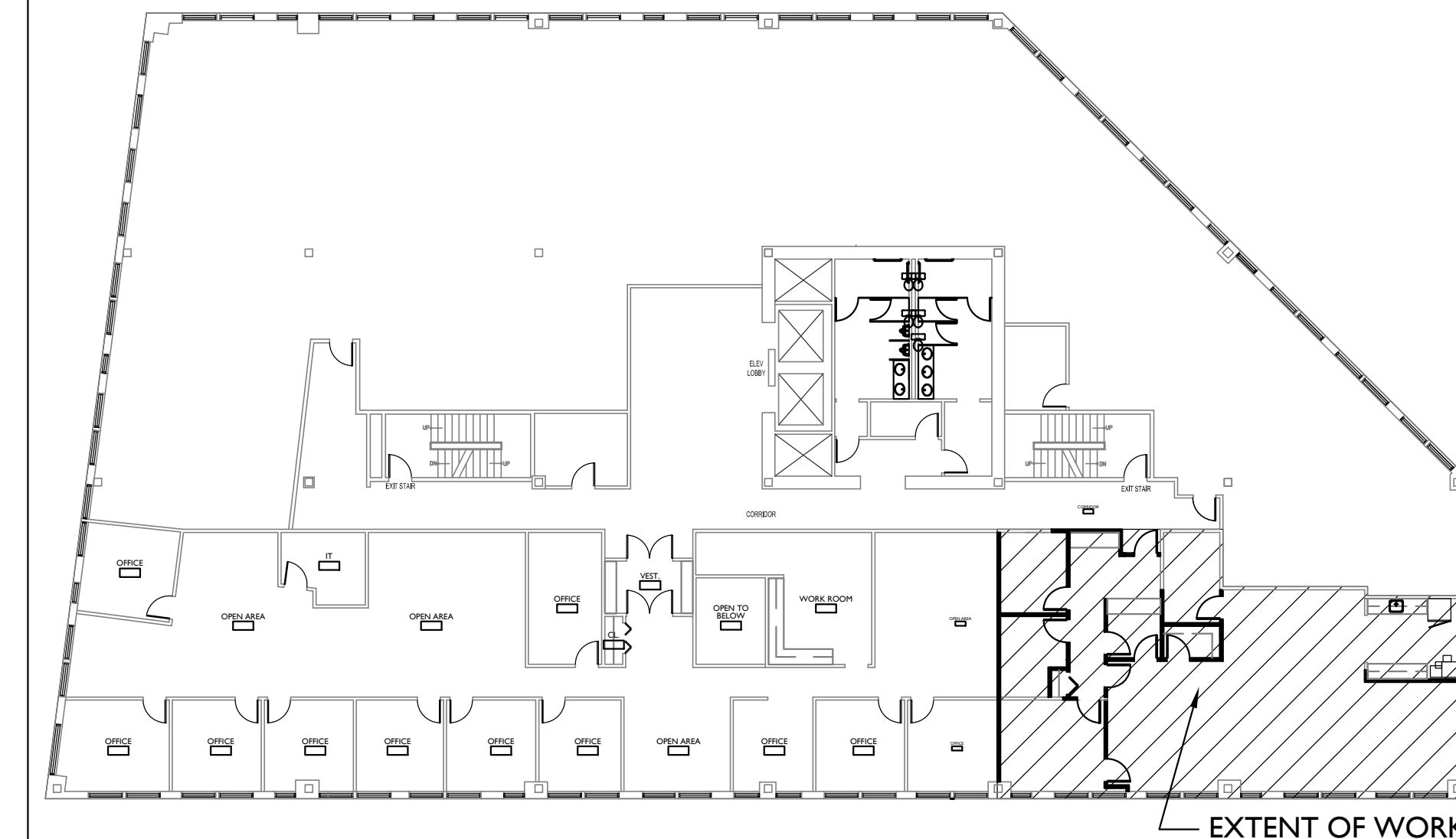


ENLARGED PLAN - TELCO 304

1/2" = 1'-0"

**F14 POWER LEGEND/NOTES**

NTS



**A14 KEY PLAN**

NTS

**A1 PARTIAL THIRD FLOOR POWER PLAN**

1/4" = 1'-0" 1,857 SF

