

29 BLACK POINT ROAD  
SCARBOROUGH, MAINE 04074  
207-883-6307  
WWW.GAWRONTURGEON.COM

**GAWRON  
TURGEON**  
ARCHITECTS, P.C.

**ROBERT HALF**  
100 MIDDLE STREET  
**PORTLAND, MAINE**

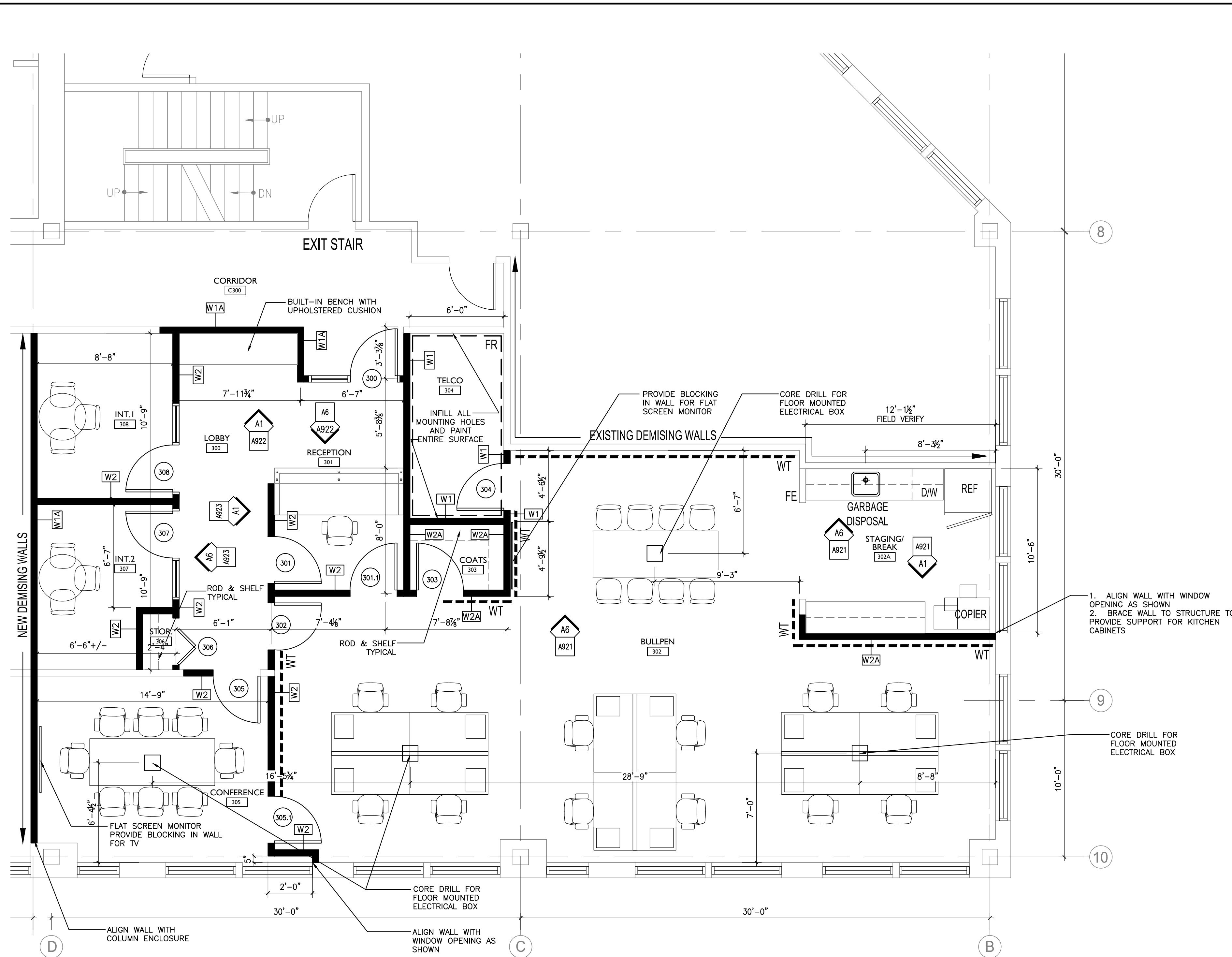
REVISIONS	
#	DESCRIPTION
1	5.09.17 PROGRESS PRINT
2	6.01.17 PROGRESS PRINT
3	6.06.17 PERMIT DRAWINGS

DATE:	5.09.17
PROJECT #:	040617
DRAWN BY:	DLP
CHECKED BY:	MET
DRAWING SCALE:	NTS

**SHEET TITLE**  
PARTIAL  
THIRD FLOOR PLAN  
PARTITION TYPES

**A101**

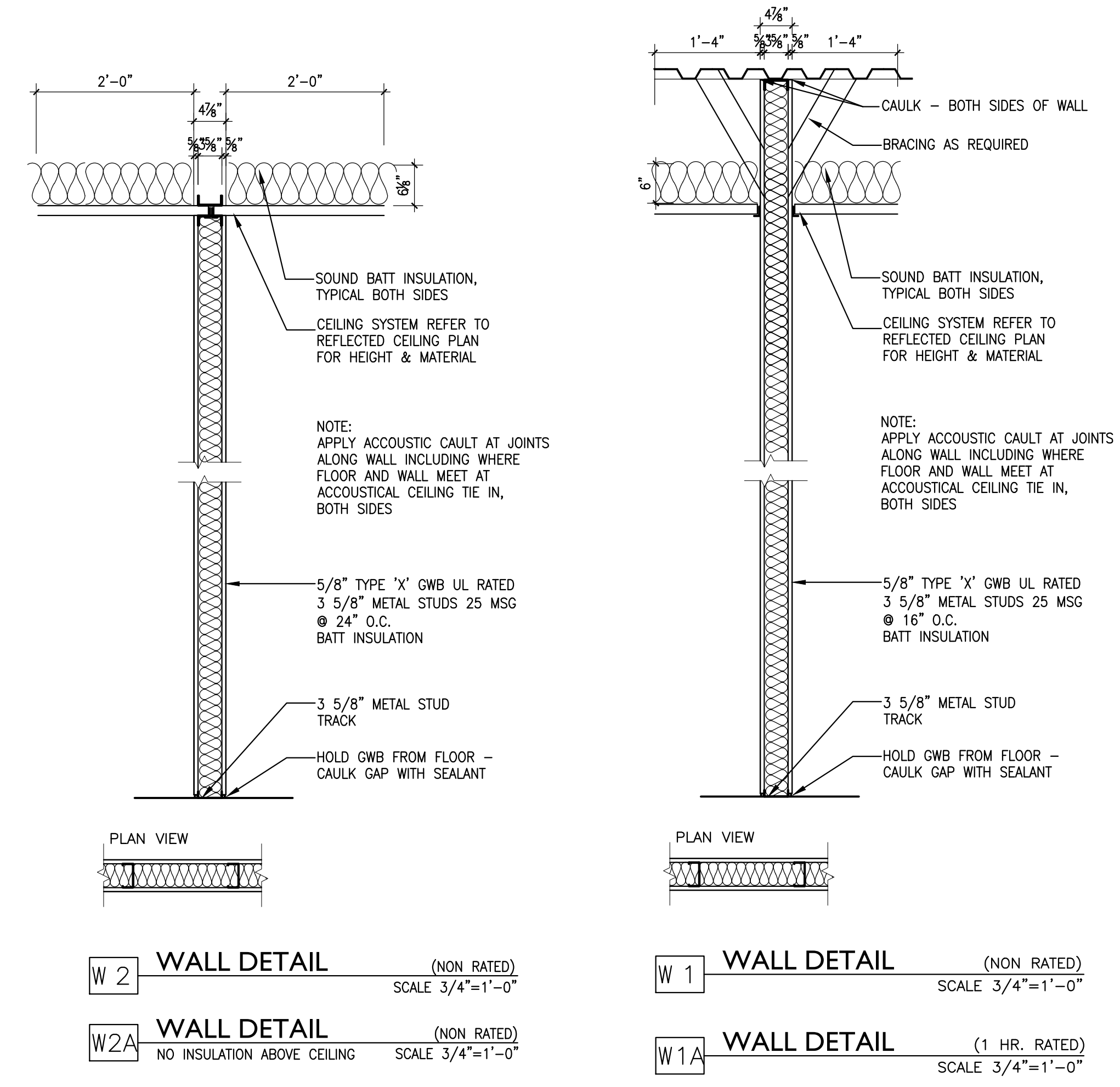
© COPYRIGHT 1985-2008  
REPRODUCTION OR USE OF THIS  
DOCUMENT WITHOUT WRITTEN  
PERMISSION OF GAWRON TURGEON  
ARCHITECTS IS PROHIBITED.



**LEGEND**

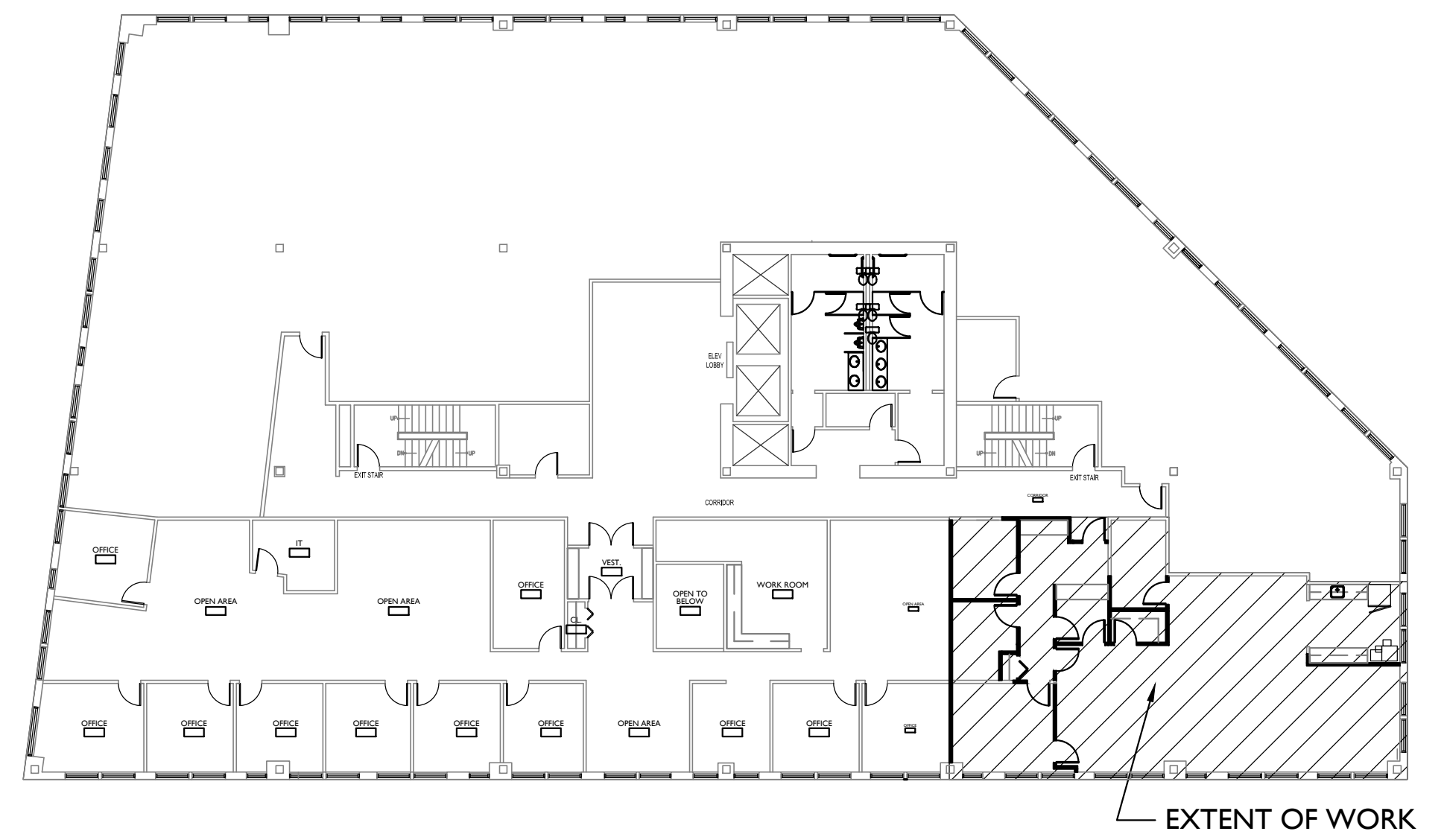
- EXISTING WALLS TO REMAIN
- NEW WALLS
- WALLTALKERS MAGRITE II LOCATION - REFER TO OUTLINE SPECIFICATIONS FOR ACCESSORY TRIM PIECES AND WALL PREP
- FIRE RATED PLYWOOD OVER GWB WALL, FLOOR TO CEILING HEIGHT, PAINTED TO MATCH GWB WALLS

NOTE: FURNITURE - N.I.C.



**F14 PARTITION TYPES**

3/4" = 1'-0"



**A1 PARTIAL THIRD FLOOR PLAN**

1/4" = 1'-0" 1,857 SF



**A14 KEY PLAN**

NTS



PLANN NORTH