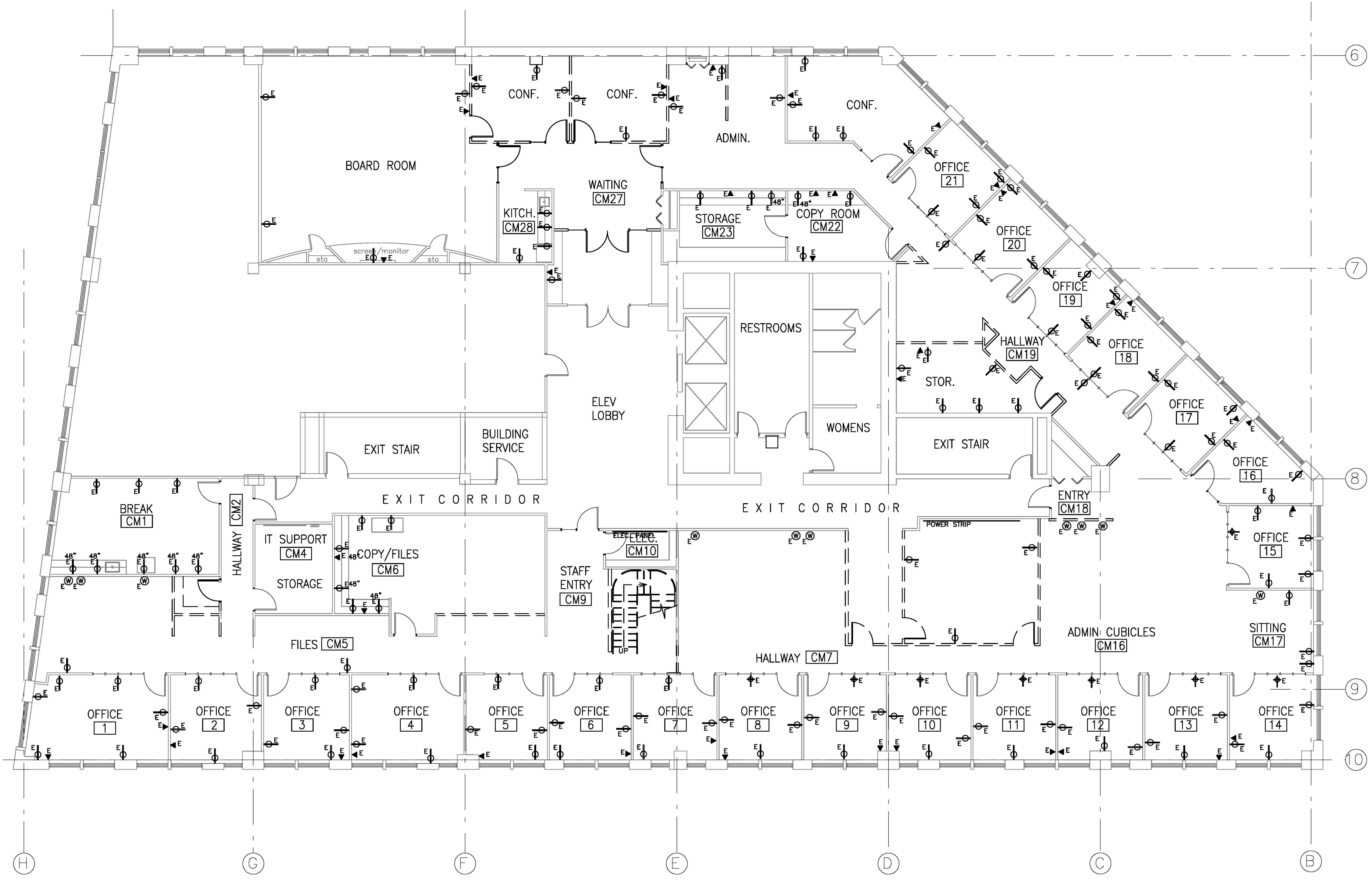




29 BLACK POINT ROAD  
SCARBOROUGH, MAINE 04074  
207-883-6307  
WWW.GAWRONTURGEON.COM

**GAWRON  
TURGEON**  
ARCHITECTS, P.C.

EATON PEABODY  
100 MIDDLE STREET  
PORTLAND, MAINE



**POWER PLAN LEGEND**

- ▼ E EXISTING TEL/DATA OUTLET
- ⊕ E EXISTING DUPLEX OUTLET
- ⊕ E EXISTING QUAD OUTLET
- ⊕ N NEW DUPLEX OUTLET
- ⊕ D NEW DEDICATED DUPLEX OUTLET
- ⊕ WE ELECTRICAL WHIP CONNECTION
- N INDICATES NEW TO BE INSTALLED
- E INDICATES EXISTING - CONFIRM THAT EXISTING IS IN WORKING ORDER
- CAT6E

- NOTES:**
- ELECTRICAL CONTRACTOR SHALL COORDINATE TELEPHONE & DATA LOCATIONS WITH LOCATIONS OF OUTLETS.
  - G.C. TO COORDINATE ALL SPECIALTY EQUIPMENT WITH TENANTS VENDOR.
  - THE FINAL TERMINATION OF THE DATA AND TELEPHONE SYSTEMS SHALL BE THE RESPONSIBILITY OF THE TENANT. GENERAL CONTRACTOR TO INSTALL CAT.5e CABLE FOR THE DATA AND TELEPHONE SYSTEMS. PROVIDE 2 NETWORK DROPS PER OFFICE & WORKSTATION.
  - G.C. TO COORDINATE POWER TO TENANT SUPPLIED SYSTEM FURNITURE. POWER WILL BE HARDWIRE WHIP CONNECTIONS OR AS RECOMMENDED BY FURNITURE INSTALLER. TEL/DATA TO BE FED THROUGH SYSTEMS FURNITURE BASE.
  - PRIOR TO CATV & POWER INSTALLATIONS FOR T.V.'S CONSULT TENANT FOR MOUNTING HEIGHTS.

**REVISIONS**

#	DATE	DESCRIPTION

DATE:	11-29-16
PROJECT #:	080216
DRAWN BY:	DLP
CHECKED BY:	MET
DRAWING SCALE:	AS NOTED

**SHEET TITLE**  
EXISTING  
SECOND FLOOR  
POWER PLAN  
LEGEND

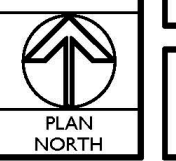
**A200**

**AI EXISTING SECOND FLOOR POWER PLAN**

1/8"=1'-0"

**A17 LEGEND**

1/4"=1'-0"



© COPYRIGHT 1985-2008  
REPRODUCTION OR REUSE OF THIS  
DOCUMENT WITHOUT WRITTEN  
PERMISSION OF GAWRON TURGEON  
ARCHITECTS & INTERIORS