

DEMO NOTES:

REMOVE (E) FLEX DUCTS, (E) SPIN-IN AND VOLUME DAMPERS AS REQUIRED TO ACCOMMODATE THE NEW LAY OUT

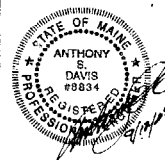
HKTA Architects, Inc.
487 Congress Street, Suite 200
Portland, Maine 04101
phone: 207.774.8010
fax: 207.774.9738
email: info@hkta.com

Consultant



allied
engineering, inc.

Westbrook, Maine 04092-2804
Telephone No: 207-854-8128
E-Mail: info@allied-eng.com
Fax No: 207-854-0803
www.allied-eng.com



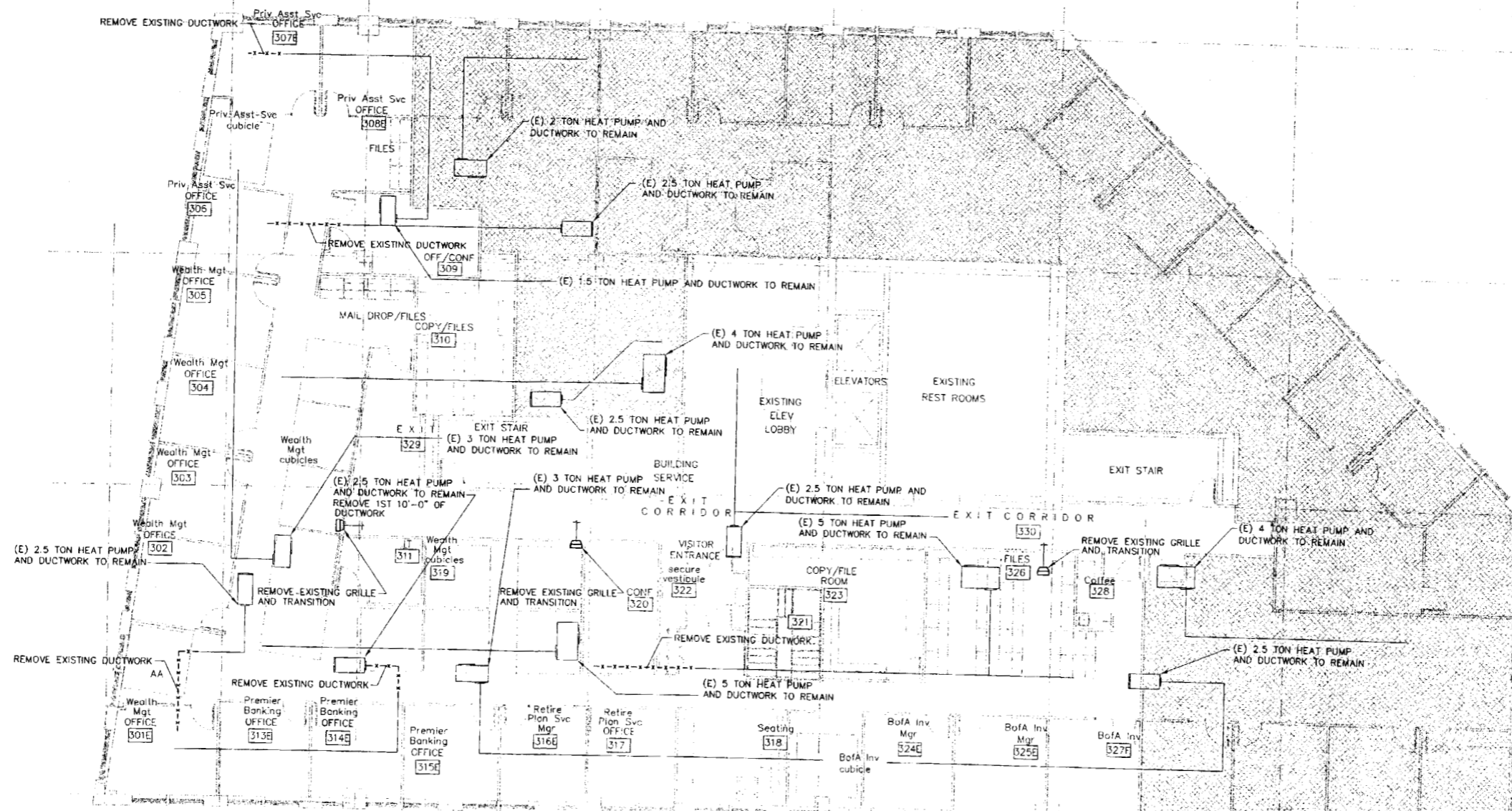
Project Title

**MIDDLE STREET MANAGEMENT
SECOND & THIRD FLOOR
TENANT FIT-UP - WEST TOWER
100 MIDDLE STREET, PORTLAND, MAINE**

Issue/Revision	Date	Mark	Description
Project ID			
CAO File Name	05083M.DWG		
Drawn By	SCL		
Checked By	ASD		
Issue Date	9-12-05		
PIGT Date	9-12-05		
Reviewed by	ASD		
Designed by	SCL		
Submitted by			
Drawing Code			
Sheet Code			

SECOND FLOOR
MECHANICAL
DEMO PLAN

Drawing No.
MD-100
of



DEMO NOTES:
 REMOVE (E) FLEX DUCTS, (E) SPIN-IN
 AND VOLUME DAMPERS AS REQUIRED TO
 ACCOMMODATE THE NEW LAY OUT

A1 MECHANICAL DEMO PLAN - THIRD FLOOR
 1/8" = 1'-0"

Design Firm
 HKTA Architects
 4077 Lehigh Ave., Suite 200
 Portland, Maine 04107
 Phone: 207-774-8810
 Fax: 207-774-8810
 www.hkta.com

Consultant

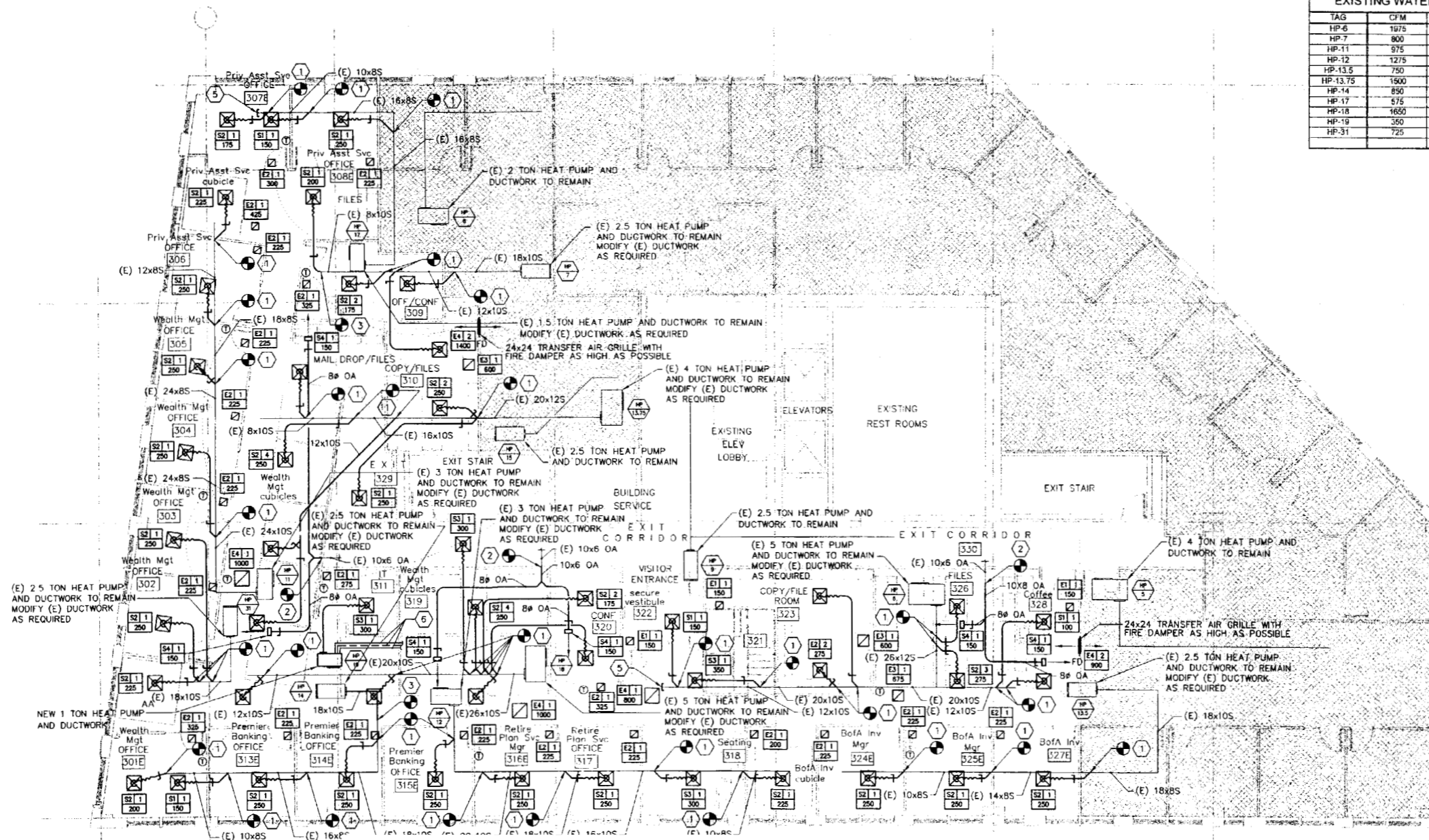
allied
 engineering, inc.
 Westbrook, Maine 04092-2804
 Telephone No: 207-854-8128
 E-Mail: info@allied-eng.com
 Fax No: 207-854-0903
 www.allied-eng.com

Professional Engineer
 ANTHONY S. DAVIS
 #8834
 STATE OF MAINE

Project Title
 MIDDLE STREET MANAGEMENT
 SECOND & THIRD FLOOR
 TENANT FIT-UP - WEST TOWER
 100 MIDDLE STREET, PORTLAND, MAINE

Issue/Revision	Date	Description

Project ID
 CAD File Name: 0803M.DWG
 Drawn By: SCL
 Checked By: ASD
 Issue Date: 8-12-06
 Plot Date: 8-12-06
 Reviewed by: ASD
 Designed by: SCL
 Submitted by:
 Drawing Code:
 Sheet Title:
**THIRD FLOOR
 MECHANICAL
 DEMO PLAN**
 Drawing No: MD-1011



EXISTING WATER SOURCE HEAT PUMP SCHEDULE					
TAG	CFM	TONNAGE	GPM	NOTES	
HP-6	1075	5	14.5	RUN ON HIGH SPEED	
HP-7	900	2.5	5.5	RUN ON LOW SPEED	
HP-11	975	3	6.9	RUN ON LOW SPEED	
HP-12	1275	3	8.3	RUN ON HIGH SPEED	
HP-13.5	750	2.5	5.5	RUN ON LOW SPEED	
HP-13.75	1500	4	11	RUN ON HIGH SPEED	
HP-14	850	2.5	5.5	RUN ON LOW SPEED	
HP-17	575	1.5	4.2	RUN ON HIGH SPEED	
HP-18	1650	5	11	RUN ON LOW SPEED	
HP-19	350	1	5.5	NEW HEAT PUMP SEE SCH	
HP-31	725	2.5	5.5	RUN ON LOW SPEED	

- 1 CONNECT NEW SPIN-IN TO EXISTING MAIN DUCT
- 2 REMOVE EXISTING GRILLE AND CONNECT TO EXISTING OUT SIDE AIR DUCTWORK
- 3 CONNECT TO EXISTING DUCTWORK
- 4 RELOCATE (E) DUCTWORK TIGHT TO BOTTOM OF STEEL
- 5 CAP (E) DUCTWORK
- 6 CONNECT TO (E) 3/4" SUPPLY & RETURN LOOP PIPING CONNECT TO (E) 3/4" CONDENSATE PIPING
- 7 CONNECT TO (E) 1-1/4" SUPPLY & RETURN LOOP PIPING CONNECT TO (E) 3/4" CONDENSATE PIPING

GENERAL NOTES.

- CAP ALL EXISTING OPENINGS IN EXISTING DUCTWORK AND RESEAL SEAMS AS REQUIRED
- CONTROL CONTRACTOR TO COORDINATE WITH THE BUILDING OWNER TO FURNISH EXISTING THERMOSTATS TO BE RELOCATED OR REINSTALLED

SEQUENCE OF OPERATION

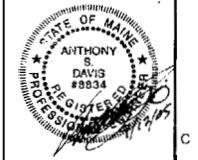
COOLING MODE
THE FAN IS TO RUN CONTINUOUSLY AND THE COMPRESSURE CYCLES ON A CALL FOR COOLING SET POINT 73 DEG. SET POINT IS ADJUSTABLE.

HEATING MODE.
THE FAN IS TO RUN CONTINUOUSLY AND THE COMPRESSURE CYCLES ON A CALL FOR HEATING SET POINT 70 DEG. SET POINT IS ADJUSTABLE.

design Firm
 HKT Architects
 465 Commercial Street, Suite 300
 Portland, Maine 04107
 Phone: 207-774-8893
 Fax: 207-774-0771
 Email: hkt@hkt.com

consultant

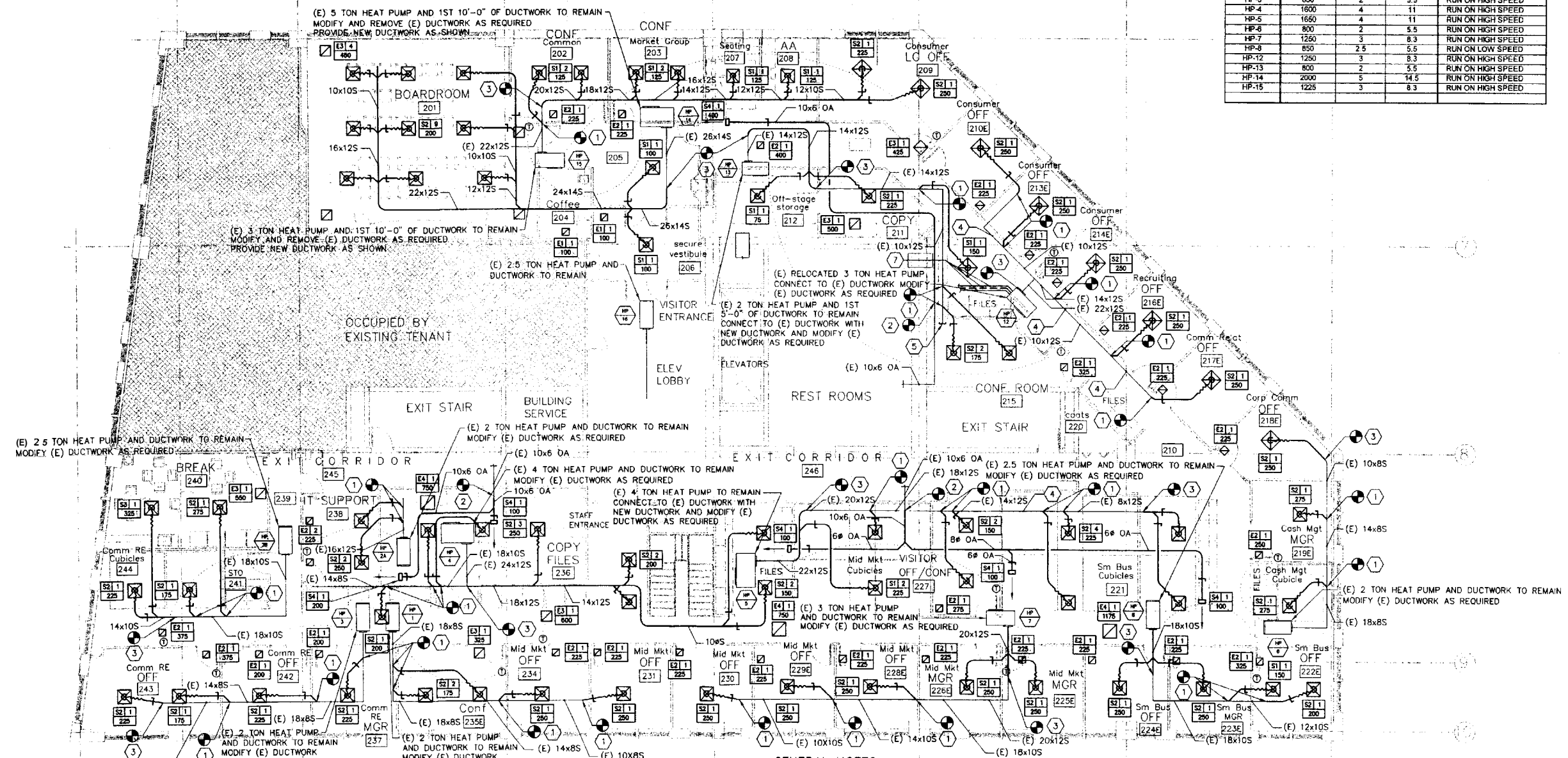
allied
 engineering, inc.
 Westbrook, Maine 04092-2804
 Telephone No: 207-854-8126
 E-Mail: info@allied-eng.com
 Fax No: 207-854-0603
 www.allied-eng.com



Project Title
 MIDDLE STREET MANAGEMENT
 SECOND & THIRD FLOOR
 TENANT FIT-UP - WEST TOWER
 100 MIDDLE STREET, PORTLAND, MAINE

Issue/Revision
 Project ID
 CAD File Name 05083M.DWG
 Drawn By ASD
 Checked By SCL
 Issue Date 9-12-05
 Issue Date 9-12-05
 Reviewed By ASD
 Designed By SCL
 Submitted By
 Drawing Code
 Sheet Title
 THIRD FLOOR
 MECHANICAL PLAN
 Drawing No.
MH-101

TAG	CFM	TONNAGE	GPM	NOTES
HP-1	850	2	5.5	RUN ON HIGH SPEED
HP-2A	500	2	4.2	RUN ON LOW SPEED
HP-2B	1000	2.5	6.9	RUN ON HIGH SPEED
HP-3	850	2	5.5	RUN ON HIGH SPEED
HP-4	1600	4	11	RUN ON HIGH SPEED
HP-5	1650	4	11	RUN ON HIGH SPEED
HP-6	800	2	5.5	RUN ON HIGH SPEED
HP-7	1250	3	8.3	RUN ON HIGH SPEED
HP-8	850	2.5	5.5	RUN ON LOW SPEED
HP-12	1250	3	8.3	RUN ON HIGH SPEED
HP-13	800	2	5.5	RUN ON HIGH SPEED
HP-14	2000	5	14.5	RUN ON HIGH SPEED
HP-15	1225	3	8.3	RUN ON HIGH SPEED

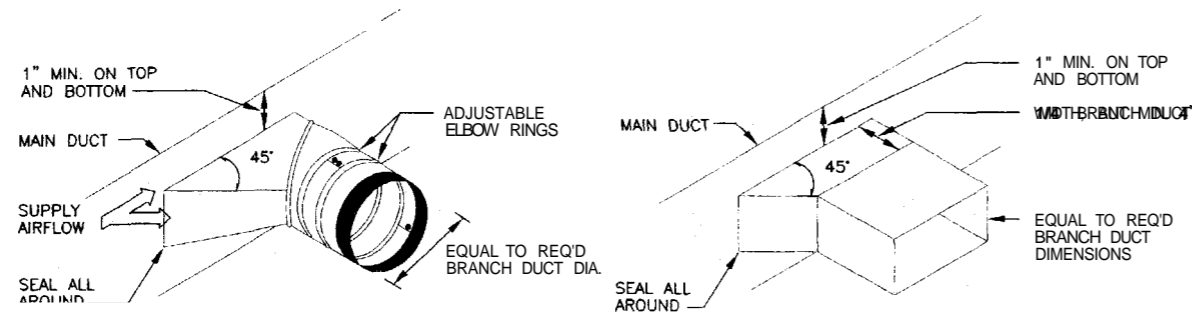


- GENERAL NOTES:**
- CONNECT NEW SPIN-IN TO EXISTING MAIN DUCT.
 - REMOVE EXISTING GRILLE AND CONNECT TO EXISTING OUT SIDE AIR DUCTWORK.
 - CONNECT TO EXISTING DUCTWORK
 - RELOCATE (E) DUCTWORK TIGHT TO BOTTOM OF STEEL
 - CAP (E) DUCTWORK
 - CONNECT TO (E) 3/4" SUPPLY & RETURN LOOP PIPING CONNECT TO (E) 3/4" CONDENSATE PIPING.
 - CONNECT TO (E) 1-1/4" SUPPLY & RETURN LOOP PIPING CONNECT TO (E) 3/4" CONDENSATE PIPING.

SEQUENCE OF OPERATION:

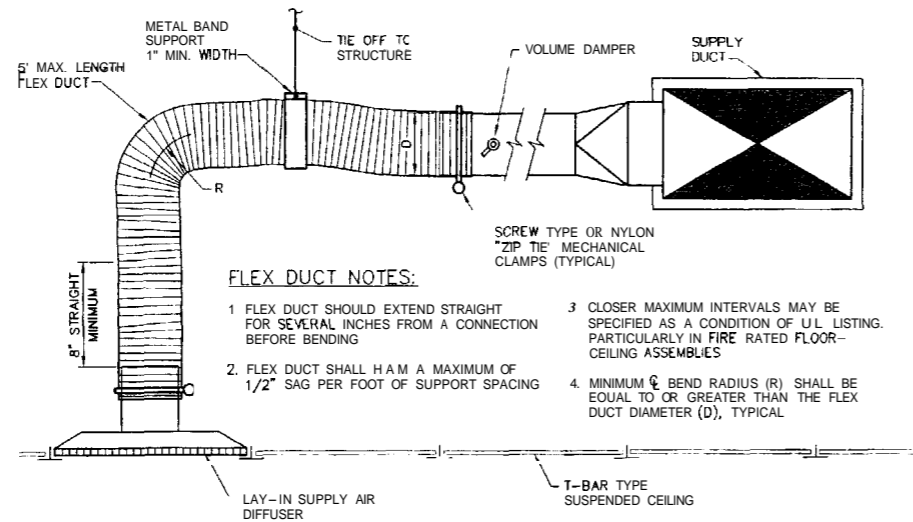
COOLING MODE:
 THE FAN IS TO RUN CONTINUOUSLY AND THE COMPRESSOR CYCLES ON A CALL FOR COOLING SET POINT 73 DEG. SET POINT IS ADJUSTABLE.

HEATING MODE:
 THE FAN IS TO RUN CONTINUOUSLY AND THE COMPRESSOR CYCLES ON A CALL FOR HEATING SET POINT 70 DEG. SET POINT IS ADJUSTABLE.



D1 DETAIL - TYPICAL BRANCH TAKE-OFF FITTING

NONE

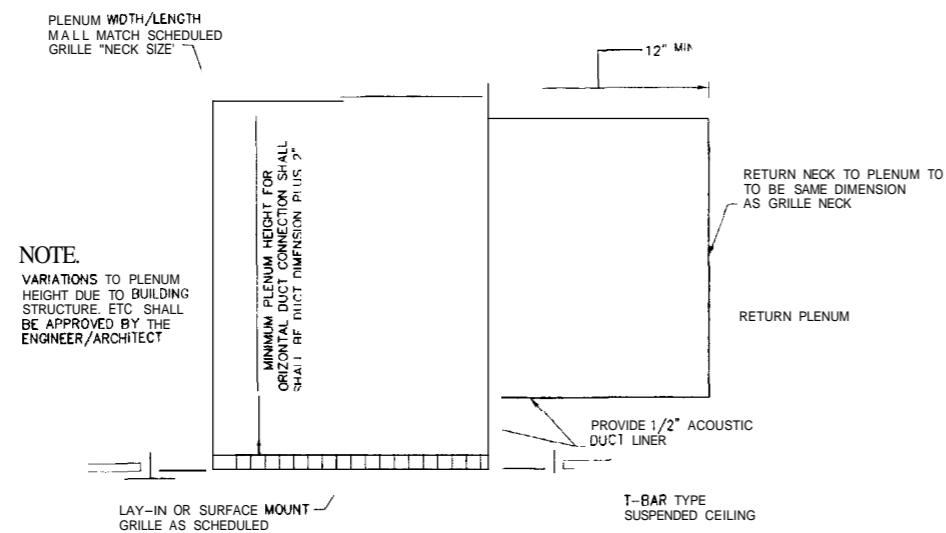


FLEX DUCT NOTES:

- 1 FLEX DUCT SHOULD EXTEND STRAIGHT FOR SEVERAL INCHES FROM A CONNECTION BEFORE BENDING
- 2 FLEX DUCT SHALL HAVE A MAXIMUM OF 1/2" SAG PER FOOT OF SUPPORT SPACING
- 3 CLOSER MAXIMUM INTERVALS MAY BE SPECIFIED AS A CONDITION OF U.L. LISTING, PARTICULARLY IN FIRE RATED FLOOR-CEILING ASSEMBLIES
- 4 MINIMUM ϕ BEND RADIUS (R) SHALL BE EQUAL TO OR GREATER THAN THE FLEX DUCT DIAMETER (D), TYPICAL

B1 DETAIL - SUPPLY AIR BRANCH CONNECTION

NONE



NOTE:

VARIATIONS TO PLENUM HEIGHT DUE TO BUILDING STRUCTURE, ETC SHALL BE APPROVED BY THE ENGINEER/ARCHITECT

A1 DETAIL - PLENUM RETURN AIR REGISTER BOOT

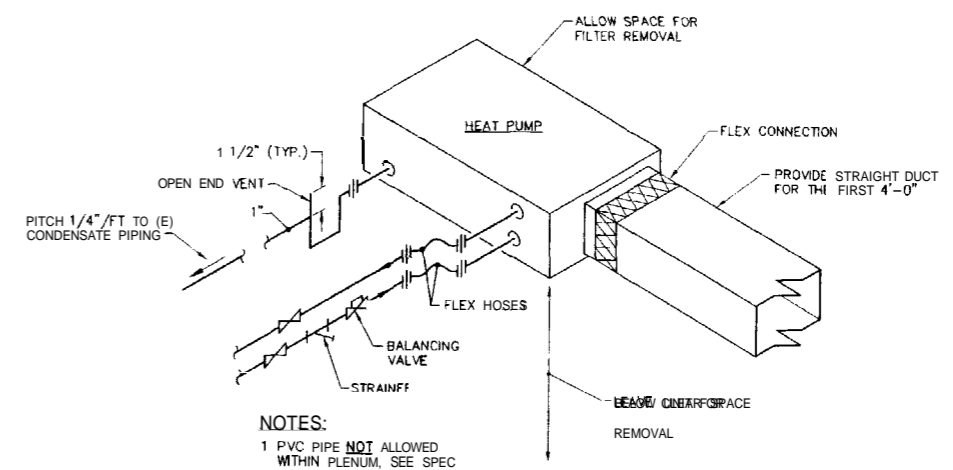
NONE

REGISTERS - GRILLES - DIFFUSERS SCHEDULE									
TAG	TITUS MODEL	TYPE	NECK SIZE	FACE SIZE	CFM RANGE	MAX TOTAL PRESSURE DROP	MAX NG LEVEL	BORDER TYPE	NOTES
S-1	TMS	SQ CEILING SUPPLY DIFFUSER	6" DIA	24" X 24"	0-150	0.07"	18	LAY-IN	
S-2	TMS	SQ CEILING SUPPLY DIFFUSER	8" DIA	24" X 24"	151-275	0.07"	19	LAY-IN	
S-3	TMS	SQ CEILING SUPPLY DIFFUSER	10" DIA	24" X 24"	276-440	0.07"	22	LAY-IN	
S-4	301RS	PLENUM SUPPLY GRILLE		18" X 8"	100-400	0.10"	25	DUCT MTG	
E-1	350RL	RETURN GRILLE, 3/4" SPACING, 0 DEG VANES	8" X 8"	8" X 8"	0-170	0.05"	23	SURFACE	
E-2	350RL	RETURN GRILLE, 3/4" SPACING, 0 DEG VANES	12" X 12"	12" X 12"	171-440	0.05"	27	SURFACE	
E-3	350RL	RETURN GRILLE, 3/4" SPACING, 0 DEG VANES	18" X 18"	18" X 18"	441-670	0.05"	22	SURFACE	
E-4	350RL	RETURN GRILLE, 3/4" SPACING, 0 DEG VANES	24" X 24"	24" X 24"	671-1900	0.05"	22	LAY-IN	

WATER SOURCE HEAT PUMP SCHEDULE		
GENERAL	ITEM	HP-19
	MFR	TRANE
	MODEL	GEH012/1AG110RL006000110000
	SIZE	12
	CONFIGURATION	RIGHT SUPPLY/LEFT RETURN
	WEIGHT, lbs	158
ELECTRICAL	VOLTS-PH-HZ	265/60/1
	MCA	6
	OPD	16
FILTER	PRE-FILTERS	30%-PLAT
	MIN AREA, sq	1.9
	MAX VELOCITY	184
SUPPLY FAN	TYPE	DIRECT DRIVE
	AIRFLOW, cfm	350
	MAX RPM	
	ESP, in.wc	0.8
	HP	1/8
COOLING	ENT AIR, DB/WB	80.8 / 66.2
	POWER KW	1.03
	TMBTUH	12.2
	SMBTUH	9.2
	TONS	1.0
	GPM	2.8
	EWT	66
	LWT	97
	REJECT MBTUH	15.7
	FT HD	7.6
HEATING	ENT AIR, DB/WB	68
	POWER KW	0.96
	MBTUH	13.5
	GPM	2.8
	EWT	66
	LWT	60
	ABSORB MBTUH	10.2
	FT HD	8.3
NOTES	1. PROVIDE VENTURI HOSE KIT FOR MANUAL BALANCING KIT.	

B4 MECHANICAL - SCHEDULES

NONE



NOTES:

1 PVC PIPE NOT ALLOWED WITHIN PLENUM, SEE SPEC

A4 DETAIL - WATER SOURCE HEAT PUMP PIPING

NONE

esign Firm
 HNTK / architects
 100 Middle Street, Portland, Maine 04101
 Phone: 207-774-0615
 Fax: 207-774-0616
 www.hntk.com

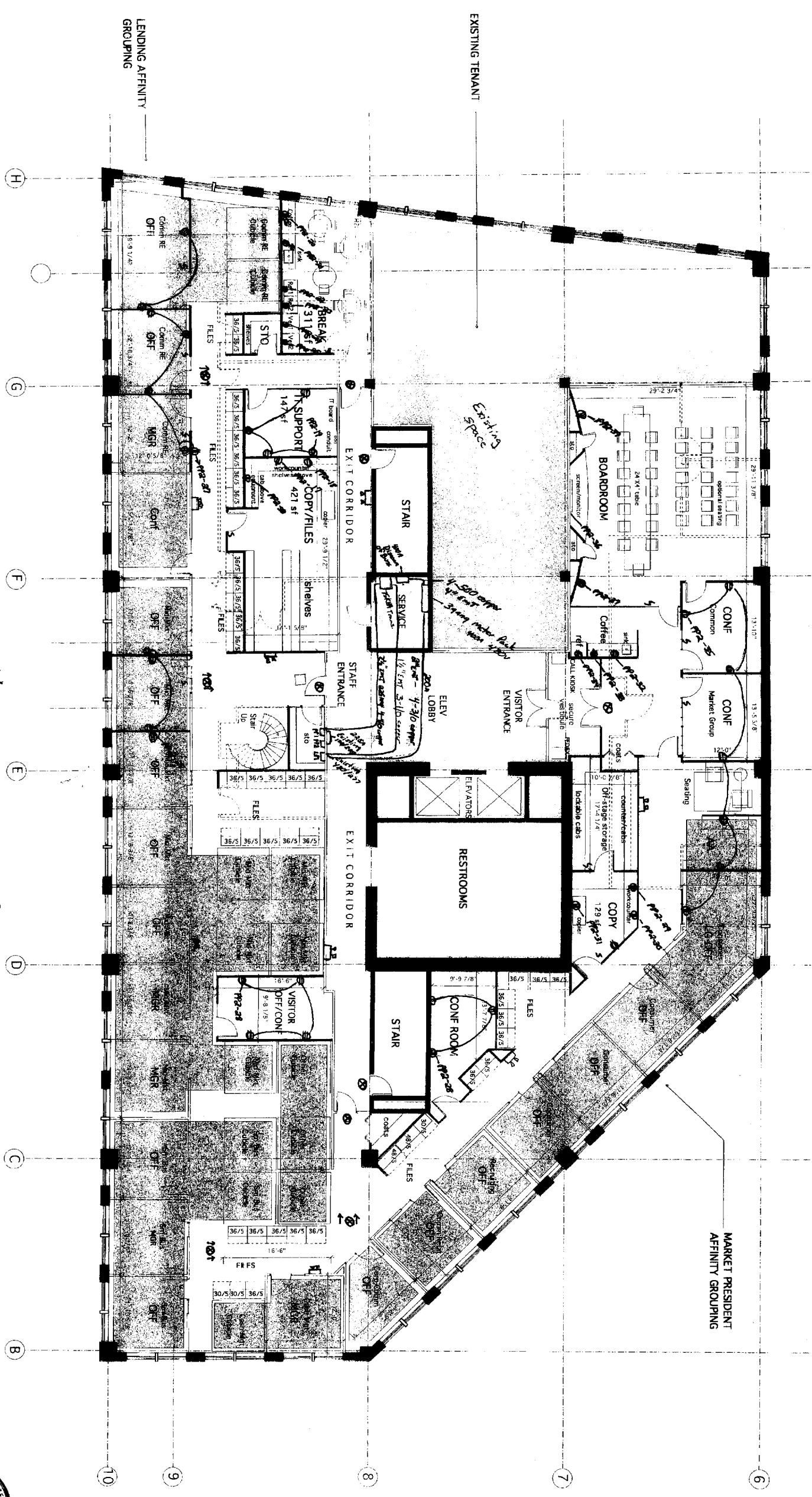
consultant

 allied engineering, inc.
 Westbrook, Maine 04092-2800
 Telephone No: 207-854-9121
 E-Mail: info@allied-eng.com
 Fax No: 207-854-0603
 www.allied-eng.com

STATE OF MAINE
 ANTHONY S. DAVIS
 #8934
 PROFESSIONAL ENGINEER

project title
 MIDDLE STREET MANAGEMENT
 SECOND & THIRD FLOOR
 TENANT FIT-UP - WEST TOWER
 100 MIDDLE STREET, PORTLAND, MAINE

Revision
 File Name: 050234_0_m
 written by: SCL
 checked by: ASD
 Date: 9-12-05
 issued by: ASD
 signed by: SCL
 title block
 Project Code
 Project Title
 MECHANICAL SCHEDULES & DETAILS
 Project No
 VH-500

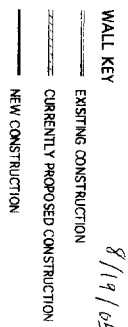


SECOND FLOOR SPACE PLANNING
1/8" = 1'-0"

- Notes
- ① Existing offices lighting and receptacles to remain.
 - ② Lighting to remain or reuse.
 - ③ All emergency and exit lights to be tied with lighting cts.

NOTE:
ACTUAL DIMENSIONS OF SPIRAL STAIR MAY VARY FROM CONCEPT SHOWN.
DETAIL DIMENSIONS AND DESIGN TO BE DETERMINED DURING FINAL DESIGN PHASES.

ELECTRICAL 01

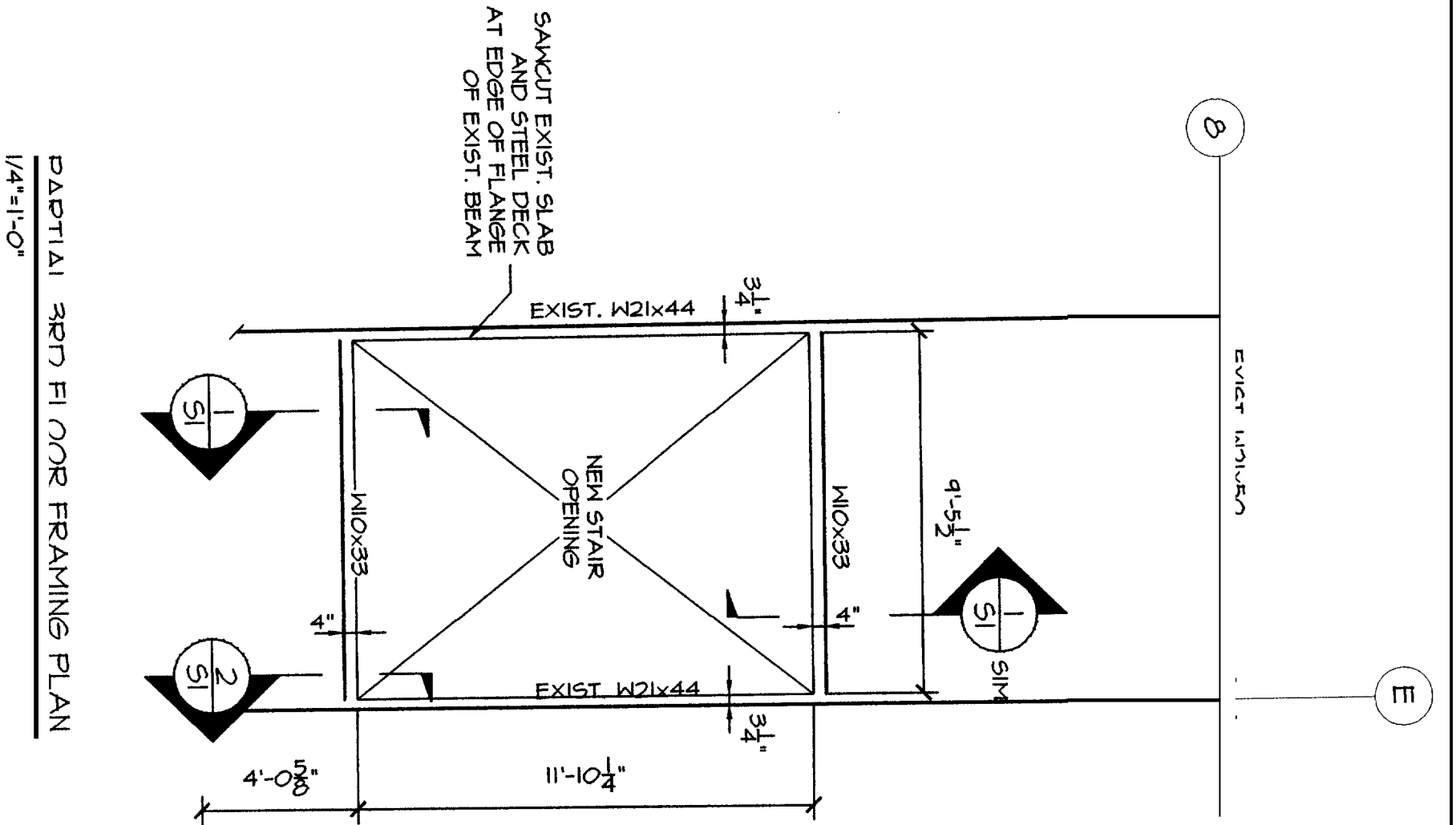


MIDDLE STREET MANAGEMENT
SECOND FLOOR SPACE PLANNING
00 Middle Street Portland, Maine

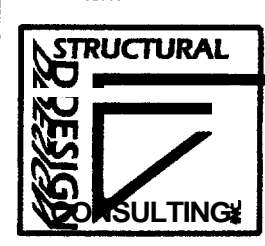
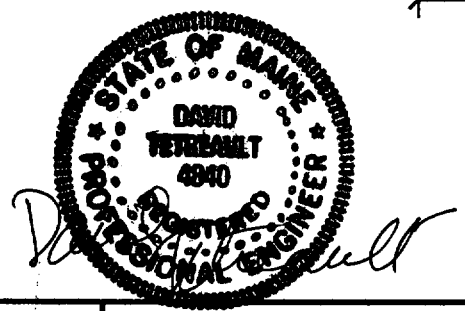
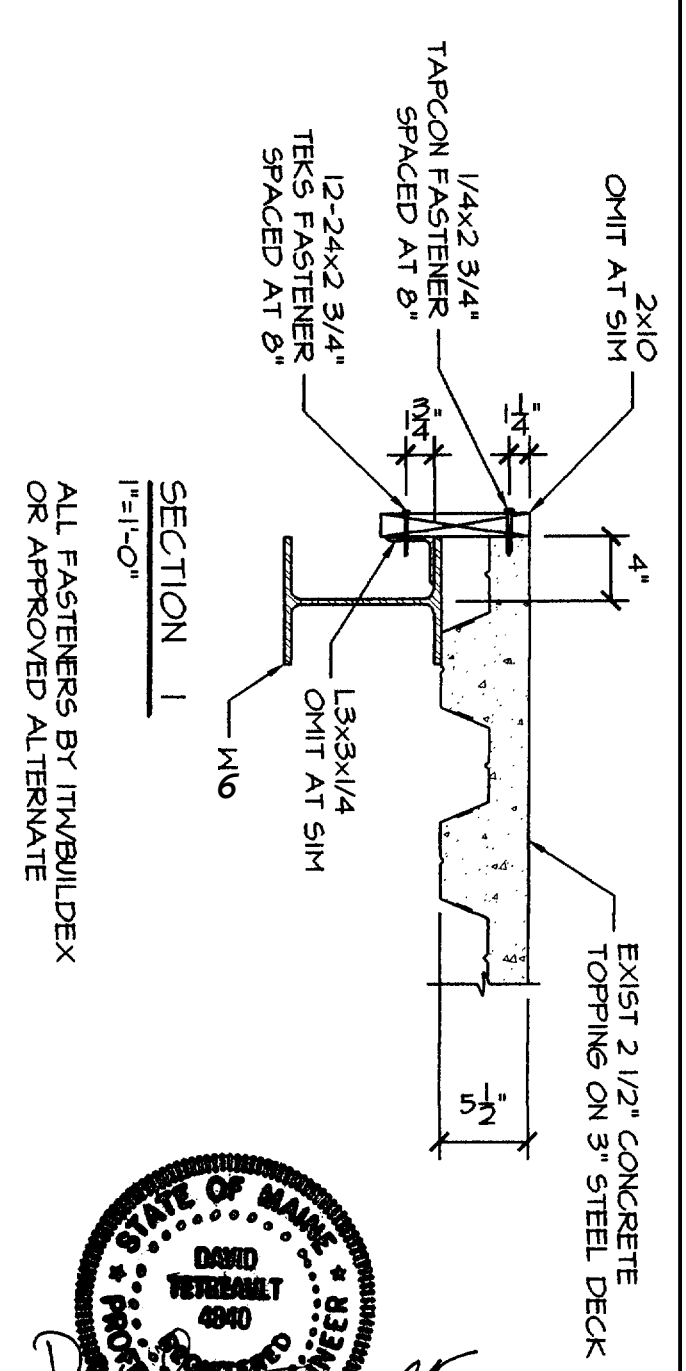
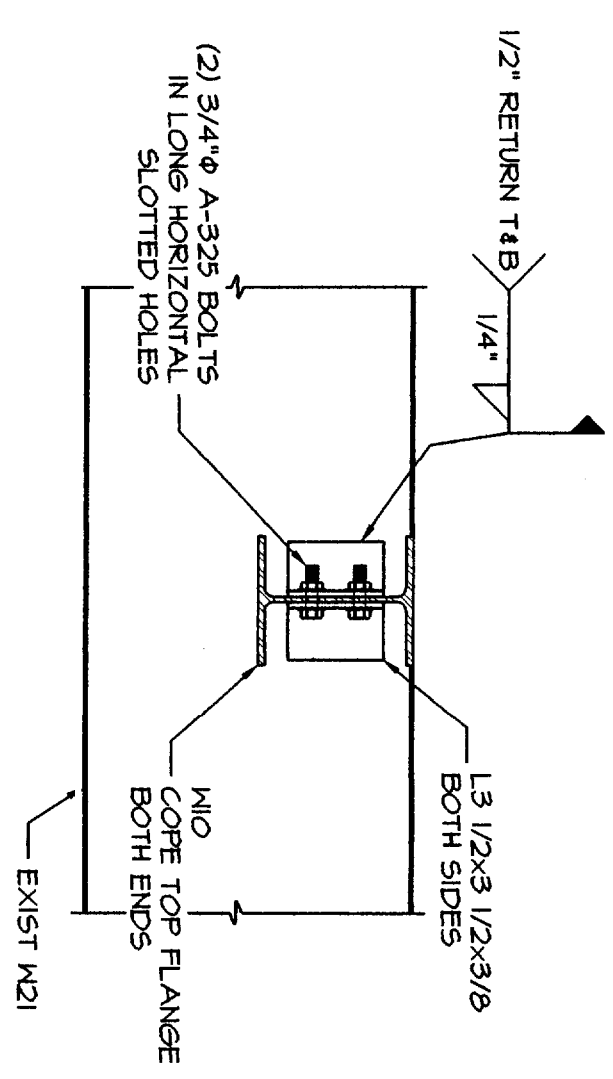
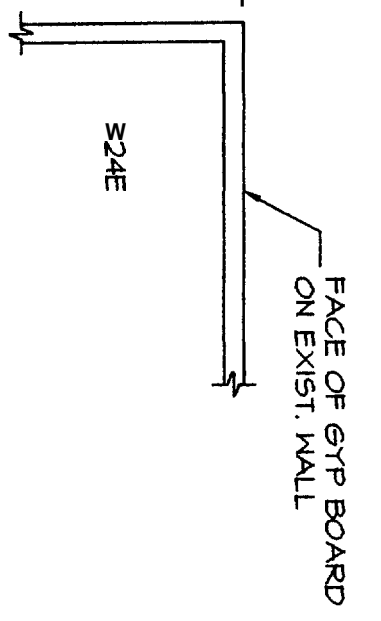
HKTA / architects
4 Milk Street
Portland, Maine 04101
phone: 207.774.6016
fax: 207.774.9128
e-mail: hkta@net.net

DATE: 2/23/05
REVISIONS:
DATE: 4/5/05
DATE: 5/17/05

DRAWING NO.
A-201
SCHEME B - REV



PARTIAL 3RD FLOOR FRAMING PLAN
1/4"=1'-0"

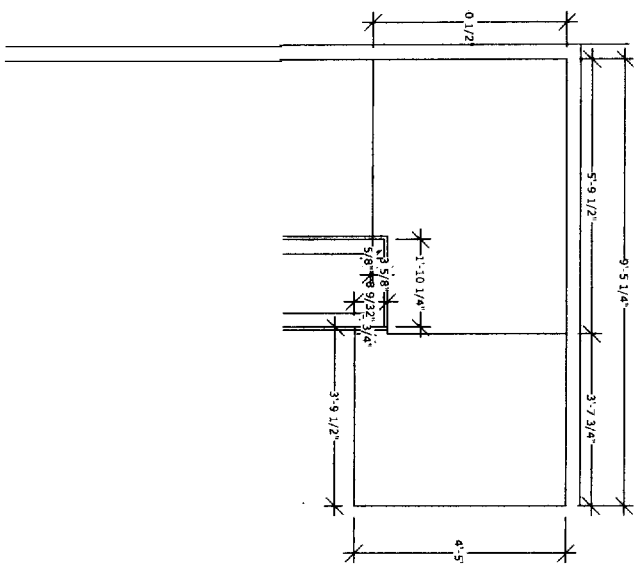
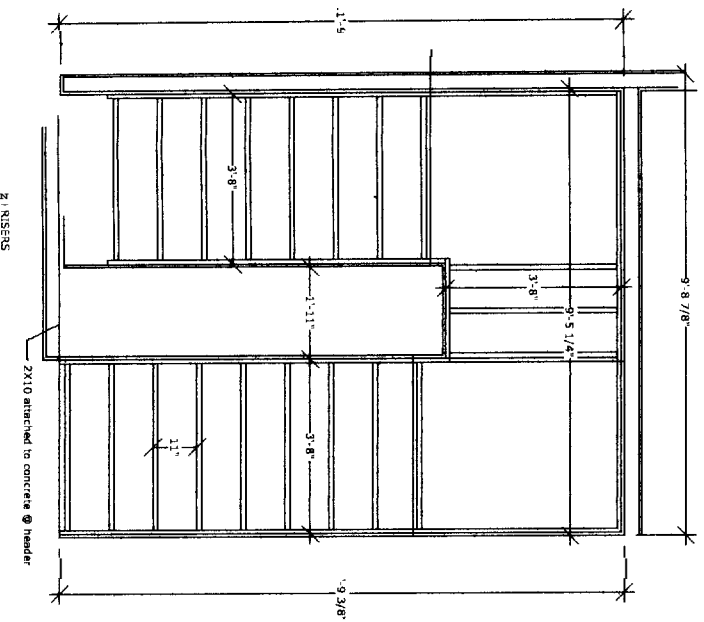
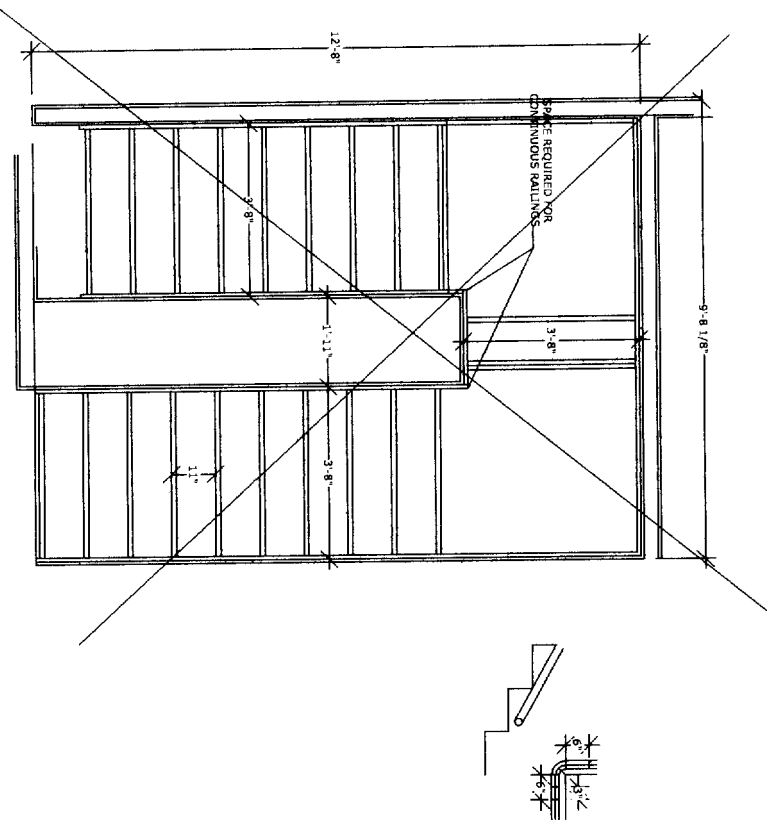
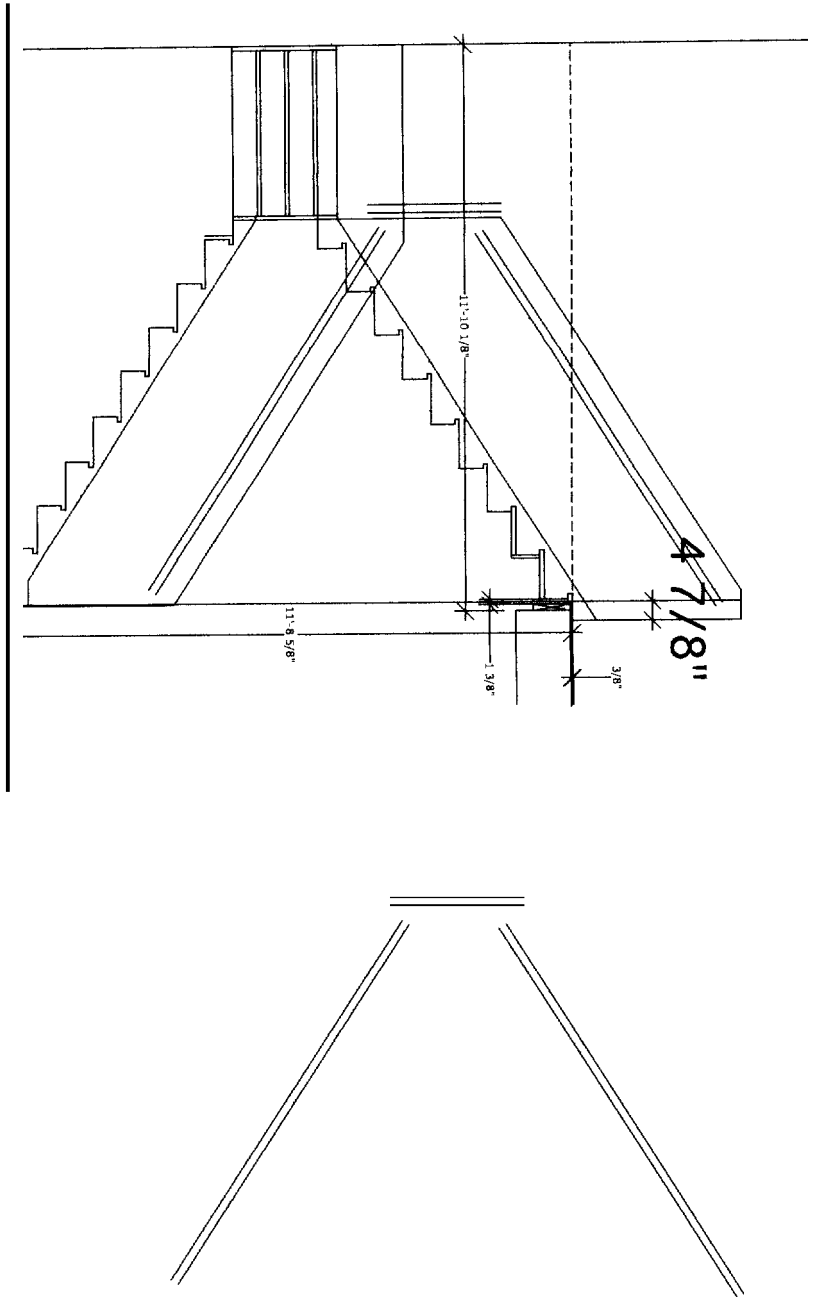


100 MIDDLE STREET

THIRD FLOOR DINING ROOM OPENING

date	revision number
09/13/05	

S1



2 055

STAIRWELL ELEVATION