

Branding / Bank Branch Interior  
Design:  
**THE ELEMENT GROUP**

125 Brewery Lane  
Suite #9  
Portsmouth, NH 03801  
T. 603.319.8951

Structural Engineering:  
**STRUCTURAL INTEGRITY ENGINEERS**

77 Oak Street  
Portland, ME 04101  
T. 207.774.4614

HVAC & plumbing Engineering:  
**MECHANICAL SYSTEMS ENGINEERS**

Royal River Center, Unit 10  
10 Forest Falls Drive  
Yarmouth, ME 04096  
T. 207.846.1441

Electrical Engineering:  
**SWIFT CURRENT ENGINEERING**

Royal River Center, Unit 4B  
10 Forest Falls Drive  
Yarmouth, ME 04096  
T. 207.847.9280



**Portland Branch**

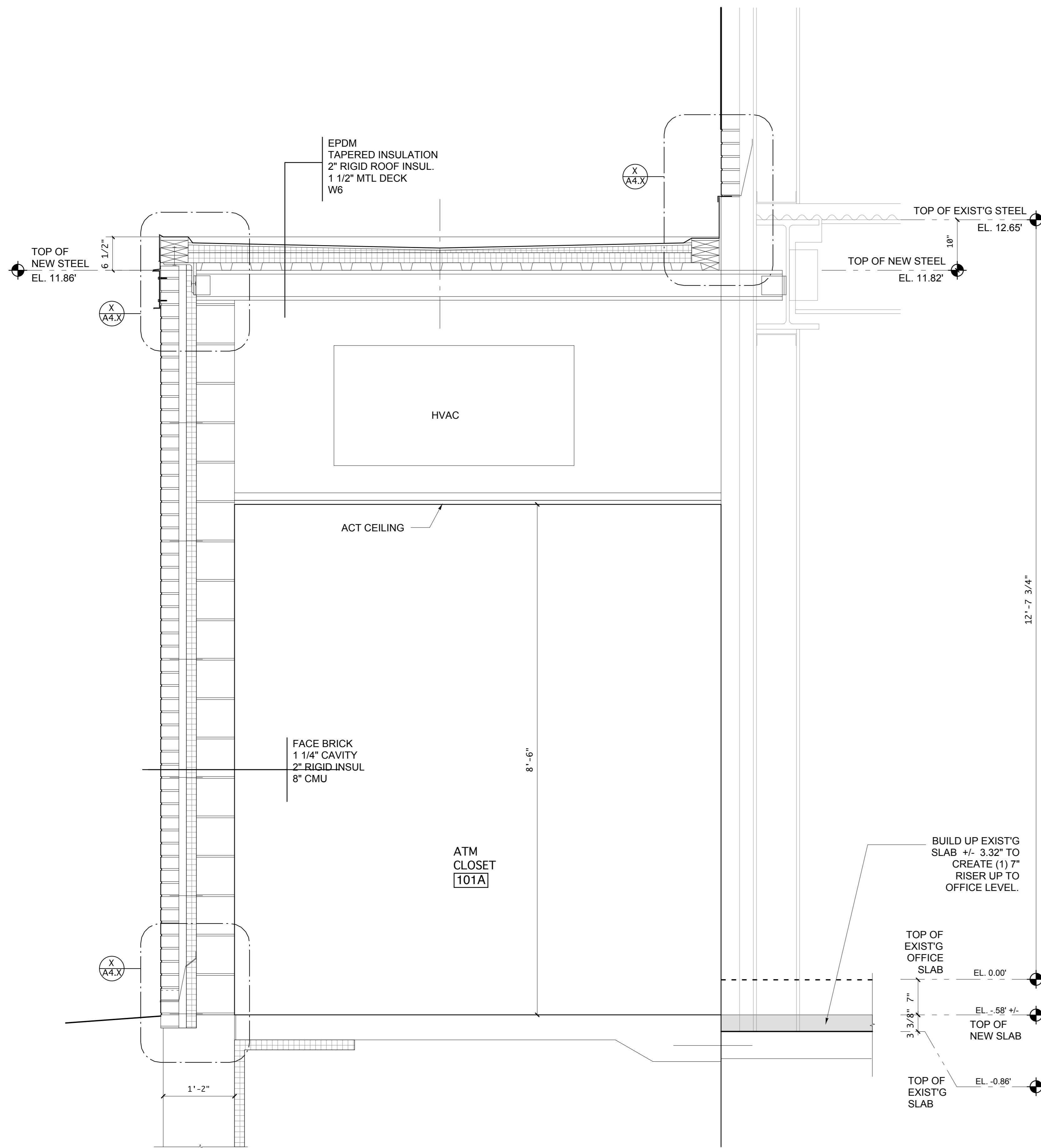
27 Pearl Street  
1st Floor Tenant Space  
Portland, Maine

PERMIT SET- NOT FOR CONSTRUCTION

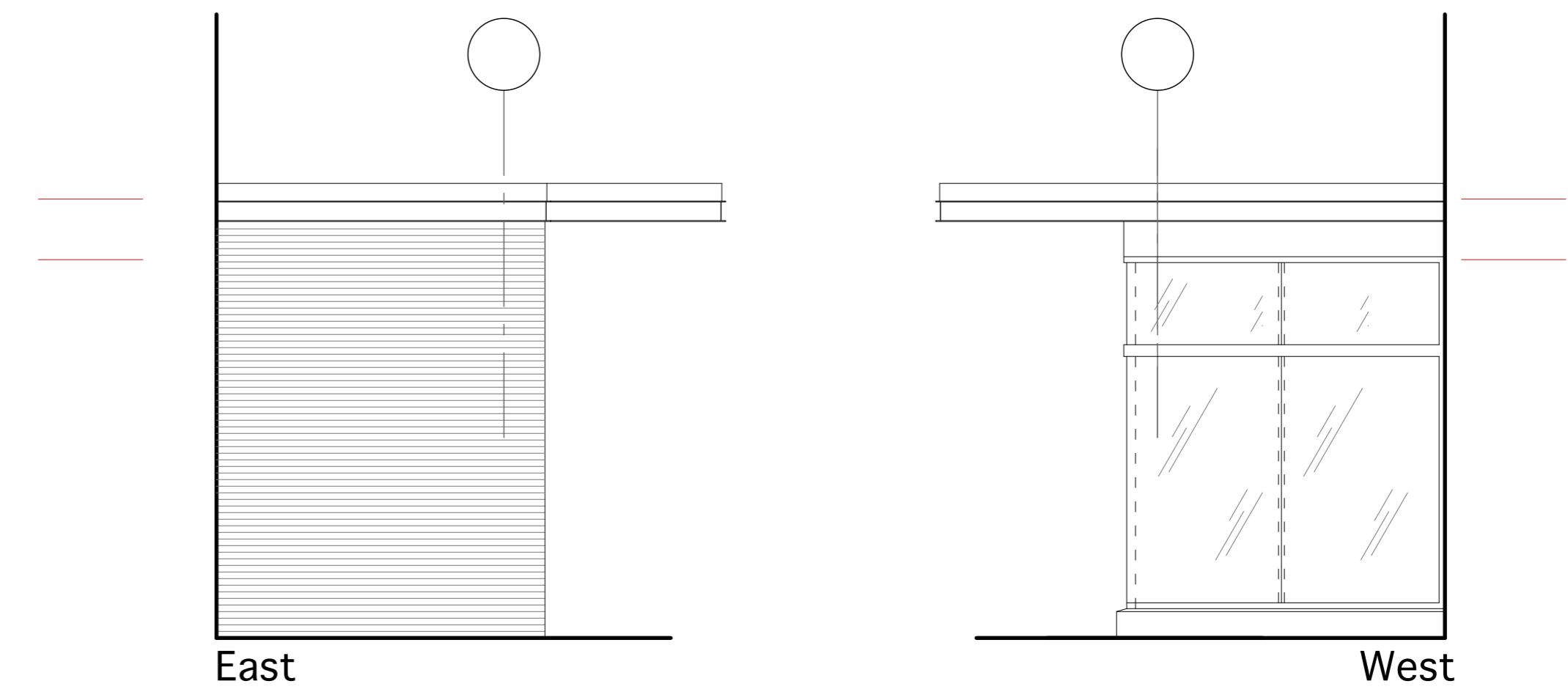
December 12, 2014

**VESTIBULE PLAN, SECTIONS AND ELEVATIONS**

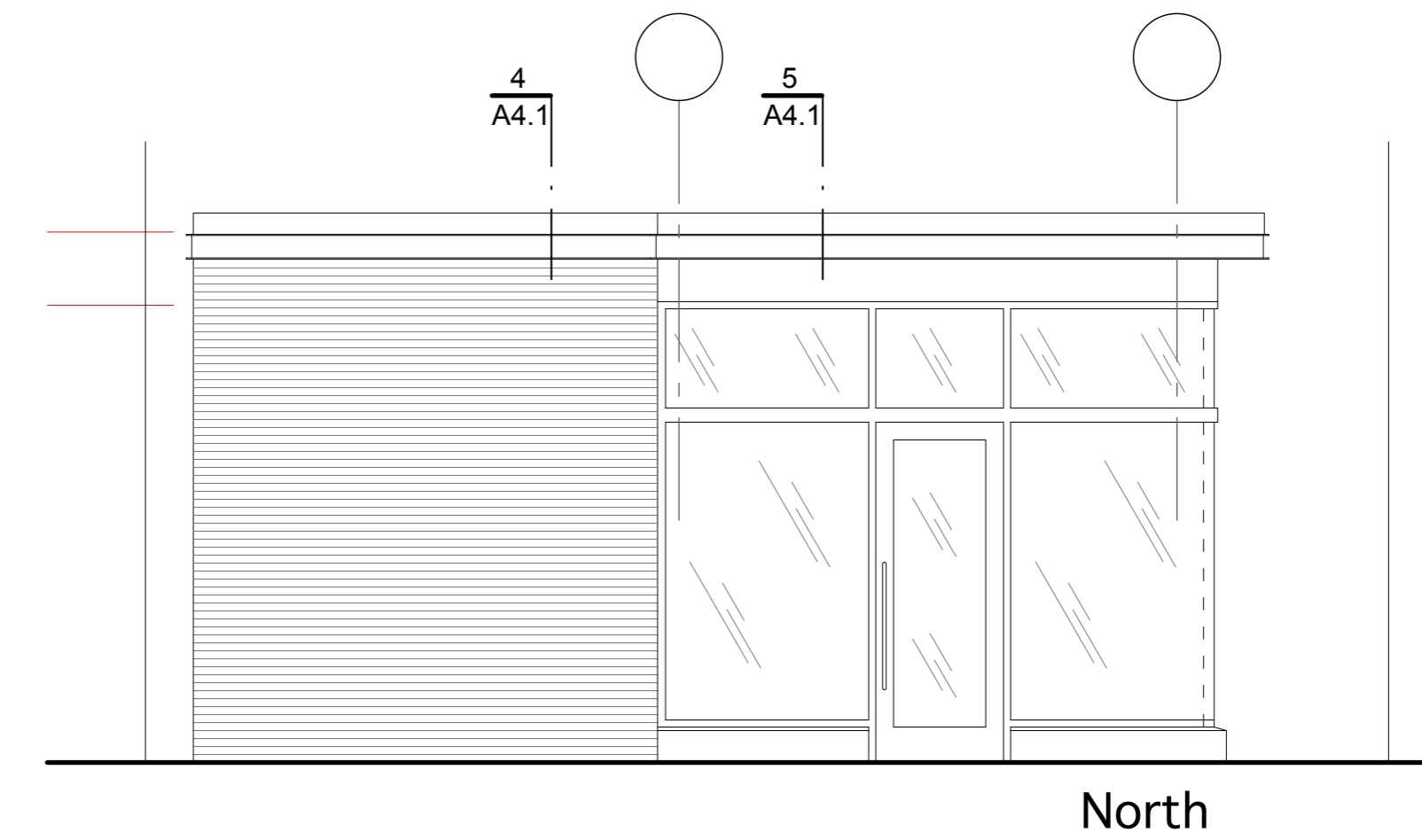
Scale: As Noted



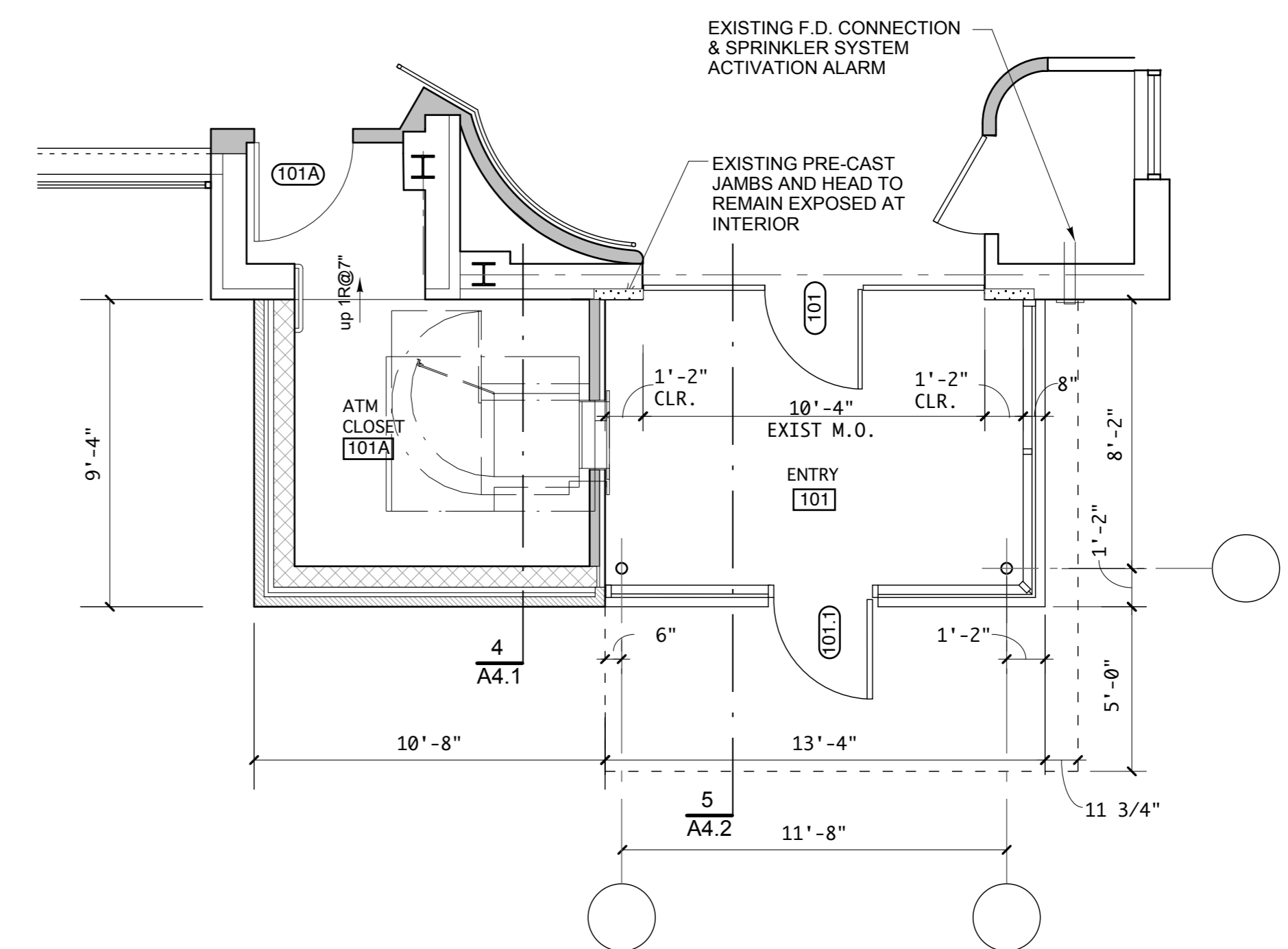
**4 WALL SECTION**  
scale: 1" = 1'-0"



**3 VESTIBULE ELEVATIONS**  
scale: 1/4" = 1'-0"



**2 VESTIBULE ELEVATION**  
scale: 1/4" = 1'-0"



**1 VESTIBULE ENLARGED PLAN**  
scale: 1/4" = 1'-0"

**4 WALL SECTION**  
scale: 1" = 1'-0"