

| REVISION | DESCRIPTION | DATE |
|----------|------------------------------|-----------|
| 0 | ISSUED FOR REVIEW & APPROVAL | 5/19/2014 |

RESERVED FOR CITY STAMP

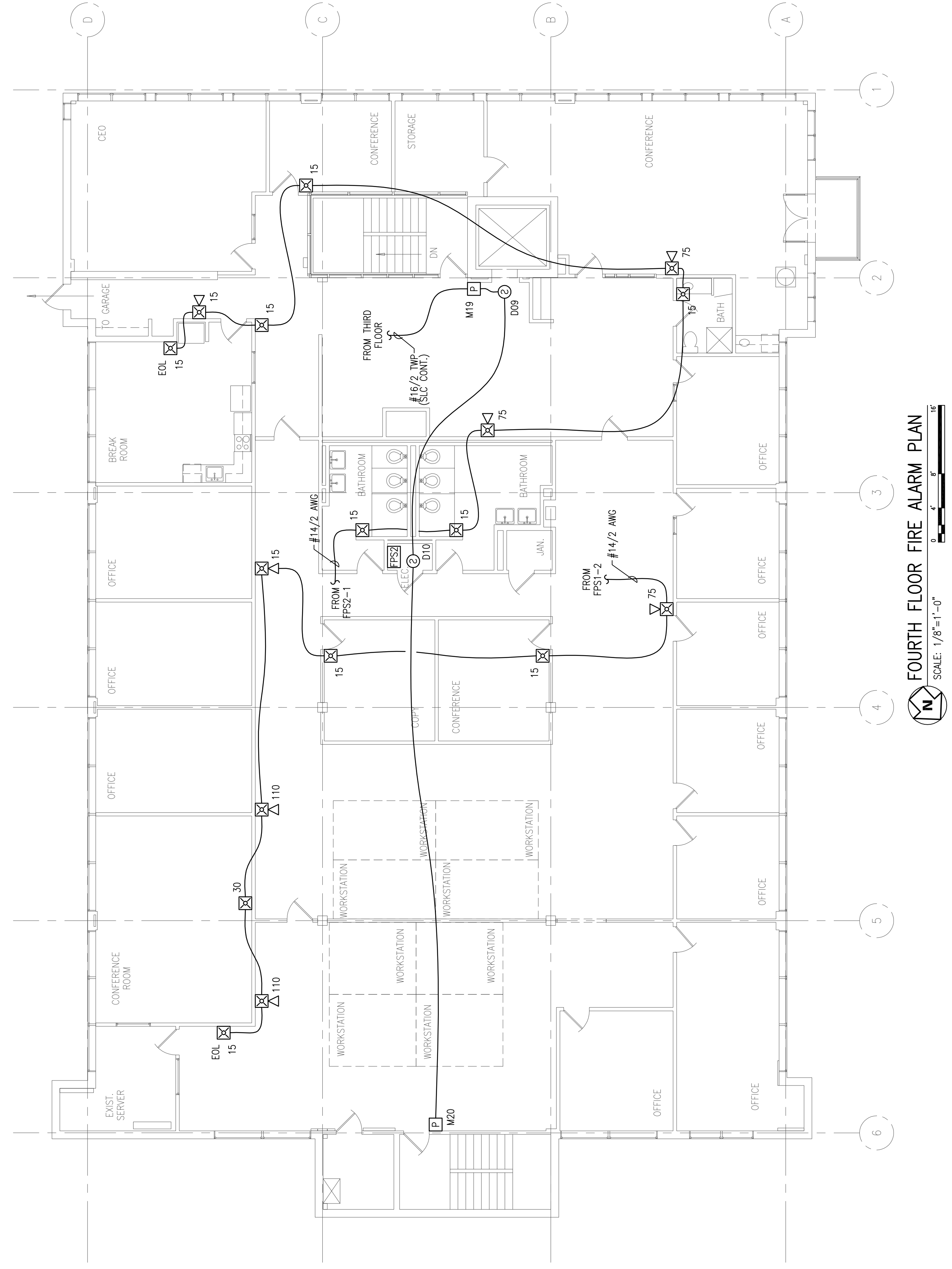
CUNNINGHAM
Security Systems
10 Princes Point Road, Yarmouth, Maine 04096
Office: 207.846.3350 • Fax: 207.846.6080

27 PEARL STREET
PORTLAND, MAINE 04101
FOURTH FLOOR FIRE ALARM PLAN

| | | |
|----------|---------------|-------------------|
| DRAWN | JPB | UNICAD JOB #14257 |
| CHECKED | WAYNE B. HANS | NCET # 90496 |
| DATE | 5/15/2014 | |
| REVISION | 0 | |
| SCALE | 1/8"=1'-0" | |

UNICAD Inc.
Fire Alarm Design & Drafting Services
www.unicad.net
578 W. 40th St.
Portland, ME 04102
Office: 801.865.0410

FA-6



FOURTH FLOOR FIRE ALARM PLAN
SCALE: 1/8"=1'-0"

MAC Circuit Voltage Drop Calculation 5/16/2014

| | |
|------------------------------------|-----------------|
| Project Name | 27 PEARL STREET |
| Circuit Number | FPS2-1 |
| Nominal System Voltage | 20.4 volts |
| Minimum Device Voltage | 16 volts |
| Distance from source to 1st device | 10 |
| Wire Gauge for balance of circuit | 14 |
| Max Output Current | 2.0 amps |
| Total Circuit Current | 0.827 amps |

| Device | Current | Distance previous device | Voltage at Device | Drop from source | Percent Drop |
|----------|---------|--------------------------|-------------------|------------------|--------------|
| Device 1 | 0.066 | 11 | 20.35 | 0.05 | 1% |
| Device 2 | 0.176 | 16 | 20.30 | 0.17 | 1% |
| Device 3 | 0.066 | 40 | 20.23 | 0.17 | 1% |
| Device 4 | 0.176 | 4 | 20.10 | 0.30 | 1% |
| Device 5 | 0.066 | 4 | 20.09 | 0.31 | 2% |
| Device 6 | 0.066 | 53 | 20.00 | 0.40 | 2% |
| Device 7 | 0.079 | 22 | 19.97 | 0.43 | 2% |
| Device 8 | 0.066 | 8 | 19.97 | 0.43 | 2% |
| Totals | 0.827 | 7 | 19.96 | 0.44 | 2% |

MAC Circuit Voltage Drop Calculation 5/16/2014

| | |
|------------------------------------|-----------------|
| Project Name | 27 PEARL STREET |
| Circuit Number | FPS2-2 |
| Nominal System Voltage | 20.4 volts |
| Minimum Device Voltage | 16 volts |
| Distance from source to 1st device | 45 |
| Wire Gauge for balance of circuit | 14 |
| Max Output Current | 2.0 amps |
| Total Circuit Current | 0.971 amps |

| Device | Current | Distance previous device | Voltage at Device | Drop from source | Percent Drop |
|----------|---------|--------------------------|-------------------|------------------|--------------|
| Device 1 | 0.066 | 13 | 20.13 | 0.27 | 2% |
| Device 2 | 0.066 | 21 | 20.03 | 0.57 | 2% |
| Device 3 | 0.066 | 27 | 19.91 | 0.49 | 2% |
| Device 4 | 0.079 | 20 | 19.83 | 0.57 | 3% |
| Device 5 | 0.212 | 20 | 19.72 | 0.68 | 3% |
| Device 6 | 0.094 | 12 | 19.70 | 0.70 | 3% |
| Device 7 | 0.212 | 13 | 19.67 | 0.73 | 4% |
| Device 8 | 0.066 | 7 | 19.67 | 0.73 | 4% |
| Totals | 0.971 | 174 | | | |