

WINTON SCOTT  
ARCHITECTS

5 Milk Street  
Portland, Maine 04101  
207 774 4811  
www.wintonscott.com



Branding / Bank Branch Interior  
Design:  
**THE ELEMENT GROUP**  
125 Brewery Lane  
Suite #9  
Portsmouth, NH 03801  
T. 603.319.8951

Structural Engineering:  
**STRUCTURAL INTEGRITY  
ENGINEERS**  
77 Oak Street  
Portland, ME 04101  
T. 207.774.4614

HVAC & plumbing  
Engineering:  
**MECHANICAL SYSTEMS  
ENGINEERS**

Royal River Center, Unit 10B  
10 Forest Falls Drive  
Yarmouth, ME 04096  
T. 207.846.1441

Electrical Engineering:  
**SWIFT CURRENT  
ENGINEERING**  
Royal River Center, Unit 4B  
10 Forest Falls Drive  
Yarmouth, ME 04096  
T. 207.847.9280

**Northeast  
BANK**

**Portland Branch**

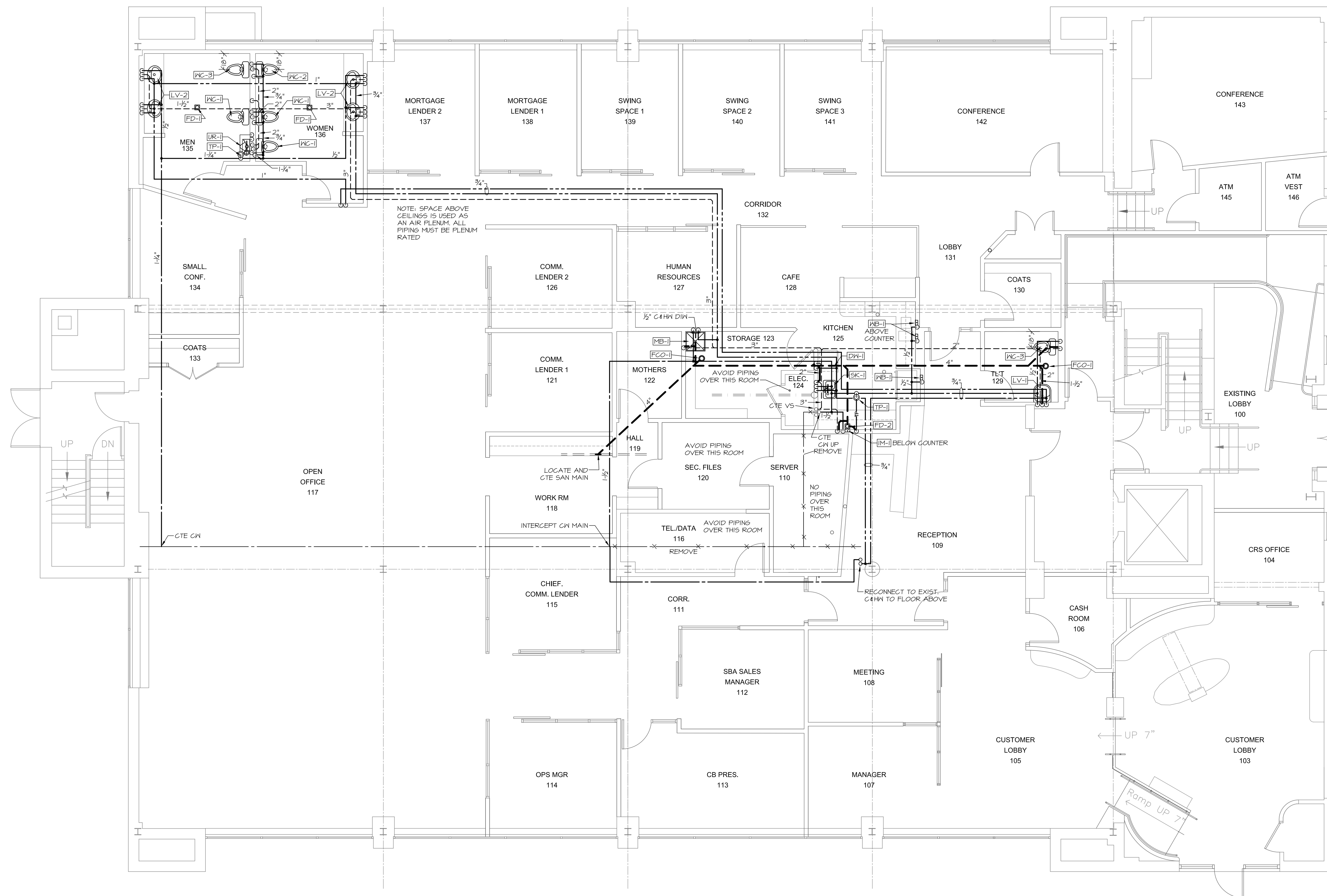
27 Pearl Street  
1st Floor Tenant Space  
Portland, Maine

FOR CONSTRUCTION  
March 04, 2015

**FIRST FLOOR  
PLUMBING  
PLAN**

Scale: 3/16" = 1'-0"

**PI**



NOTE: SPACE ABOVE  
CEILING IS USED AS  
AN AIR PLENUM. ALL  
PIPING MUST BE PLENUM  
RATED

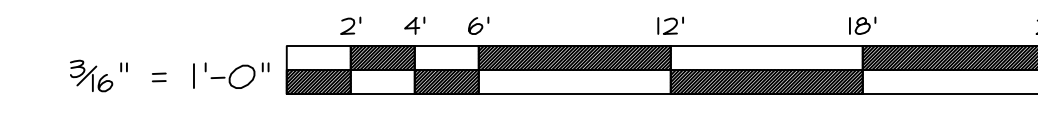
AVOID PIPING  
OVER THIS ROOM

NO PIPING  
OVER  
THIS  
ROOM

AVOID PIPING  
OVER THIS ROOM

RECONNECT TO EXIST.  
C&HN TO FLOOR ABOVE

March 05, 2015 - 11:40 am  
\\MEPFS1\shared\Projects\1437 Northeast Bank\Drawings\1437-P1-P3.dwg



**MECHANICAL SYSTEMS ENGINEERS**  
ROYAL RIVER CENTER, UNIT #10B  
10 FOREST FALLS DRIVE  
YARMOUTH, MAINE 04096  
FACEBOOK: MECHANICAL SYSTEMS ENGINEERS  
207-846-1441  
M.S.E. Proj. 1437  
© COPYRIGHT 2015

