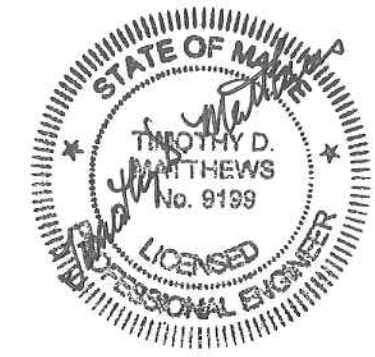


KEYED NOTES:

- ① RELOCATE EXISTING HEAT PUMP. SEE DRAWING E1.0 FOR NEW LOCATION. REUSE EXISTING WIRING WHERE CONDITIONS WARRANT.
- ② DEMO EXISTING UNIT. REMOVE WIRING BACK TO PANEL FEEDING IT.
- ③ ABANDON UNIT IN PLACE (NO SCOPE ON SECOND FLOOR). REMOVE ALL WIRING ABOVE THIS CEILING SPACE.

NOTES:

- 1. SEE E0.0 FOR LEGEND, ABBREVIATIONS AND GENERAL NOTES.
- 2. FIELD VERIFY ALL CIRCUIT WIRING PRIOR TO REMOVAL.



Branding / Bank Branch
Interior Design:
THE ELEMENT GROUP
125 Brewery Lane
Suite #9
Portsmouth, NH 03801
T. 603.319.8951

Structural Engineering:
STRUCTURAL INTEGRITY
ENGINEERS
77 Oak Street
Portland, ME 04101
T. 207.774.4614

HVAC & plumbing
Engineering:
MECHANICAL SYSTEMS
ENGINEERS

Royal River Center, Unit 10
10 Forest Falls Drive
Yarmouth, ME 04096
T. 207.846.1441

Electrical Engineering:
SWIFTCURRENT ENGINEERING
Royal River Center, Unit 4B
10 Forest Falls Drive
Yarmouth, ME 04096
T. 207.847.9280



Portland
Branch
27 Pearl Street
1st Floor Tenant
Space
Portland, Maine

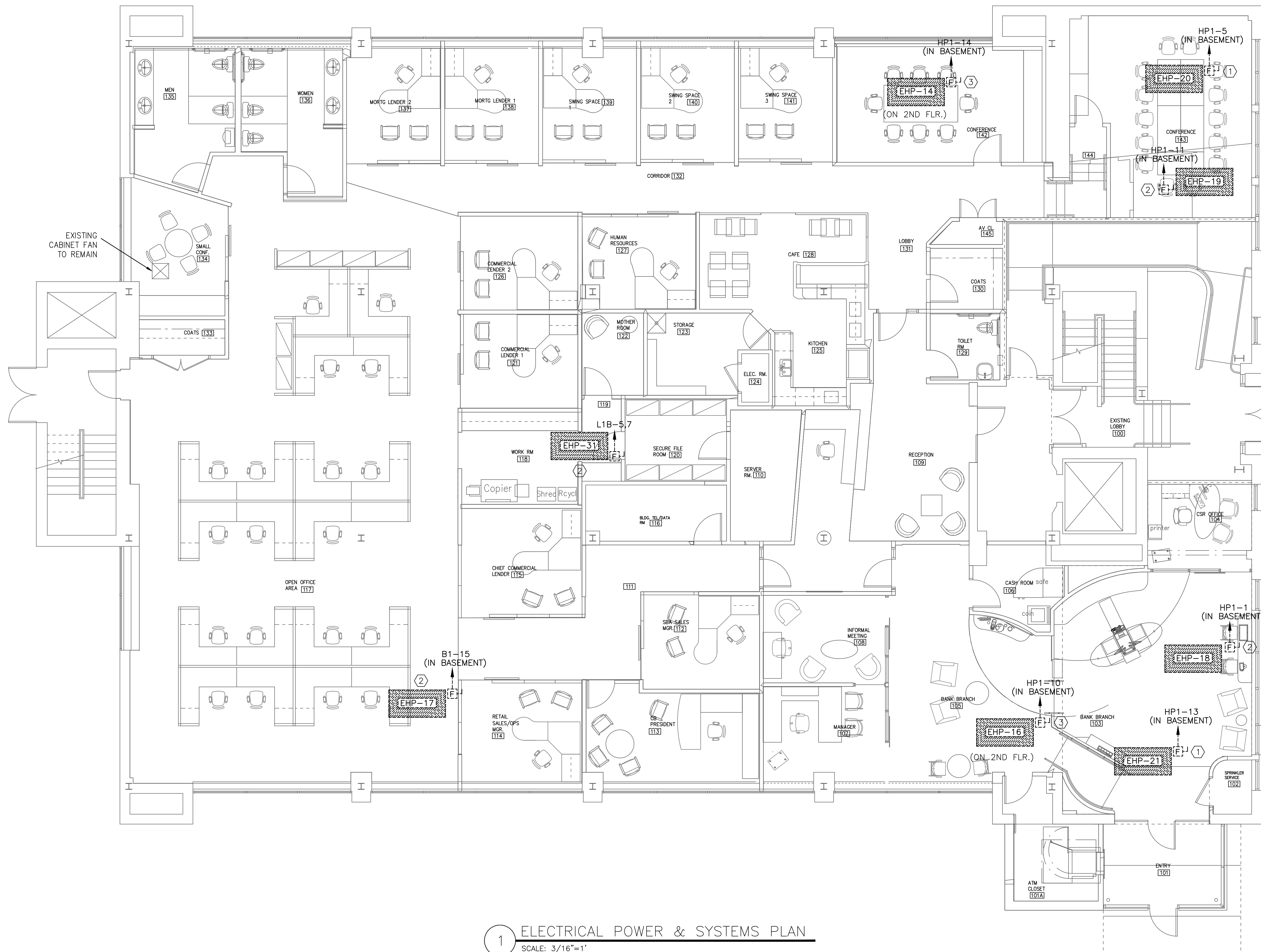
ISSUED FOR REVIEW
NOT FOR CONSTRUCTION
January 30th, 2015

ELECTRICAL POWER & SYSTEMS
DEMO PLAN

Scale: As Noted

**FINAL BID SET
FEBRUARY 4, 2015**

ED1.0



1 ELECTRICAL POWER & SYSTEMS PLAN
SCALE: 3/16"=1'