

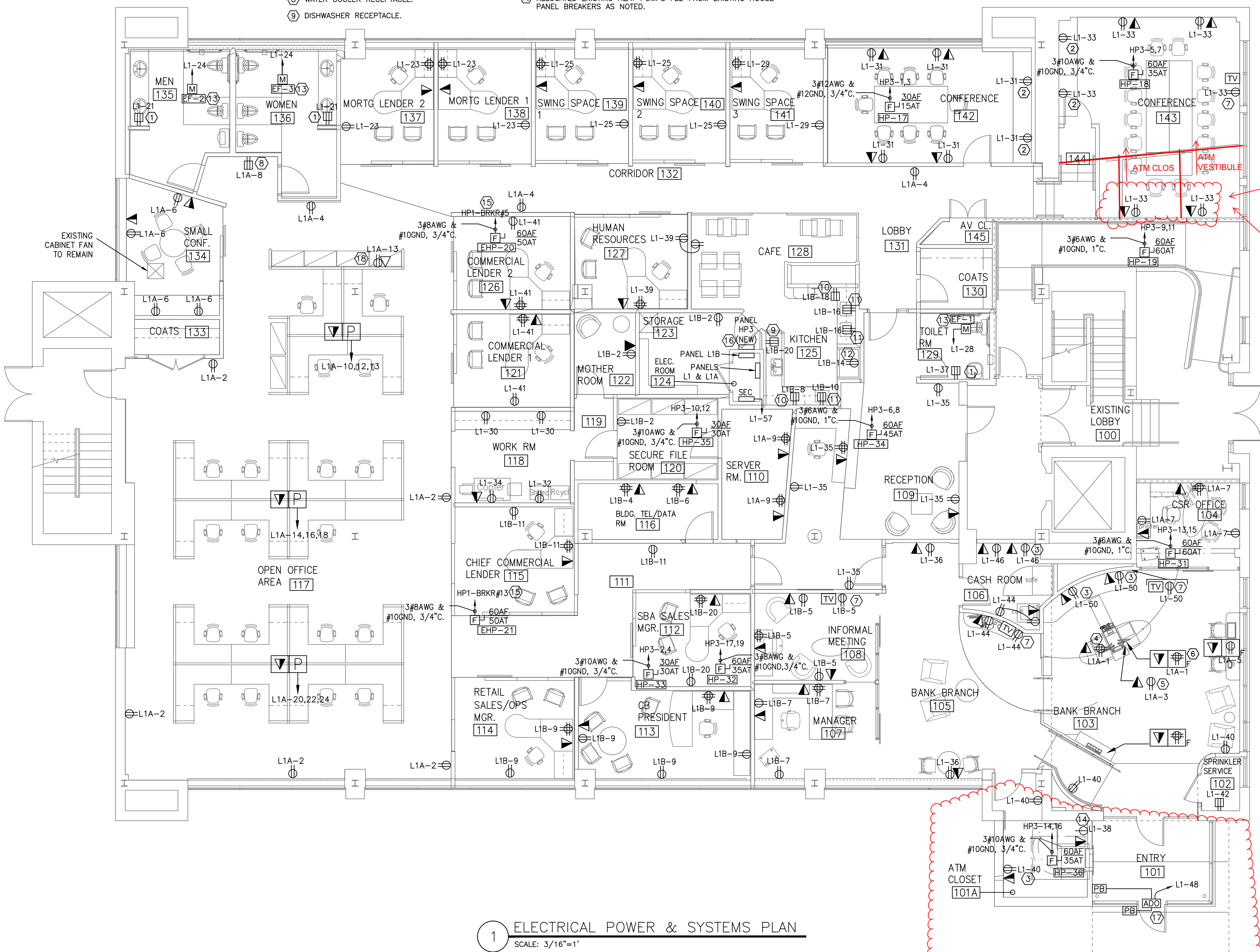
**KEYED NOTES:**

- ① MOUNT 42" AFF.
- ② COORDINATE RECEPTACLE HEIGHT WITH CASEWORK.
- ③ MOUNT 44" AFF.
- ④ FEED FROM FLOOR MOUNT THROUGH CABINET.
- ⑤ DEDICATED POWER AND DATA FOR CASH RECYCLER.
- ⑥ STUB UP TO COUNTER.
- ⑦ MOUNT HDMI TV JACK AND RECEPTACLE 60" AFF.
- ⑧ WATER COOLER RECEPTACLE.
- ⑨ DISHWASHER RECEPTACLE.
- ⑩ COUNTERTOP RECEPTACLE MOUNT 6" ABOVE COUNTERTOP. COORDINATE WITH BACKSPLASH.
- ⑪ MICROWAVE RECEPTACLE.
- ⑫ REFRIGERATOR RECEPTACLE.
- ⑬ LIGHT SWITCH/OCCUPANCY SENSOR ACTIVATES LIGHTS AND TOILET EXHAUST FAN. ELECTRICAL CONTRACTOR TO FURNISH A 2-POLE RELAY TO TURN ON LIGHTS AND EXHAUST FAN WHENEVER ACTIVATED.
- ⑭ DEDICATED NEMA 5-15P RECEPTACLE FOR ATM MACHINE.
- ⑮ RELOCATED EXISTING HEAT PUMPS FED FROM EXISTING HOUSE PANEL BREAKERS AS NOTED.

- ⑯ INSTALL NEW PANEL HP3. FURNISH TROUGH ABOVE PANEL TO CONCEAL MC CABLING EXITING PANEL INTO CEILING SPACE.
- ⑰ AUTOMATIC DOOR OPENER. COORDINATE LOCATION OF PUSH BUTTON OPERATOR WITH ARCHITECT.
- ⑱ COPIER. DEDICATED CIRCUIT FED VIA POWERPOLE TO MODULAR FURNITURE.

**NOTES:**

1. SEE E0.0 FOR LEGEND, ABBREVIATIONS AND GENERAL NOTES.

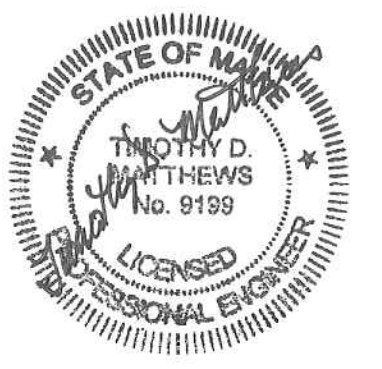


MOVE OUTLETS TO REVISED CONFERENCE ROOM LAYOUT

NEW ENTRY AND ATM CLOS. ADDITION TO BE DELETED. RELOCATE ALL ELECTRICAL COMPONENTS SHOWN TO NEW ATM VESTIBULE LOCATION

FINAL BID SET FEBRUARY 4, 2015

**1 ELECTRICAL POWER & SYSTEMS PLAN**  
SCALE: 3/16"=1'



Branding / Bank Branch Interior Design: THE ELEMENT GROUP

125 Brewery Lane Suite #9 Portsmouth, NH 03801 T. 603.319.8951

Structural Engineering: STRUCTURAL INTEGRITY ENGINEERS

77 Oak Street Portland, ME 04101 T. 207.774.4614

HVAC & plumbing Engineering: MECHANICAL SYSTEMS ENGINEERS

Royal River Center, Unit 10 10 Forest Falls Drive Yarmouth, ME 04096 T. 207.846.1441

Electrical Engineering: SWFTCURRENT ENGINEERING

Royal River Center, Unit 4B 10 Forest Falls Drive Yarmouth, ME 04096 T. 207.847.9280



Portland Branch  
27 Pearl Street  
1st Floor Tenant Space  
Portland, Maine

ISSUED FOR REVIEW NOT FOR CONSTRUCTION  
January 30th, 2015

ELECTRICAL POWER & SYSTEMS PLAN

Scale: As Noted

E1.0