



Branding / Bank Branch Interior  
Design:  
**THE ELEMENT GROUP**  
125 Brewery Lane  
Suite #9  
Portsmouth, NH 03801  
T. 603.319.8951

Structural Engineering:  
**STRUCTURAL INTEGRITY ENGINEERS**  
77 Oak Street  
Portland, ME 04101  
T. 207.774.4614

HVAC & plumbing Engineering:  
**MECHANICAL SYSTEMS ENGINEERS**  
Royal River Center, Unit 10  
10 Forest Falls Drive  
Yarmouth, ME 04096  
T. 207.846.1441

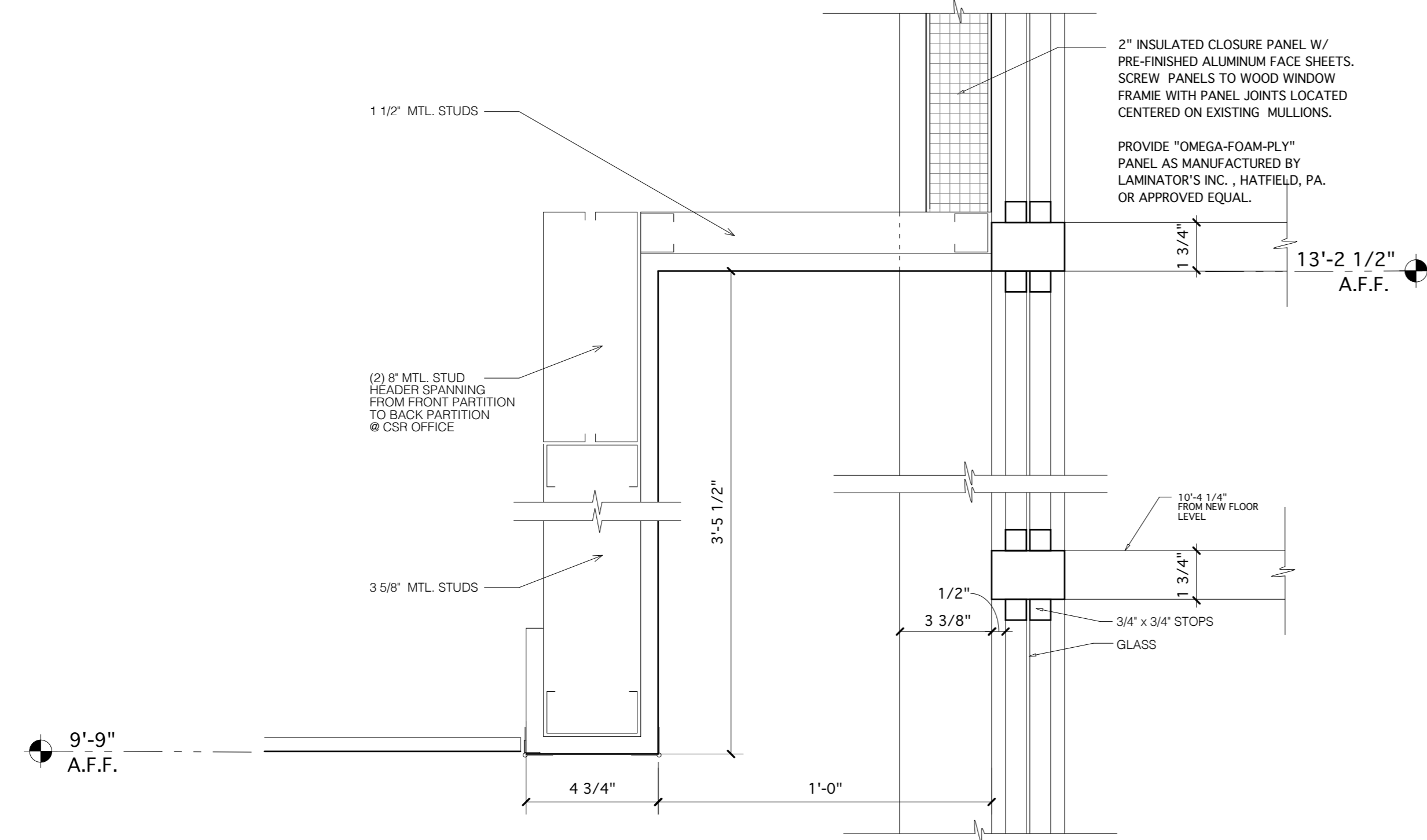
Electrical Engineering:  
**SWIFT CURRENT ENGINEERING**  
Royal River Center, Unit 4B  
10 Forest Falls Drive  
Yarmouth, ME 04096  
T. 207.847.9280

**Portland Branch**  
27 Pearl Street  
1st Floor Tenant Space  
Portland, Maine

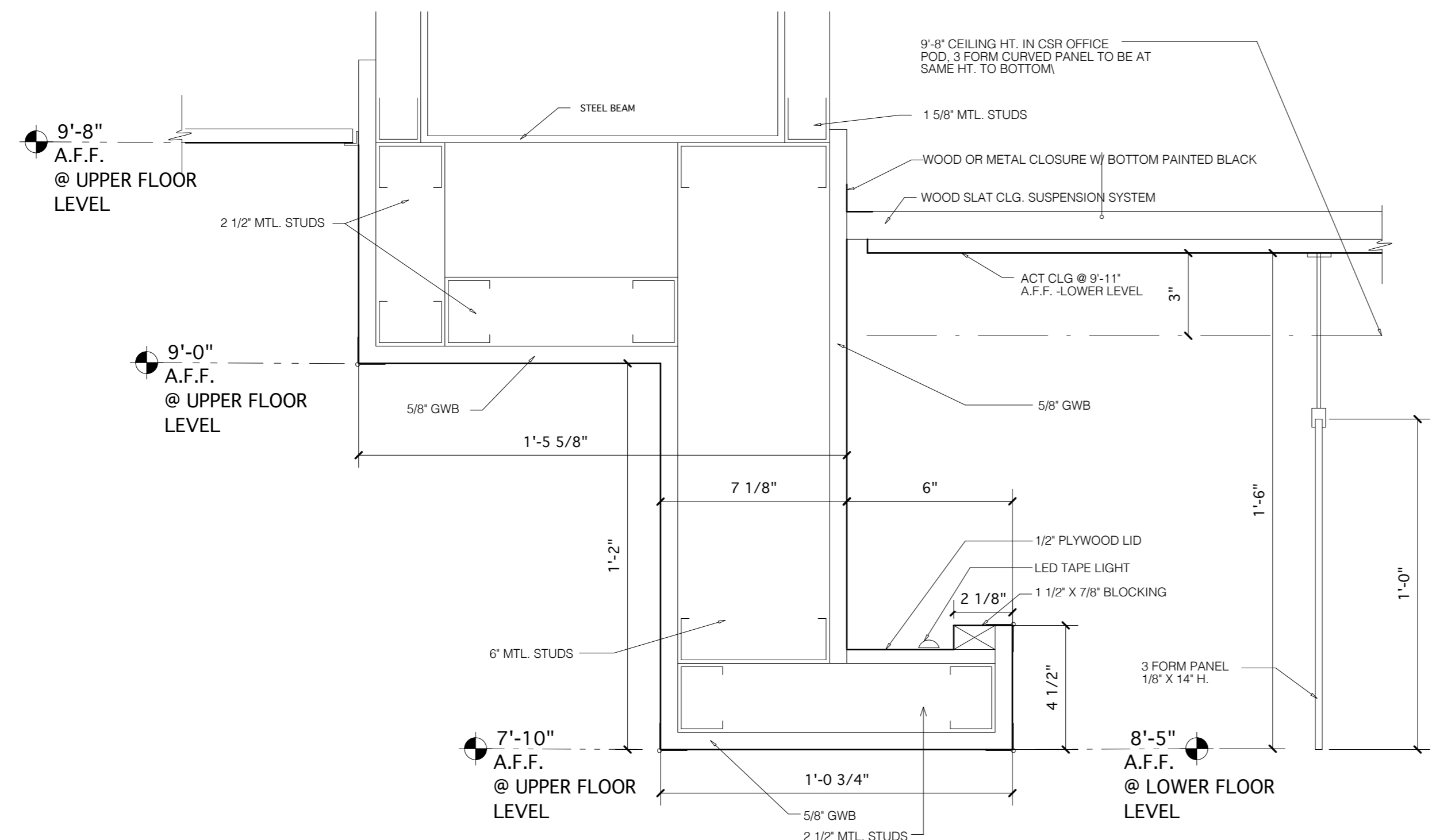
**FINAL CONSTRUCTION SET**  
MARCH 4, 2015

**CEILING SOFFIT DETAILS**

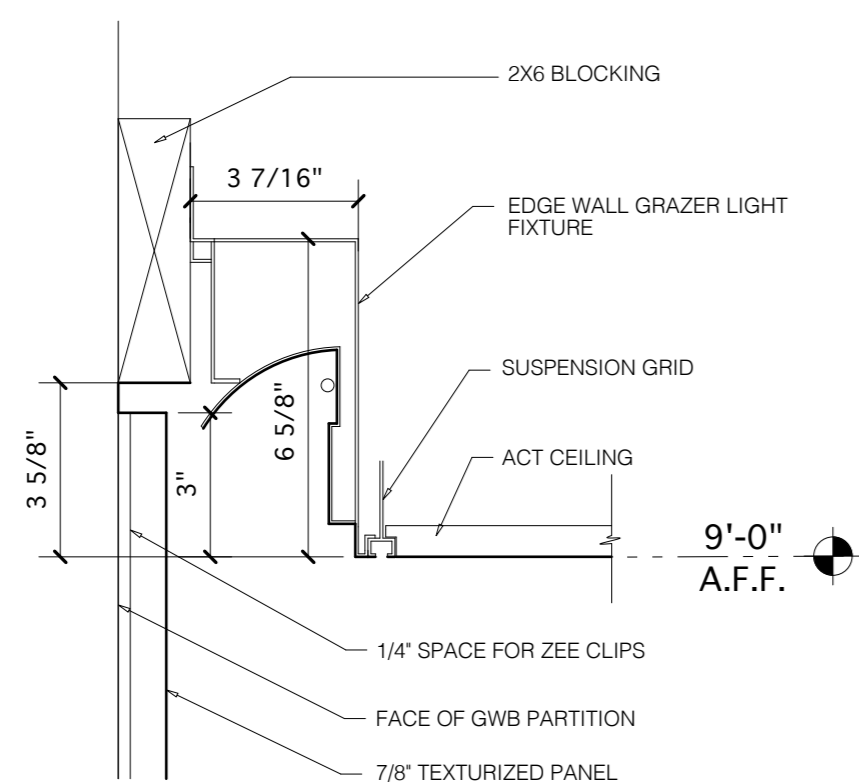
Scale: As Noted



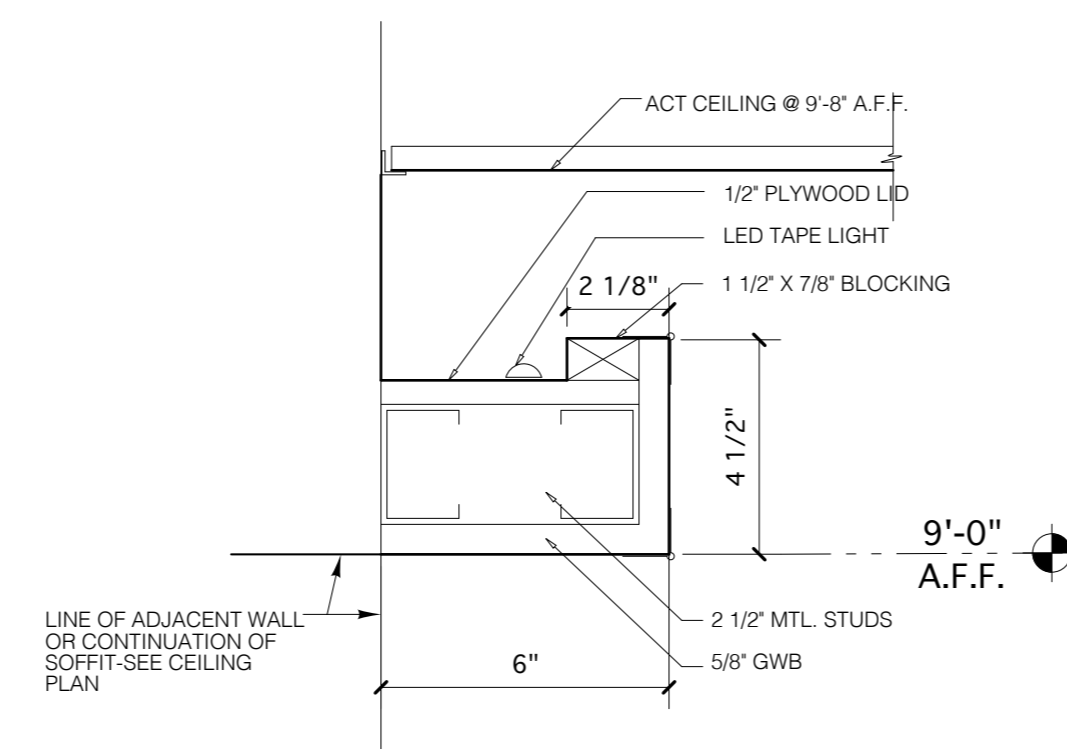
**10 SECTION @ CSR OFFICE CEILING @ EXIST'G WOOD WINDOW**  
scale: 3" = 1'-0"



**9 SHELF SOFFIT DETAIL**  
scale: 3" = 1'-0"

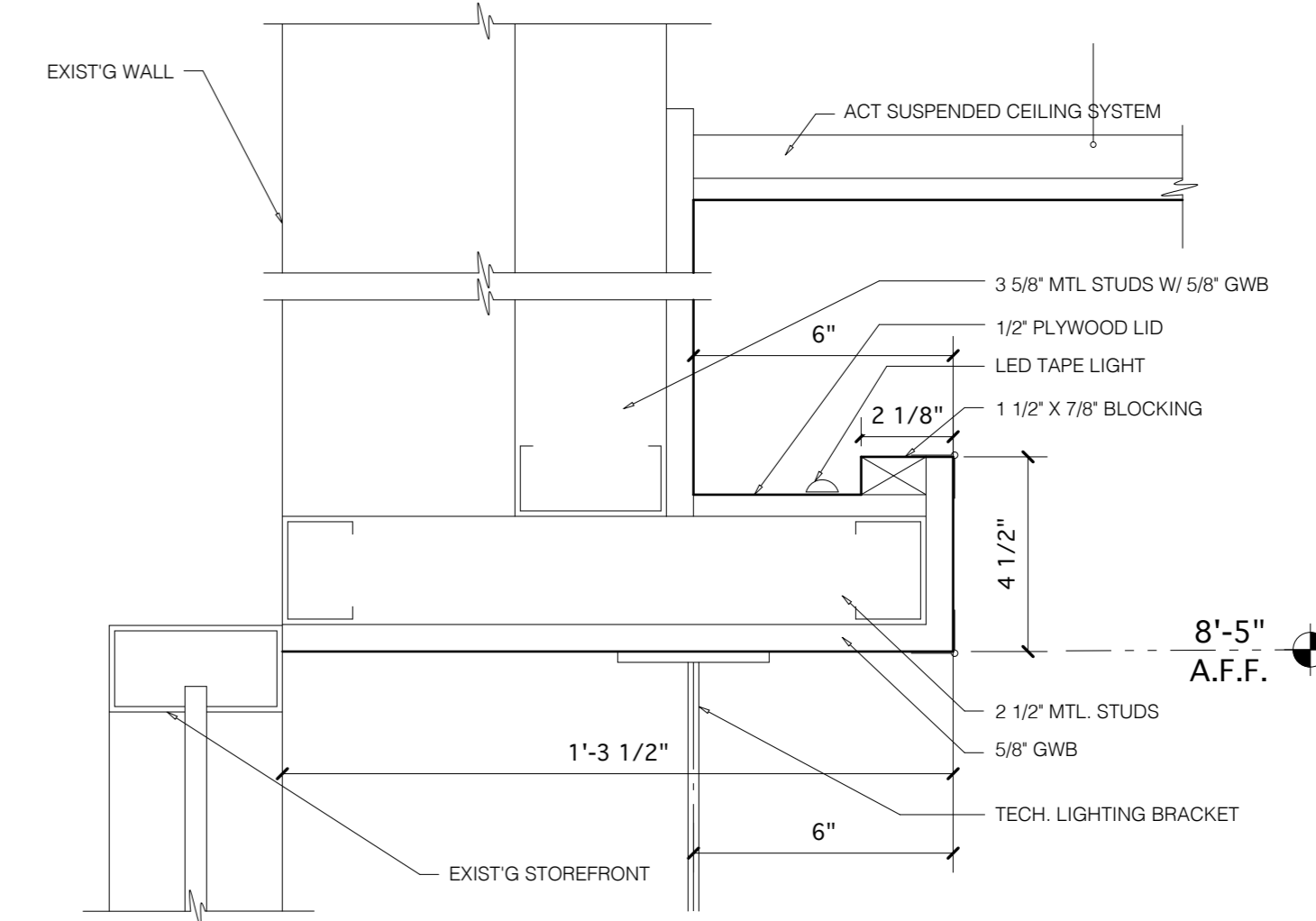


**8 DETAIL @ WALL GRAZER**  
scale: 3" = 1'-0"



**7 SHELF SOFFIT DETAIL**  
scale: 3" = 1'-0"

**5 SOFFIT DETAIL**  
scale: 1 1/2" = 1'-0"



**6 SHELF SOFFIT DETAIL @ STOREFRONT STREET SIDE**  
scale: 3" = 1'-0"