

**HARDWARE SPECIFICATIONS**

**HINGES:**

**Manufacturers/Products:**

Provide 4 1/2" square cornered hinges by Stanley, Hager or McKinney. (3) Hinges per door at 7'-0" doors, (4) hinges at 8'-0" doors

**EXIT DEVICES:**

**Manufacturers/Products:**

- 1.) 'Olympian Series' by Precision Hardware
- 2.) '80 Series' by Sargent
- 3.) '98 Series' by Von Duprin
- 4.) Or Approved Equal

**Notes:**

Door pair 100.1.: Provide vertical rod exit device -labeled in accordance with NFPA 80.

**CLOSERS:**

**Interior Surface Closers:**

- 1.) '4040 Series' by LCN
- 2.) '281 Series' by Sargent
- 3.) Or Approved Equal

**AUTOMATIC DOOR OPERATORS**

**Manufacturers/Products:**

**Surface Mounted at ATM Vestibule:**

- 1.) Horton Automatics - 4100 LE Series - Surface
- 2.) Or Approved Equal

**Concealed at Branch Entrance:**

- 1.) Horton Automatics - 4800 Series - Side Access in 6"x6" Housing.
- 2.) Or Approved Equal

**BORED LOCKS AND LATCHES:**

**Manufacturers/Products:**

- 1.) Best Lock Corporation - 9K Series - 15 C Trim
- 2.) Corbin Russwin - CL3300 Series - Newport Trim
- 3.) Sargent - 10 L Line - L L Trim
- 4.) Schlage - D Series - 06 Trim
- 5.) Or Approved Equal

**PUSH / PULLS:**

Provide 6" x 16" Push Plates & 1" Dia. brushed chrome ADA compliant pulls - 10" center to center with 3 1/2" projection and 2 1/2" clearance at Men's Rm and Women's Rm Doors 135 & 136.

Provide 1" Dia. x 36" long stainless steel straight, square ended pull with offset mounting similar to RM3310 - MegaTek by Rockwood Manufacturing Co. at exterior side of Exterior Entrance Door 101

**FINISH**

Hardware finish to be brushed chrome at interior locations and stainless steel at exterior locations.

**SECURITY/DOOR CONTROL**

The Security System and card readers will be installed by tenant's security vendor. Coordinate electronic hardware components to assure a complete and operational system.

**DOORS**

Clear Finished wood doors to be plain sliced Cherry  
Painted wood doors to be birch -paint grade

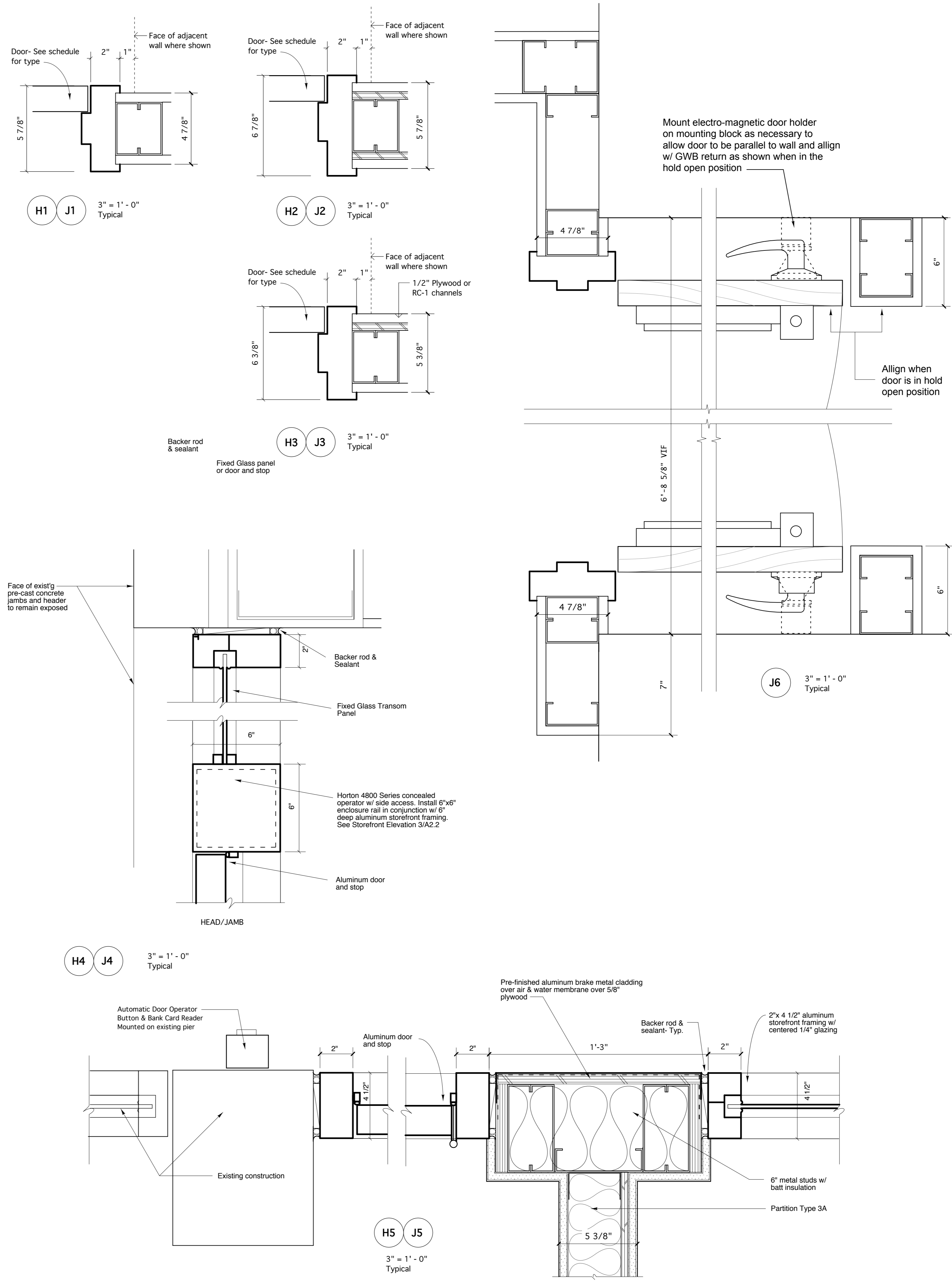
**LOCK CYLINDERS / KEYING:**

**Manufacturers/Products:**

Provide manufacturer's standard 6 pin tumbler type cylinders of same manufacturer as latches and locks.

Factory registered master key system . Provide 3 change keys, 5 master keys, and Key Control Cabinet.

Conduct keying conference with tenant and owner to determine keying requirements prior to installation.



**WSA**  
WINTON SCOTT ARCHITECTS  
5 Milk Street  
Portland, Maine 04101  
207 774 4811  
www.wintonscott.com

LICENSED ARCHITECT  
STEPHEN W. WEATHERHEAD  
No. 1948  
STATE OF MAINE

Branding / Bank Branch Interior Design:  
**THE ELEMENT GROUP**  
125 Brewery Lane  
Suite #9  
Portsmouth, NH 03801  
T. 603.319.8951

Structural Engineering:  
**STRUCTURAL INTEGRITY ENGINEERS**  
77 Oak Street  
Portland, ME 04101  
T. 207.774.4614

HVAC & plumbing Engineering:  
**MECHANICAL SYSTEMS ENGINEERS**  
Royal River Center, Unit 10  
10 Forest Falls Drive  
Yarmouth, ME 04096  
T. 207.846.1441

Electrical Engineering:  
**SWIFT CURRENT ENGINEERING**  
Royal River Center, Unit 4B  
10 Forest Falls Drive  
Yarmouth, ME 04096  
T. 207.847.9280

**Northeast BANK**

**Portland Branch**  
27 Pearl Street  
1st Floor Tenant Space  
Portland, Maine

FINAL CONSTRUCTION SET  
MARCH 4, 2015

DOOR DETAILS & HARDWARE SPECS  
Scale: As Noted

**A2.3**