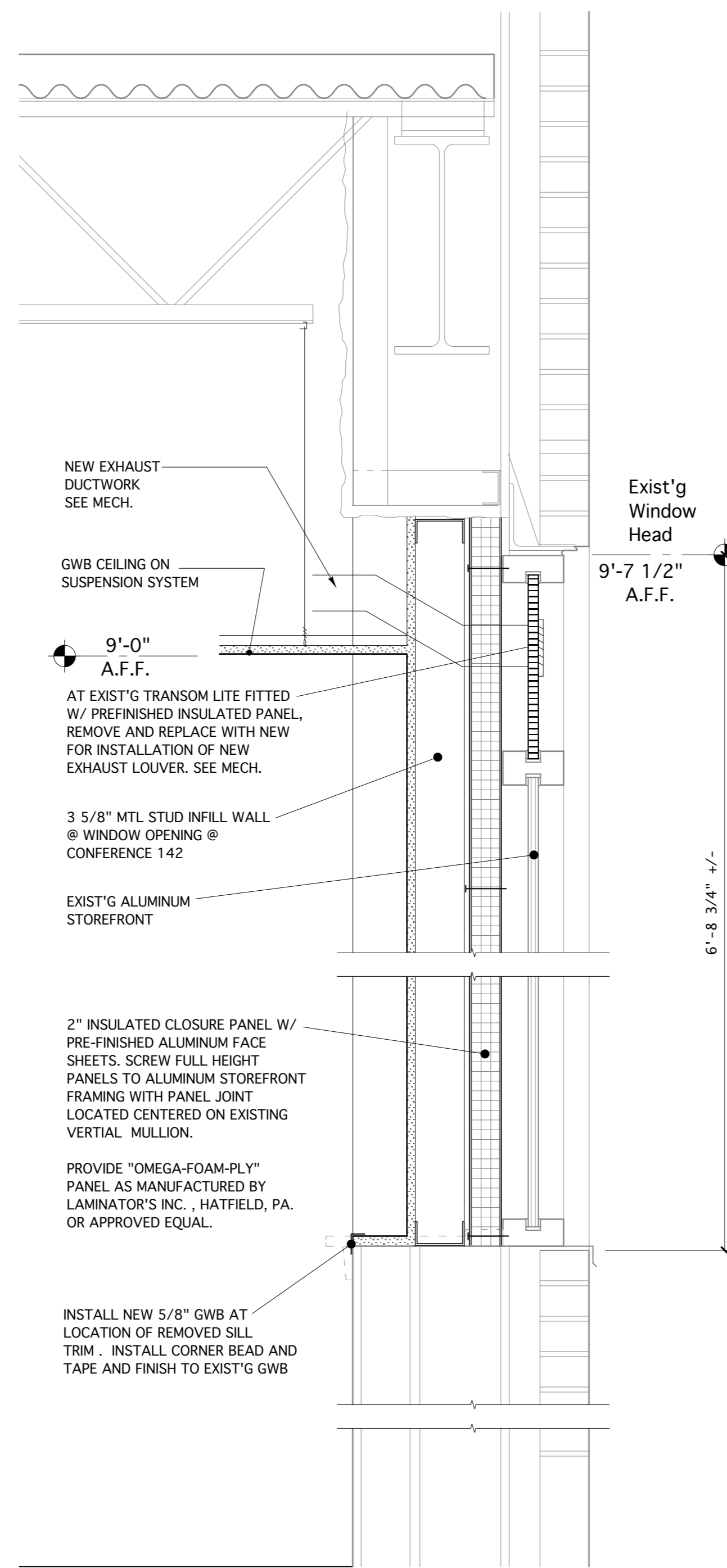
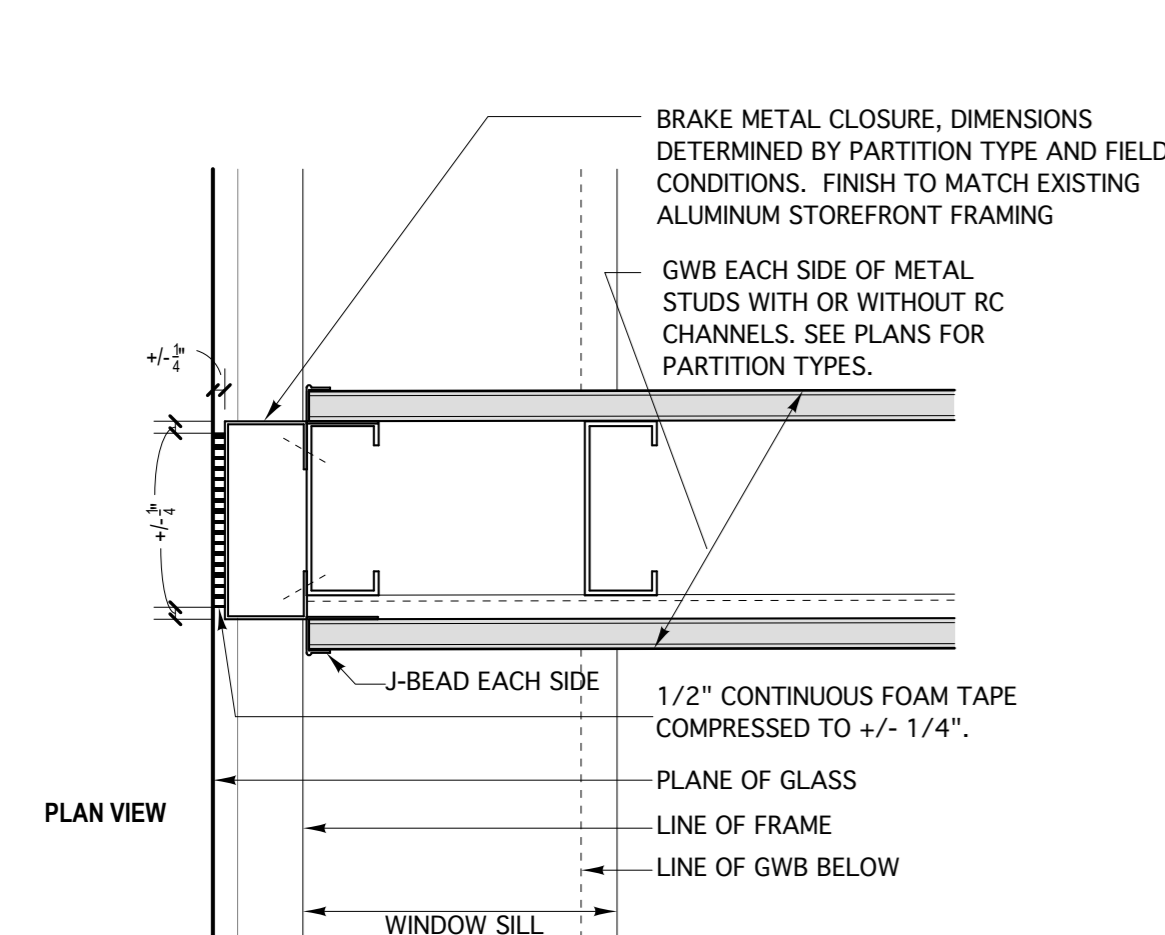


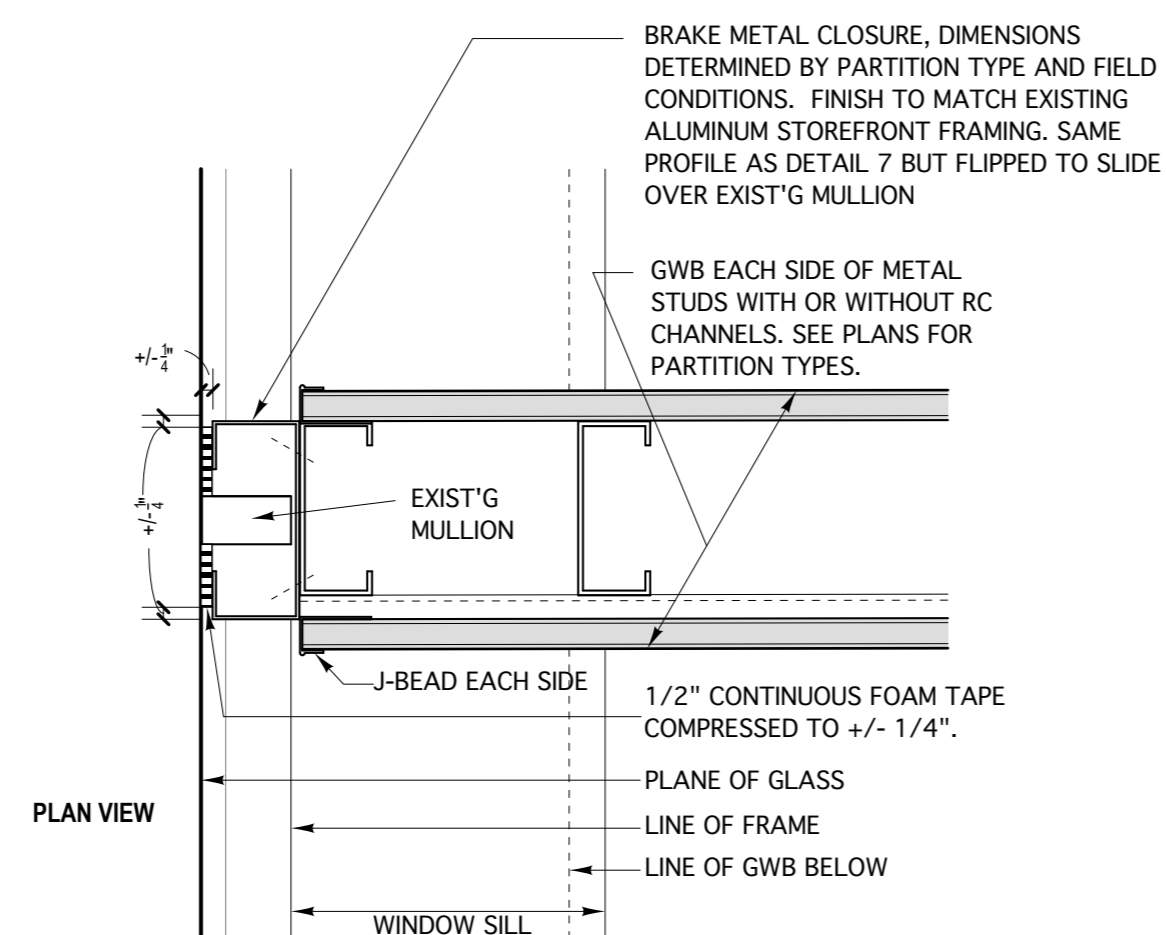
5 WINDOW INFILL DETAIL AT MEN'S /WOMEN'S ROOMS
scale: 1 1/2" = 1'-0"



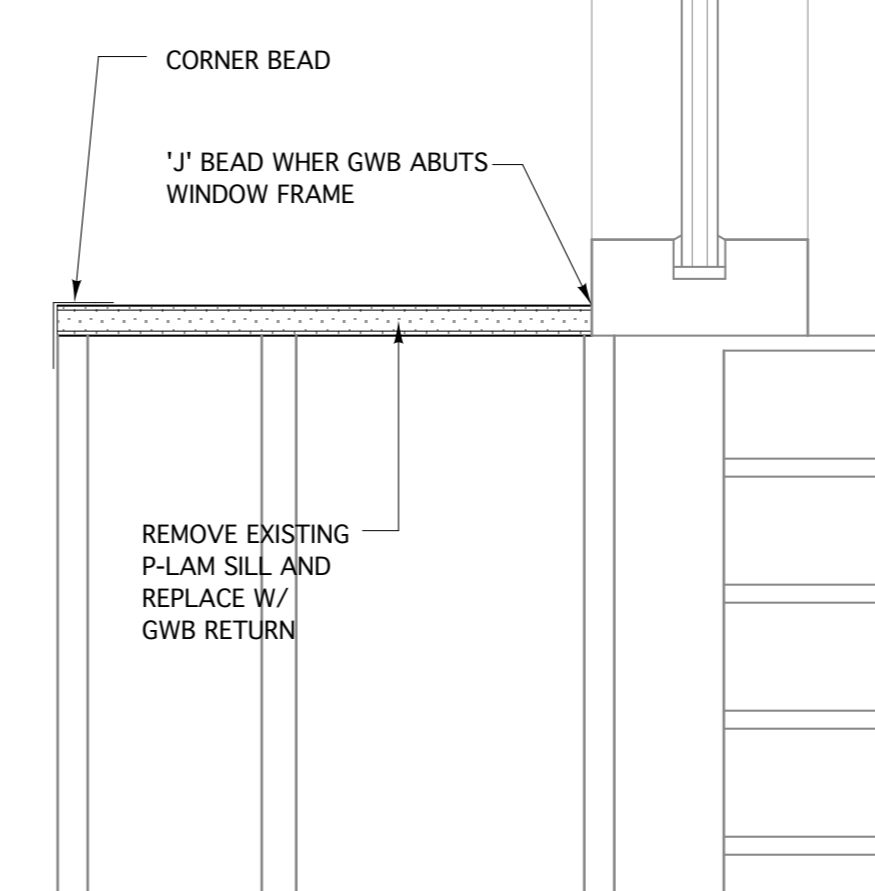
6 WINDOW INFILL DETAIL AT CONFERENCE RM. 142
scale: 1 1/2" = 1'-0"



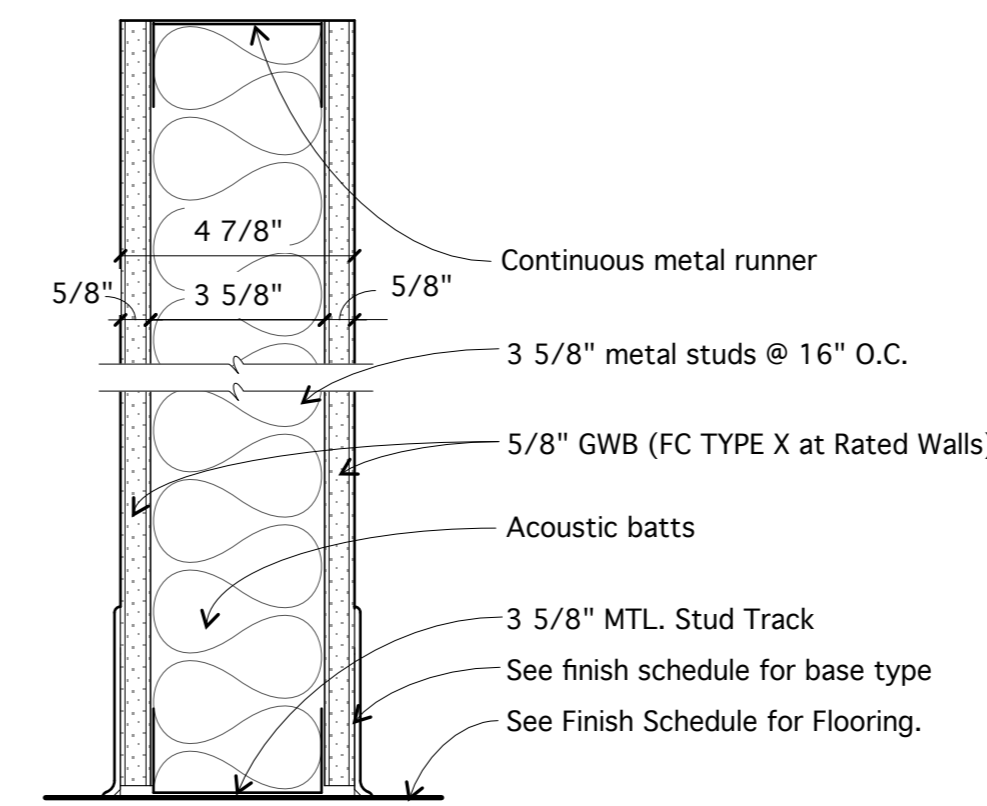
7 PARTITION DETAIL AT EXIST'G WINDOW
scale: 3" = 1'-0"



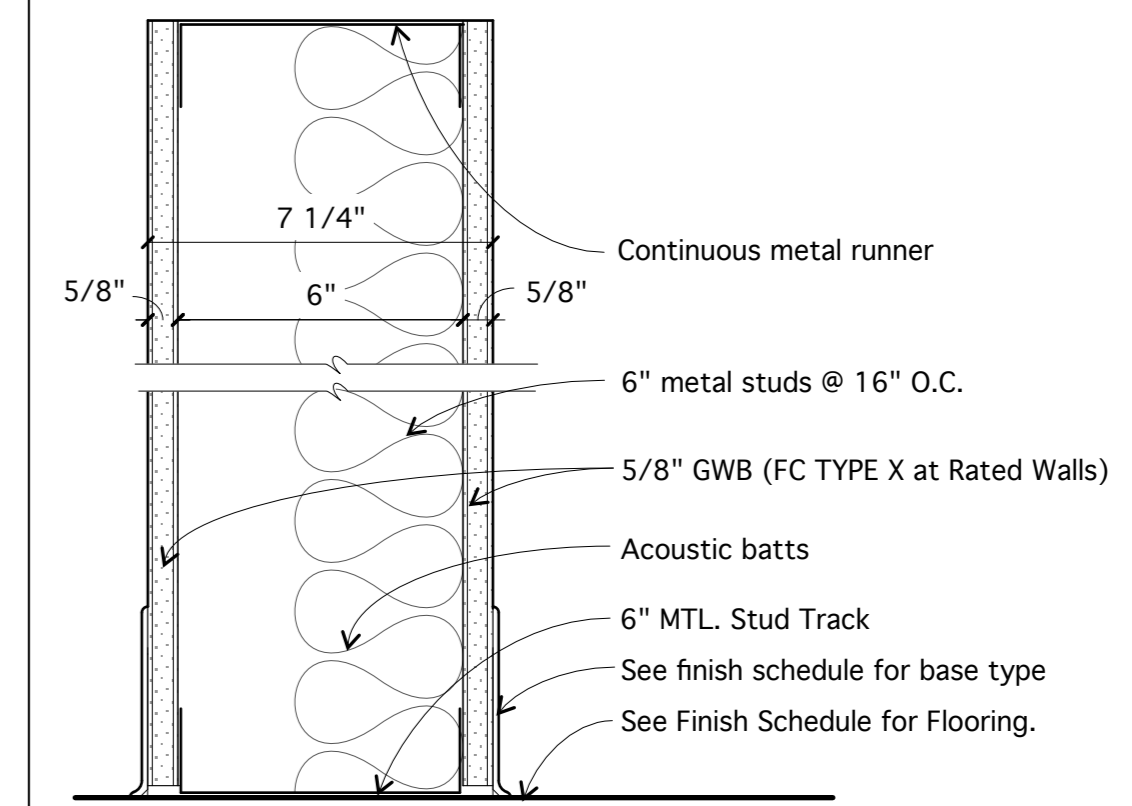
8 PARTITION DETAIL AT EXIST'G WINDOW
scale: 3" = 1'-0"



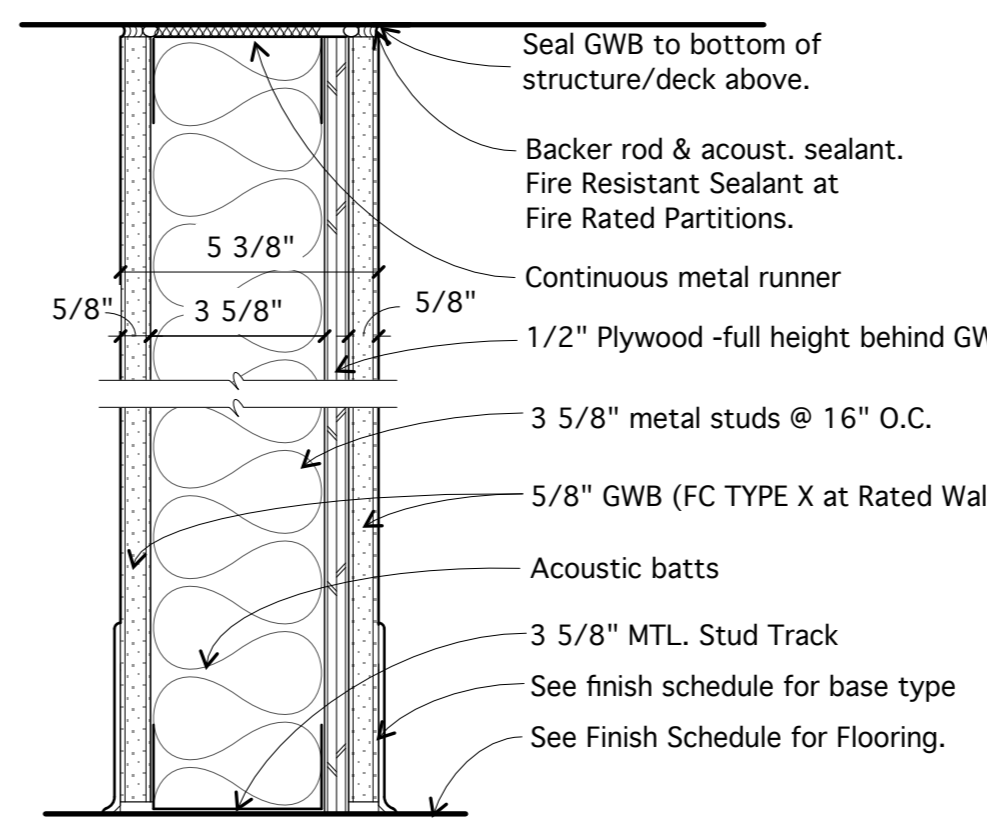
9 TYPICAL WINDOW SILL DETAIL
scale: 3" = 1'-0"



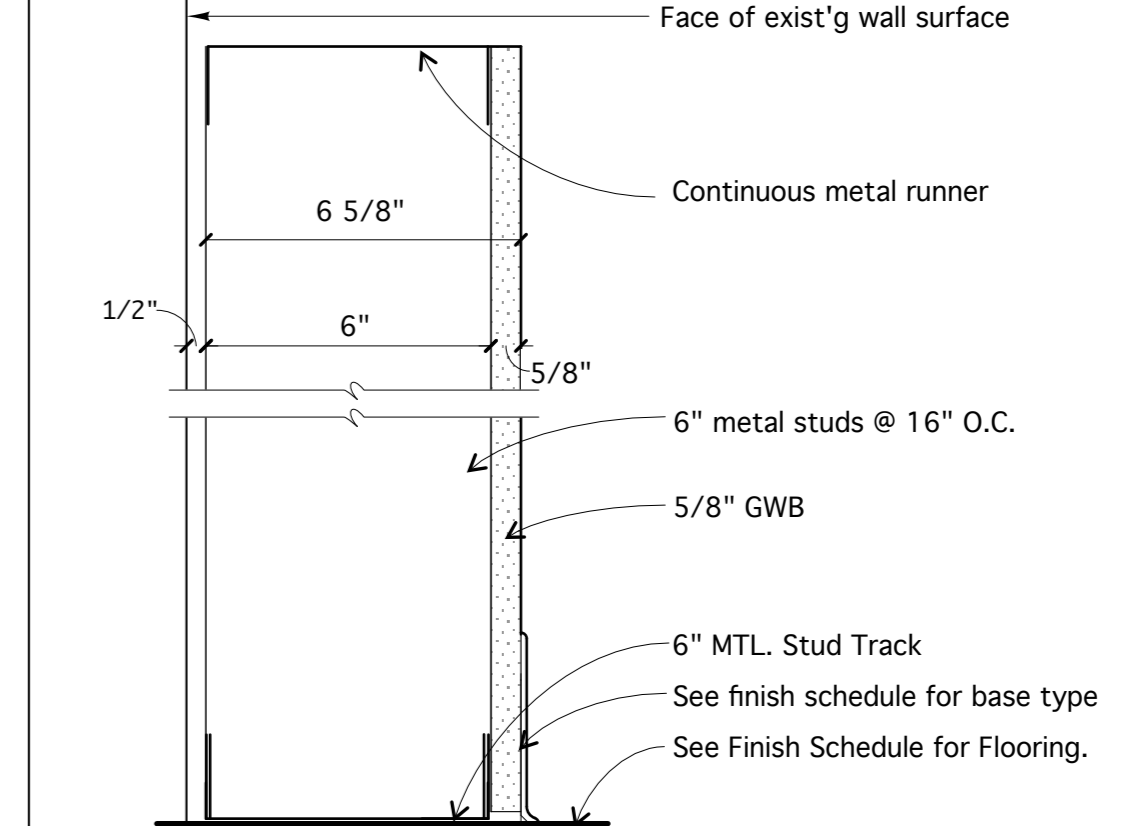
- 1 TYPE**
- 1 AS DRAWN
 - 1A Delete Acoustic Batts
 - 1B Same as TYPE 1C but 1 HOUR RATED
 - 1C Same as TYPE 1 but add RC-1 resilient channels @ 24" O.C. horiz. on one side.
 - 1D Same as TYPE 1 but 1 HOUR RATED



- 2 TYPE**
- 2 AS DRAWN
 - 2A Delete Acoustic Batts
 - 2B Same as TYPE 2 but 8" MTL STUDS & 1 HOUR RATED

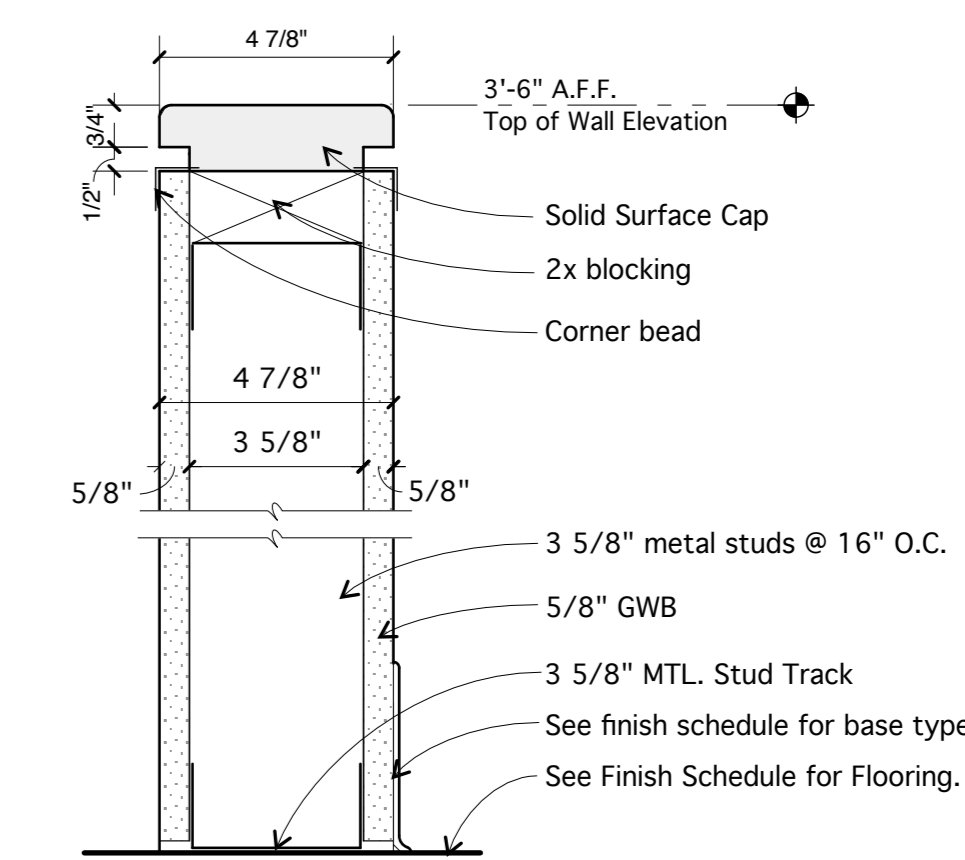


- 3 TYPE**
- 3 AS DRAWN
 - 3A Install 1/2" plywood at both sides under gwb same as TYPE 3 but add RC-1 resilient channels @ 24" o.c. on side opposite plywood
 - 3B same as TYPE 3 but 1 HOUR RATED
 - 3C same as TYPE 3A but 1 HOUR RATED
 - 3D same as TYPE 3A but 1 HOUR RATED



- 4 TYPE**
- 4 As Drawn
 - 4A 3 5/8" MTL STUDS INSTEAD OF 6" MTL STUDS

PARTITION NOTES:
SEE PARTITION KEY PLAN ON A1.1 FOR LOCATIONS OF PARTITIONS SCHEDULED TO EXTEND UP TO UNDERSIDE OF DECK ABOVE. PARTITIONS NOT NOTED AS GOING FULL HEIGHT SHALL EXTEND TO A POINT 6" TO 8" ABOVE THE FINISH CEILING.



- 5 TYPE**
- 5 As Drawn