

**PRODUCT SPECIFICATIONS**

ACT 1: CertainTeed 'Performa-Symphony F' 24"x 24" x1" fiberglass lay in tile #13402-IOF1 w/ narrow reveal edge for interface with aluminum CertainTeed 'Elite Narrow Stab System' 9/16" White Exposed Tee- grid.

ACT 2: CertainTeed 'Performa-Symphony M' 24"x 24" x3/4" mineral fiber lay in tile #1222-IOF1 w/ narrow reveal edge for interface with aluminum CertainTeed 'Elite Narrow Stab System' 9/16" White Exposed Tee- grid.

ACT 3: (WOOD) Armstrong 'Woodworks' Linear wood suspended Ceiling System - "Nominal 6" Module" #6460W1-NMP - Maple w/ #5371 concealed suspension grid.

**CEILING LEGEND**

CT 8'-0" Indicates ceiling finish  
8'-0" Indicates ceiling height A.F.F.

Acoustical Ceiling Tile

Supply Air Diffuser

Return Air Grille

Exhaust Air Grille

Occupancy Sensor

GWB Soffit/Ceiling

1 HOUR RATED GWB Ceiling

**LIGHTING LEGEND**

See Lighting / Electrical drawings for specifications and details

2x4' recessed light fixture

2x2' recessed light fixture

Recessed downlight

Recessed linear wall washer

Recessed linear fixture

Linear pendant fixture

Recessed Downlight w/ Decorative trim ring

Wall sconce

Wall mounted decorative light fixture

Surface mounted ceiling fixture

Decorative Pendant Fixture

Decorative Down Light

Decorative Pendant

Track Light

See Lighting / Electrical drawings for specifications, details & other lighting elements such as exit signs, emergency lighting, and motion detectors

**CEILING TYPES**

C1 SUSPENDED 2X2 ACT TYPE 1

C2 SUSPENDED 2X2 ACT TYPE 2

C3 PTD GWB SOFFIT/CEILING

C4 EXPOSED STRUCTURE, DUCTWORK, CONDUIT SPRINKLER PIPING, ETC. - PAINTED.

C5 EXISTING GWB CEILING TO REMAIN - PAINT

C6 SUSPENDED WOOD SLAT CEILING - ACT TYPE 3

**NOTES**

1. IN INSTANCES WHERE ELECTRICAL LIGHTING PLANS AND REFLECTED CEILING PLANS ARE NOT IN AGREEMENT IN TERMS OF NUMBER OF FIXTURES, THE PLAN SHOWING THE MOST FIXTURES PREVAILS.

2. IN INSTANCES WHERE ELECTRICAL LIGHTING PLANS AND CEILING PLANS ARE NOT IN AGREEMENT IN TERMS OF FIXTURE LOCATIONS, CONSULT ARCHITECT.

**LIGHT FIXTURE MOUNTING NOTES**

(A) PENDANTS AT CANOPY - MOUNT BOTTOM @ 7'-6" A.F.F.

(B) MONORAIL 2 11'-4" A.F.F.; BOTTOM OF PENDANTS @ 8'-0" A.F.F.

(C) WALL MNTD. FIXTURE- BOTTOM OF BRACKET @ 8'-5" A.F.F.

(D) MONORAIL (7' LONG) FLUSH MOUNTED. BOTTOM OF PENDANTS @ 7'-0" A.F.F.

(E) SURFACE MNTD MONORAIL W/ PENDANTS ON 3" STAND OFFS

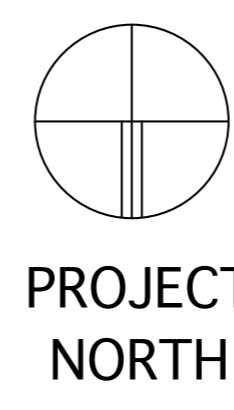
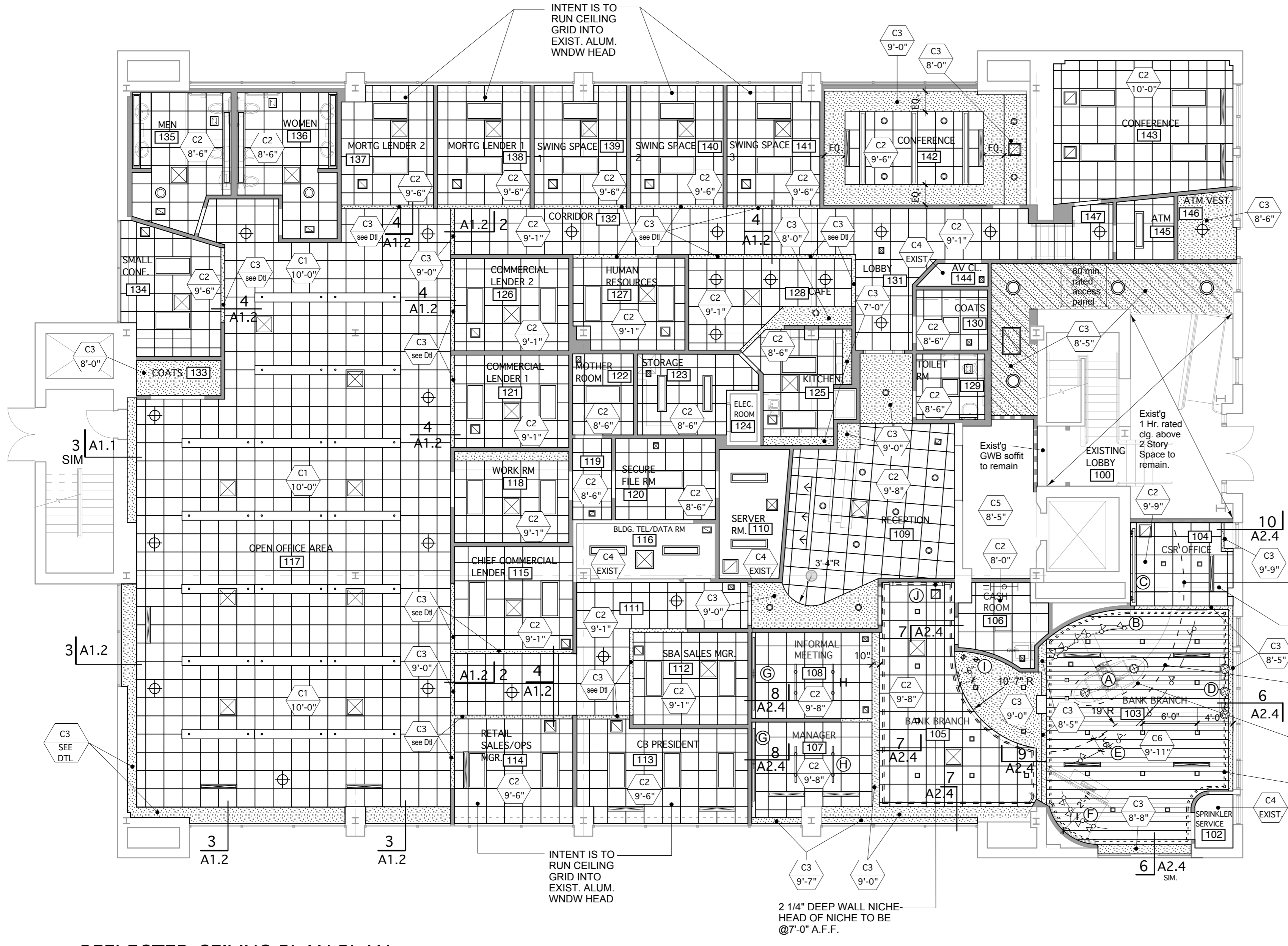
(F) MONORAIL @ 9'-4" (3" STANDOFFS); BOTTOM OF PENDANTS @ 8'-0" (18" STANDOFFS)

(G) RECESSED FIXTURE MOUNTS WITHIN ACT GRID SYSTEM

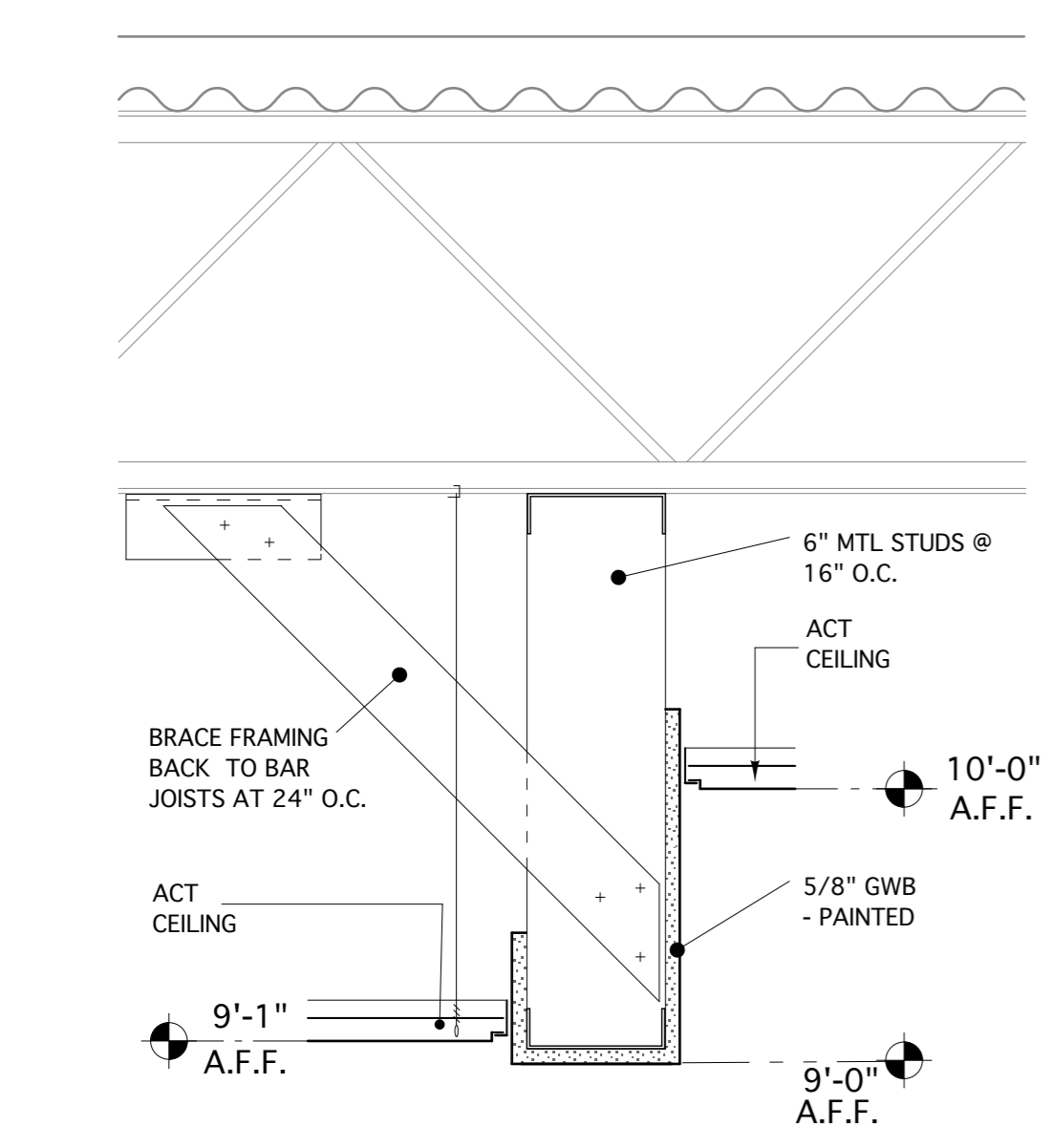
(H) MOUNT PENDANT WITH BOTTOM AT 8'-0" A.F.F.

(I) PENDANT WITH BOTTOM AT 7'-0" A.F.F.

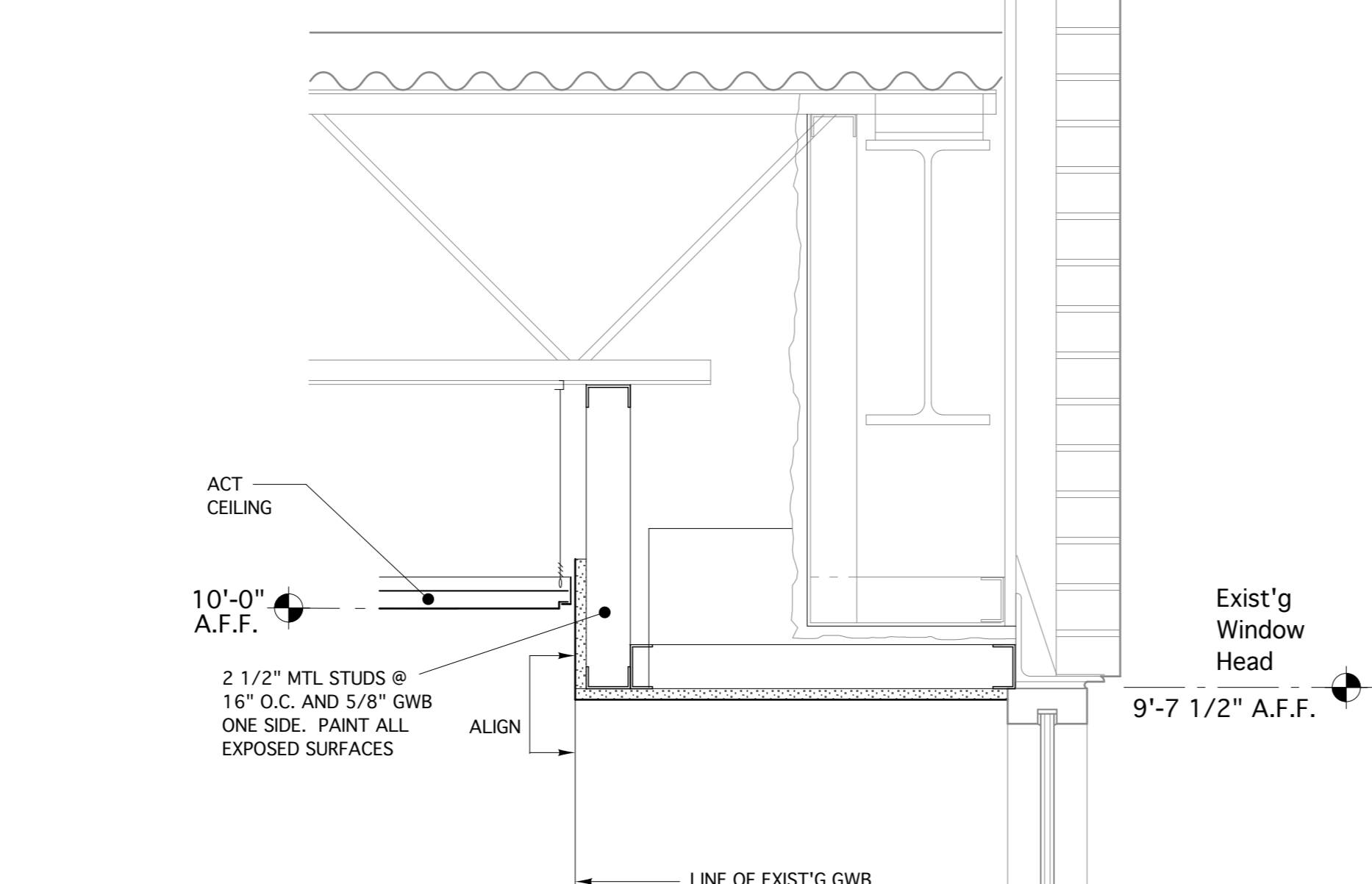
(J) DISPLAY LIGHT WITH BOTTOM AT 7'-6" A.F.F.



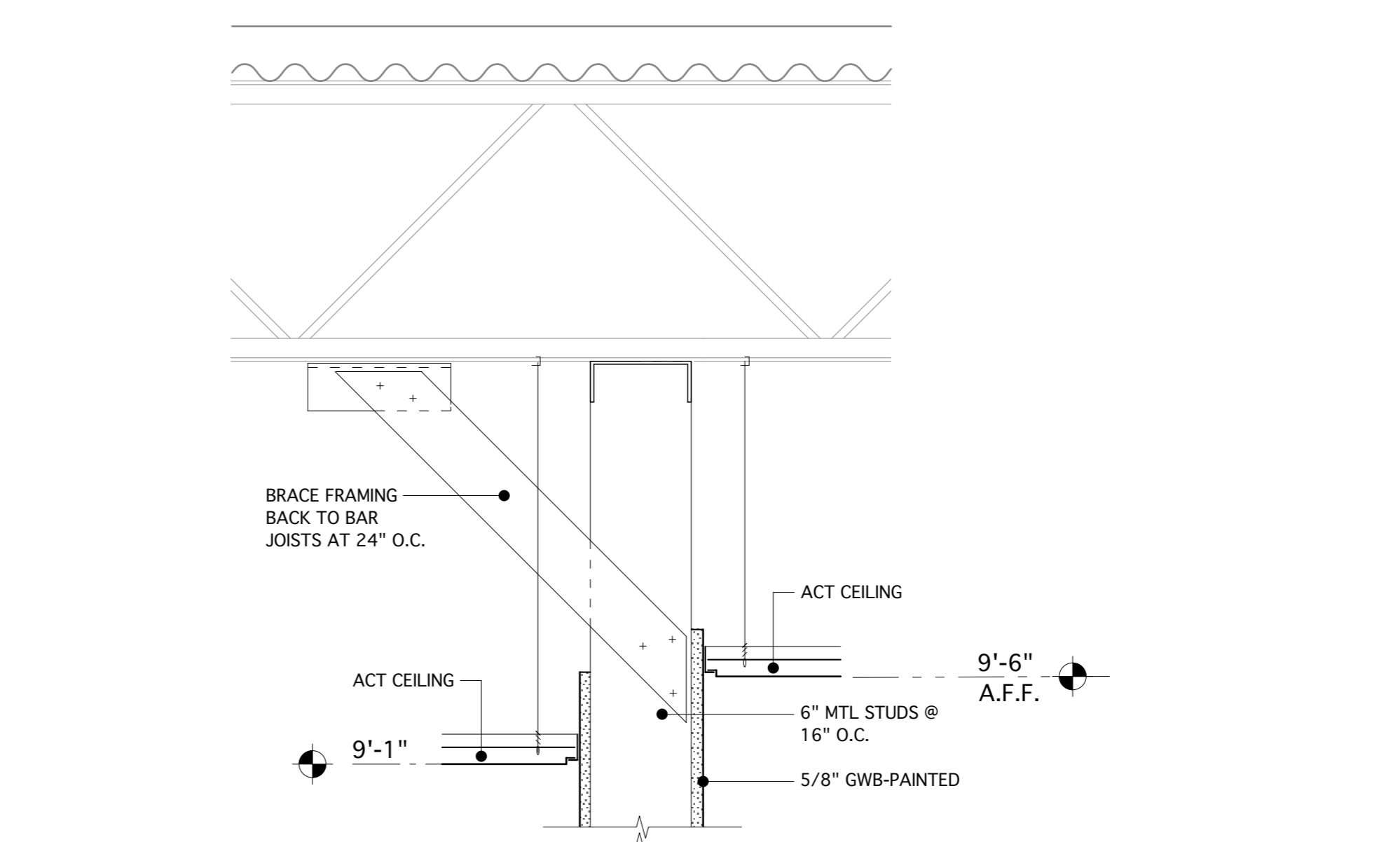
**1 REFLECTED CEILING PLAN PLAN**  
scale: 1/8" = 1'-0"



**2 SOFFIT DETAIL**  
scale: 1 1/2" = 1'-0"



**3 SOFFIT DETAIL**  
scale: 1 1/2" = 1'-0"



**4 SOFFIT DETAIL**  
scale: 1 1/2" = 1'-0"

COORDINATE REQUIRED SOFFIT HEIGHT WITH GLASS PARTITION SUPPLIER