



Branding / Bank Branch
 Interior Design:
THE ELEMENT GROUP
 125 Brewery Lane
 Suite #9
 Portsmouth, NH 03801
 T. 603.319.8951

Structural Engineering:
STRUCTURAL INTEGRITY ENGINEERS
 77 Oak Street
 Portland, ME 04101
 T. 207.774.4614

HVAC & plumbing
 Engineering:
MECHANICAL SYSTEMS ENGINEERS
 Royal River Center, Unit 10
 10 Forest Falls Drive
 Yarmouth, ME 04096
 T. 207.846.1441

Electrical Engineering:
SWIFTCURRENT ENGINEERING
 Royal River Center, Unit 4B
 10 Forest Falls Drive
 Yarmouth, ME 04096
 T. 207.847.9280



Portland
 Branch
 27 Pearl Street
 1st Floor Tenant
 Space
 Portland, Maine

ISSUED FOR PERMIT
 November 20th, 2014

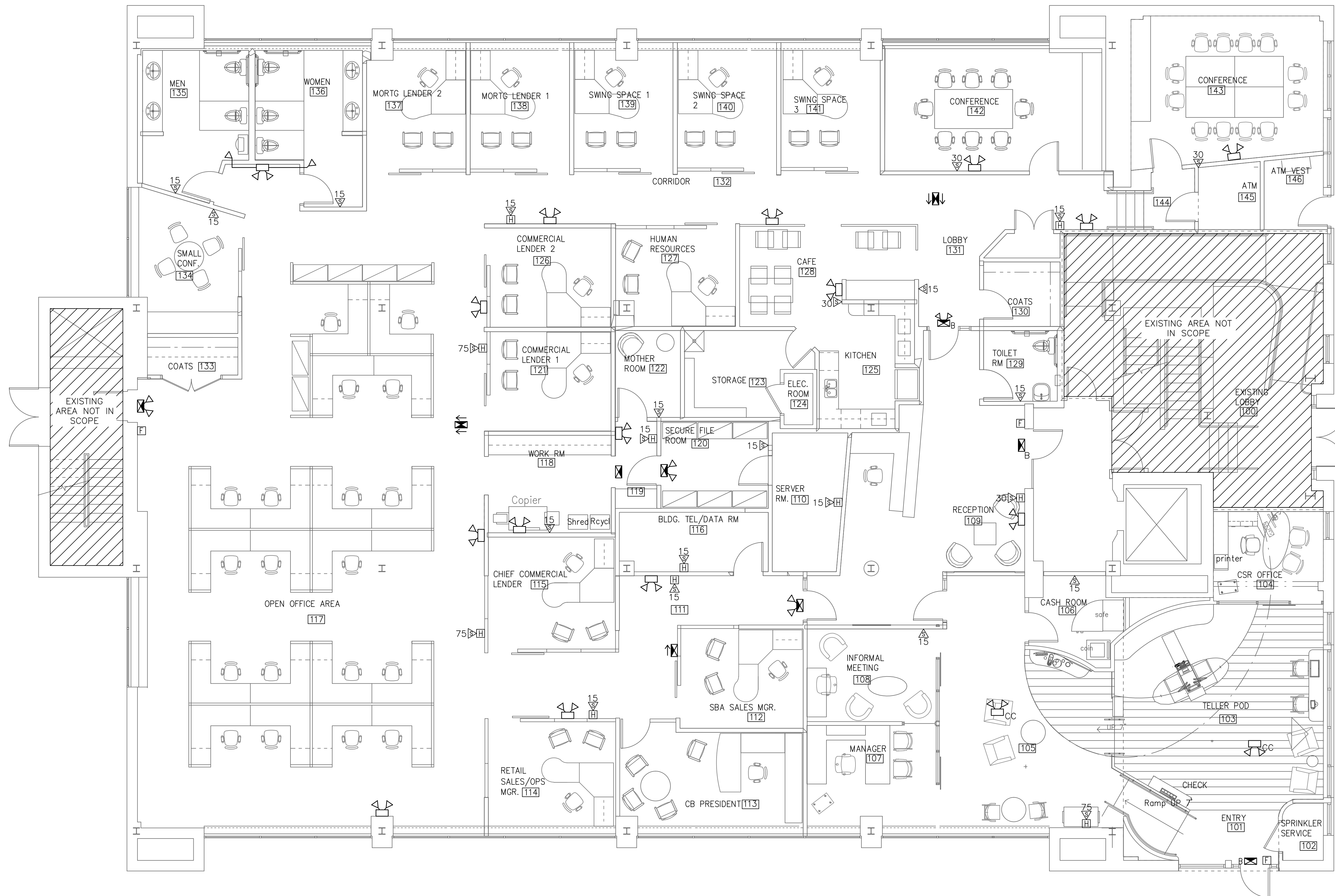
ELECTRICAL LIFE SAFETY PLAN

Scale: As Noted

E4.0

NOTES:

- SEE E.O.0 FOR LEGEND, ABBREVIATIONS AND GENERAL NOTES.



1 ELECTRICAL LIFE SAFETY PLAN
 SCALE: 3/16"=1'