



Branding / Bank Branch Interior Design:
THE ELEMENT GROUP

125 Brewery Lane
Suite #9
Portsmouth, NH 03801
T. 603.319.8951

Structural Engineering:
STRUCTURAL INTEGRITY ENGINEERS

77 Oak Street
Portland, ME 04101
T. 207.774.4614

HVAC & plumbing Engineering:
MECHANICAL SYSTEMS ENGINEERS

Royal River Center, Unit 10
10 Forest Falls Drive
Yarmouth, ME 04096
T. 207.846.1441

Electrical Engineering:
SWIFT CURRENT ENGINEERING

Royal River Center, Unit 4B
10 Forest Falls Drive
Yarmouth, ME 04096
T. 207.847.9280



Portland Branch

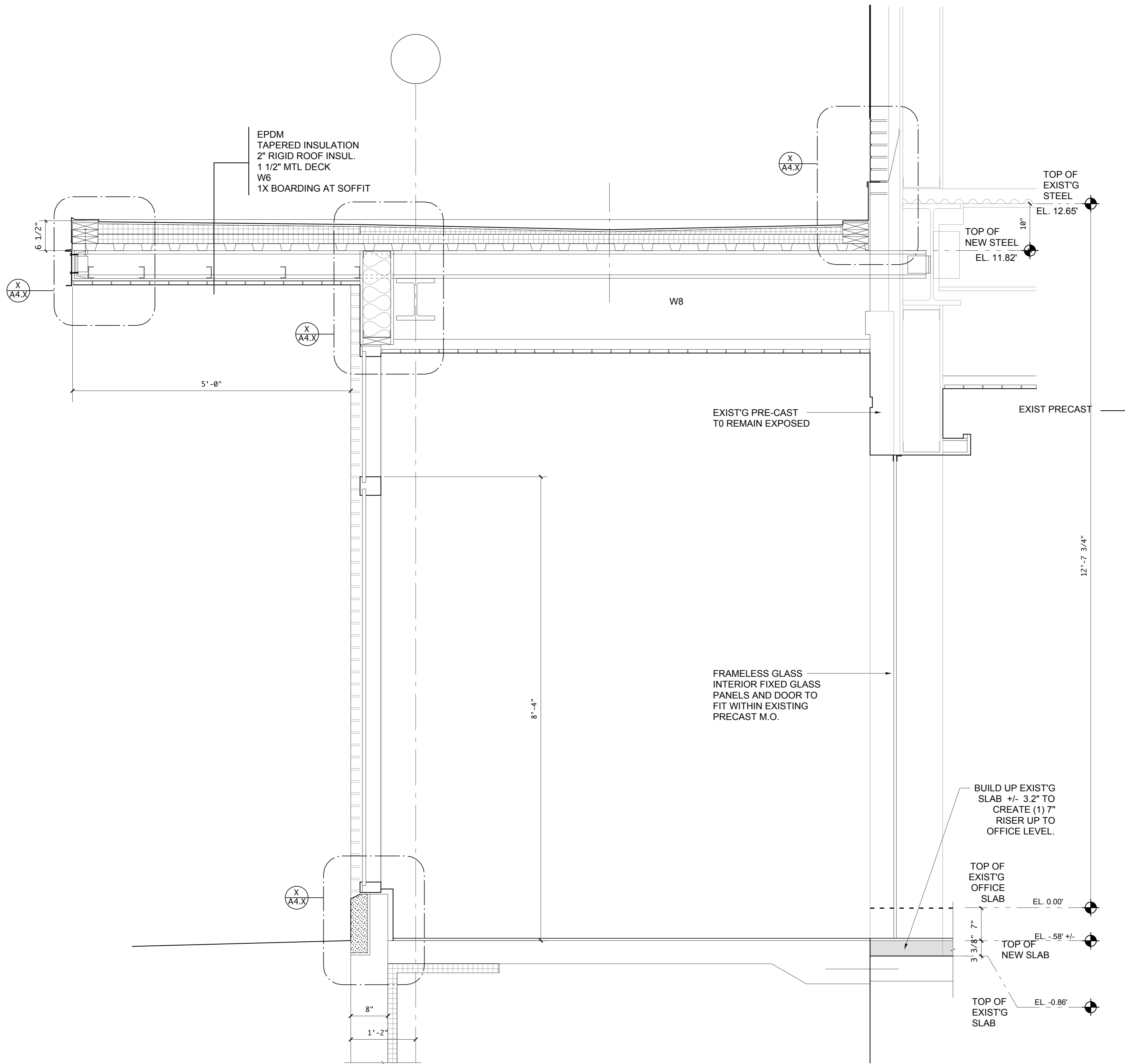
27 Pearl Street
1st Floor Tenant Space
Portland, Maine

SCHEMATIC DESIGN
October 21, 2014

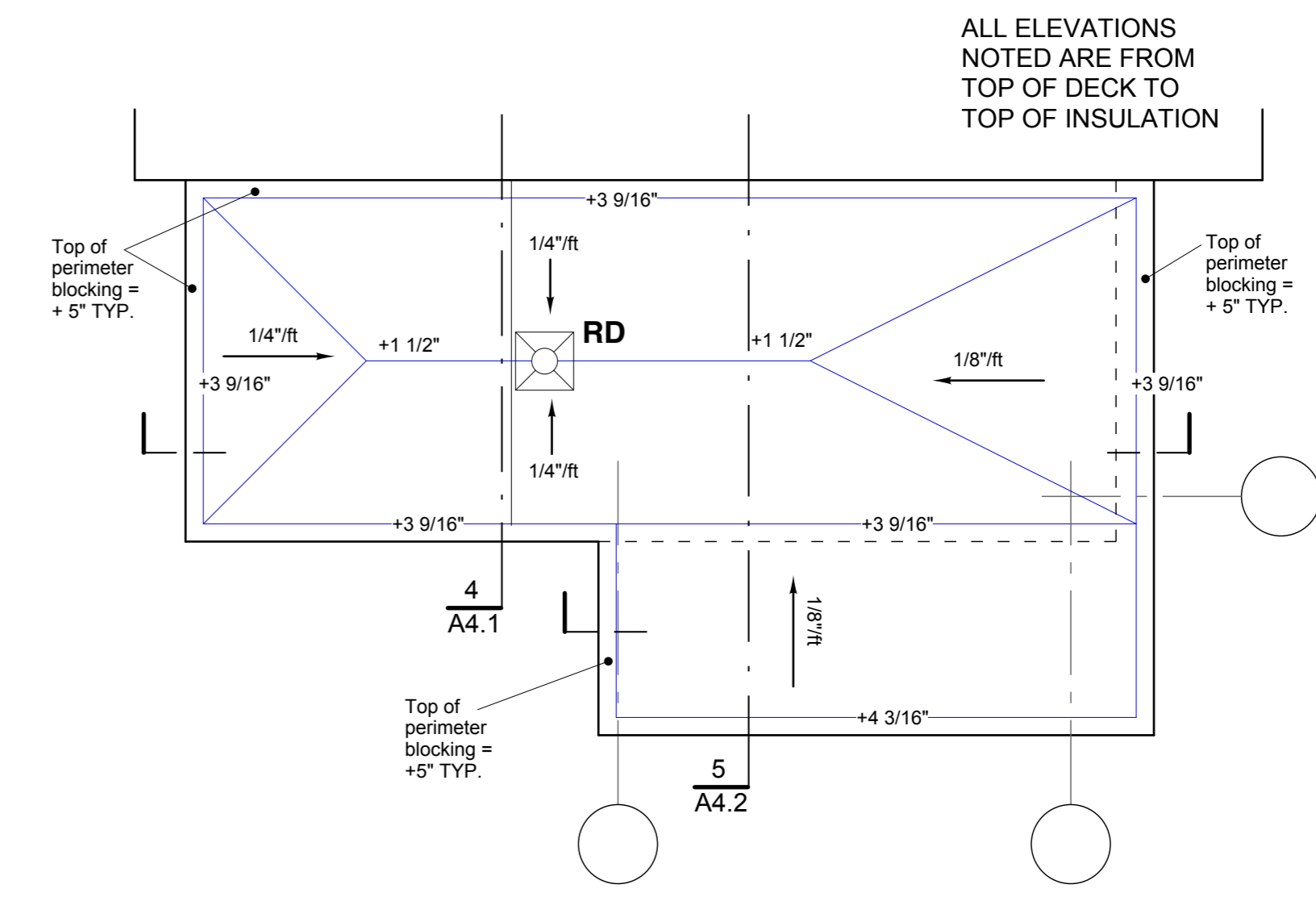
VESTIBULE SECTIONS AND DETAILS

Scale: As Noted

A4.2



5 WALL SECTION
scale: 1" = 1'-0"



6 VESTIBULE ENLARGED ROOF PLAN
scale: 1/4" = 1'-0"