



Branding / Bank Branch Interior Design:
THE ELEMENT GROUP
125 Brewery Lane
Suite #9
Portsmouth, NH 03801
T. 603.319.8951

Structural Engineering:
STRUCTURAL INTEGRITY ENGINEERS
77 Oak Street
Portland, ME 04101
T. 207.774.4614

HVAC & plumbing Engineering:
MECHANICAL SYSTEMS ENGINEERS

Royal River Center, Unit 10
10 Forest Falls Drive
Yarmouth, ME 04096
T. 207.846.1441

Electrical Engineering:
SWIFT CURRENT ENGINEERING

Royal River Center, Unit 4B
10 Forest Falls Drive
Yarmouth, ME 04096
T. 207.847.9280



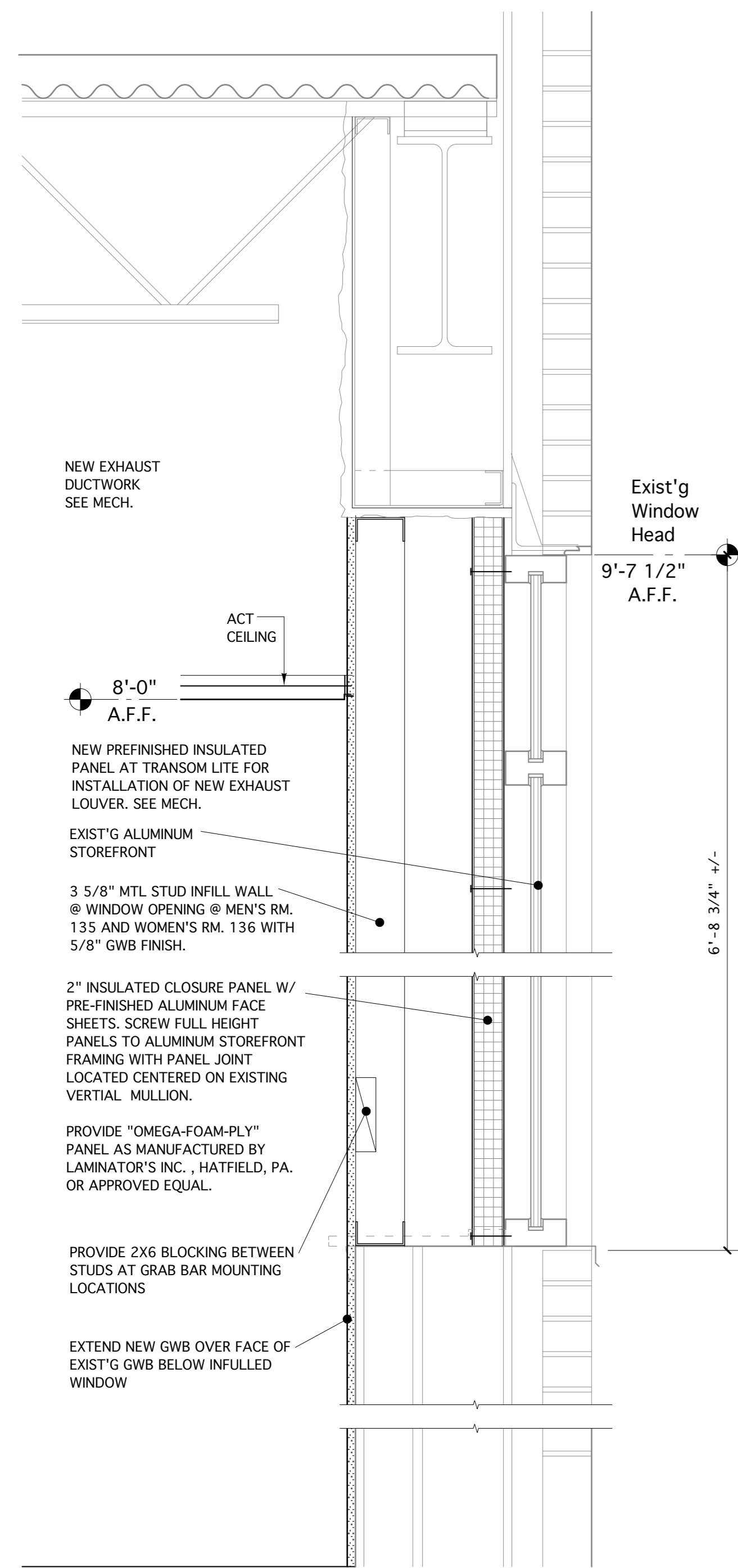
Portland Branch
27 Pearl Street
1st Floor Tenant Space
Portland, Maine

PERMIT SET- NOT FOR CONSTRUCTION
December 12, 2014

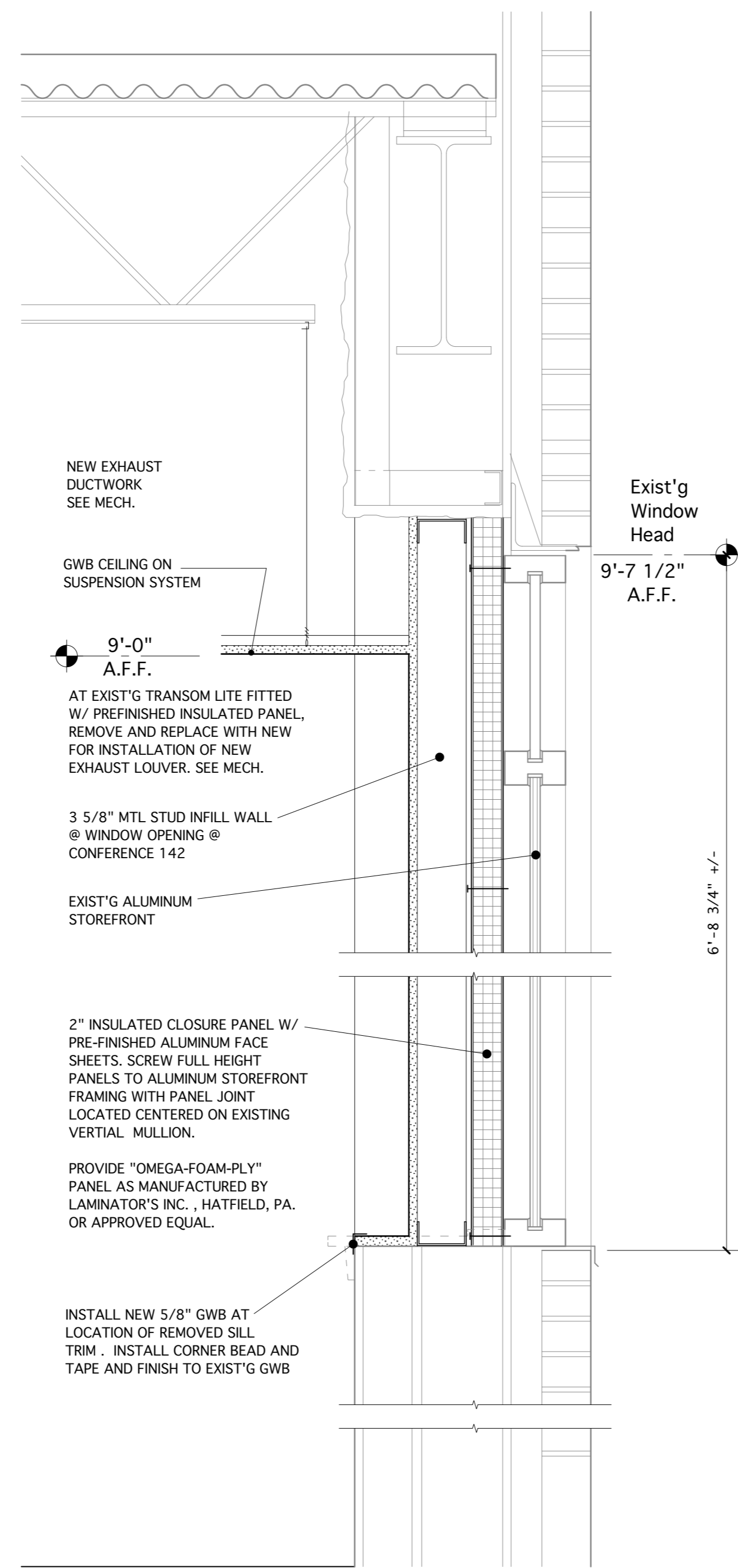
PARTITION TYPES / DETAILS

Scale: As Noted

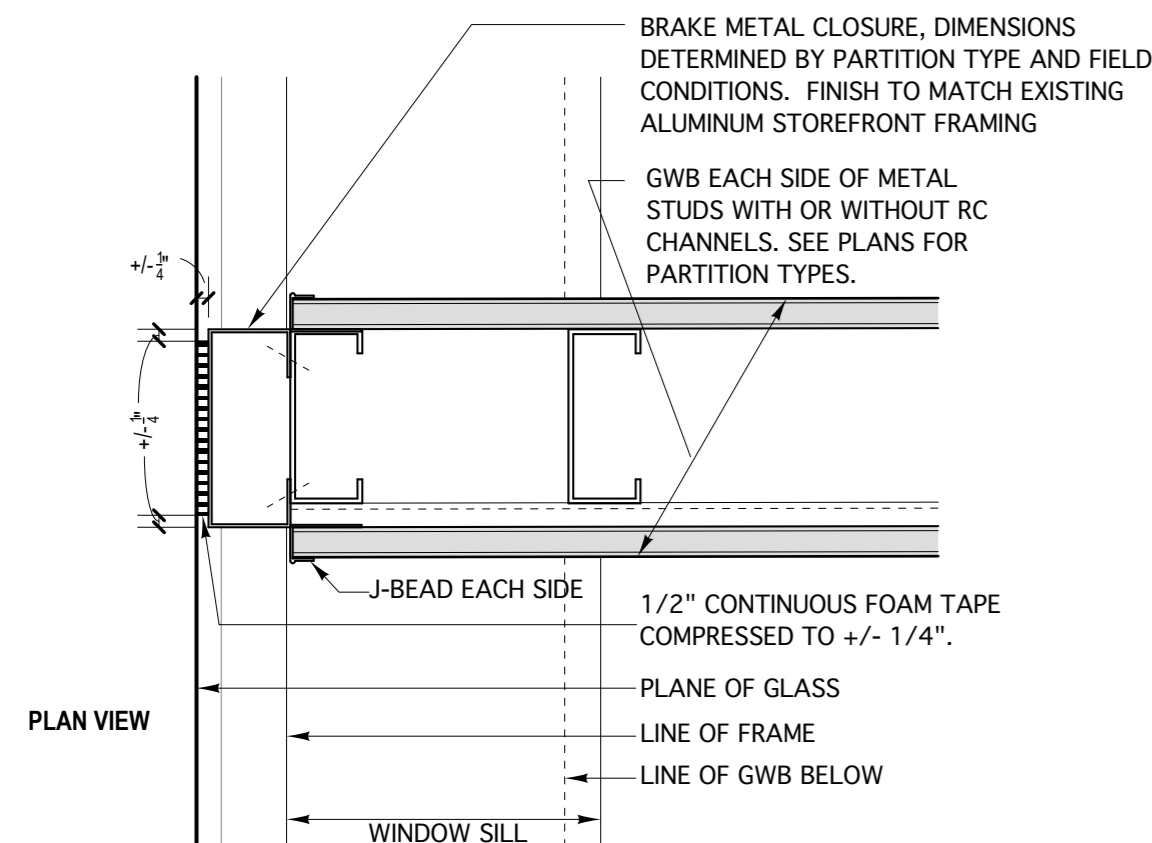
A2.1



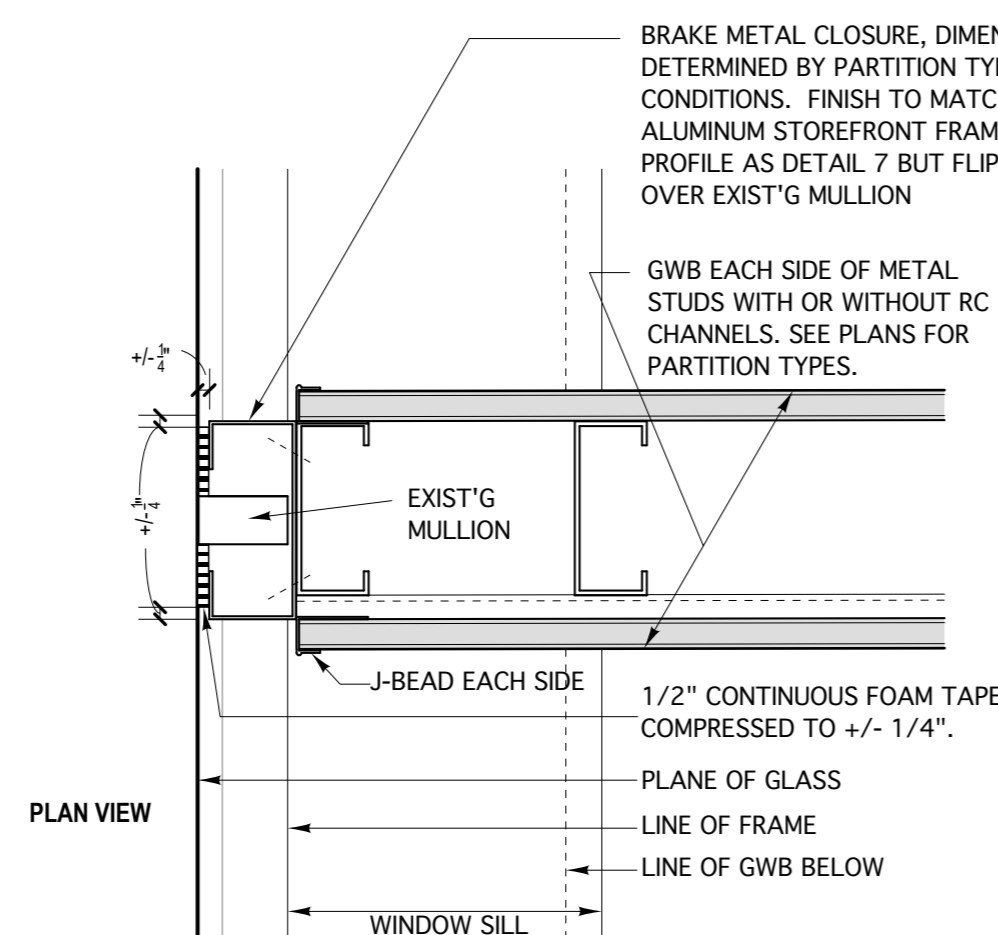
5 WINDOW INFILL DETAIL AT MEN'S /WOMEN'S ROOMS
scale: 1 1/2" = 1'-0"



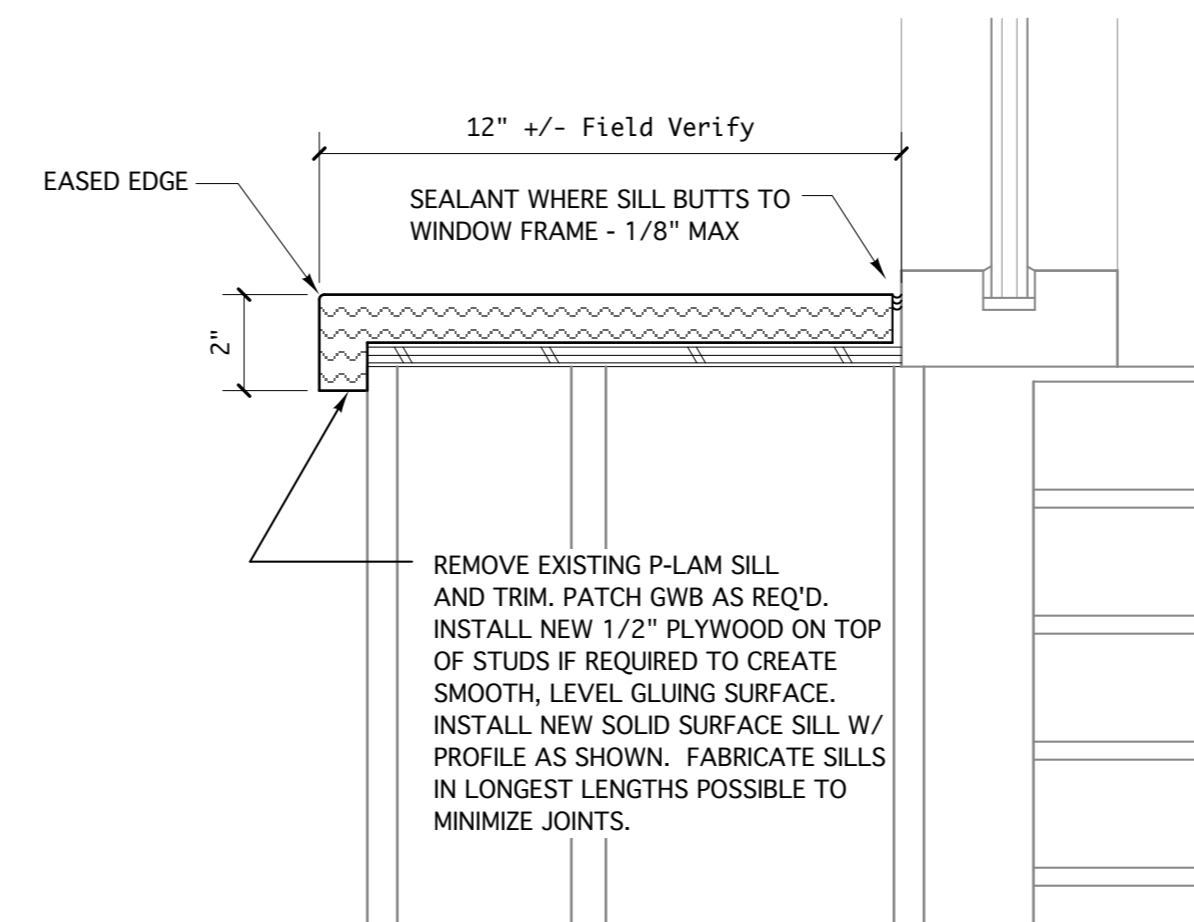
6 WINDOW INFILL DETAIL AT CONFERENCE RM. 142
scale: 1 1/2" = 1'-0"



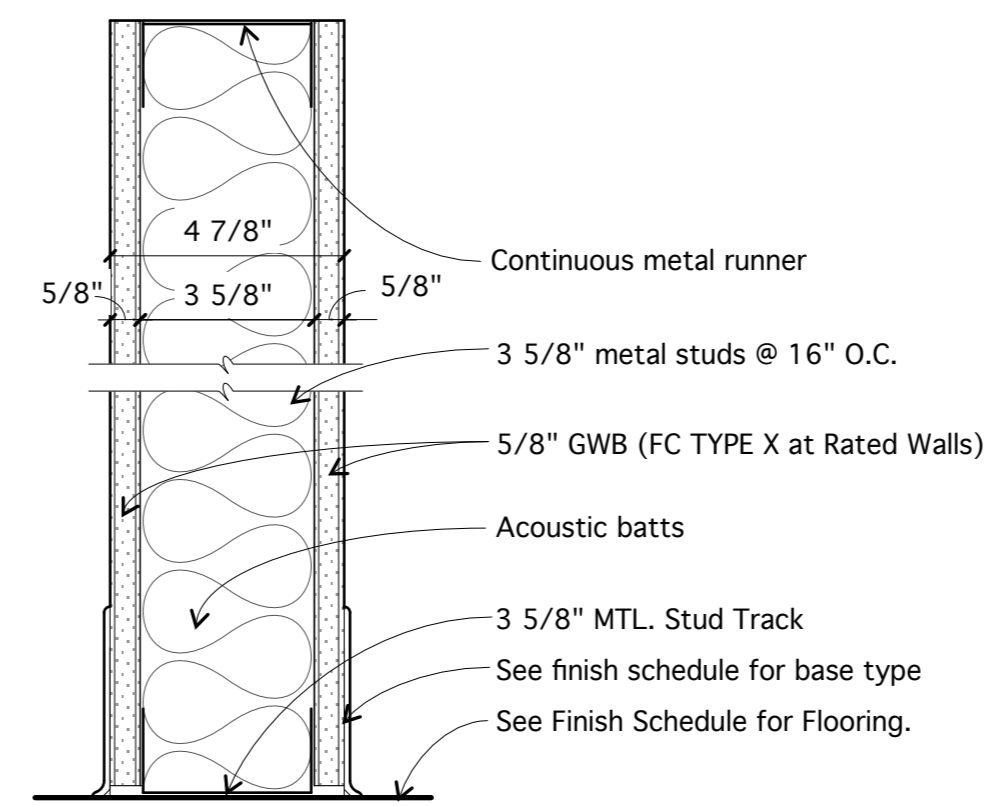
7 PARTITION DETAIL AT EXIST'G WINDOW
scale: 3" = 1'-0"



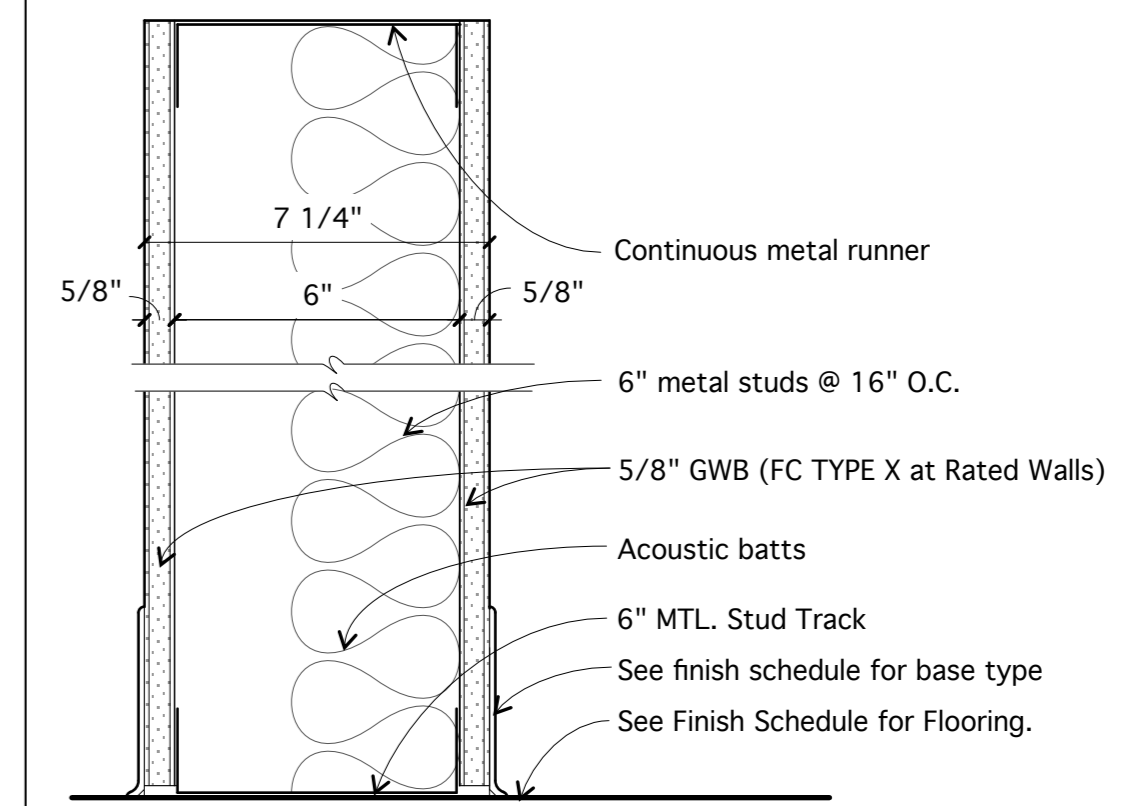
8 PARTITION DETAIL AT EXIST'G WINDOW
scale: 3" = 1'-0"



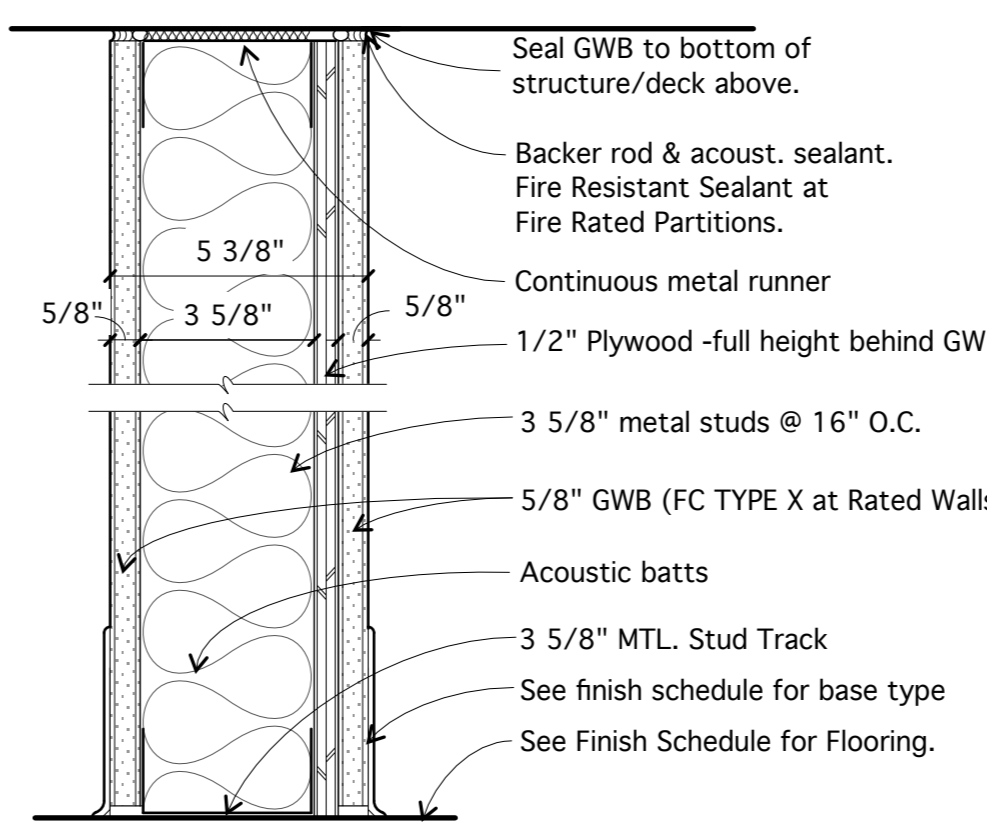
9 TYPICAL WINDOW SILL DETAIL
scale: 3" = 1'-0"



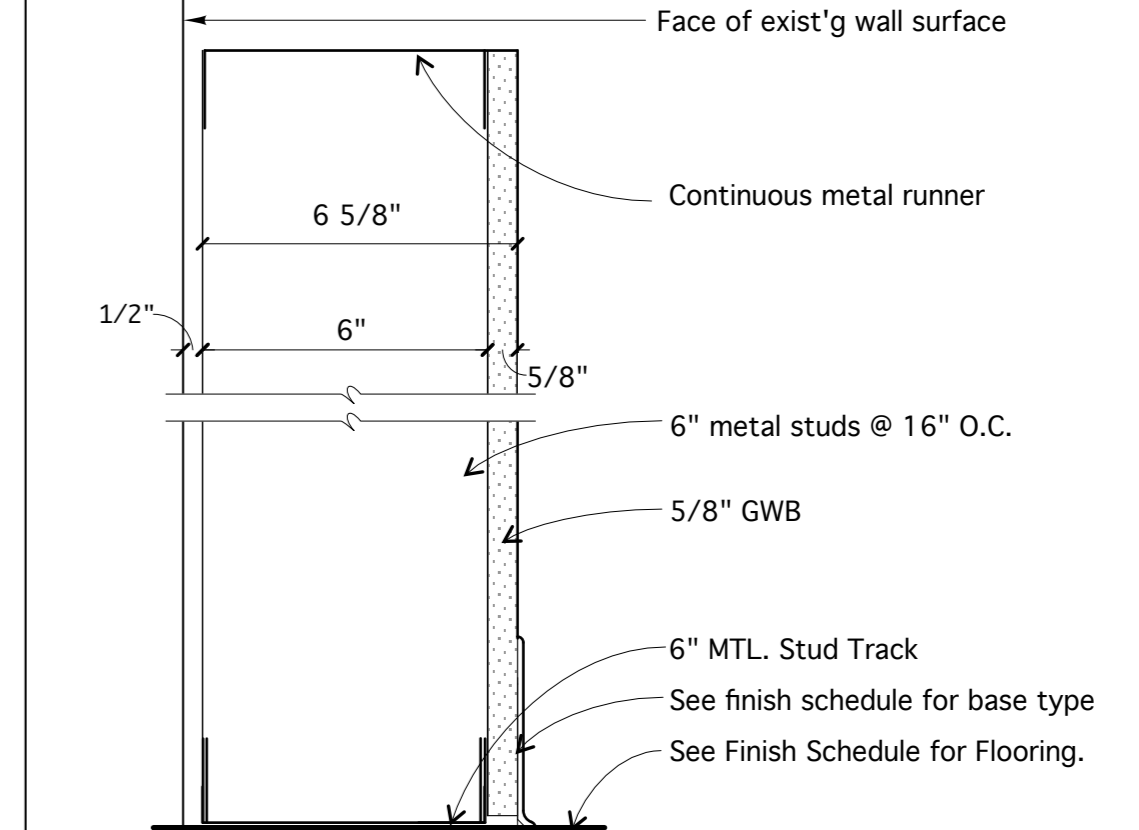
- 1 TYPE**
- 1 AS DRAWN
 - 1A Delete Acoustic Batts
 - 1B Same as TYPE 1C but 1 HOUR RATED
 - 1C Same as TYPE 1 but add RC-1 resilient channels @ 24" O.C. horiz. on one side.



- 2 TYPE**
- 2 AS DRAWN
 - 2A Delete Acoustic Batts
 - 2B Same as TYPE 2 but 8" MTL STUDS & 1 HOUR RATED

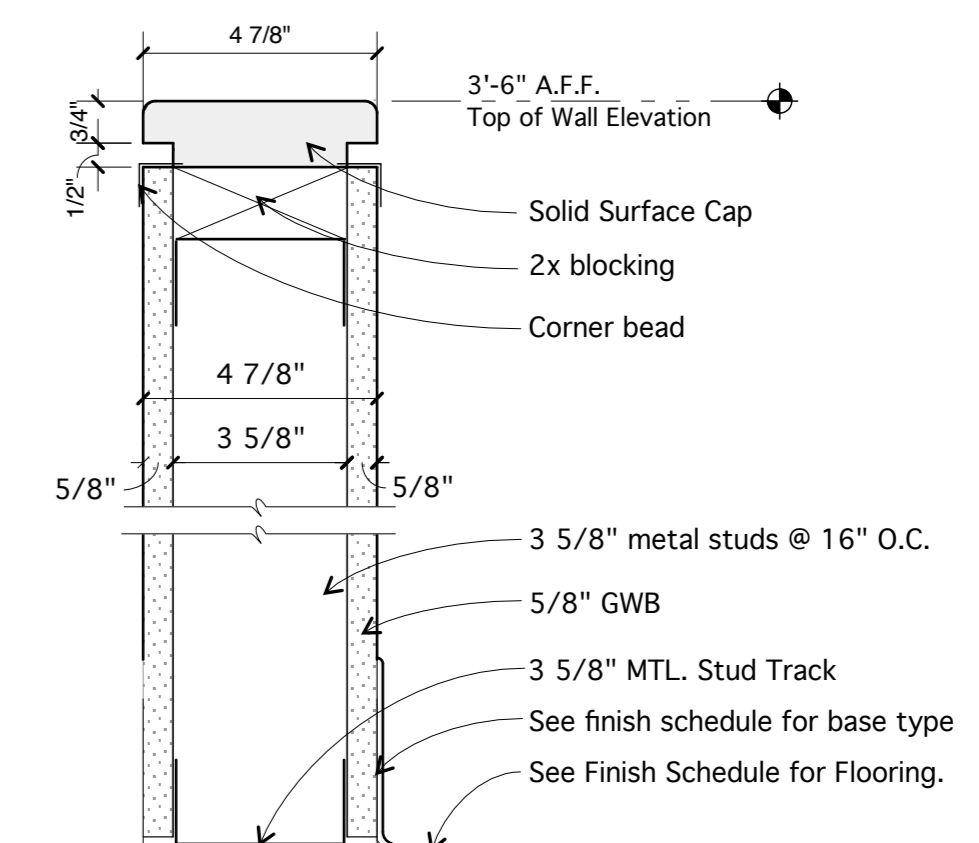


- 3 TYPE**
- 3 AS DRAWN
 - 3A Install 1/2" plywood at both sides under gwb same as TYPE 3 but add RC-1 resilient channels @ 24" o.c. on side opposite plywood
 - 3B same as TYPE 3 but 1 HOUR RATED
 - 3C same as TYPE 3A but 1 HOUR RATED

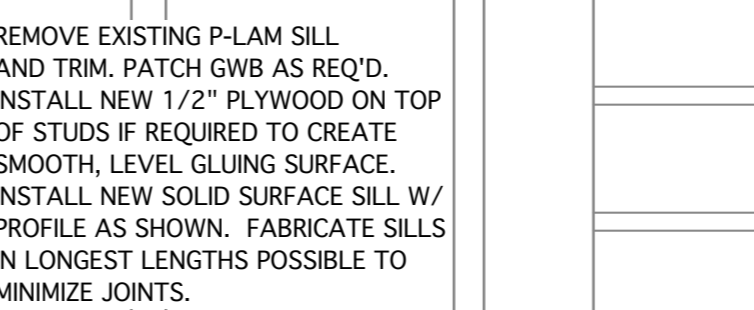


- 4 TYPE**
- 4 As Drawn

PARTITION NOTES:
SEE PARTITION KEY PLAN ON A1.1 FOR LOCATIONS OF PARTITIONS SCHEDULED TO EXTEND UP TO UNDERSIDE OF DECK ABOVE. PARTITIONS NOT NOTED AS GOING FULL HEIGHT SHALL EXTEND TO A POINT 6" TO 8" ABOVE THE FINISH CEILING.



- 5 TYPE**
- 5 As Drawn



A2.1