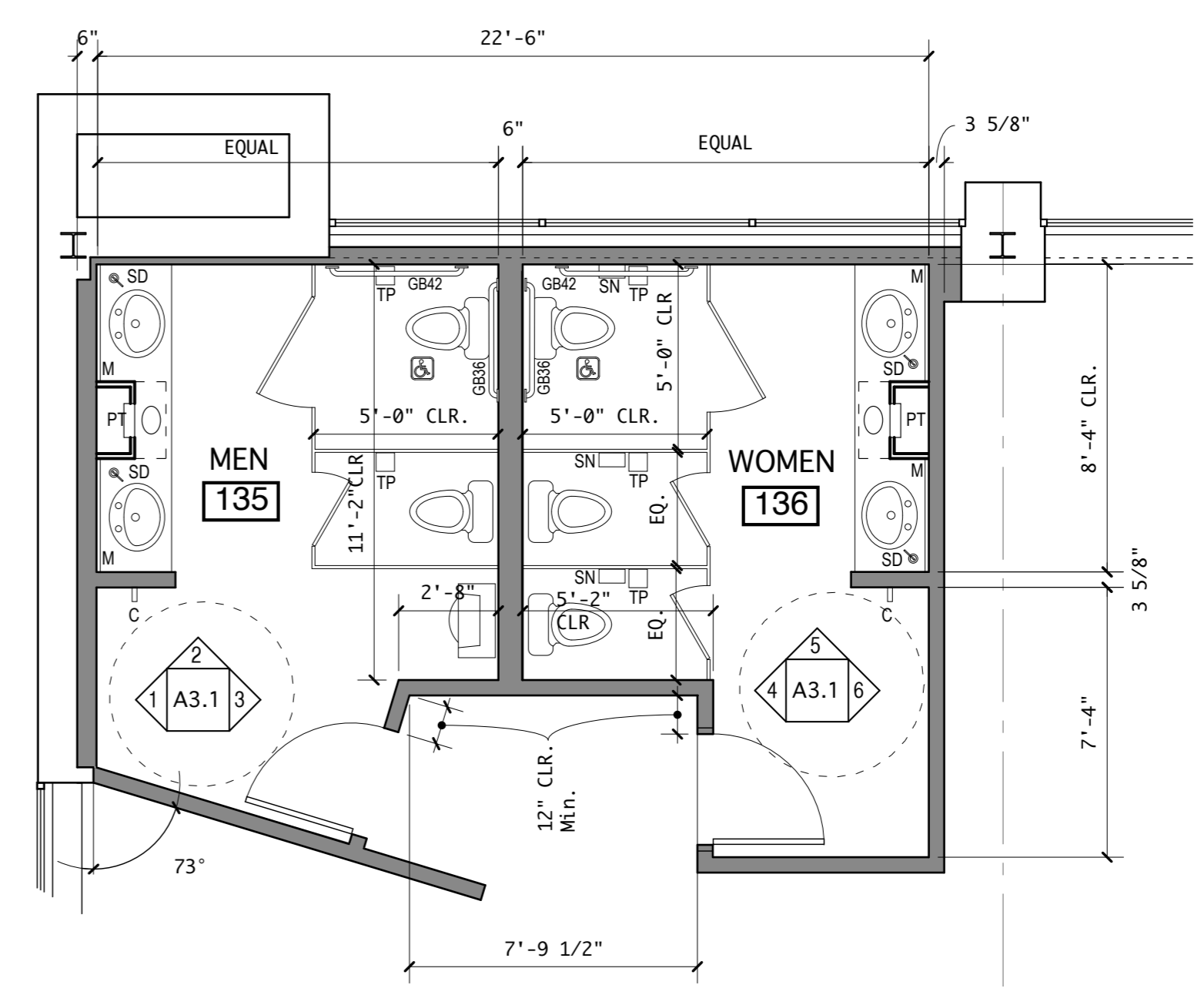
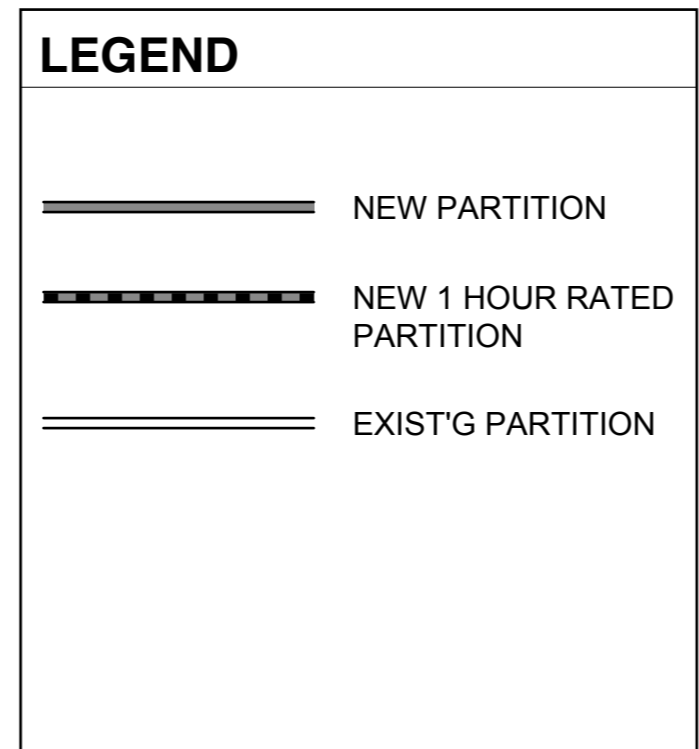


1 LAYOUT PLAN
scale: 1/8" = 1'-0"

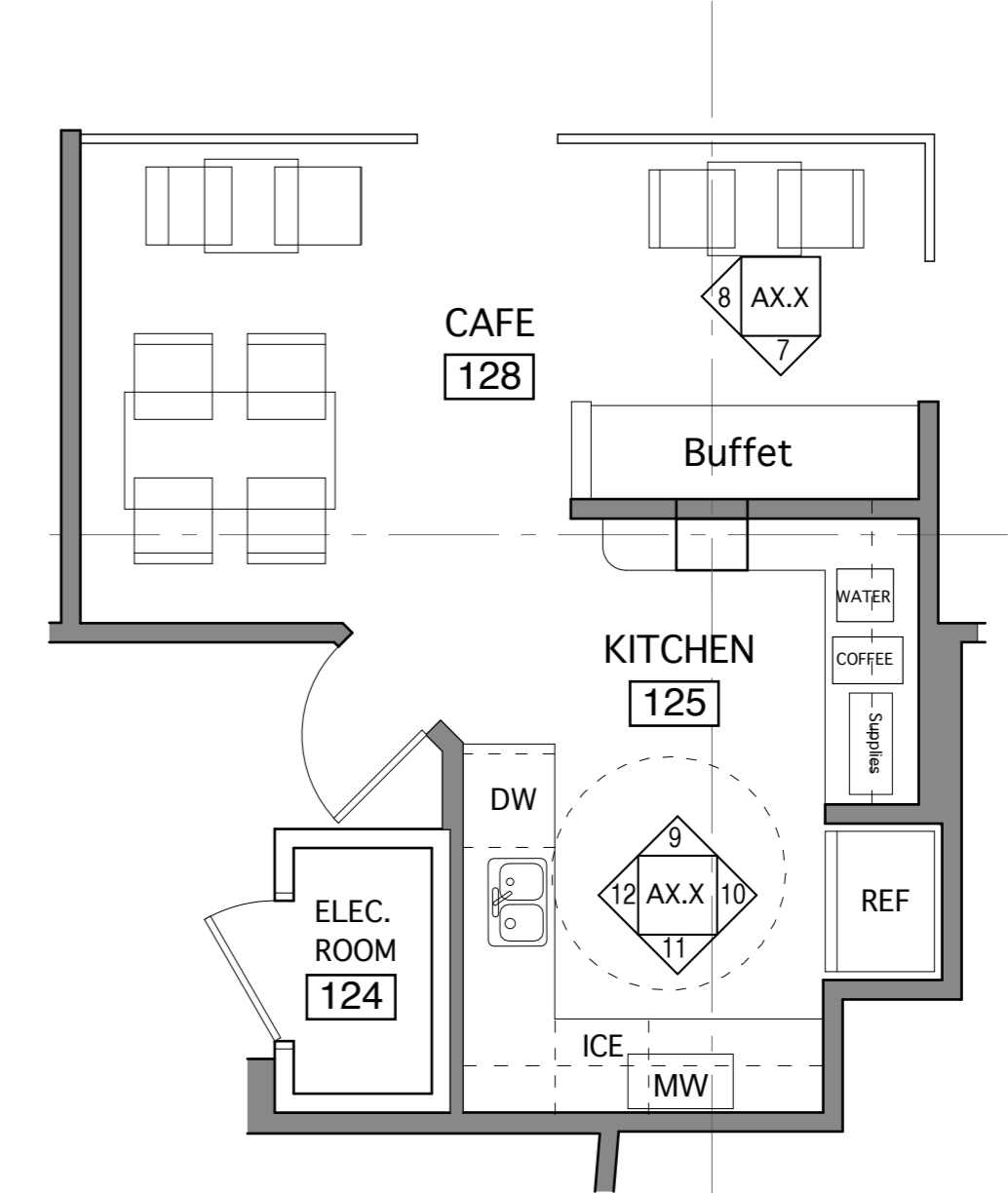


5 PARTITION KEY PLAN
scale: 1/16" = 1'-0"

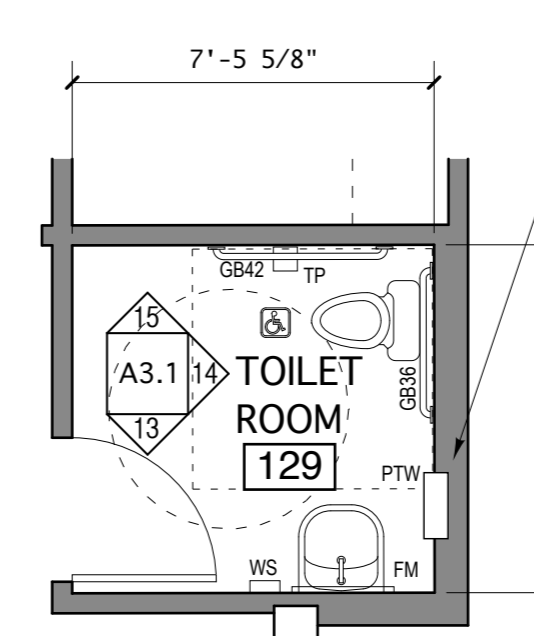
PARTITIONS AND SOFFIT LINES HIGHLIGHTED BY BOLD LINE ARE TO BE EXTENDED UP TO UNDER SIDE OF DECK ABOVE. ALL OTHER PARTITIONS SHALL EXTEND UP ABOVE FINISH CEILING +/- 8"



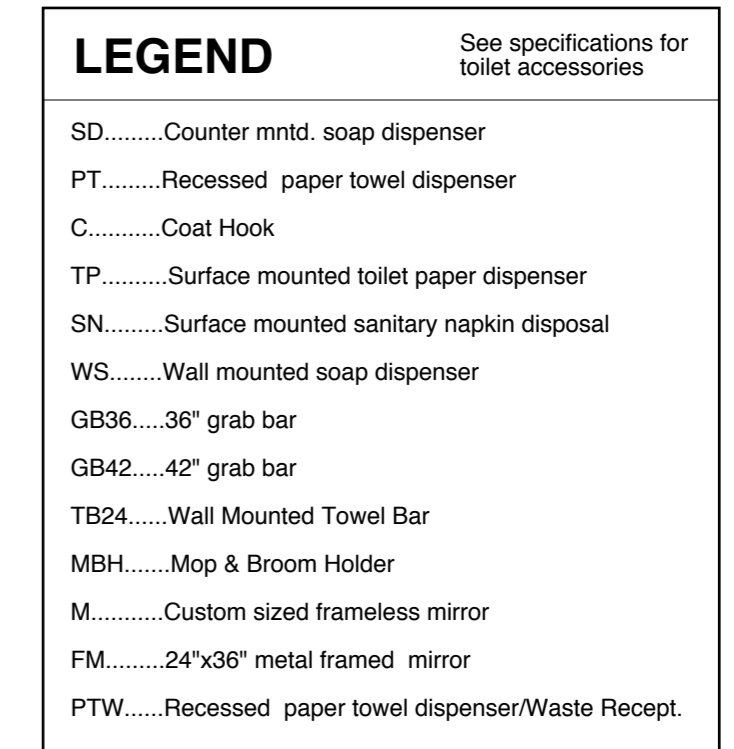
4 TOILET ROOM ENLARGED PLAN
scale: 1/4" = 1'-0"



3 KITCHEN ENLARGED PLAN
scale: 1/4" = 1'-0"



2 TOILET ROOM ENLARGED PLAN
scale: 1/4" = 1'-0"



Branding / Bank Branch Interior Design:
THE ELEMENT GROUP
125 Brewery Lane
Suite #9
Portsmouth, NH 03801
T. 603.319.9561

Structural Engineering:
STRUCTURAL INTEGRITY ENGINEERS

77 Oak Street
Portland, ME 04101
T. 207.774.4614

HVAC & plumbing Engineering:
MECHANICAL SYSTEMS ENGINEERS

Royal River Center, Unit 10
10 Forest Falls Drive
Yarmouth, ME 04096
T. 207.846.1441

Electrical Engineering:
SWIFT CURRENT ENGINEERING

Royal River Center, Unit 4B
10 Forest Falls Drive
Yarmouth, ME 04096
T. 207.847.9280



Portland Branch

27 Pearl Street
1st Floor Tenant Space
Portland, Maine

PERMIT SET- NOT FOR CONSTRUCTION
December 12, 2014

LAYOUT PLAN / ENLARGED PLANS

Scale: As Noted