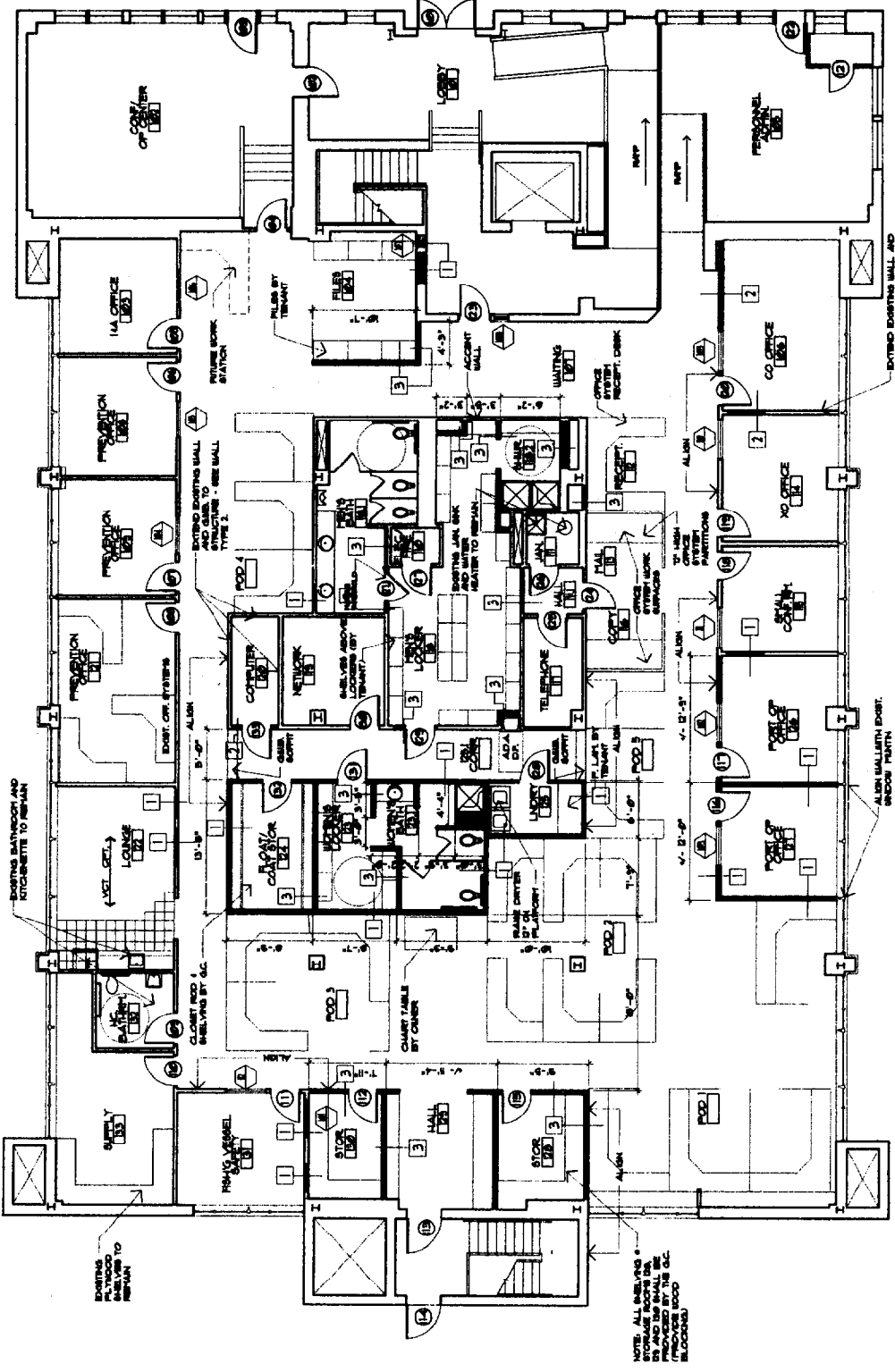


DEPT. OF BUILDING PERMITS  
CITY OF PORTLAND  
NOV 25 2002  
RECEIVED



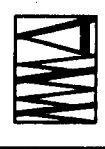
LEGEND:  
 --- EXISTING WALL TO REMAIN  
 --- PROPOSED NEW WALL

1 FLOOR PLAN  
 SCALE: 1/8" = 1'-0"

NOTES:  
 MECHANICAL, ELECTRICAL, AND  
 COMPUTER NETWORK ROOMS  
 ONLY.

ALUMINUM MULLIN DOOR.  
 SEE SECTION 5010.

NOTE: ALL WALLS AND  
 PARTITIONS TO BE REMOVED  
 SHALL BE REMOVED BY THE  
 CONTRACTOR. ALL WALLS TO  
 BE REMOVED SHALL BE  
 DEMOLISHED BY THE  
 CONTRACTOR.



**M A R K MUELLER ARCHITECTS**  
A.I.A.  
100 Commercial Street  
Suite 207  
Portland, Maine 04101  
Phone/Fax: 207.774.9067  
Email: mm.ard@mm.com

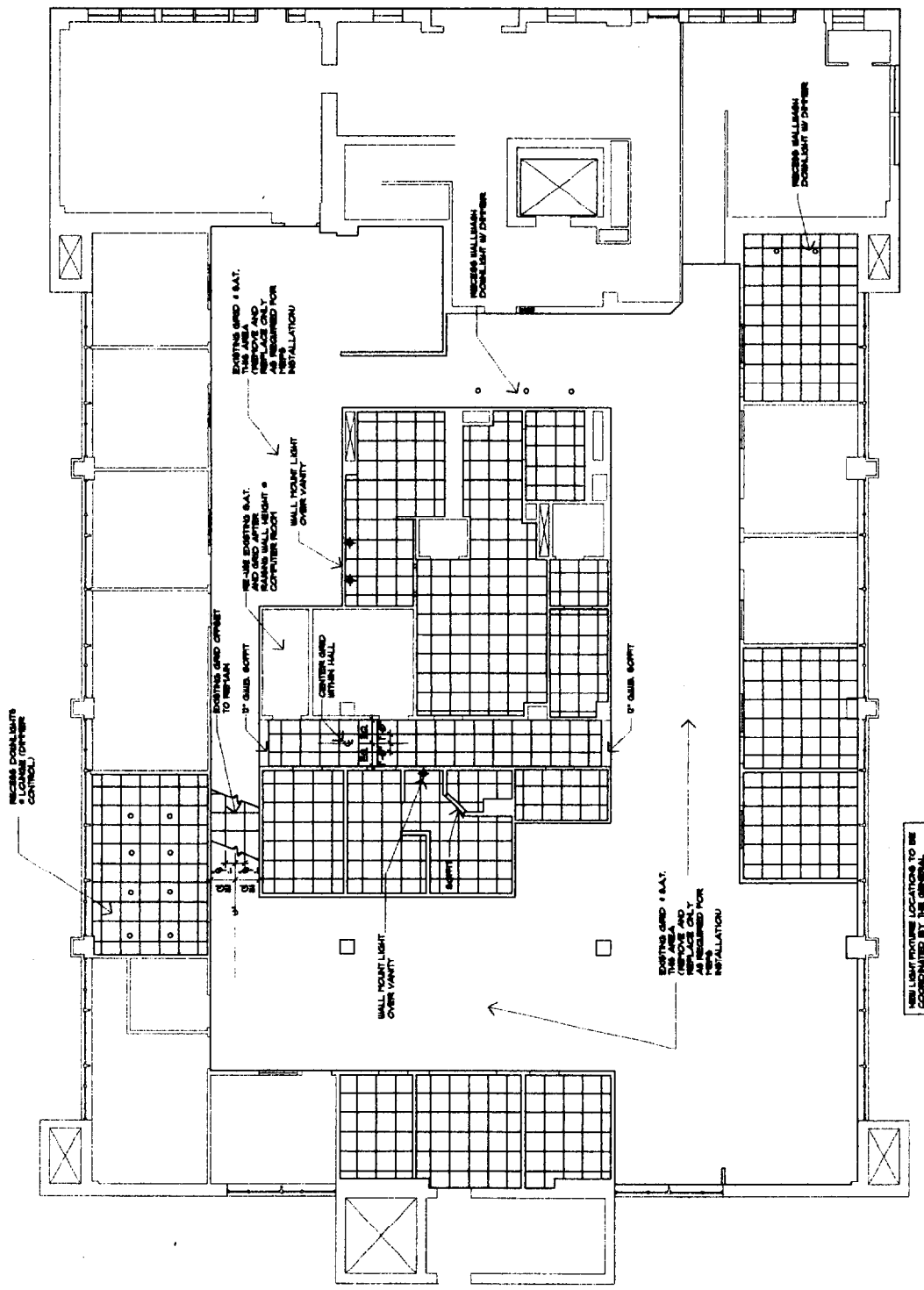
© COPYRIGHT  
MARK MUELLER ARCHITECTS

RENOVATION OF:  
**130 L.L.C.**  
27 PEARL ST.  
PORTLAND, MAINE

PROJECT	130 L.L.C.
DATE	NOV 25 2002
DRAWN BY	MM
CHECKED BY	MM
REVISION	

**A-2**

DEPT. OF BUILDING PERMITS  
CITY OF PORTLAND  
NOV 25 2002



**REFLECTED CEILING PLAN**  
SCALE: 1/8" = 1'-0"

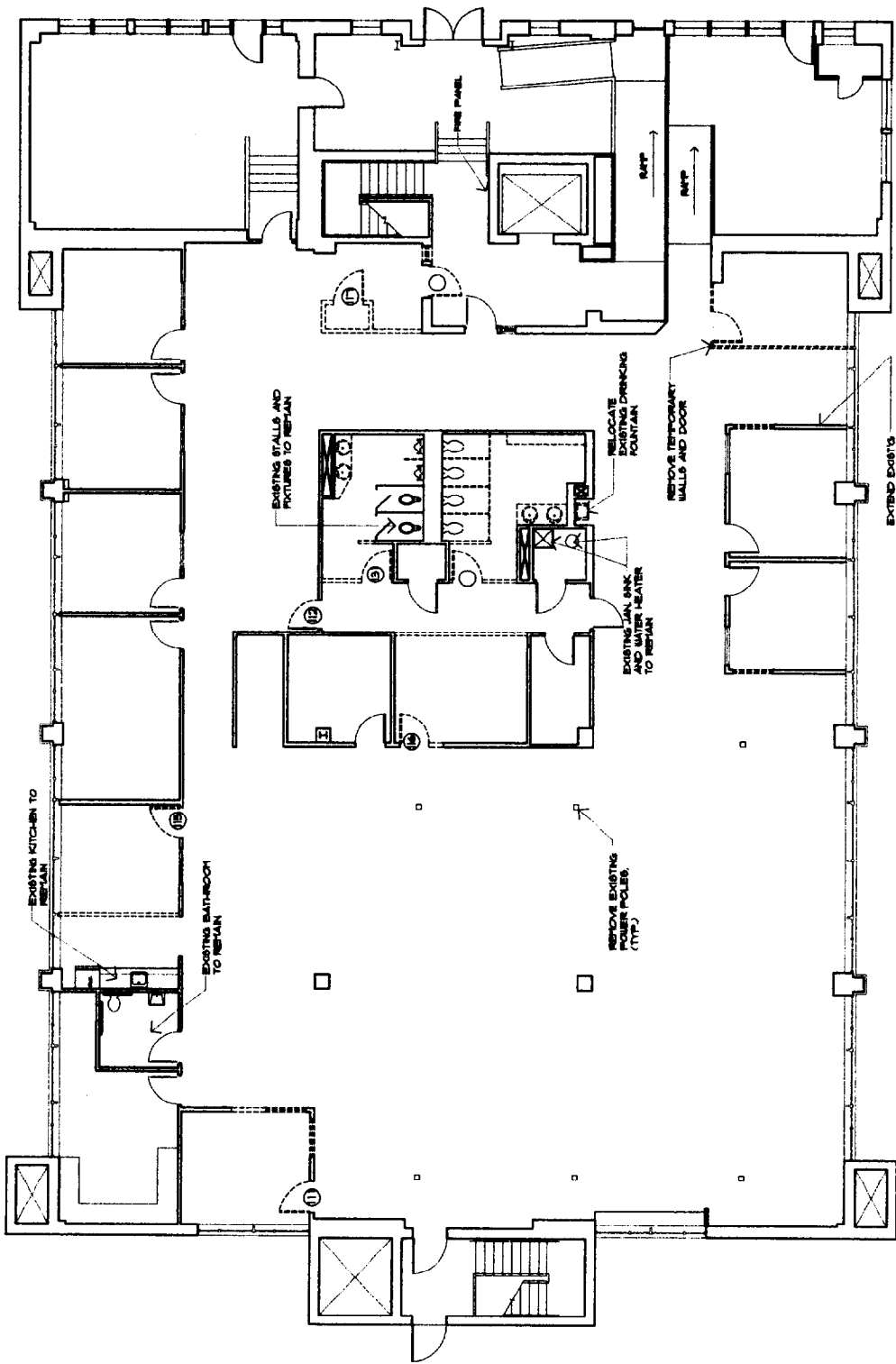
NEW LIGHT FIXTURE LOCATIONS TO BE PROVIDED BY THE CONTRACTOR.

- 1. SECURITY FIRE-ARM AND POWER (SECURITY EQUIPMENT BY TENANT)
- 2. POWER DISTRIBUTION FOR OFFICE SYSTEMS PER PLAN SET-102
- 3. NEW WIRING IS TO BE INSTALLED AS SHOWN AND PROVIDE ADDITIONAL OUTLETS FOR THE EQUIPMENT AS PROVIDED BY THE TENANT.
- 4. PROVIDE VOICEDATA OUTLETS PER PLAN PROVIDED BY THE TENANT.
- 5. PROVIDE RECEIVING LIGHTING AS SHOWN
- 6. ADDITIONAL ELECTRICAL WORK LIMITED ABOVE SHALL BE A SEPARATE LINE ITEM FROM THE ELECTRICAL BASE BID.



NOV 25 2012

DEPT. OF BUILDING  
 CITY OF PORTLAND



**LEGEND:**  
 ———— EXISTING WALL TO REPAIR  
 - - - - - WALL OR PICTURE TO BE REMOVED

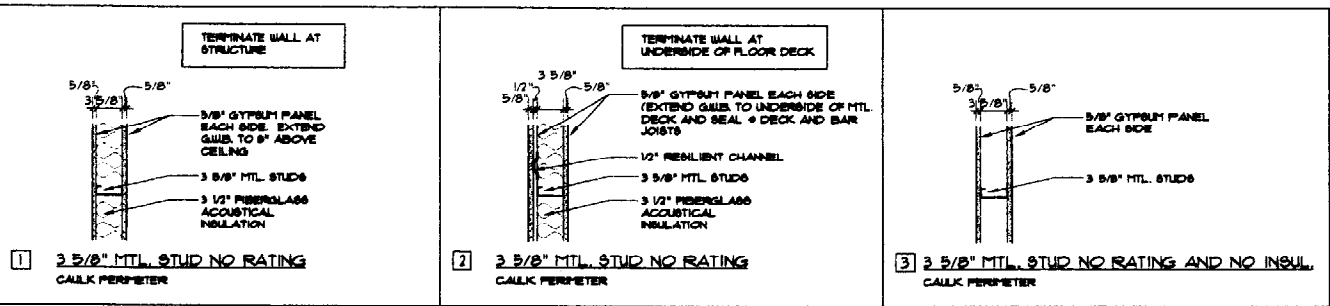
1 DEMO PLAN  
 SCALE: 1/8" = 1'-0"

DOOR SCHEDULE									
DOOR SCHEDULE ABBREVIATIONS									
EXT	EXTERIOR	MAS	MASONRY	FR	PAIR	SV	SHEET VINYL	P	PAINT
FR	FIRE RATED	MC	MINERAL CORE	SC	SOLID CORE	VCB	VINYL COVE BASE	P.C.	FLASH COVE: SHEET VINYL FLOORING
DR	DOOR	MN	MINUTE	S.LTS	SIDELITES	T.C.	TILE COVE	CPT	CARPET
HC	HOLLOW CORE	M.D	MOLDED CORE	TEMP	TEMPERED				
H1	HOLLOW METAL	HTL	METAL	TRK	TRUCK				
IS	INSULATED	NIC	NOT IN CONTRACT	WD	WOOD				
LL	LEAD LINED	NO	NUMBER	WLS	WIRE GLASS				

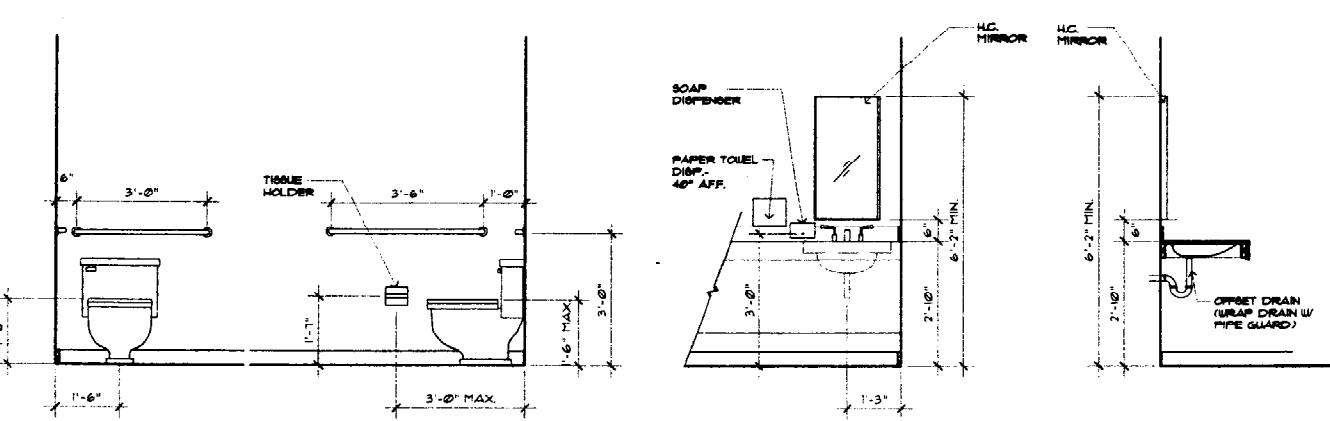
  

DOORS			FRAMES			THRESHOLD		REMARKS		
NO.	TYPE	SIZE	THK.	FR.	MAT.	TYPE	MAT.	FR.	MAT.	
1ST FLOOR										
101	EXIST. TO REMAIN									
102	EXIST. TO REMAIN									
103	EXIST. TO REMAIN									
104	EXIST. TO REMAIN									
105	EXIST. TO REMAIN									
106	EXIST. TO REMAIN									
107	EXIST. TO REMAIN									
108	EXIST. TO REMAIN									
109	EXIST. TO REMAIN									
110	EXIST. TO REMAIN									
111	RELOCATED DOOR								FROM OPENING 11 DEMO PLAN	
112	RELOCATED DOOR								FROM OPENING 12 DEMO PLAN, LOCK & FUNCTION	
113	EXIST. TO REMAIN									
114	EXIST. TO REMAIN									
115	RELOCATED DOOR								FROM OPENING 15 DEMO PLAN	
116	RELOCATED DOOR								FROM OPENING 16 DEMO PLAN	
117	RELOCATED DOOR								FROM OPENING 17 DEMO PLAN, LOCK & FUNCTION	
118	EXIST. TO REMAIN									
119	EXIST. TO REMAIN									
120	EXIST. TO REMAIN									
121	EXIST. TO REMAIN									
122	EXIST. TO REMAIN									
123	EXIST. TO REMAIN									
124	EXIST. TO REMAIN									
125	EXIST. TO REMAIN									
126	EXIST. TO REMAIN									
127	EXIST. TO REMAIN									
127.1	A	3'-0" X 1'-0"	1 3/4"		WD					PUSH/PULL, CLOSER, WATER STOP THRESHOLD
128	A	3'-0" X 1'-0"	1 3/4"		WD					
129	A	3'-0" X 1'-0"	1 3/4"		WD					PUSH/PULL - MATCH PUSH/PULL FROM DOOR #31
130	EXIST. TO REMAIN									
131	RELOCATED DOOR									PUSH/PULL FROM DOOR #31 DEMO PLAN
132	A	3'-0" X 1'-0"	1 3/4"		WD					
133	A	3'-0" X 1'-0"	1 3/4"		WD					

- NOTE:
- ALL DOOR HARDWARE SHALL BE SATIN BRASS LEVER HANDLE.
  - ALL EXISTING KNOB HARDWARE SHALL BE REPLACED W/ LEVER HANDLES.
  - VERIFY SECURITY DOOR CONTACTS AT EXISTING EXTERIOR DOORS.
  - EXISTING 4 NEW DOORS TO BE RE-KEYED TO REQUIREMENTS OF TENANT



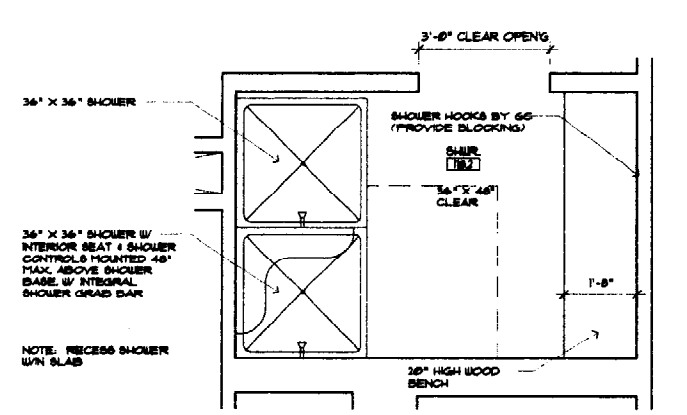
WALL DETAILS  
SCALE: 1" = 1'-0"



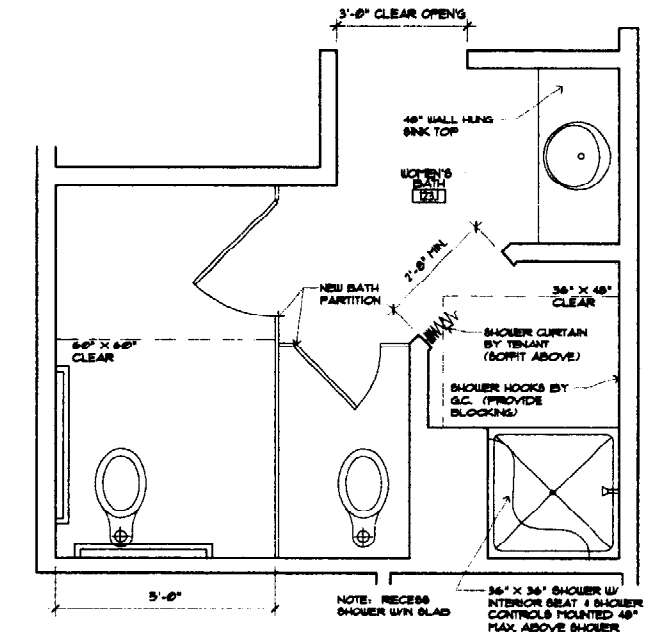
FINISH SCHEDULE									
ABBREVIATIONS									
SV	SHEET VINYL	P	PAINT	VCB	VINYL COVE BASE	P.C.	FLASH COVE: SHEET VINYL FLOORING	T.C.	TILE COVE
CPT	CARPET								

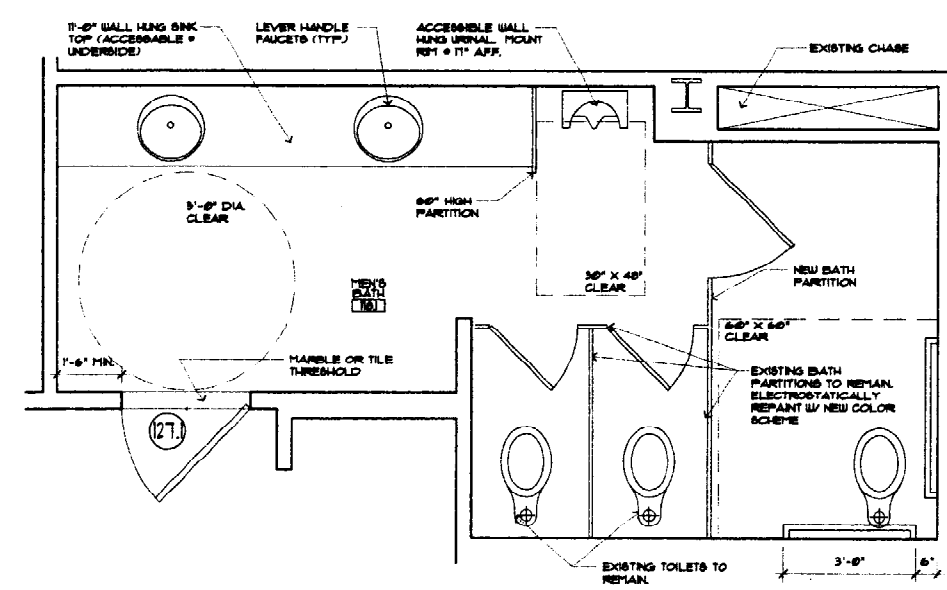
NO.	NAME	WALLS				FLOOR				CEILING		REMARKS
		N	E	S	W	MATL	BASE	MATL	BASE	TYPE	HT.	
101	LOBBY	P	P	P	P	CPT	VCB			EXIST.		
102	CONF. OF CENTER	P	P	P	P	CPT	VCB			EXIST.		
103	14A OFFICE	P	P	P	P	CPT	VCB			EXIST.		
104	FILES	P	P	P	P	CPT	VCB			S.A.T.		
105	PERSONNEL ADMIN.	P	P	P	P	CPT	VCB			EXIST.		
106	CO OFFICE	P	P	P	P	CPT	VCB			EXIST.		
107	WAITING	P	P	P	P	CPT	VCB			S.A.T.		
108	PREVENTION OFFICE	P	P	P	P	CPT	VCB			EXIST.		
109	PREVENTION OFFICE	P	P	P	P	CPT	VCB			EXIST.		
110	FIRE	EXIST.										
111	JAN.	EXIST.										
111	HALL	P	P	P	P	CPT	VCB			S.A.T.		
112	RECEPT.	P	P	P	P	CPT	VCB			S.A.T.		
113	MAIL	P	P	P	P	CPT	VCB			S.A.T.		
114	X/O OFFICE	P	P	P	P	CPT	VCB			EXIST.		
115	8M. CONF. RM.	P	P	P	P	CPT	VCB			EXIST.		
116	COPY	P	P	P	P	CPT	VCB			S.A.T.		
117	TELEPHONE	EXIST.										
118	MEN'S LOCKER	P	P	P	P	CPT	VCB			S.A.T.		
118.1	MEN'S BATH	TILE	TILE	TILE	TILE	TILE	TC			S.A.T.		TILE WALL 6'-0" AFF
118.2	MEN'S SHOWER	TILE	TILE	TILE	TILE	TILE	TC			S.A.T.		TILE WALL 6'-0" AFF
119	NETWORK	EXIST.										
120	COMPUTER	EXIST.										
121	PREVENTION OFFICE	P	P	P	P	CPT	VCB			EXIST.		
122	LOUNGE	P	P	P	P	CPT	VCB			EXIST.		
123	WOMEN'S LOCKER	P	P	P	P	CPT	VCB			S.A.T.		
123.1	WOMEN'S BATH	TILE	TILE	TILE	TILE	TILE	TC			S.A.T.		TILE WALL 6'-0" AFF
124	FLOAT/COAT STORE	P	P	P	P	CPT	VCB			S.A.T.		
125	LAUNDRY	P	P	P	P	CPT	VCB			S.A.T.		
126	CORRIDOR	P	P	P	P	CPT	VCB			S.A.T.		
126	PORT OF OFFICE	P	P	P	P	CPT	VCB			S.A.T.		
127	PORT OF OFFICE	P	P	P	P	CPT	VCB			S.A.T.		
128	STORAGE	P	P	P	P	CPT	VCB			S.A.T.		
129	HALL	P	P	P	P	CPT	VCB			S.A.T.		
130	STORAGE	P	P	P	P	CPT	VCB			S.A.T.		
131	FISHG VSL SAFETY	P	P	P	P	CPT	VCB			EXIST.		
132	H.C. BATHROOM	EXIST.										
133	SUPPLY	P	P	P	P	CPT	VCB			EXIST.		



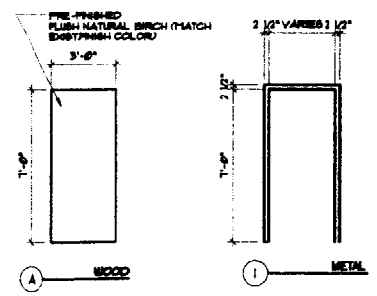
3 ENLARGED PLAN  
SCALE: 1/2" = 1'-0"



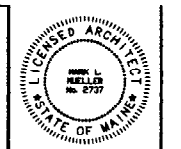
2 ENLARGED PLAN  
SCALE: 1/2" = 1'-0"



1 ENLARGED PLAN  
SCALE: 1/2" = 1'-0"



INTERIOR WINDOWS  
ALL EXISTING WINDOWS TO REMAIN OR BE RELOCATED (NO ADDITIONAL WINDOWS NEED TO BE ORDERED FOR THIS PROJECT). NEW WINDOW OPENINGS SHALL BE DETAILED SIMILAR TO THE EXISTING.



MARK MUELLER ARCHITECTS  
A.I.A.

100 Commercial Street  
Suite 207  
Portland, Maine 04101  
Phone/Fax 207.774.9057  
Email: rmm@mmarch.com

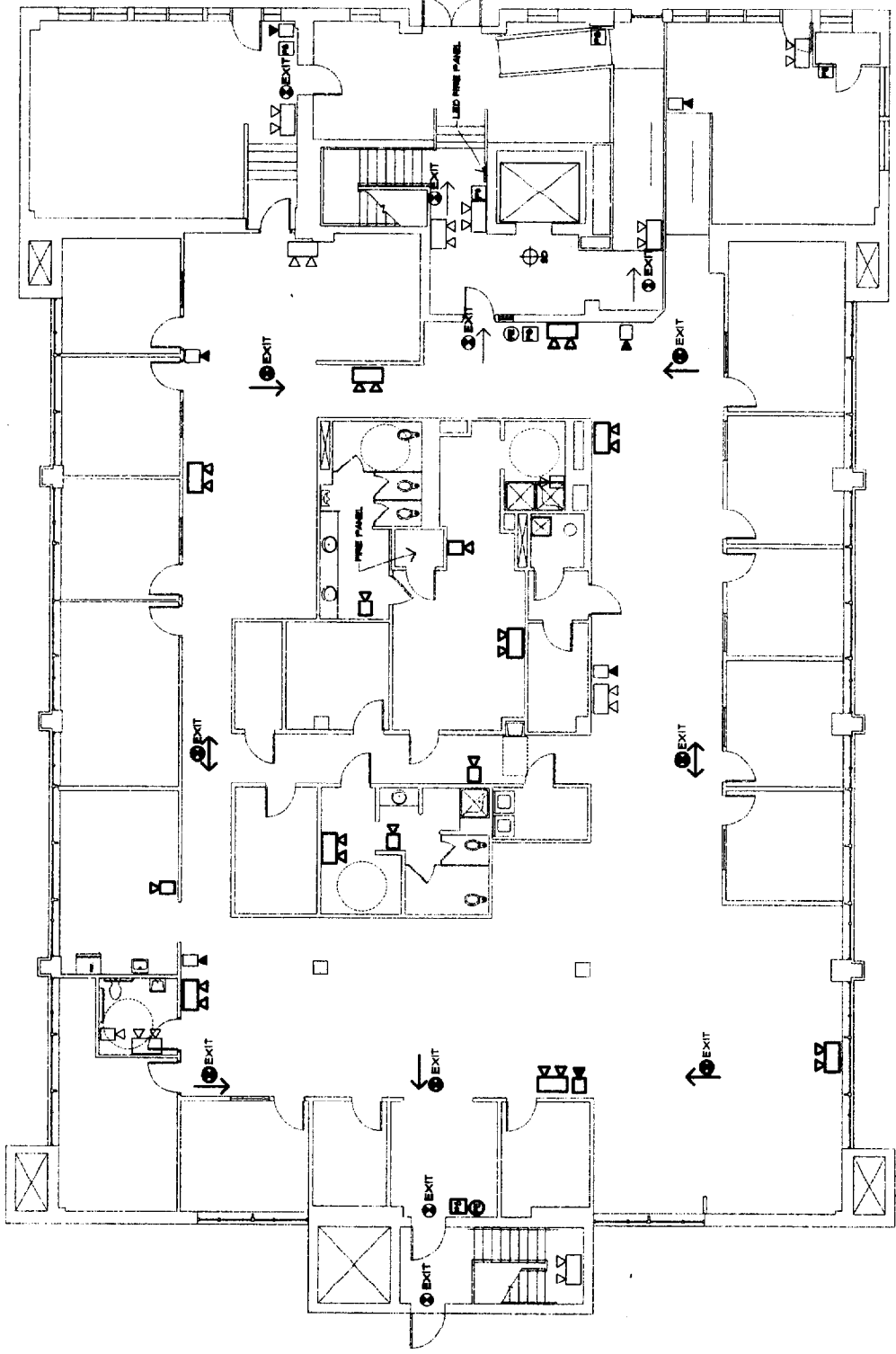
NOV 20 2002

RENOVATION OF:  
130 L.L.C.  
27 PEARL ST.  
PORTLAND, MAINE

WALL TYPES ACCESSIBLE BATH DETAILS  
NOV 20 2002  
PROJECT  
130 L.L.C.  
DRAWN BY  
BB  
CHECK BY  
MM

NOV 28 2002

LEGEND	
EXIST TO REMAIN	EXIST TO NEW



① LIFE SAFETY PLAN  
 SCALE: 1/8" = 1'-0"